

# [MS-BRWSA]: Common Internet File System (CIFS) Browser Auxiliary Protocol Specification

---

## Intellectual Property Rights Notice for Open Specifications Documentation

- **Technical Documentation.** Microsoft publishes Open Specifications documentation for protocols, file formats, languages, standards as well as overviews of the interaction among each of these technologies.
- **Copyrights.** This documentation is covered by Microsoft copyrights. Regardless of any other terms that are contained in the terms of use for the Microsoft website that hosts this documentation, you may make copies of it in order to develop implementations of the technologies described in the Open Specifications and may distribute portions of it in your implementations using these technologies or your documentation as necessary to properly document the implementation. You may also distribute in your implementation, with or without modification, any schema, IDL's, or code samples that are included in the documentation. This permission also applies to any documents that are referenced in the Open Specifications.
- **No Trade Secrets.** Microsoft does not claim any trade secret rights in this documentation.
- **Patents.** Microsoft has patents that may cover your implementations of the technologies described in the Open Specifications. Neither this notice nor Microsoft's delivery of the documentation grants any licenses under those or any other Microsoft patents. However, a given Open Specification may be covered by Microsoft's Open Specification Promise (available here: <http://www.microsoft.com/interop/osp>) or the Community Promise (available here: <http://www.microsoft.com/interop/cp/default.mspx>). If you would prefer a written license, or if the technologies described in the Open Specifications are not covered by the Open Specifications Promise or Community Promise, as applicable, patent licenses are available by contacting [iplq@microsoft.com](mailto:iplq@microsoft.com).
- **Trademarks.** The names of companies and products contained in this documentation may be covered by trademarks or similar intellectual property rights. This notice does not grant any licenses under those rights.
- **Fictitious Names.** The example companies, organizations, products, domain names, e-mail addresses, logos, people, places, and events depicted in this documentation are fictitious. No association with any real company, organization, product, domain name, email address, logo, person, place, or event is intended or should be inferred.

**Reservation of Rights.** All other rights are reserved, and this notice does not grant any rights other than specifically described above, whether by implication, estoppel, or otherwise.

**Tools.** The Open Specifications do not require the use of Microsoft programming tools or programming environments in order for you to develop an implementation. If you have access to Microsoft programming tools and environments you are free to take advantage of them. Certain Open Specifications are intended for use in conjunction with publicly available standard specifications and network programming art, and assumes that the reader either is familiar with the aforementioned material or has immediate access to it.

## Revision Summary

Date	Revision History	Revision Class	Comments
10/08/2010	1.0	New	Released new document.
11/19/2010	2.0	Major	Significantly changed the technical content.
01/07/2011	2.0	No change	No changes to the meaning, language, or formatting of the technical content.
02/11/2011	2.0	No change	No changes to the meaning, language, or formatting of the technical content.

# Contents

<b>1 Introduction</b>	<b>5</b>
1.1 Glossary	5
1.2 References	5
1.2.1 Normative References	5
1.2.2 Informative References	6
1.3 Overview	6
1.4 Relationship to Other Protocols	6
1.5 Prerequisites/Preconditions	7
1.6 Applicability Statement	7
1.7 Versioning and Capability Negotiation	8
1.8 Vendor-Extensible Fields	8
1.9 Standards Assignments	8
<b>2 Messages</b>	<b>9</b>
2.1 Transport	9
2.2 Common Data Types	9
2.2.1 Simple Data Types	9
2.2.1.1 BROWSER_IDENTIFY_HANDLE	9
2.2.2 Constants	9
2.2.2.1 Platform IDs	9
2.2.3 Structures	10
2.2.3.1 SERVER_INFO_100_CONTAINER	10
2.2.3.2 SERVER_ENUM_STRUCT	10
<b>3 Protocol Details</b>	<b>12</b>
3.1 Server Details	12
3.1.1 Abstract Data Model	12
3.1.1.1 OtherDomains Name Abstract Data Model	12
3.1.2 Timers	12
3.1.3 Initialization	12
3.1.4 Message Processing Events and Sequencing Rules	12
3.1.4.1 Browser	12
3.1.4.1.1 I_BrowserrQueryOtherDomains (Opnum 2)	13
3.1.5 Timer Events	14
3.1.6 Other Local Events	14
3.2 Client Details	14
3.2.1 Abstract Data Model	14
3.2.2 Timers	14
3.2.3 Initialization	15
3.2.4 Message Processing Events and Sequencing Rules	15
3.2.5 Timer Events	15
3.2.6 Other Local Events	15
<b>4 Protocol Examples</b>	<b>16</b>
<b>5 Security</b>	<b>17</b>
5.1 Security Considerations for Implementers	17
5.2 Index of Security Parameters	17
<b>6 Appendix A: Full IDL</b>	<b>18</b>

<b>7</b>	<b>Appendix B: Product Behavior .....</b>	<b>20</b>
<b>8</b>	<b>Change Tracking.....</b>	<b>21</b>
<b>9</b>	<b>Index .....</b>	<b>22</b>

# 1 Introduction

This document specifies the Common Internet File System (CIFS) Browser Auxiliary Protocol Specification. This protocol is used by the **master browser server** and **domain master browser server** as defined in [\[MS-BRWS\]](#). The master browser server uses this protocol to query configuration information for the **domains** from the domain master browser server. The protocol operation is stateless.

## 1.1 Glossary

The following terms are defined in [\[MS-GLOS\]](#):

**browser**  
**browser server**  
**client**  
**domain**  
**domain controller (DC)**  
**endpoint**  
**handle**  
**Interface Definition Language (IDL)**  
**Internet host name**  
**master browser server**  
**named pipe**  
**NetBIOS host name**  
**opnum**  
**primary domain controller (PDC)**  
**server**  
**Unicode**  
**universally unique identifier (UUID)**

The following terms are specific to this document:

**domain master browser server:** A **master browser server** that is responsible for combining information for an entire **domain** across all **subnets**. A **domain master browser server** is responsible for keeping multiple **subnets** in synchronization by periodically querying the **local master browser server** for information about user accounts, security, and available resources, such as printers.

**MAY, SHOULD, MUST, SHOULD NOT, MUST NOT:** These terms (in all caps) are used as described in [\[RFC2119\]](#). All statements of optional behavior use either MAY, SHOULD, or SHOULD NOT.

## 1.2 References

### 1.2.1 Normative References

We conduct frequent surveys of the normative references to assure their continued availability. If you have any issue with finding a normative reference, please contact [dochelp@microsoft.com](mailto:dochelp@microsoft.com). We will assist you in finding the relevant information. Please check the archive site, <http://msdn2.microsoft.com/en-us/library/E4BD6494-06AD-4aed-9823-445E921C9624>, as an additional source.

[C706] The Open Group, "DCE 1.1: Remote Procedure Call", C706, August 1997, <http://www.opengroup.org/public/pubs/catalog/c706.htm>

[MS-DTYP] Microsoft Corporation, "[Windows Data Types](#)", January 2007.

[MS-RPCE] Microsoft Corporation, "[Remote Procedure Call Protocol Extensions](#)", July 2006.

[MS-SMB] Microsoft Corporation, "[Server Message Block \(SMB\) Protocol Specification](#)", July 2006.

[RFC1001] Network Working Group, "Protocol Standard for a NetBIOS Service on a TCP/UDP Transport: Concepts and Methods", STD 19, RFC 1001, March 1987, <http://www.ietf.org/rfc/rfc1001.txt>

[RFC2119] Bradner, S., "Key words for use in RFCs to Indicate Requirement Levels", BCP 14, RFC 2119, March 1997, <http://www.ietf.org/rfc/rfc2119.txt>

## 1.2.2 Informative References

[MS-BRWS] Microsoft Corporation, "[Common Internet File System \(CIFS\) Browser Protocol Specification](#)", July 2006.

[MS-GLOS] Microsoft Corporation, "[Windows Protocols Master Glossary](#)", March 2007.

[MS-WKST] Microsoft Corporation, "[Workstation Service Remote Protocol Specification](#)", July 2006.

[PIPE] Microsoft Corporation, "Named Pipes", <http://msdn.microsoft.com/en-us/library/aa365590.aspx>

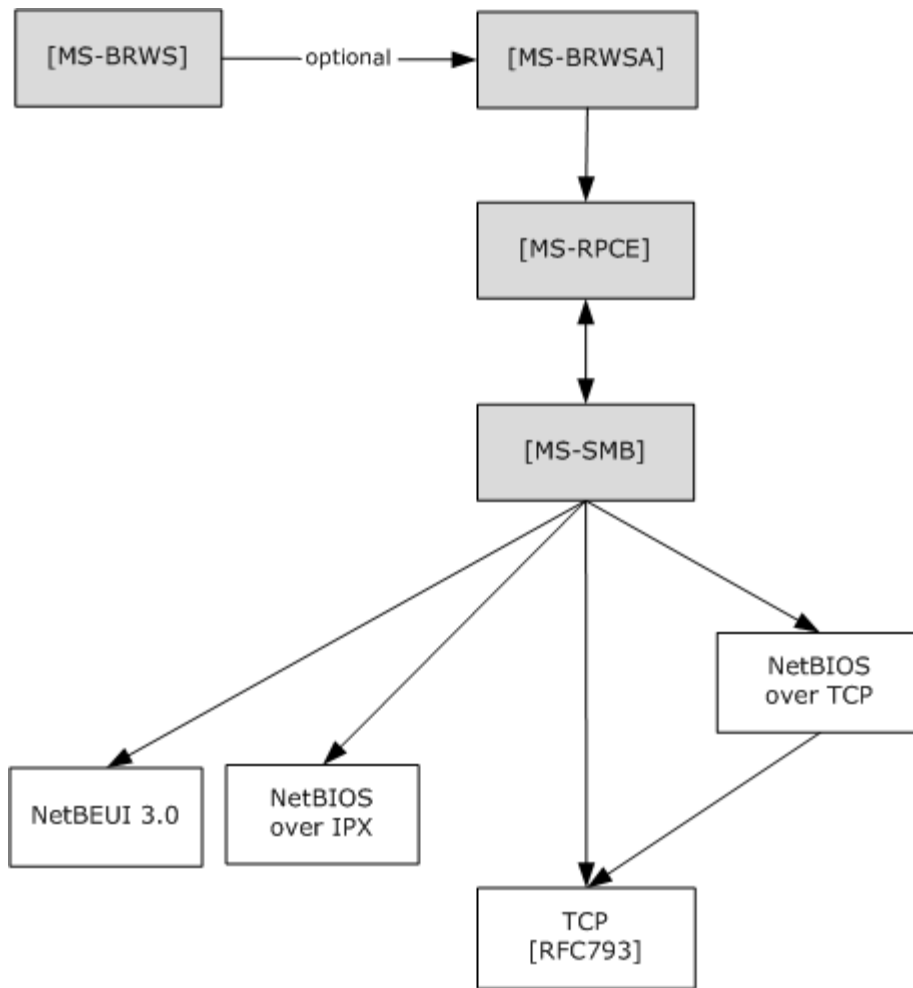
## 1.3 Overview

The main objective of the CIFS Browser Auxiliary Protocol is to provide a method for the master browser server of a subnet to query specific additional information from the domain master browser server for a given domain. Selection of the master browser server and domain master browser server and the roles that these **servers** play are as specified in [\[MS-BRWS\]](#).

## 1.4 Relationship to Other Protocols

This protocol depends on RPC, as specified in [\[MS-RPCE\]](#), for its transport. This protocol uses RPC over **named pipes**, as specified in [\[MS-RPCE\]](#) section 2.1.1.2. Named pipes use the Server Message Block (SMB) Protocol, as specified in [\[MS-SMB\]](#).

An implementation of [\[MS-BRWS\]](#) may use this protocol to retrieve information from the domain master browser.



**Figure 1: Relationship to other protocols**

- [MS-BRWS] calls (optional) [MS-BRWSA] to request OtherDomains information from a **domain controller (DC)**.
- [MS-BRWSA] calls [MS-RPCE] as RPC/named pipes as transport.
- [MS-RPCE] calls [MS-SMB] named pipes as a transport that uses SMB.

## 1.5 Prerequisites/Preconditions

The master browser server has previously identified the **endpoint** address of the domain master browser server.

## 1.6 Applicability Statement

This protocol is used to retrieve the list of domains that the domain master browser server has been configured to support.

## 1.7 Versioning and Capability Negotiation

None.

## 1.8 Vendor-Extensible Fields

None.

## 1.9 Standards Assignments

Parameter	Value	Reference
RPC Interface UUID	6BFFD098-A112-3610-9833-012892020162	See section <a href="#">2.1</a>
Pipe Name	"\pipe\browser"	See section <a href="#">2.1</a>



## 2 Messages

### 2.1 Transport

The RPC methods that the CIFS Browser Auxiliary Protocol uses are available on one endpoint:

- "\\pipe\browser" named pipe (RPC protseqs ncbn\_np), as specified in [\[MS-RPCE\]](#) section 2.1.1.2.

The CIFS Browser Auxiliary Protocol endpoint is available only over named pipes. For more information about named pipes, see [\[PIPE\]](#).

This protocol MUST use the **universally unique identifier (UUID)** as specified in section [1.9](#). The RPC version number is 0.0.

This protocol allows any user to establish a connection to the RPC server. The protocol uses the underlying RPC protocol to retrieve the identity of the caller that made the method call, as described in section [3.3.3.4.3](#) of [\[MS-RPCE\]](#). The server SHOULD use this identity to perform method specific access checks as described in section [3.1.4](#).

### 2.2 Common Data Types

In addition to RPC base types and definitions specified in [\[C706\]](#) and [\[MS-RPCE\]](#), additional data types are defined below.

The following are the types that are defined in this specification.

#### 2.2.1 Simple Data Types

##### 2.2.1.1 BROWSER\_IDENTIFY\_HANDLE

The **BROWSER\_IDENTIFY\_HANDLE** structure is a null-terminated **Unicode** string that identifies the remote computer on which to execute the method.

This type is declared as follows:

```
typedef [handle] LPWSTR BROWSER_IDENTIFY_HANDLE;
```

The **client** MUST set the impersonation level for the RPC connection that refers to this **handle** to "IDENTIFICATION". "IDENTIFICATION" implies an impersonation level of SECURITY\_IDENTIFICATION. For more information on impersonation levels, see the **ImpersonationLevel** field in [\[MS-SMB\]](#) section 2.2.4.9.1.

#### 2.2.2 Constants

##### 2.2.2.1 Platform IDs

The following values specify the information level to use for platform-specific information on the server.

Name	Value (decimal)
PLATFORM_ID_DOS	300
PLATFORM_ID_OS2	400
PLATFORM_ID_NT	500
PLATFORM_ID_OSF	600
PLATFORM_ID_VMS	700

## 2.2.3 Structures

### 2.2.3.1 SERVER\_INFO\_100\_CONTAINER

The **SERVER\_INFO\_100\_CONTAINER** structure contains a count of the entries returned by the method and a pointer to a buffer.

```
typedef struct _SERVER_INFO_100_CONTAINER {
    DWORD EntriesRead;
    [size_is(EntriesRead)] LPSEVER_INFO_100 Buffer;
} SERVER_INFO_100_CONTAINER,
*PSEVER_INFO_100_CONTAINER,
*LPSERVER_INFO_100_CONTAINER;
```

**EntriesRead:** The number of entries returned by the method call. This value **MUST** be zero if no domains are configured in the **primary domain controller** or domain controller. The client **SHOULD** set the EntriesRead field to 0, and the Buffer field to NULL, and the server **MUST** ignore these fields.

**Buffer:** A pointer to an array of SERVER\_INFO\_100 data structures (as specified in [\[MS-DTYP\] Appendix A](#)). If EntriesRead is zero, this field is undefined and **MUST NOT** be considered a valid pointer.

### 2.2.3.2 SERVER\_ENUM\_STRUCT

The **SERVER\_ENUM\_STRUCT** structure defines the layout for a structure with a value to indicate the information level submitted to the method and a pointer to a data structure that contains an array of data structures returned by the method. This structure is used by I\_BrowsersQueryOtherDomains.

```
typedef struct _SERVER_ENUM_STRUCT {
    DWORD Level;
    [switch_is(Level)] union {
        [case(100)]
            LPSEVER_INFO_100_CONTAINER Level100;
        [default]
            ;
    } ServerInfo;
} SERVER_ENUM_STRUCT,
*PSEVER_ENUM_STRUCT,
*LPSERVER_ENUM_STRUCT;
```

**Level:** The information level of the data. This member MUST be 100.

**ServerInfo:** A structure that contains an array of data structures. The **Level** member determines the data type of the members of this array.

**Level100:** A pointer to a [SERVER\\_INFO\\_100\\_CONTAINER](#) structure that contains the number of entries returned by the method and a pointer to an array of SERVER\_INFO\_100 structures (as specified in [\[MS-DTYP\] Appendix A](#)).

## 3 Protocol Details

### 3.1 Server Details

#### 3.1.1 Abstract Data Model

##### 3.1.1.1 OtherDomains Name Abstract Data Model

**OtherDomains:** Specifies a list of NetBIOS names of domains browsed by the computer. Each name MUST be at most 15 characters in length, and MUST NOT contain trailing spaces or a NetBIOS suffix as defined in [\[MS-BRWS\]](#) section 2.1.1. The names in the **OtherDomains** list MUST be separated by spaces.

This element is shared with the Workstation Service Remote Protocol Specification [\[MS-WKST\]](#), queried through the [WkstaQueryOtherDomains](#) event (section [3.2.6.1](#)).

The **OtherDomains** element is also shared with the Common Internet File System (CIFS) Browser Protocol [\[MS-BRWS\]](#) to update the **OtherDomains** information from a domain controller.

#### 3.1.2 Timers

None.

#### 3.1.3 Initialization

Section [2.1](#) specifies the parameters necessary to initialize the RPC protocol.

#### 3.1.4 Message Processing Events and Sequencing Rules

The *ServerName* parameter MUST be ignored by the server when processing any message. [<1>](#)

##### 3.1.4.1 Browser

The **browser** interface lists the methods associated with the **browser** service, which creates and maintains a view of resources available on a network. The server does not maintain client state information. The protocol operation is stateless. The version for this interface is 0.0.

The UUID for this interface is: "6BFFD098-A112-3610-9833-012892020162".

Methods in RPC Opnum Order

Method	Description
<b>Opnum0NotUsedOnWire</b>	Reserved for local use. Opnum: 0
<b>Opnum1NotUsedOnWire</b>	Reserved for local use. Opnum: 1
<a href="#">I BrowserQueryOtherDomains</a>	Returns a list of other domains configured for this computer. Opnum: 2
<b>Opnum3NotUsedOnWire</b>	Reserved for local use.

Method	Description
	Opnum: 3
<b>Opnum4NotUsedOnWire</b>	Reserved for local use. Opnum: 4
<b>Opnum5NotUsedOnWire</b>	Reserved for local use. Opnum: 5
<b>Opnum6NotUsedOnWire</b>	Reserved for local use. Opnum: 6
<b>Opnum7NotUsedOnWire</b>	Reserved for local use. Opnum: 7
<b>Opnum8NotUsedOnWire</b>	Reserved for local use. Opnum: 8
<b>Opnum9NotUsedOnWire</b>	Reserved for local use. Opnum: 9
<b>Opnum10NotUsedOnWire</b>	Reserved for local use. Opnum: 10
<b>Opnum11NotUsedOnWire</b>	Reserved for local use. Opnum: 11

In the preceding table, the phrase "Reserved for local use" means that the client MUST NOT send the **opnum** and that the server behavior is undefined [<2>](#) because it does not affect interoperability.

### 3.1.4.1.1 I\_BrowserrQueryOtherDomains (Opnum 2)

The **I\_BrowserrQueryOtherDomains** method is received by the server in an RPC\_REQUEST packet. The client SHOULD NOT send this RPC request to a server that is not a primary domain controller (PDC) acting as the **domain master browser server**.

If this server is not a primary domain controller it MAY fail the request. [<3>](#)

If the server is a primary domain controller, the server MUST update **OtherDomains** as specified in [\[MS-WKST\]](#) section 3.2.6.1, WkstaQueryOtherDomains Event. The server MUST construct a SERVER\_ENUM structure as specified in [2.2.3.2](#), containing a SERVER\_INFO\_100 structure as specified in [\[MS-DTYP\] Appendix A](#) for each name in **OtherDomains**, and return this to the caller.

```
NET_API_STATUS I_BrowserrQueryOtherDomains(
    [in, string, unique] BROWSER_IDENTIFY_HANDLE ServerName,
    [in, out] LPSERVER_ENUM_STRUCT InfoStruct,
    [out] LPDWORD TotalEntries
);
```

**ServerName:** An optional [BROWSER\\_IDENTIFY\\_HANDLE](#) structure that specifies the name of the server to execute the method. This value is ignored upon receipt.

**InfoStruct:** A pointer to a **SERVER\_ENUM\_STRUCTURE** structure that contains the *Level* parameter and a pointer to a **SERVER\_INFO\_x** structure, where <x> MUST be 100. The *Level* parameter MUST be set to 100. If *Level* is set to any other value, the method MUST return **ERROR\_INVALID\_LEVEL**.<4>

**TotalEntries:** The number of entries returned by the method call. This field MUST match the **EntriesRead** field of the **SERVER\_INFO\_100\_CONTAINER** structure.

**Return Values:** The method returns **NERR\_Success** on success; otherwise, it returns a nonzero error code, as specified in either [Win32 Error Codes](#). The most common error codes are listed in the following table.<5>

Return value/code	Description
0x00000000 NERR_Success	The operation completed successfully.
0x00000005 ERROR_ACCESS_DENIED	Access is denied.
0x00000008 ERROR_NOT_ENOUGH_MEMORY	This value MUST be returned when the server could not allocate enough memory to complete this operation.
0x00000057 ERROR_INVALID_PARAMETER	This value MUST be returned when a parameter is incorrect. For example, this value is returned when <i>InfoStruct</i> is NULL or the <b>Level100</b> member in the structure pointed to by <i>InfoStruct</i> is NULL.
0x0000007C ERROR_INVALID_LEVEL	This value MUST be returned when the <i>Level</i> parameter is not 100.
0x000000EA ERROR_MORE_DATA	The error <b>ERROR_MORE_DATA</b> indicates that not all available entries were returned. Some more entries exist which were not returned in the response.

### 3.1.5 Timer Events

None.

### 3.1.6 Other Local Events

None.

## 3.2 Client Details

### 3.2.1 Abstract Data Model

None.

### 3.2.2 Timers

None.

### **3.2.3 Initialization**

The client **MUST** create an RPC connection to the remote computer by using details as specified in section [2.1](#).

### **3.2.4 Message Processing Events and Sequencing Rules**

None.

### **3.2.5 Timer Events**

None.

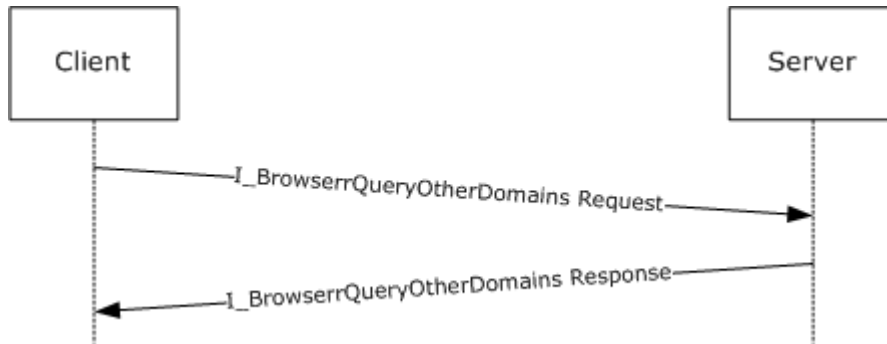
### **3.2.6 Other Local Events**

None.

## 4 Protocol Examples

The method provided by this protocol is a simple request-response. The server receives the request, executes the method, and returns a completion. The client simply returns the completion status to the calling application. This is a stateless protocol; each method call is independent of any previous method calls.

For example, the client calls the [I\\_BrowserrQueryOtherDomains](#) method; on receiving this method, the server executes the call locally and returns the appropriate information and NERR\_Success.



**Figure 2: Simple request-response model**



## 5 Security

### 5.1 Security Considerations for Implementers

As described in section [2.1](#), this protocol allows any user to connect to the server. Therefore, any security bug in the server implementation could be exploitable. The server implementation should enforce security on each method.

### 5.2 Index of Security Parameters

None.

## 6 Appendix A: Full IDL

For ease of implementation, the full **IDL** is provided below, where "ms-dtyp.idl" refers to the IDL found in [\[MS-DTYP\] Appendix A](#).

The syntax uses the IDL syntax extensions defined in [\[MS-RPCE\] sections 2.2.4 and 2.2.4](#). For example, as noted in [\[MS-RPCE\] section 2.2.4.9](#), a `pointer_default` declaration is not required and `pointer_default(unique)` is assumed.

```
[
    uuid(6BFFD098-A112-3610-9833-012892020162),
    version(0.0),
    ms_union,
    pointer_default(unique)
]
interface browser
{
    import "ms-dtyp.idl";

    typedef WCHAR* LPWSTR;

    typedef [handle] LPWSTR BROWSER_IDENTIFY_HANDLE;

    typedef struct _SERVER_INFO_100_CONTAINER {
        DWORD    EntriesRead;
        [size_is(EntriesRead)] LPSERVER_INFO_100 Buffer;
    } SERVER_INFO_100_CONTAINER,
    *PSERVER_INFO_100_CONTAINER,
    *LPSERVER_INFO_100_CONTAINER;

    typedef struct _SERVER_ENUM_STRUCT {
        DWORD    Level;
        [switch_is(Level)] union _SERVER_ENUM_UNION {
            [case(100)]
                LPSERVER_INFO_100_CONTAINER Level100;
            [default]
                ;
        } ServerInfo;
    } SERVER_ENUM_STRUCT,
    *PSERVER_ENUM_STRUCT,
    *LPSERVER_ENUM_STRUCT;

    NET_API_STATUS Opnum0NotUsedOnWire(void);

    NET_API_STATUS Opnum1NotUsedOnWire(void);

    NET_API_STATUS
    I_BrowseerrQueryOtherDomains(
        [in,string,unique] BROWSER_IDENTIFY_HANDLE ServerName,
        [in,out]          LPSERVER_ENUM_STRUCT    InfoStruct,
        [out]             LPDWORD                 TotalEntries
    );

    NET_API_STATUS Opnum3NotUsedOnWire(void);

    NET_API_STATUS Opnum4NotUsedOnWire(void);
}
```

```
NET_API_STATUS Opnum5NotUsedOnWire(void);  
NET_API_STATUS Opnum6NotUsedOnWire(void);  
NET_API_STATUS Opnum7NotUsedOnWire(void);  
NET_API_STATUS Opnum8NotUsedOnWire(void);  
NET_API_STATUS Opnum9NotUsedOnWire(void);  
NET_API_STATUS Opnum10NotUsedOnWire(void);  
NET_API_STATUS Opnum11NotUsedOnWire(void);  
}
```

## 7 Appendix B: Product Behavior

The information in this specification is applicable to the following Microsoft products or supplemental software. References to product versions include released service packs:

- Microsoft Windows® 2000 operating system
- Windows® XP operating system
- Windows Server® 2003 operating system
- Windows Vista® operating system
- Windows Server® 2008 operating system
- Windows® 7 operating system
- Windows Server® 2008 R2 operating system

Exceptions, if any, are noted below. If a service pack or Quick Fix Engineering (QFE) number appears with the product version, behavior changed in that service pack or QFE. The new behavior also applies to subsequent service packs of the product unless otherwise specified. If a product edition appears with the product version, behavior is different in that product edition.

Unless otherwise specified, any statement of optional behavior in this specification that is prescribed using the terms SHOULD or SHOULD NOT implies product behavior in accordance with the SHOULD or SHOULD NOT prescription. Unless otherwise specified, the term MAY implies that the product does not follow the prescription.

[<1> Section 3.1.4:](#) Windows implementation uses the RPC protocol to retrieve the identity of the caller as described in section [3.3.3.4.3](#) of [\[MS-RPCE\]](#). The server uses the underlying Windows security subsystem to determine the permissions for the caller. If the caller does not have the required permissions to execute a specific method, the method call fails with ERROR\_ACCESS\_DENIED (0x00000005).

[<2> Section 3.1.4.1:](#) Opnums reserved for local use apply to Windows as follows:

opnum	Description
0,5,6,10,11	Only used locally by Windows, never remotely.
1,3,4,9	Just returns ERROR_NOT_SUPPORTED. It is never used.
7,8	Just returns NERR_Success. It is never used.

[<3> Section 3.1.4.1.1:](#) Windows servers accept the I\_BrowserrQueryOtherDomains request and return the names of domains configured for browsing even if they are not the primary domain controller.

[<4> Section 3.1.4.1.1:](#) PLATFORM\_ID\_OS2 should be used for Windows NT Server, Windows 2000, Windows XP, Windows Server 2003, Windows Vista, Windows Server 2008, and Windows 7.

[<5> Section 3.1.4.1.1:](#) If the caller is not an authenticated user, then the method call fails with ERROR\_ACCESS\_DENIED (0x00000005).

## 8 Change Tracking

No table of changes is available. The document is either new or has had no changes since its last release.

## 9 Index

### A

Abstract data model  
[client](#) 14  
[server](#) 12  
[Applicability](#) 7

### C

[Capability negotiation](#) 8  
[Change tracking](#) 21  
Client  
[abstract data model](#) 14  
[initialization](#) 15  
[local events](#) 15  
[message processing](#) 15  
[sequencing rules](#) 15  
[timer events](#) 15  
[timers](#) 14  
[Common data types](#) 9

### D

Data model - abstract  
[client](#) 14  
[server](#) 12  
[Data types](#) 9

### E

[Examples - overview](#) 16

### F

[Fields - vendor-extensible](#) 8

### G

[Glossary](#) 5

### I

[I\\_BrowsersQueryOtherDomains method](#) 13  
[Implementer - security considerations](#) 17  
[Index of security parameters](#) 17  
[Informative references](#) 6  
Initialization  
[client](#) 15  
[server](#) 12  
[Introduction](#) 5

### L

Local events  
[client](#) 15  
[server](#) 14  
[LPSERVER\\_ENUM\\_STRUCT](#) 10  
[LPSERVER\\_INFO\\_100\\_CONTAINER](#) 10

### M

Message processing  
[client](#) 15  
[server](#) 12  
[Messages - transport](#) 9

### N

[Normative references](#) 5

### O

[Overview \(synopsis\)](#) 6

### P

[Parameters - security index](#) 17  
[Preconditions](#) 7  
[Prerequisites](#) 7  
[Product behavior](#) 20  
[PSERVER\\_ENUM\\_STRUCT](#) 10  
[PSERVER\\_INFO\\_100\\_CONTAINER](#) 10

### R

References  
[informative](#) 6  
[normative](#) 5  
[Relationship to other protocols](#) 6

### S

Security  
[implementer considerations](#) 17  
[parameter index](#) 17  
Sequencing rules  
[client](#) 15  
[server](#) 12  
Server  
[abstract data model](#) 12  
[initialization](#) 12  
[local events](#) 14  
[message processing](#) 12  
[sequencing rules](#) 12  
[timer events](#) 14  
[timers](#) 12  
[SERVER\\_ENUM\\_STRUCT structure](#) 10  
[SERVER\\_INFO\\_100\\_CONTAINER structure](#) 10  
[Standards assignments](#) 8

### T

Timer events  
[client](#) 15  
[server](#) 14  
Timers  
[client](#) 14

[server](#) 12  
[Tracking changes](#) 21  
[Transport](#) 9

## **V**

[Vendor-extensible fields](#) 8  
[Versioning](#) 8