

[MS-VIEWSS]: Views Web Service Protocol Specification

Intellectual Property Rights Notice for Open Specifications Documentation

- **Technical Documentation.** Microsoft publishes Open Specifications documentation for protocols, file formats, languages, standards as well as overviews of the interaction among each of these technologies.
- **Copyrights.** This documentation is covered by Microsoft copyrights. Regardless of any other terms that are contained in the terms of use for the Microsoft website that hosts this documentation, you may make copies of it in order to develop implementations of the technologies described in the Open Specifications and may distribute portions of it in your implementations using these technologies or your documentation as necessary to properly document the implementation. You may also distribute in your implementation, with or without modification, any schema, IDL's, or code samples that are included in the documentation. This permission also applies to any documents that are referenced in the Open Specifications.
- **No Trade Secrets.** Microsoft does not claim any trade secret rights in this documentation.
- **Patents.** Microsoft has patents that may cover your implementations of the technologies described in the Open Specifications. Neither this notice nor Microsoft's delivery of the documentation grants any licenses under those or any other Microsoft patents. However, a given Open Specification may be covered by Microsoft's Open Specification Promise (available here: <http://www.microsoft.com/interop/osp>) or the Community Promise (available here: <http://www.microsoft.com/interop/cp/default.msp>). If you would prefer a written license, or if the technologies described in the Open Specifications are not covered by the Open Specifications Promise or Community Promise, as applicable, patent licenses are available by contacting iplg@microsoft.com.
- **Trademarks.** The names of companies and products contained in this documentation may be covered by trademarks or similar intellectual property rights. This notice does not grant any licenses under those rights.
- **Fictitious Names.** The example companies, organizations, products, domain names, e-mail addresses, logos, people, places, and events depicted in this documentation are fictitious. No association with any real company, organization, product, domain name, email address, logo, person, place, or event is intended or should be inferred.

Reservation of Rights. All other rights are reserved, and this notice does not grant any rights other than specifically described above, whether by implication, estoppel, or otherwise.

Tools. The Open Specifications do not require the use of Microsoft programming tools or programming environments in order for you to develop an implementation. If you have access to Microsoft programming tools and environments you are free to take advantage of them. Certain Open Specifications are intended for use in conjunction with publicly available standard specifications and network programming art, and assumes that the reader either is familiar with the aforementioned material or has immediate access to it.

Revision Summary

Date	Revision History	Revision Class	Comments
04/04/2008	0.1		Initial Availability
06/27/2008	1.0	Major	Revised and edited the technical content
12/12/2008	1.01	Editorial	Revised and edited the technical content
07/13/2009	1.02	Major	Revised and edited the technical content
08/28/2009	1.03	Major	Updated and revised the technical content
11/06/2009	1.04	Editorial	Revised and edited the technical content
02/19/2010	2.0	Editorial	Revised and edited the technical content
03/31/2010	2.01	Editorial	Revised and edited the technical content
04/30/2010	2.02	Editorial	Revised and edited the technical content
06/07/2010	2.03	Editorial	Revised and edited the technical content
06/29/2010	2.04	Editorial	Changed language and formatting in the technical content.
07/23/2010	2.04	No change	No changes to the meaning, language, or formatting of the technical content.
09/27/2010	2.04	No change	No changes to the meaning, language, or formatting of the technical content.
11/15/2010	2.05	Major	Significantly changed the technical content.
12/17/2010	2.05	No change	No changes to the meaning, language, or formatting of the technical content.

Table of Contents

1 Introduction	6
1.1 Glossary	6
1.2 References	6
1.2.1 Normative References	6
1.2.2 Informative References	7
1.3 Protocol Overview (Synopsis)	7
1.4 Relationship to Other Protocols	8
1.5 Prerequisites/Preconditions	8
1.6 Applicability Statement	9
1.7 Versioning and Capability Negotiation	9
1.8 Vendor-Extensible Fields	9
1.9 Standards Assignments	9
2 Messages	10
2.1 Transport	10
2.2 Common Message Syntax	10
2.2.1 Namespaces	10
2.2.2 Messages	10
2.2.3 Elements	10
2.2.3.1 aggregations	11
2.2.3.2 formats	11
2.2.3.3 listName	12
2.2.3.4 query	12
2.2.3.5 rowLimit	12
2.2.3.6 viewFields	12
2.2.3.7 viewName	13
2.2.3.8 viewProperties	13
2.2.4 Complex Types	13
2.2.4.1 BriefViewDefinition	14
2.2.4.2 SOAPFaultDetails	15
2.2.4.3 UpdateViewPropertiesDefinition	15
2.2.5 Simple Types	15
2.2.5.1 LocalizableString	15
2.2.6 Attributes	16
2.2.7 Groups	16
2.2.8 Attribute Groups	16
2.2.8.1 ViewAttributeGroup	16
2.2.8.2 UpdateViewAttributeGroup	16
3 Protocol Details	17
3.1 ViewsSoap Server Details	17
3.1.1 Abstract Data Model	17
3.1.2 Timers	17
3.1.3 Initialization	17
3.1.4 Message Processing Events and Sequencing Rules	17
3.1.4.1 AddView	18
3.1.4.1.1 Messages	18
3.1.4.1.1.1 AddViewSoapIn	18
3.1.4.1.1.2 AddViewSoapOut	18
3.1.4.1.2 Elements	18

3.1.4.1.2.1	AddView	19
3.1.4.1.2.2	type.....	20
3.1.4.1.2.3	AddViewResponse.....	20
3.1.4.2	DeleteView	20
3.1.4.2.1	Messages	21
3.1.4.2.1.1	DeleteViewSoapIn	21
3.1.4.2.1.2	DeleteViewSoapOut	21
3.1.4.2.2	Elements.....	21
3.1.4.2.2.1	DeleteView	21
3.1.4.2.2.2	DeleteViewResponse	22
3.1.4.3	GetView	22
3.1.4.3.1	Messages	22
3.1.4.3.1.1	GetViewSoapIn	22
3.1.4.3.1.2	GetViewSoapOut	22
3.1.4.3.2	Elements.....	22
3.1.4.3.2.1	GetView	23
3.1.4.3.2.2	GetViewResponse	23
3.1.4.4	GetViewCollection	23
3.1.4.4.1	Messages	24
3.1.4.4.1.1	GetViewCollectionSoapIn	24
3.1.4.4.1.2	GetViewCollectionSoapOut.....	24
3.1.4.4.2	Elements.....	24
3.1.4.4.2.1	GetViewCollection.....	24
3.1.4.4.2.2	GetViewCollectionResponse	24
3.1.4.5	GetViewHtml.....	25
3.1.4.5.1	Messages	25
3.1.4.5.1.1	GetViewHtmlSoapIn.....	25
3.1.4.5.1.2	GetViewHtmlSoapOut.....	26
3.1.4.5.2	Elements.....	26
3.1.4.5.2.1	GetViewHtml.....	26
3.1.4.5.2.2	GetViewHtmlResponse	26
3.1.4.6	UpdateView	27
3.1.4.6.1	Messages	27
3.1.4.6.1.1	UpdateViewSoapIn	27
3.1.4.6.1.2	UpdateViewSoapOut	27
3.1.4.6.2	Elements.....	27
3.1.4.6.2.1	UpdateView	27
3.1.4.6.2.2	UpdateViewResponse	28
3.1.4.7	UpdateViewHtml.....	28
3.1.4.7.1	Messages	29
3.1.4.7.1.1	UpdateViewHtmlSoapIn.....	29
3.1.4.7.1.2	UpdateViewHtmlSoapOut.....	29
3.1.4.7.2	Elements.....	29
3.1.4.7.2.1	UpdateViewHtml.....	29
3.1.4.7.2.2	UpdateViewHtmlResponse	30
3.1.4.8	UpdateViewHtml2	30
3.1.4.8.1	Messages	30
3.1.4.8.1.1	UpdateViewHtml2SoapIn	31
3.1.4.8.1.2	UpdateViewHtml2SoapOut	31
3.1.4.8.2	Elements.....	31
3.1.4.8.2.1	UpdateViewHtml2	31
3.1.4.8.2.2	toolbar.....	32
3.1.4.8.2.3	viewHeader.....	32

3.1.4.8.2.4	viewBody.....	33
3.1.4.8.2.5	viewFooter.....	33
3.1.4.8.2.6	viewEmpty.....	34
3.1.4.8.2.7	rowLimitExceeded.....	34
3.1.4.8.2.8	UpdateViewHtml2Response.....	35
3.1.5	Timer Events	35
3.1.6	Other Local Events	35
4	Protocol Examples	36
5	Security.....	39
5.1	Security Considerations for Implementers.....	39
5.2	Index of Security Parameters	39
6	Appendix A: Full WSDL	40
7	Appendix B: Product Behavior	55
8	Change Tracking.....	56
9	Index	57

1 Introduction

This document specifies the Views Web Service Protocol. This protocol enables a protocol client to manage a **list view**.

1.1 Glossary

The following terms are defined in [\[MS-GLOS\]](#):

globally unique identifier (GUID)
Hypertext Transfer Protocol (HTTP)
Hypertext Transfer Protocol over Secure Sockets Layer (HTTPS)

The following terms are defined in [\[MS-OFCGLOS\]](#):

Collaborative Application Markup Language (CAML)
default list view
display name
field
HTML (HyperText Markup Language)
list
list item
list view
list view page
server-relative URL
SOAP (Simple Object Access Protocol)
SOAP action
SOAP body
SOAP fault
URL (Uniform Resource Locator)
WSDL (Web Services Description Language)
WSDL message
WSDL operation
XML fragment
XML namespace
XML Schema

The following terms are specific to this document:

MAY, SHOULD, MUST, SHOULD NOT, MUST NOT: These terms (in all caps) are used as described in [\[RFC2119\]](#). All statements of optional behavior use either MAY, SHOULD, or SHOULD NOT.

1.2 References

1.2.1 Normative References

We conduct frequent surveys of the normative references to assure their continued availability. If you have any issue with finding a normative reference, please contact dochelp@microsoft.com. We will assist you in finding the relevant information. Please check the archive site, <http://msdn2.microsoft.com/en-us/library/E4BD6494-06AD-4aed-9823-445E921C9624>, as an additional source.

[MS-WSSCAML] Microsoft Corporation, "[Collaborative Application Markup Language \(CAML\) Structure Specification](#)", June 2008.

[RFC2119] Bradner, S., "Key words for use in RFCs to Indicate Requirement Levels", BCP 14, RFC 2119, March 1997, <http://www.ietf.org/rfc/rfc2119.txt>

[RFC2616] Fielding, R., Gettys, J., Mogul, J., et al., "Hypertext Transfer Protocol -- HTTP/1.1", RFC 2616, June 1999, <http://www.ietf.org/rfc/rfc2616.txt>

[SOAP1.1] Box, D., Ehnebuske, D., Kakivaya, G., et al., "Simple Object Access Protocol (SOAP) 1.1", May 2000, <http://www.w3.org/TR/2000/NOTE-SOAP-20000508/>

[SOAP1.2/1] Gudgin, M., Hadley, M., Mendelsohn, N., Moreau, J., and Nielsen, H.F., "SOAP Version 1.2 Part 1: Messaging Framework", W3C Recommendation, June 2003, <http://www.w3.org/TR/2003/REC-soap12-part1-20030624>

[SOAP1.2/2] Gudgin, M., Hadley, M., Mendelsohn, N., Moreau, J., and Nielsen, H.F., "SOAP Version 1.2 Part 2: Adjuncts", W3C Recommendation, June 2003, <http://www.w3.org/TR/2003/REC-soap12-part2-20030624>

[WSDL] Christensen, E., Curbera, F., Meredith, G., and Weerawarana, S., "Web Services Description Language (WSDL) 1.1", W3C Note, March 2001, <http://www.w3.org/TR/2001/NOTE-wsdl-20010315>

[XMLNS] World Wide Web Consortium, "Namespaces in XML 1.0 (Third Edition)", W3C Recommendation 8 December 2009, <http://www.w3.org/TR/REC-xml-names/>

[XMLSCHEMA1] Thompson, H.S., Ed., Beech, D., Ed., Maloney, M., Ed., and Mendelsohn, N., Ed., "XML Schema Part 1: Structures", W3C Recommendation, May 2001, <http://www.w3.org/TR/2001/REC-xmlschema-1-20010502/>

[XMLSCHEMA2] Biron, P.V., Ed. and Malhotra, A., Ed., "XML Schema Part 2: Datatypes", W3C Recommendation, May 2001, <http://www.w3.org/TR/2001/REC-xmlschema-2-20010502/>

1.2.2 Informative References

[MS-GLOS] Microsoft Corporation, "[Windows Protocols Master Glossary](#)", March 2007.

[MS-LISTSWS] Microsoft Corporation, "[Lists Web Service Protocol Specification](#)", June 2008.

[MS-OFCGLOS] Microsoft Corporation, "[Microsoft Office Master Glossary](#)", June 2008.

[RFC2818] Rescorla, E., "HTTP Over TLS", RFC 2818, May 2000, <http://www.ietf.org/rfc/rfc2818.txt>

1.3 Protocol Overview (Synopsis)

The Views Web Service Protocol provides methods to create a list view, retrieve a specific list view or the collection of list views from a **list (1)**, update a list view, and delete a list view. For more information about list's, see [\[MS-LISTSWS\]](#). This protocol also provides methods to retrieve and update display properties of a list view by using **Collaborative Application Markup Language (CAML)** and **HTML**.

Each method in the protocol is a **WSDL operation** that accepts a set of parameters as a **SOAP** request and returns a set of values as a SOAP response.

The protocol client sends a request to the protocol server via a SOAP request message, and the protocol server sends return values to the protocol client via a SOAP response message, as shown in the following figure. All SOAP requests are made to one of several well-defined **URLs (Uniform Resource Locators)** on the protocol server, which protocol clients can discover. The protocol server never initiates any communication with the protocol client.

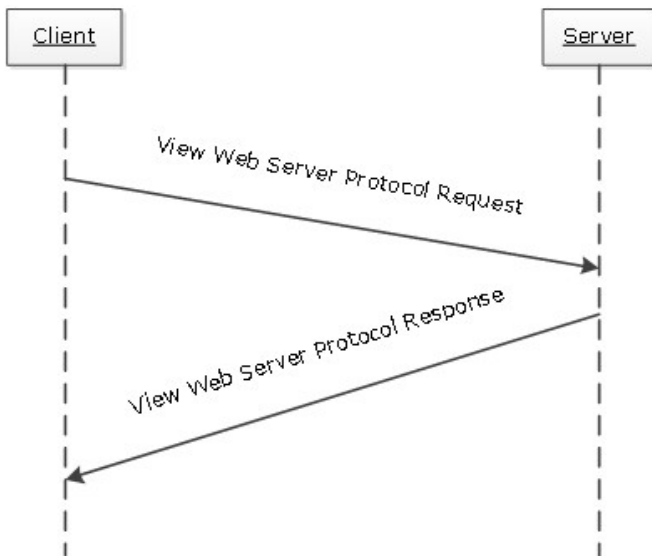


Figure 1: Views Web Service Protocol sequence diagram

1.4 Relationship to Other Protocols

The Views Web Service Protocol uses the SOAP messaging protocol for formatting requests and responses, as described either in [\[SOAP1.1\]](#) or in [\[SOAP1.2/1\]](#) and [\[SOAP1.2/2\]](#). It transmits these messages by using the **HTTP** protocol, as described in [\[RFC2616\]](#), or the **HTTPS** protocol, as described in [\[RFC2818\]](#).

The following diagram shows the underlying messaging and transport stack that the protocol uses:

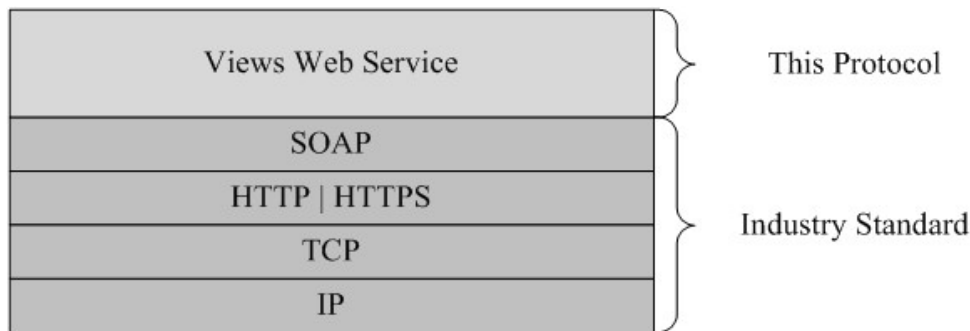


Figure 2: This protocol in relation to other protocols

1.5 Prerequisites/Preconditions

This protocol operates against a site that is identified by a URL that protocol clients recognize. The protocol server endpoint is formed by appending `"/_vti_bin/views.asmx"` to the URL of the site—for example, `http://www.contoso.com/Repository/_vti_bin/views.asmx`.

This protocol assumes that the underlying protocols have performed authentication.

1.6 Applicability Statement

The Views Web Service Protocol is applicable in the following scenarios:

- Creating and deleting a list view
- Retrieving the collection of list views of a list (1)
- Retrieving and updating the definition of a list view
- Retrieving and updating the display properties of a list view by using CAML and HTML

1.7 Versioning and Capability Negotiation

This document covers versioning issues in one area. This protocol uses multiple transports with SOAP, as described in section [2.1](#).

1.8 Vendor-Extensible Fields

None.

1.9 Standards Assignments

None.

2 Messages

2.1 Transport

Protocol servers MUST support SOAP over HTTP. Protocol servers can additionally support SOAP over HTTPS for enhancing the security of communication with protocol clients.

Protocol messages MUST be formatted as specified either in [\[SOAP1.1\]](#) section 4 (SOAP Envelope) or in [\[SOAP1.2/1\]](#) section 5 (SOAP Message Construct). Protocol server faults MUST be returned either via HTTP status codes, as specified in [\[RFC2616\]](#) section 10 (Status Code Definitions), or via **SOAP faults**, as specified either in [\[SOAP1.1\]](#) section 4.4 (SOAP Fault) or in [\[SOAP1.2/1\]](#) section 5.4 (SOAP Fault).

2.2 Common Message Syntax

This section contains common structures that this protocol uses. The syntax of the structures uses **XML Schema (1)**, as specified in [\[XMLSCHEMA1\]](#) and [\[XMLSCHEMA2\]](#), and **WSDL (Web Services Description Language)**, as specified in [\[WSDL\]](#).

2.2.1 Namespaces

This specification defines and references various **XML namespaces** by using the mechanisms specified in [\[XMLNS\]](#). Although this specification associates an XML namespace prefix for each XML namespace that is used, as shown in the following table, the choice of any particular XML namespace prefix is implementation-specific and not significant for interoperability.

Prefix	Namespace URI	Reference
core	http://schema.microsoft.com/sharepoint/wire/	[MS-WSSCAML]
s	http://www.w3.org/2001/XMLSchema	[XMLSCHEMA1]
soap	http://schemas.xmlsoap.org/wsdl/soap/	[SOAP1.1]
soap12	http://schemas.xmlsoap.org/wsdl/soap12/	[SOAP1.2/1] [SOAP1.2/2]
tns	http://schemas.microsoft.com/sharepoint/soap/	this document
wsdl	http://schemas.xmlsoap.org/wsdl/	[WSDL]
(none)	http://schemas.microsoft.com/sharepoint/soap/	this document

2.2.2 Messages

None.

2.2.3 Elements

The following table summarizes the set of common XML Schema (1) element definitions defined in this specification. XML Schema (1) element definitions that are specific to a particular operation are described with the operation.

Element	Description
aggregations	Specifies the fields (2) by which the list view is aggregated.
formats	Specifies the row and column formatting of a list view.
listName	The globally unique identifier (GUID) of a list (1).
query	Specifies the query that a list view uses.
rowLimit	Specifies whether a list (1) supports displaying items page by page, and the number of items that a list view displays per page.
viewFields	Specifies the fields (2) included in a list view.
viewName	Specifies the GUID of a list view.
viewProperties	Specifies the attributes of a list view.

2.2.3.1 aggregations

The **aggregations** element specifies the fields (2) used to aggregate a list view. The definition of the **aggregations** element is as follows.

```
<s:element name="aggregations">
  <s:complexType>
    <s:sequence>
      <s:element name="Aggregations" type="core:AggregationsDefinition" minOccurs="0"
maxOccurs="1"/>
    </s:sequence>
  </s:complexType>
</s:element>
```

Aggregations: An **XML fragment** that conforms to the schema of the **AggregationsDefinition** complex type, as specified in [\[MS-WSSCAML\]](#) section 2.3.2.1 (AggregationsDefinition Type).

2.2.3.2 formats

The **formats** element specifies the row and column formatting of a list view. The definition of the **formats** element is as follows.

```
<s:element name="formats">
  <s:complexType>
    <s:sequence>
      <s:element name="Formats" type="core:ViewFormatDefinitions" minOccurs="0"
maxOccurs="1"/>
    </s:sequence>
  </s:complexType>
</s:element>
```

Formats: An XML fragment that conforms to the schema of the **ViewFormatDefinitions** complex type, as specified in [\[MS-WSSCAML\]](#) section 2.3.2.21 (ViewFormatDefinitions Type).

2.2.3.3 listName

The **listName** element specifies a list (1) on the protocol server. It MUST be the **display name** or the GUID of a list (1). The definition of the **listName** element is as follows.

```
<s:element name="listName" type="s:string" />
```

If the value of **listName** element is not the name or GUID of a list (1), the operation MUST return a SOAP fault message.

2.2.3.4 query

The **query** element includes the information that affects how a list view displays the data. The definition of the **query** element is as follows.

```
<s:element name="query">
  <s:complexType>
    <s:sequence>
      <s:element name="Query" type="core:CamlQueryRoot" minOccurs="0" maxOccurs="1"/>
    </s:sequence>
  </s:complexType>
</s:element>
```

Query: An XML fragment that conforms to the schema of the **CamlQueryRoot** complex type, as specified in [\[MS-WSSCAML\]](#) section 2.2.2.1 (CamlQueryRoot Type).

2.2.3.5 rowLimit

The **rowLimit** element specifies whether a list (1) supports displaying **list items** page by page, and the number of list items that a list view displays per page. The definition of the **rowLimit** element is as follows.

```
<s:element name="rowLimit">
  <s:complexType>
    <s:sequence>
      <s:element name="RowLimit" type="core:RowLimitDefinition" minOccurs="0" maxOccurs="1"/>
    </s:sequence>
  </s:complexType>
</s:element>
```

RowLimit: An XML fragment that conforms to the schema of the **RowLimitDefinition** complex type, as specified in [\[MS-WSSCAML\]](#) section 2.3.2.14 (RowLimitDefinition Type).

2.2.3.6 viewFields

The **viewFields** element specifies the fields (2) included in a list view. The definition of the **viewFields** element is as follows.

```
<s:element name="viewFields">
  <s:complexType>
    <s:sequence>
      <s:element name="ViewFields" minOccurs="0" maxOccurs="1">
        <s:complexType>
```

```

        <s:sequence>
            <s:element name="FieldRef" type="core:FieldRefDefinitionView" minOccurs="0"
maxOccurs="unbounded" />
        </s:sequence>
    </s:complexType>
</s:element>
</s:sequence>
</s:complexType>
</s:element>

```

ViewFields: An XML fragment that contains an XML element of **FieldRef**, which conforms to the schema of the **FieldRefDefinitionView** complex type, as specified in [\[MS-WSSCAML\]](#) section 2.3.2.19 (FieldRefDefinitionView Type).

2.2.3.7 viewName

The **viewName** element specifies a list view on the protocol server. It MUST be the GUID of a list view. The definition of the **viewName** element is as follows.

```
<s:element name="viewName" type="s:string"/>
```

If the value of **viewName** element is not the GUID of a list (1), the operation MUST return a SOAP fault message.

When **viewName** element is not present in the message or the value of **viewName** element is empty, the protocol server MUST refer to the **default list view** of the list (1). If the default list view does not exist, the protocol server MUST return a SOAP fault message.

2.2.3.8 viewProperties

The **viewProperties** element specifies the properties of a list view. The definition of the **viewProperties** element is as follows.

```

<s:element name="viewProperties">
    <s:complexType>
        <s:sequence>
            <s:element name="View" type="tns:UpdateViewPropertiesDefinition" minOccurs="0"
maxOccurs="1"/>
        </s:sequence>
    </s:complexType>
</s:element>

```

View: An XML fragment that conforms to the schema of the **UpdateViewPropertiesDefinition** complex type, as specified in section [2.2.4.3](#).

2.2.4 Complex Types

The following table summarizes the set of common XML Schema (1) complex type definitions defined in this specification. XML Schema (1) complex type definitions that are specific to a particular operation are described with the operation.

Complex type	Description
BriefViewDefinition	Specifies details about a list view.
SOAPFaultDetails	Specifies the details of a SOAP fault.
UpdateViewPropertiesDefinition	Specifies the attributes of a list view that are used in update methods.

2.2.4.1 BriefViewDefinition

The **BriefViewDefinition** complex type specifies summary information about a list view. The definition of the **BriefViewDefinition** element is as follows.

```

<s:complexType name="BriefViewDefinition">
  <s:sequence>
    <s:element name="Query" type="core:CamlQueryRoot" minOccurs="1" maxOccurs="1" />
    <s:element name="ViewFields" minOccurs="1" maxOccurs="1">
      <s:complexType>
        <s:sequence>
          <s:element name="FieldRef" type="core:FieldRefDefinitionView" minOccurs="0"
maxOccurs="unbounded" />
        </s:sequence>
      </s:complexType>
    </s:element>
    <s:element name="ViewData" minOccurs="0" maxOccurs="1">
      <s:complexType>
        <s:sequence>
          <s:element name="FieldRef" type="core:FieldRefDefinitionViewData" minOccurs="3"
maxOccurs="5" />
        </s:sequence>
      </s:complexType>
    </s:element>
    <s:element name="CalendarViewStyles" type="core:CalendarViewStylesDefinition"
minOccurs="0" maxOccurs="1" />
    <s:element name="RowLimit" type="core:RowLimitDefinition" minOccurs="0" maxOccurs="1" />
    <s:element name="Formats" type="core:ViewFormatDefinitions" minOccurs="0" maxOccurs="1"
/>
    <s:element name="Aggregations" type="core:AggregationsDefinition" minOccurs="0"
maxOccurs="1" form="unqualified" />
    <s:element name="ViewStyle" type="core:ViewStyleReference" minOccurs="0" maxOccurs="1" />
    <s:element name="OpenApplicationExtension" type="s:string" minOccurs="0" maxOccurs="1"
/>
  </s:sequence>
  <s:attributeGroup ref="tns:ViewAttributeGroup"/>
</s:complexType>

```

Query: For a definition, see [\[MS-WSSCAML\]](#) section 2.3.2.17.

ViewFields: For a definition, see [\[MS-WSSCAML\]](#) section 2.3.2.17.

ViewData: For a definition, see [\[MS-WSSCAML\]](#) section 2.3.2.17.

CalendarViewStyles: For a definition, see [\[MS-WSSCAML\]](#) section 2.3.2.17.

RowLimit: For a definition, see [\[MS-WSSCAML\]](#) section 2.3.2.17.

Formats: For a definition, see [\[MS-WSSCAML\]](#) section 2.3.2.17.

Aggregations: For a definition, see [\[MS-WSSCAML\]](#) section 2.3.2.17.

ViewStyle: For a definition, see [\[MS-WSSCAML\]](#) section 2.3.2.17.

OpenApplicationExtension: For a definition, see [\[MS-WSSCAML\]](#) section 2.3.2.17.

The attributes are specified in the attribute group **ViewAttributeGroup**; refer to section [2.2.8.1](#) for its definition.

2.2.4.2 SOAPFaultDetails

The **SOAPFaultDetails** complex type specifies the details of a SOAP fault. The definition of the **SOAPFaultDetails** element is as follows.

```
<s:schema xmlns:s="http://www.w3.org/2001/XMLSchema" targetNamespace="
http://schemas.microsoft.com/sharepoint/soap">
  <s:complexType name="SOAPFaultDetails">
    <s:sequence>
      <s:element name="errorstring" type="s:string"/>
      <s:element name="errorcode" type="s:string" minOccurs="0"/>
    </s:sequence>
  </s:complexType>
</s:schema>
```

errorstring: Human-readable text that explains the application-level fault.

errorcode: The hexadecimal representation of a 4-byte result code.

2.2.4.3 UpdateViewPropertiesDefinition

The **UpdateViewPropertiesDefinition** complex type specifies the attributes of the **View** element that are used for update methods. The definition of the **UpdateViewPropertiesDefinition** element is as follows.

```
<s:complexType name="UpdateViewPropertiesDefinition">
  <s:attributeGroup ref="tns:UpdateViewAttributeGroup"/>
</s:complexType>
```

The attribute group **UpdateViewAttributeGroup** is specified in section [2.2.8.2](#).

2.2.5 Simple Types

The following describes the XML Schema (1) simple type definitions defined in this specification. XML Schema (1) simple type definitions that are specific to a particular operation are described with the operation.

2.2.5.1 LocalizableString

The **LocalizableString** element is as follows:

```
<s:simpleType name="LocalizableString">
  <s:restriction base="s:string" />
</s:simpleType>
```

2.2.6 Attributes

This specification does not define any common XML Schema (1) attribute definitions.

2.2.7 Groups

This specification does not define any common XML Schema (1) group definitions.

2.2.8 Attribute Groups

The following table summarizes the set of common XML Schema (1) attribute group definitions defined by this specification. XML Schema (1) attribute groups that are specific to a particular operation are described with the operation.

Attribute	Description
UpdateViewAttributeGroup	Contains the XML Schema (1) attributes used in methods of updating a list view.
ViewAttributeGroup	Contains XML Schema (1) attributes that specify a list view.

2.2.8.1 ViewAttributeGroup

The **ViewAttributeGroup** attribute group contains attributes that specify a list view. All attributes specified by **ViewAttributeGroup** are the same as those specified by the ViewDefinition complex type as specified in [\[MS-WSSCAML\]](#) section 2.3.2.17.

2.2.8.2 UpdateViewAttributeGroup

The **UpdateViewAttributeGroup** attribute group contains attributes that specify a list view. This group of attributes is used in update methods as the input parameter. The definition of the **UpdateViewAttributeGroup** element is as follows.

```
<s:attributeGroup name="UpdateViewAttributeGroup">
  <s:attribute name="DefaultView" type="core:TRUEFALSE" default="FALSE" />
  <s:attribute name="DisplayName" type="s:string" />
  <s:attribute name="FPModified" type="core:TRUEFALSE" default="FALSE" />
  <s:attribute name="Scope" type="core:ViewScope" default="" />
</s:attributeGroup>
```

All attributes are specified in [\[MS-WSSCAML\]](#) section 2.3.2.17 (ViewDefinition).

3 Protocol Details

The client side of this protocol is simply a pass-through. That is, no additional timers or other state is required on the client side of this protocol. Calls that the higher-layer protocol or application makes are passed directly to the transport, and the results that the transport returns are passed directly back to the higher-layer protocol or application.

Except where specified, protocol clients interpret HTTP status codes returned by the protocol server as specified in [\[RFC2616\]](#) section 10.

This protocol allows protocol servers to provide additional details for SOAP faults by including either a **detail** element as specified in [\[SOAP1.1\]](#) section 4.4 or a **detail** element as specified in [\[SOAP1.2/1\]](#) section 5.4.5, which conforms to the XML Schema (2) of the **SOAPFaultDetails** complex type specified in section [2.2.4.2](#). Except where specified, these SOAP faults are not significant for interoperability, and protocol clients can interpret them in an implementation-specific manner.

This protocol allows protocol servers to perform implementation-specific authorization checks and notify protocol clients of authorization faults either by using HTTP status codes or by using SOAP faults, as specified previously in this section.

3.1 ViewsSoap Server Details

3.1.1 Abstract Data Model

This section describes a conceptual model of possible data organization that an implementation maintains to participate in this protocol. This document does not mandate that implementations adhere to this model as long as their external behavior is consistent with that described in this document.

This protocol enables a protocol client to create a list view, retrieve a specific list view or the collection of list views from a list (1), update a list view, and delete a list view.

3.1.2 Timers

None.

3.1.3 Initialization

None.

3.1.4 Message Processing Events and Sequencing Rules

The following table summarizes the WSDL operations specified in this specification.

Operation	Description
AddView	Adds a list view for the specified list (1).
DeleteView	Deletes a list view.
GetView	Retrieves information about a list view, without the display properties.
GetViewCollection	Retrieves a collection of list views for a specified list (1).

Operation	Description
GetViewHtml	Retrieves information about a list view, including the display properties in CAML and HTML.
UpdateView	Updates a list view, without the display properties.
UpdateViewHtml	Updates a list view, including the display properties in CAML and HTML. This method operates the same as UpdateViewHtml2 with one less parameter.
UpdateViewHtml2	Updates a list view, including the display properties in CAML and HTML.

3.1.4.1 AddView

The **AddView** operation is used to create a list view for the specified list (1). The definition of the **AddView** operation is as follows.

```
<wsdl:operation name="AddView">
  <wsdl:input message="tns:AddViewSoapIn" />
  <wsdl:output message="tns:AddViewSoapOut" />
</wsdl:operation>
```

The protocol client sends an **AddViewSoapIn** request message, and the protocol server responds with an **AddViewSoapOut** response message.

3.1.4.1.1 Messages

The following WSDL message definitions are specific to this operation.

3.1.4.1.1.1 AddViewSoapIn

The request **WSDL message** for an **AddView** WSDL operation.

The **SOAP action** value of the message is specified as follows.

```
http://schemas.microsoft.com/sharepoint/soap/AddView
```

The **SOAP body** contains an **AddView** element.

3.1.4.1.1.2 AddViewSoapOut

The response WSDL message for an **AddView** WSDL operation.

The SOAP action value of the message is specified as follows.

```
http://schemas.microsoft.com/sharepoint/soap/AddView
```

The SOAP body contains an **AddViewResponse** element.

3.1.4.1.2 Elements

The following XML Schema (1) element definitions are specific to this operation.

3.1.4.1.2.1 AddView

The **AddView** element defines the input parameters for the **AddView** operation. The definition of the **AddView** element is as follows.

```
<s:element name="AddView">
  <s:complexType>
    <s:sequence>
      <s:element name="listName" type="s:string" minOccurs="1" maxOccurs="1"/>
      <s:element name="viewName" type="s:string" minOccurs="1" maxOccurs="1"/>
    <s:element minOccurs="0" maxOccurs="1" name="viewFields">
      <s:complexType>
        <s:sequence>
          <s:element name="ViewFields" minOccurs="0" maxOccurs="1">
            <s:complexType>
              <s:sequence>
                <s:element name="FieldRef" type="core:FieldRefDefinitionView"
minOccurs="0" maxOccurs="unbounded" />
              </s:sequence>
            </s:complexType>
          </s:element>
        </s:sequence>
      </s:complexType>
    </s:element>
    <s:element minOccurs="0" maxOccurs="1" name="query">
      <s:complexType>
        <s:sequence>
          <s:element name="Query" type="core:CamlQueryRoot" minOccurs="0" maxOccurs="1"/>
        </s:sequence>
      </s:complexType>
    </s:element>
    <s:element minOccurs="0" maxOccurs="1" name="rowLimit">
      <s:complexType>
        <s:sequence>
          <s:element name="RowLimit" type="core:RowLimitDefinition" minOccurs="0" maxOccurs="1"/>
        </s:sequence>
      </s:complexType>
    </s:element>
    <s:element name="type" type="s:string" minOccurs="0" maxOccurs="1"/>
    <s:element name="makeViewDefault" type="s:boolean" minOccurs="0" maxOccurs="1"/>
  </s:sequence>
</s:complexType>
</s:element>
```

listName: For a definition, see section [2.2.3.3](#).

viewName: Display name of the list view.

viewFields: For a definition, see section [2.2.3.6](#). When the value of the **viewFields** element is empty, the protocol server MUST create the list view with no fields (2) included.

query: For a definition, see section [2.2.3.4](#). When the value of the **query** element is empty, the protocol server MUST create the list view without any additional restriction.

rowLimit: For a definition, see section [2.2.3.5](#). When the **rowLimit** element is not present or the value of the **rowLimit** element is empty, the protocol server MUST use the default value of "0x0064", and the list view MUST support page-by-page displaying of items.

type: For a definition, see section [3.1.4.1.2.2](#).

makeViewDefault: Specifies whether to make the list view the default list view for the specified list (1). The protocol server MUST create the list view as the default list view if "true" is specified. When the **makeViewDefault** element is not present, the protocol server MUST take it as "false".

3.1.4.1.2.2 type

The **type** element specifies the type of a list view. When this element is present, it MUST have one of the values in the following table.

Type	Description
"Calendar"	Represents a calendar list view.
"Grid"	Represents a datasheet list view.
"Html"	Represents a standard HTML list view.

When this element is not present or has an empty value, the protocol server MUST take it with a value of "Html".

When the value of the element is not empty and is not one of the values listed in the table, the protocol server MUST throw a SOAP fault message.

3.1.4.1.2.3 AddViewResponse

The **AddViewResponse** element defines the output parameters for the **AddView** operation. The definition of the **AddViewResponse** element is as follows.

```
<s:element name="AddViewResponse">
  <s:complexType>
    <s:sequence>
      <s:element name="AddViewResult" minOccurs="1" maxOccurs="1">
        <s:complexType>
          <s:sequence>
            <s:element name="View" type="tns:BriefViewDefinition" minOccurs="1"
maxOccurs="1"/>
          </s:sequence>
        </s:complexType>
      </s:element>
    </s:sequence>
  </s:complexType>
</s:element>
```

AddViewResult: Represents the result of the operation. It MUST create the list view and include the resulting **View** element when the operation succeeds. The type of the **View** element is **BriefViewDefinition**, which is specified in section [2.2.4.1](#).

3.1.4.2 DeleteView

The **DeleteView** operation is used to delete the specified list view of the specified list (1). The definition of the **DeleteView** operation is as follows.

```
<wsdl:operation name="DeleteView">
```

```
<wsdl:input message="tns:DeleteViewSoapIn" />
<wsdl:output message="tns:DeleteViewSoapOut" />
</wsdl:operation>
```

The protocol client sends a **DeleteViewSoapIn** request message, and the protocol server responds with a **DeleteViewSoapOut** response message.

3.1.4.2.1 Messages

The following WSDL message definitions are specific to this operation.

3.1.4.2.1.1 DeleteViewSoapIn

The request WSDL message for a **DeleteView** WSDL operation.

The SOAP action value of the message is specified as follows.

```
http://schemas.microsoft.com/sharepoint/soap/DeleteView
```

The SOAP body contains a **DeleteView** element.

3.1.4.2.1.2 DeleteViewSoapOut

The response WSDL message for a **DeleteView** WSDL operation.

The SOAP action value of the message is specified as follows.

```
http://schemas.microsoft.com/sharepoint/soap/DeleteView
```

The SOAP body contains a **DeleteViewResponse** element.

3.1.4.2.2 Elements

The following XML Schema (1) element definitions are specific to this operation.

3.1.4.2.2.1 DeleteView

The **DeleteView** element defines the input parameters of the **DeleteView** operation. The definition of the **DeleteView** element is as follows.

```
<s:element name="DeleteView">
  <s:complexType>
    <s:sequence>
      <s:element name="listName" type="s:string" minOccurs="1" maxOccurs="1"/>
      <s:element name="viewName" type="s:string" minOccurs="0"/>
    </s:sequence>
  </s:complexType>
</s:element>
```

listName: For a definition, see section [2.2.3.3](#).

viewName: For a definition, see section [2.2.3.7](#).

3.1.4.2.2 DeleteViewResponse

The **DeleteViewResponse** element defines the output of the **DeleteView** operation. The protocol server MUST delete the list view and respond with a **DeleteViewResponse** element if the operation succeeded.

The definition of the **DeleteViewResponse** element is as follows.

```
<s:element name="DeleteViewResponse">
  <s:complexType/>
</s:element>
```

3.1.4.3 GetView

The **GetView** operation is used to obtain details of a specified list view of the specified list (1). The definition of the **GetView** operation is as follows.

```
<wsdl:operation name="GetView">
  <wsdl:input message="tns:GetViewSoapIn" />
  <wsdl:output message="tns:GetViewSoapOut" />
</wsdl:operation>
```

The protocol client sends a **GetViewSoapIn** request message, and the protocol server responds with a **GetViewSoapOut** response.

3.1.4.3.1 Messages

The following WSDL message definitions are specific to this operation.

3.1.4.3.1.1 GetViewSoapIn

The request WSDL message for a **GetView** WSDL operation.

The SOAP action value of the message is specified as follows.

```
http://schemas.microsoft.com/sharepoint/soap/GetView
```

The SOAP body contains a **GetView** element.

3.1.4.3.1.2 GetViewSoapOut

The response WSDL message for a **GetView** WSDL operation.

The SOAP action value of the message is specified as follows.

```
http://schemas.microsoft.com/sharepoint/soap/GetView
```

The SOAP body contains a **GetViewResponse** element.

3.1.4.3.2 Elements

The following XML Schema (1) element definitions are specific to this operation.

3.1.4.3.2.1 GetView

The **GetView** element specifies the input parameters of the **GetView** operation.

```
<s:element name="GetView">
  <s:complexType>
    <s:sequence>
      <s:element name="listName" type="s:string" minOccurs="1" maxOccurs="1"/>
      <s:element name="viewName" type="s:string" minOccurs="0"/>
    </s:sequence>
  </s:complexType>
</s:element>
```

listName: Refer to section [2.2.3.3](#).

viewName: Refer to section [2.2.3.7](#).

3.1.4.3.2.2 GetViewResponse

The **GetViewResponse** element specifies the output of the **GetView** operation. The definition of the **GetViewResponse** element is as follows.

```
<s:element name="GetViewResponse">
  <s:complexType>
    <s:sequence>
      <s:element name="GetViewResult" minOccurs="1" maxOccurs="1">
        <s:complexType>
          <s:sequence>
            <s:element name="View" type="tns:BriefViewDefinition" minOccurs="1"
maxOccurs="1"/>
          </s:sequence>
        </s:complexType>
      </s:element>
    </s:sequence>
  </s:complexType>
</s:element>
```

GetViewResult: Represents the result of the operation. The protocol server MUST return a **View** element that contains the details of the specified list view when the operation succeeds. The type of the **View** element is **BriefViewDefinition**, which is specified in section [2.2.4.1](#).

3.1.4.4 GetViewCollection

The **GetViewCollection** operation is used to retrieve the collection of list views of a specified list (1). The definition of the **GetViewCollection** operation is as follows.

```
<wsdl:operation name="GetViewCollection">
  <wsdl:input message="tns:GetViewCollectionSoapIn" />
  <wsdl:output message="tns:GetViewCollectionSoapOut" />
</wsdl:operation>
```

The protocol client sends a **GetViewCollectionSoapIn** request message, and the protocol server responds with a **GetViewCollectionSoapOut** response message.

3.1.4.4.1 Messages

The following WSDL message definitions are specific to this operation.

3.1.4.4.1.1 GetViewCollectionSoapIn

The request WSDL message for a **GetViewCollection** WSDL operation.

The SOAP action value of the message is specified as follows.

```
http://schemas.microsoft.com/sharepoint/soap/GetViewCollection
```

The SOAP body contains a **GetViewCollection** element.

3.1.4.4.1.2 GetViewCollectionSoapOut

The response WSDL message for a **GetViewCollection** WSDL operation.

The SOAP action value of the message is specified as follows.

```
http://schemas.microsoft.com/sharepoint/soap/GetViewCollection
```

The SOAP body contains a **GetViewCollectionResponse** element.

3.1.4.4.2 Elements

The following XML Schema (1) element definitions are specific to this operation.

3.1.4.4.2.1 GetViewCollection

The **GetViewCollection** element defines the input parameter of the **GetViewCollection** operation. The definition of the **GetViewCollection** element is as follows.

```
<s:element name="GetViewCollection">
  <s:complexType>
    <s:sequence>
      <s:element name="listName" type="s:string" minOccurs="1" maxOccurs="1"/>
    </s:sequence>
  </s:complexType>
</s:element>
```

listName: For a definition, see section [2.2.3.3](#).

3.1.4.4.2.2 GetViewCollectionResponse

The **GetViewCollectionResponse** element defines the output of the **GetViewCollection** operation. The definition of the **GetViewCollectionResponse** element is as follows.

```
<s:element name="GetViewCollectionResponse">
  <s:complexType>
    <s:sequence>
      <s:element name="GetViewCollectionResult" minOccurs="1" maxOccurs="1">
        <s:complexType>
```



```

<s:sequence>
  <s:element name="Views" minOccurs="1" maxOccurs="1">
    <s:complexType>
      <s:sequence>
        <s:element name="View" minOccurs="0" maxOccurs="unbounded">
          <s:complexType>
            <s:attributeGroup ref="tns:ViewAttributeGroup"/>
          </s:complexType>
        </s:element>
      </s:sequence>
    </s:complexType>
  </s:element>
</s:sequence>
</s:complexType>
</s:element>
</s:sequence>
</s:complexType>
</s:element>
</s:sequence>
</s:complexType>
</s:element>

```

GetViewCollectionResult: Represents the result of the operation. It MUST include the collection of **View** elements of the specified list (1), which includes an attribute group of type **ViewAttributeGroup**. The attribute group **ViewAttributeGroup** is specified in section [2.2.8.1](#), with the following exception: The **Url** attribute MUST be the **server-relative URL** of the list view.

3.1.4.5 GetViewHtml

The **GetViewHtml** operation is used to obtain details of a specified list view of the specified list (1), including display properties in CAML and HTML. The definition of the **GetViewHtml** operation is as follows.

```

<wsdl:operation name="GetViewHtml">
  <wsdl:input message="tns:GetViewHtmlSoapIn" />
  <wsdl:output message="tns:GetViewHtmlSoapOut" />
</wsdl:operation>

```

The protocol client sends a **GetViewHtmlSoapIn** request message, and the protocol server responds with a **GetViewHtmlSoapOut** response message.

3.1.4.5.1 Messages

The following WSDL message definitions are specific to this operation.

3.1.4.5.1.1 GetViewHtmlSoapIn

The request WSDL message for a **GetViewHtml** WSDL operation.

The SOAP action value of the message is specified as follows.

```

http://schemas.microsoft.com/sharepoint/soap/GetViewHtml

```

The SOAP body contains a **GetViewHtml** element.

3.1.4.5.1.2 GetViewHtmlSoapOut

The response WSDL message for a **GetViewHtml** WSDL operation.

The SOAP action value of the message is specified as follows.

```
http://schemas.microsoft.com/sharepoint/soap/GetViewHtml
```

The SOAP body contains a **GetViewHtmlResponse** element.

3.1.4.5.2 Elements

The following XML Schema (1) element definitions are specific to this operation.

3.1.4.5.2.1 GetViewHtml

The **GetViewHtml** element defines the input parameters for the **GetViewHtml** operation. The definition of the **GetViewHtml** element is as follows.

```
<s:element name="GetViewHtml">
  <s:complexType>
    <s:sequence>
      <s:element name="listName" type="s:string" minOccurs="1" maxOccurs="1"/>
      <s:element name="viewName" type="s:string" minOccurs="0" maxOccurs="1"/>
    </s:sequence>
  </s:complexType>
</s:element>
```

listName: For a definition, see section [2.2.3.3](#).

viewName: For a definition, see section [2.2.3.7](#).

3.1.4.5.2.2 GetViewHtmlResponse

The **GetViewHtmlResponse** element defines the output parameters for the **GetViewHtml** operation. The definition of the **GetViewHtmlResponse** element is as follows.

```
<s:element name="GetViewHtmlResponse">
  <s:complexType>
    <s:sequence>
      <s:element name="GetViewHtmlResult" minOccurs="1" maxOccurs="1">
        <s:complexType>
          <s:sequence>
            <s:element name="View" type="core:ViewDefinition" minOccurs="1" maxOccurs="1"/>
          </s:sequence>
        </s:complexType>
      </s:element>
    </s:sequence>
  </s:complexType>
</s:element>
```

GetViewHtmlResult: Represents the result of the operation. It MUST include the corresponding **View** element when the operation succeeds. The type of the **View** element is specified in [\[MS-WSSCAML\]](#) section 2.3.2.17.

3.1.4.6 UpdateView

The **UpdateView** operation is used to update the specified list view, without the display properties. The definition of the **UpdateView** element is as follows.

```
<wsdl:operation name="UpdateView">
  <wsdl:input message="tns:UpdateViewSoapIn" />
  <wsdl:output message="tns:UpdateViewSoapOut" />
</wsdl:operation>
```

The protocol client sends an **UpdateViewSoapIn** request message, and the protocol server responds with an **UpdateViewSoapOut** response message.

3.1.4.6.1 Messages

The following WSDL message definitions are specific to this operation.

3.1.4.6.1.1 UpdateViewSoapIn

The request WSDL message for an **UpdateView** WSDL operation.

The SOAP action value of the message is specified as follows.

```
http://schemas.microsoft.com/sharepoint/soap/UpdateView
```

The SOAP body contains an **UpdateView** element.

3.1.4.6.1.2 UpdateViewSoapOut

The response WSDL message for an **UpdateView** WSDL operation.

The SOAP action value of the message is specified as follows.

```
http://schemas.microsoft.com/sharepoint/soap/UpdateView
```

The SOAP body contains an **UpdateViewResponse** element.

3.1.4.6.2 Elements

The following XML Schema (1) element definitions are specific to this operation.

3.1.4.6.2.1 UpdateView

The **UpdateView** element defines the input parameters for the **UpdateView** operation. The definition of the **UpdateView** element is as follows.

```
<s:element name="UpdateView">
  <s:complexType>
    <s:sequence>
      <s:element name="listName" type="s:string" minOccurs="1" maxOccurs="1" />
      <s:element name="viewName" type="s:string" minOccurs="0" maxOccurs="1" />
      <s:element name="viewProperties" minOccurs="0" maxOccurs="1" />
      <s:element name="query" minOccurs="0" maxOccurs="1" />
    </s:sequence>
  </s:complexType>
</s:element>
```

```

    <s:element name="viewFields" minOccurs="0" maxOccurs="1" />
    <s:element name="aggregations" minOccurs="0" maxOccurs="1" />
    <s:element name="formats" minOccurs="0" maxOccurs="1" />
    <s:element name="rowLimit" minOccurs="0" maxOccurs="1" />
  </s:sequence>
</s:complexType>
</s:element>

```

listName: For a definition, see section [2.2.3.3](#).

viewName: For a definition, see section [2.2.3.7](#).

viewProperties: For a definition, see section [2.2.3.8](#).

query: For a definition, see section [2.2.3.4](#).

viewFields: For a definition, see section [2.2.3.6](#).

aggregations: For a definition, see section [2.2.3.1](#).

formats: For a definition, see section [2.2.3.2](#).

rowLimit: For a definition, see section [2.2.3.5](#).

3.1.4.6.2.2 UpdateViewResponse

The **UpdateViewResponse** element defines the output parameters for the **UpdateView** operation. The definition of the **UpdateViewResponse** element is as follows.

```

<s:element name="UpdateViewResponse">
  <s:complexType>
    <s:sequence>
      <s:element name="UpdateViewResult" minOccurs="1" maxOccurs="1">
        <s:complexType>
          <s:sequence>
            <s:element name="View" type="tns:BriefViewDefinition" minOccurs="1"
maxOccurs="1"/>
          </s:sequence>
        </s:complexType>
      </s:element>
    </s:sequence>
  </s:complexType>
</s:element>

```

UpdateViewResult: If the protocol server successfully updates the list view, it MUST return a **View** element that specifies the list view. The type of the **View** element is **BriefViewDefinition**, which is specified in section [2.2.4.1](#).

3.1.4.7 UpdateViewHtml

The **UpdateViewHtml** operation is used to update a list view for a specified list (1), including display properties in CAML and HTML. The definition of the **UpdateViewHtml** element is as follows.

```

<wsdl:operation name="UpdateViewHtml">
  <wsdl:input message="tns:UpdateViewHtmlSoapIn" />

```

```
<wsdl:output message="tns:UpdateViewHtmlSoapOut" />
</wsdl:operation>
```

The protocol client sends an **UpdateViewHtmlSoapIn** request message, and the protocol server responds with an **UpdateViewHtmlSoapOut** response message.

When processing this call, the protocol server MUST perform the same actions as for the **UpdateViewHtml2** method (section [3.1.4.8](#)), with the *openApplicationExtension* parameter as empty.

3.1.4.7.1 Messages

The following WSDL message definitions are specific to this operation.

3.1.4.7.1.1 UpdateViewHtmlSoapIn

The request WSDL message for an **UpdateViewHtml** WSDL operation.

The SOAP action value of the message is specified as follows.

```
http://schemas.microsoft.com/sharepoint/soap/UpdateViewHtml
```

The SOAP body contains an **UpdateViewHtml** element.

3.1.4.7.1.2 UpdateViewHtmlSoapOut

The response WSDL message for an **UpdateViewHtml** WSDL operation.

The SOAP action value of the message is specified as follows.

```
http://schemas.microsoft.com/sharepoint/soap/UpdateViewHtml
```

The SOAP body contains an **UpdateViewHtmlResponse** element.

3.1.4.7.2 Elements

The following XML Schema (1) element definitions are specific to this operation.

3.1.4.7.2.1 UpdateViewHtml

The **UpdateViewHtml** element defines the input parameters for the **UpdateViewHtml** operation. The definition of the **UpdateViewHtml** element is as follows.

```
<s:element name="UpdateViewHtml">
  <s:complexType>
    <s:sequence>
      <s:element name="listName" type="s:string" minOccurs="1" maxOccurs="1" />
      <s:element name="viewName" type="s:string" minOccurs="0" maxOccurs="1" />
      <s:element name="viewProperties" minOccurs="0" maxOccurs="1" />
      <s:element name="toolbar" minOccurs="0" maxOccurs="1" />
      <s:element name="viewHeader" minOccurs="0" maxOccurs="1" />
      <s:element name="viewBody" minOccurs="0" maxOccurs="1" />
      <s:element name="viewFooter" minOccurs="0" maxOccurs="1" />
    </s:sequence>
  </s:complexType>
</s:element>
```

```

    <s:element name="viewEmpty" minOccurs="0" maxOccurs="1" />
    <s:element name="rowLimitExceeded" minOccurs="0" maxOccurs="1" />
    <s:element name="query" minOccurs="0" maxOccurs="1" />
    <s:element name="viewFields" minOccurs="0" maxOccurs="1" />
      <s:element name="aggregations" minOccurs="0" maxOccurs="1" />
    <s:element name="formats" minOccurs="0" maxOccurs="1" />
    <s:element name="rowLimit" minOccurs="0" maxOccurs="1" />
  </s:sequence>
</s:complexType>
</s:element>

```

All parameters are as specified by the **UpdateViewHtml2** method (section [3.1.4.8](#)), with the following exception: This method does not use *openApplicationExtension*.

3.1.4.7.2.2 UpdateViewHtmlResponse

The **UpdateViewHtmlResponse** element defines the output parameters for the **UpdateViewHtml** operation. The definition of the **UpdateViewHtmlResponse** element is as follows.

```

<s:element name="UpdateViewHtmlResponse">
  <s:complexType>
    <s:sequence>
      <s:element name="UpdateViewHtmlResult" minOccurs="1" maxOccurs="1">
        <s:complexType>
          <s:sequence>
            <s:element name="View" type="core:ViewDefinition" minOccurs="1" maxOccurs="1"/>
          </s:sequence>
        </s:complexType>
      </s:element>
    </s:sequence>
  </s:complexType>
</s:element>

```

UpdateViewHtmlResult: If the protocol server successfully updates the list view, it MUST return a **View** element that specifies the list view. The type of the **View** element is **ViewDefinition**, which is specified in [\[MS-WSSCAML\]](#) section 2.3.2.17 (ViewDefinition Type).

3.1.4.8 UpdateViewHtml2

The **UpdateViewHtml2** operation [<1>](#) is used to obtain details of a specified list view of the specified list (1), including display properties in CAML and HTML. The definition of the **UpdateViewHtml2** operation is as follows.

```

<wsdl:operation name="UpdateViewHtml2">
  <wsdl:input message="tns:UpdateViewHtml2SoapIn" />
  <wsdl:output message="tns:UpdateViewHtml2SoapOut" />
</wsdl:operation>

```

The protocol client sends an **UpdateViewHtml2SoapIn** request message, and the protocol server responds with an **UpdateViewHtml2SoapOut** response message.

3.1.4.8.1 Messages

The following WSDL message definitions are specific to this operation.

3.1.4.8.1.1 UpdateViewHtml2SoapIn

The request WSDL message for an **UpdateViewHtml2** WSDL operation.

The SOAP action value of the message is specified as follows.

```
http://schemas.microsoft.com/sharepoint/soap/UpdateViewHtml2
```

The SOAP body contains an **UpdateViewHtml2** element.

3.1.4.8.1.2 UpdateViewHtml2SoapOut

The response WSDL message for an **UpdateViewHtml2** WSDL operation.

The SOAP action value of the message is specified as follows.

```
http://schemas.microsoft.com/sharepoint/soap/UpdateViewHtml2
```

The SOAP body contains an **UpdateViewHtml2Response** element.

3.1.4.8.2 Elements

The following XML Schema (1) element definitions are specific to this operation.

3.1.4.8.2.1 UpdateViewHtml2

The **UpdateViewHtml2** element defines the input parameters for the **UpdateViewHtml2** operation. The definition of the **UpdateViewHtml2** element is as follows.

```
<s:element name="UpdateViewHtml2">
  <s:complexType>
    <s:sequence>
      <s:element name="listName" type="s:string" minOccurs="1" maxOccurs="1" />
      <s:element name="viewName" type="s:string" minOccurs="0" maxOccurs="1" />
      <s:element name="viewProperties" minOccurs="0" maxOccurs="1" />
      <s:element name="toolbar" minOccurs="0" maxOccurs="1" />
      <s:element name="viewHeader" minOccurs="0" maxOccurs="1" />
      <s:element name="viewBody" minOccurs="0" maxOccurs="1" />
      <s:element name="viewFooter" minOccurs="0" maxOccurs="1" />
      <s:element name="viewEmpty" minOccurs="0" maxOccurs="1" />
      <s:element name="rowLimitExceeded" minOccurs="0" maxOccurs="1" />
      <s:element name="query" minOccurs="0" maxOccurs="1" />
      <s:element name="viewFields" minOccurs="0" maxOccurs="1" />
        <s:element name="aggregations" minOccurs="0" maxOccurs="1" />
      <s:element name="formats" minOccurs="0" maxOccurs="1" />
      <s:element name="rowLimit" minOccurs="0" maxOccurs="1" />
      <s:element name="openApplicationExtension" type="s:string" minOccurs="0" maxOccurs="1" />
    </s:sequence>
  </s:complexType>
</s:element>
```

listName: Refer to section [2.2.3.3](#) for a definition.

viewName: Refer to section [2.2.3.7](#) for a definition.

viewProperties: Refer to section [2.2.3.8](#) for a definition.

toolbar: Refer to section [3.1.4.8.2.2](#) for a definition.

viewHeader: Refer to section [3.1.4.8.2.3](#) for a definition.

viewBody: Refer to section [3.1.4.8.2.4](#) for a definition.

viewFooter: Refer to section [3.1.4.8.2.4](#) for a definition.

viewEmpty: Refer to section [3.1.4.8.2.4](#) for a definition.

rowLimitExceeded: Refer to section [3.1.4.8.2.7](#) for a definition.

query: Refer to section [2.2.3.4](#) for a definition.

viewFields: Refer to section [2.2.3.6](#) for a definition.

aggregations: Refer to section [2.2.3.1](#) for a definition.

formats: Refer to section [2.2.3.2](#) for a definition.

rowLimit: Refer to section [2.2.3.5](#) for a definition.

openApplicationExtension: Specifies what kind of application to use to edit the view. The protocol server can look up the application that is supposed to use that extension, and it can use that application to edit this view.

3.1.4.8.2.2 toolbar

The **toolbar** element specifies the rendering of the toolbar of a list (1). The definition of the **toolbar** element is as follows.

```
<s:element name="toolbar">
  <s:complexType>
    <s:sequence>
      <s:element name="Toolbar" type="core:ToolbarDefinition" minOccurs="0" maxOccurs="1" />
    </s:sequence>
  </s:complexType>
</s:element>
```

The **Toolbar** element is specified in [\[MS-WSSCAML\]](#) section 2.3.2.17.3 (Child Elements).

3.1.4.8.2.3 viewHeader

The **viewHeader** element specifies the implementation-specific rendering of the header, or the top, of a **list view page**. The definition of the **viewHeader** element is as follows.

```
<s:element name="viewHeader">
  <s:complexType>
    <s:sequence>
      <s:element name="ViewHeader" minOccurs="0" maxOccurs="1">
        <s:complexType>
          <s:sequence>
```



```

        <s:any minOccurs="0" maxOccurs="unbounded" namespace="##any"
processContents="skip" />
    </s:sequence>
    <s:anyAttribute processContents="skip" />
</s:complexType>
</s:element>
</s:sequence>
</s:complexType>
</s:element>

```

The **ViewHeader** element is specified in [\[MS-WSSCAML\]](#) section 2.3.2.17.3 (Child Elements).

3.1.4.8.2.4 viewBody

The **viewBody** element specifies the implementation-specific rendering of the main, or the middle, portion of a list view page. The definition of the **viewBody** element is as follows.

```

<s:element name="viewBody">
  <s:complexType>
    <s:sequence>
      <s:element name="ViewBody" minOccurs="0" maxOccurs="1">
        <s:complexType>
          <s:sequence>
            <s:any minOccurs="0" maxOccurs="unbounded" namespace="##any"
processContents="skip" />
          </s:sequence>
          <s:anyAttribute processContents="skip" />
        </s:complexType>
      </s:element>
    </s:sequence>
  </s:complexType>
</s:element>

```

The **viewBody** element is specified in [\[MS-WSSCAML\]](#) section 2.3.2.17.3 (Child Elements).

3.1.4.8.2.5 viewFooter

The **viewFooter** element specifies the implementation-specific rendering of the footer, or the bottom, of a list view page. The definition of the **viewFooter** element is as follows.

```

<s:element name="viewFooter">
  <s:complexType>
    <s:sequence>
      <s:element name="ViewFooter" minOccurs="0" maxOccurs="1">
        <s:complexType>
          <s:sequence>
            <s:any minOccurs="0" maxOccurs="unbounded" namespace="##any"
processContents="skip" />
          </s:sequence>
          <s:anyAttribute processContents="skip" />
        </s:complexType>
      </s:element>
    </s:sequence>
  </s:complexType>
</s:element>

```

The **viewFooter** element is specified in [\[MS-WSSCAML\]](#) section 2.3.2.17.3 (Child Elements).

3.1.4.8.2.6 viewEmpty

The **viewEmpty** element specifies the message to be displayed when no items are in a list view. The definition of the **viewEmpty** element is as follows.

```
<s:element minOccurs="0" maxOccurs="1" name="viewEmpty">
  <s:complexType>
    <s:sequence>
      <s:element name="ViewEmpty" minOccurs="0" maxOccurs="1">
        <s:complexType>
          <s:sequence>
            <s:any minOccurs="0" maxOccurs="unbounded" namespace="##any"
processContents="skip" />
          </s:sequence>
          <s:anyAttribute processContents="skip" />
        </s:complexType>
      </s:element>
    </s:sequence>
  </s:complexType>
</s:element>
```

The **viewEmpty** element is specified in [\[MS-WSSCAML\]](#) section 2.3.2.17.3 (Child Elements).

3.1.4.8.2.7 rowLimitExceeded

The **rowLimitExceeded** element specifies the implementation-specific rendering of additional items when the number of items exceeds the value specified in the **rowLimit** element, but the list view is not set to support displaying items in multiple pages. The definition of the **rowLimitExceeded** element is as follows.

```
<s:element minOccurs="0" maxOccurs="1" name="rowLimitExceeded">
  <s:complexType>
    <s:sequence>
      <s:element name="RowLimitExceeded" minOccurs="0" maxOccurs="1">
        <s:complexType>
          <s:sequence>
            <s:any minOccurs="0" maxOccurs="unbounded" namespace="##any"
processContents="skip" />
          </s:sequence>
          <s:anyAttribute processContents="skip" />
        </s:complexType>
      </s:element>
    </s:sequence>
  </s:complexType>
</s:element>
```

The **rowLimitExceeded** element is specified in [\[MS-WSSCAML\]](#) section 2.3.2.17.3 (Child Elements).

3.1.4.8.2.8 UpdateViewHtml2Response

The **UpdateViewHtml2Response** element defines the output parameters for the **UpdateViewHtml2** operation. The definition of the **UpdateViewHtml2Response** element is as follows.

```
<s:element name="UpdateViewHtml2Response">
  <s:complexType>
    <s:sequence>
      <s:element name="UpdateViewHtml2Result" minOccurs="1" maxOccurs="1">
        <s:complexType>
          <s:sequence>
            <s:element name="View" type="core:ViewDefinition" minOccurs="1" maxOccurs="1"/>
          </s:sequence>
        </s:complexType>
      </s:element>
    </s:sequence>
  </s:complexType>
</s:element>
```

UpdateViewHtml2Result: If the protocol server successfully updates the list view, it **MUST** return a **View** element that specifies the list view. The type of the **View** element is **ViewDefinition**, which is specified in [\[MS-WSSCAML\]](#) section 2.3.2.17 (View Definition Type).

3.1.5 Timer Events

None.

3.1.6 Other Local Events

None.

4 Protocol Examples

The following example demonstrates the creation, update, and deletion of a list view.

The user creates a list view by calling the **AddView** Web method with the following information in the request message.

```
<AddView xmlns="http://schemas.microsoft.com/sharepoint/soap/">
  <listName>{C2294E28-05B6-4486-804A-80F0189B992B}</listName>
  <viewName>ViewA</viewName>
  <viewFields>
    <ViewFields>
      <FieldRef Name='ID' />
      <FieldRef Name='Title' />
    </ViewFields>
  </viewFields>
  <query>
    <Query>
      <OrderBy>
        <FieldRef Name='ID' />
      </OrderBy>
    </Query>
  </query>
  <rowLimit>
    <RowLimit Paged='TRUE'>100</RowLimit>
  </rowLimit>
  <type>HTML</type>
  <makeViewDefault>>false</makeViewDefault>
</AddView>
```

The protocol server returns the following **AddViewResponse** element in the response message.

```
<AddViewResponse xmlns="http://schemas.microsoft.com/sharepoint/soap/">
  <AddViewResult>
    <View
      Type='HTML'
      Url='/Lists/ListA/ViewA.aspx'
      Personal='FALSE'
      DisplayName='ViewA'
      DefaultView='FALSE'
      Name='{4807AA00-190A-47CB-B2E0-8C13C04149BD}'>
      <Query>
        <OrderBy>
          <FieldRef Name='ID' />
        </OrderBy>
      </Query>
      <ViewFields>
        <FieldRef Name='ID' />
        <FieldRef Name='Title' />
      </ViewFields>
      <rowLimit>
        <RowLimit Paged='TRUE'>100</RowLimit>
      </rowLimit>
    </View>
  </AddViewResult>
</AddViewResponse>
```

To verify that the previous list view was added to the list (1), the user retrieves the collection by calling the **GetViewCollection** Web method with the following information in the request message.

```
<GetViewCollection xmlns="http://schemas.microsoft.com/sharepoint/soap/">
  <listName>{C2294E28-05B6-4486-804A-80F0189B992B}</listName>
</GetViewCollection>
```

The protocol server returns the following **GetViewCollectionResponse** element in the response message.

```
<GetViewCollectionResponse xmlns='http://schemas.microsoft.com/sharepoint/soap/'>
  <GetViewCollectionResult >
    <Views >
      <View
Name='{4807AA00-190A-47CB-B2E0-8C13C04149BD}'
DefaultView='TRUE'
Type='HTML'
DisplayName='ViewA'
Url='/Lists/ListA/ViewA.aspx'
Level='1'
BaseViewID='1'
ContentTypeID='0x'
ImageUrl='/_layouts/images/dlicon.png'>
      </View>
    </Views>
  </GetViewCollectionResult>
</GetViewCollectionResponse>
```

The user updates the fields of the list view by calling the **UpdateView** Web method with the following information in the request message.

```
<UpdateView xmlns="http://schemas.microsoft.com/sharepoint/soap/">
  <listName>{C2294E28-05B6-4486-804A-80F0189B992B}</listName>
  <viewName>{4807AA00-190A-47CB-B2E0-8C13C04149BD}</viewName>
  <viewFields>
    <ViewFields >
      <FieldRef Name='ID'></FieldRef>
      <FieldRef Name='Title'></FieldRef>
      <FieldRef Name='Modified'></FieldRef>
      <FieldRef Name='Editor'></FieldRef>
    </ViewFields>
  </viewFields>
</UpdateView>
```

The protocol server returns the following **UpdateViewResponse** element in the response message.

```
<UpdateViewResponse xmlns="http://schemas.microsoft.com/sharepoint/soap/">
  <UpdateViewResult>
    <View
Name='{4807AA00-190A-47CB-B2E0-8C13C04149BD}'
Type='HTML'
  DisplayName='ViewA'
  Url='/Lists/ListA/ViewA.aspx'
  Level='1'
  BaseViewID='1'
  ContentTypeID='0x'
    </View>
  </UpdateViewResult>
</UpdateViewResponse>
```

```

ImageUrl='/_layouts/images/dlicon.png'>
  <Query>
    <OrderBy>
      <FieldRef Name='ID' />
    </OrderBy>
  </Query>
  <ViewFields>
    <FieldRef Name='ID' />
    <FieldRef Name='Title' />
    <FieldRef Name='Modified' />
    <FieldRef Name='Editor' />
  </ViewFields>
  <rowLimit>
    <RowLimit Paged='TRUE'>100</RowLimit>
  </rowLimit>
  <Formats>
    <FormatDef Type='RowHeight' Value='Auto' />
    <Format Name='ID'>
      <FormatDef Type='ColWidth' Value='64' />
    </Format>
    <Format Name='Title'>
      <FormatDef Type='WrapText' Value='1' />
      <FormatDef Type='ColWidth' Value='52' />
    </Format>
  </Formats>
  <Aggregations Value='Off'>
    <FieldRef Name='Title' Type='COUNT' />
  </Aggregations>
</View>
</UpdateViewResult>
</UpdateViewResponse>

```

The user deletes the list view by calling the **DeleteView** Web method with the following information in the request message.

```

<DeleteView xmlns="http://schemas.microsoft.com/sharepoint/soap/">
  <listName>{C2294E28-05B6-4486-804A-80F0189B992B}</listName>
  <viewName>{4807AA00-190A-47CB-B2E0-8C13C04149BD}</viewName>
</DeleteView>

```

The protocol server returns the following **DeleteViewResponse** element in the response message.

```

<DeleteViewResponse
xmlns="http://schemas.microsoft.com/sharepoint/soap/">

```

5 Security

5.1 Security Considerations for Implementers

None.

5.2 Index of Security Parameters

None.

6 Appendix A: Full WSDL

For ease of implementation, the full WSDL is provided here.

```
<wsdl:definitions xmlns:soap="http://schemas.xmlsoap.org/wsdl/soap/"
xmlns:tns="http://schemas.microsoft.com/sharepoint/soap/"
xmlns:s="http://www.w3.org/2001/XMLSchema"
xmlns:soap12="http://schemas.xmlsoap.org/wsdl/soap12/"
xmlns:http="http://schemas.xmlsoap.org/wsdl/http/"
targetNamespace="http://schemas.microsoft.com/sharepoint/soap/"
xmlns:wSDL="http://schemas.xmlsoap.org/wsdl/"
xmlns:core="http://schemas.microsoft.com/sharepoint/wire">
  <wsdl:types>
    <s:schema elementFormDefault="qualified"
targetNamespace="http://schemas.microsoft.com/sharepoint/soap/">
      <s:import namespace="http://schemas.microsoft.com/sharepoint/wire"
schemaLocation="wswire.xsd"/>
      <s:import namespace="http://www.w3.org/2001/XMLSchema" />
    <s:element name="GetView">
      <s:complexType>
        <s:sequence>
          <s:element name="listName" type="s:string" minOccurs="1" maxOccurs="1"/>
          <s:element name="viewName" type="s:string" minOccurs="0"/>
        </s:sequence>
      </s:complexType>
    </s:element>
    <s:element name="GetViewResponse">
      <s:complexType>
        <s:sequence>
          <s:element name="GetViewResult" minOccurs="1" maxOccurs="1">
            <s:complexType>
              <s:sequence>
                <s:element name="View" type="tns:BriefViewDefinition" minOccurs="1"
maxOccurs="1"/>
              </s:sequence>
            </s:complexType>
          </s:element>
        </s:sequence>
      </s:complexType>
    </s:element>
    <s:element name="GetViewHtml">
      <s:complexType>
        <s:sequence>
          <s:element name="listName" type="s:string" minOccurs="1" maxOccurs="1"/>
          <s:element name="viewName" type="s:string" minOccurs="0" maxOccurs="1"/>
        </s:sequence>
      </s:complexType>
    </s:element>
    <s:element name="GetViewHtmlResponse">
      <s:complexType>
        <s:sequence>
          <s:element name="GetViewHtmlResult" minOccurs="1" maxOccurs="1">
            <s:complexType>
              <s:sequence>
                <s:element name="View" type="core:ViewDefinition" minOccurs="1" maxOccurs="1"/>
              </s:sequence>
            </s:complexType>
          </s:element>
        </s:sequence>
      </s:complexType>
    </s:element>
  </wsdl:types>

```



```

    </s:complexType>
</s:element>
<s:element name="DeleteView">
  <s:complexType>
    <s:sequence>
      <s:element name="listName" type="s:string" minOccurs="1" maxOccurs="1"/>
      <s:element name="viewName" type="s:string" minOccurs="0"/>
    </s:sequence>
  </s:complexType>
</s:element>
<s:element name="DeleteViewResponse">
  <s:complexType/>
</s:element>
<s:element name="AddView">
  <s:complexType>
    <s:sequence>
      <s:element name="listName" type="s:string" minOccurs="1" maxOccurs="1"/>
      <s:element name="viewName" type="s:string" minOccurs="1" maxOccurs="1"/>
      <s:element name="viewFields" minOccurs="1" maxOccurs="1">
        </s:element>
      <s:element name="query" minOccurs="1" maxOccurs="1" >
        </s:element>
      <s:element name="rowLimit" minOccurs="0" maxOccurs="1">
        </s:element>
      <s:element name="type" type="s:string" minOccurs="0" maxOccurs="1"/>
      <s:element name="makeViewDefault" type="s:boolean" minOccurs="0" maxOccurs="1"/>
    </s:sequence>
  </s:complexType>
</s:element>
<s:element name="AddViewResponse">
  <s:complexType>
    <s:sequence>
      <s:element name="AddViewResult" minOccurs="1" maxOccurs="1">
        <s:complexType>
          <s:sequence>
            <s:element name="View" type="tns:BriefViewDefinition" minOccurs="1"
maxOccurs="1"/>
          </s:sequence>
        </s:complexType>
      </s:element>
    </s:sequence>
  </s:complexType>
</s:element>
<s:element name="GetViewCollection">
  <s:complexType>
    <s:sequence>
      <s:element name="listName" type="s:string" minOccurs="1" maxOccurs="1"/>
    </s:sequence>
  </s:complexType>
</s:element>
<s:element name="GetViewCollectionResponse">
  <s:complexType>
    <s:sequence>
      <s:element name="GetViewCollectionResult" minOccurs="1" maxOccurs="1">
        <s:complexType>
          <s:sequence>
            <s:element name="Views" minOccurs="1" maxOccurs="1">
              <s:complexType>
                <s:sequence>
                  <s:element name="View" minOccurs="0" maxOccurs="unbounded">

```

```

        <s:complexType>
            <s:attributeGroup ref="tns:ViewAttributeGroup"/>
        </s:complexType>
    </s:element>
    </s:sequence>
</s:complexType>
</s:element>
</s:sequence>
</s:complexType>
</s:element>
</s:sequence>
</s:complexType>
</s:element>
<s:element name="UpdateView">
    <s:complexType>
        <s:sequence>
            <s:element minOccurs="1" maxOccurs="1" name="listName" type="s:string" />
            <s:element minOccurs="0" maxOccurs="1" name="viewName" type="s:string" />
            <s:element minOccurs="0" maxOccurs="1" name="viewProperties">
                <s:complexType>
                    <s:sequence>
                        <s:element name="View" type="tns:UpdateViewPropertiesDefinition" minOccurs="0"
maxOccurs="1"/>
                    </s:sequence>
                </s:complexType>
            </s:element>
            <s:element minOccurs="0" maxOccurs="1" name="query">
                <s:complexType>
                    <s:sequence>
                        <s:element name="Query" type="core:CamlQueryRoot" minOccurs="0" maxOccurs="1"/>
                    </s:sequence>
                </s:complexType>
            </s:element>
            <s:element minOccurs="0" maxOccurs="1" name="viewFields">
                <s:complexType>
                    <s:sequence>
                        <s:element name="ViewFields" minOccurs="0" maxOccurs="1">
                            <s:complexType>
                                <s:sequence>
                                    <s:element name="FieldRef" type="core:FieldRefDefinitionView" minOccurs="0"
maxOccurs="unbounded" />
                                </s:sequence>
                            </s:complexType>
                        </s:element>
                    </s:sequence>
                </s:complexType>
            </s:element>
            <s:element minOccurs="0" maxOccurs="1" name="aggregations">
                <s:complexType>
                    <s:sequence>
                        <s:element name="Aggregations" type="core:AggregationsDefinition" minOccurs="0"
maxOccurs="1"/>
                    </s:sequence>
                </s:complexType>
            </s:element>
            <s:element minOccurs="0" maxOccurs="1" name="formats">
                <s:complexType>
                    <s:sequence>

```

```

        <s:element name="Formats" type="core:ViewFormatDefinitions" minOccurs="0"
maxOccurs="1"/>
</s:sequence>
</s:complexType>
    <s:element>
        <s:element minOccurs="0" maxOccurs="1" name="rowLimit">
            <s:complexType>
                <s:sequence>
                    <s:element name="RowLimit" type="core:RowLimitDefinition" minOccurs="0" maxOccurs="1"/>
                </s:sequence>
            </s:complexType>
        </s:element>
    </s:sequence>
</s:complexType>
    <s:element>
        <s:sequence>
            <s:element name="UpdateViewResponse">
                <s:complexType>
                    <s:sequence>
                        <s:element name="UpdateViewResult" minOccurs="1" maxOccurs="1">
                            <s:complexType>
                                <s:sequence>
                                    <s:element name="View" type="tns:BriefViewDefinition" minOccurs="1"
maxOccurs="1"/>
                                </s:sequence>
                            </s:complexType>
                        </s:element>
                    </s:sequence>
                </s:complexType>
            </s:element>
            <s:element name="UpdateViewHtml">
                <s:complexType>
                    <s:sequence>
                        <s:element minOccurs="1" maxOccurs="1" name="listName" type="s:string" />
                        <s:element minOccurs="0" maxOccurs="1" name="viewName" type="s:string" />
                        <s:element minOccurs="0" maxOccurs="1" name="viewProperties">
                            <s:complexType>
                                <s:sequence>
                                    <s:element name="View" type="tns:UpdateViewPropertiesDefinition" minOccurs="0"
maxOccurs="1"/>
                                </s:sequence>
                            </s:complexType>
                        </s:element>
                    </s:sequence>
                </s:complexType>
            </s:element>
            <s:element minOccurs="0" maxOccurs="1" name="toolbar">
                <s:complexType>
                    <s:sequence>
                        <s:element name="Toolbar" type="core:ToolbarDefinition" minOccurs="0" maxOccurs="1" />
                    </s:sequence>
                </s:complexType>
            </s:element>
            <s:element minOccurs="0" maxOccurs="1" name="viewHeader">
                <s:complexType>
                    <s:sequence>
                        <s:element name="ViewHeader" minOccurs="0" maxOccurs="1">
                            <s:complexType>
                                <s:sequence>
                                    <s:any minOccurs="0" maxOccurs="unbounded" namespace="##any"
processContents="skip" />
                                </s:sequence>
                            </s:complexType>
                        </s:element>
                    </s:sequence>
                </s:complexType>
            </s:element>
        </s:sequence>
    </s:element>

```

```

        </s:complexType>
      </s:element>
    </s:sequence>
  </s:complexType>
</s:element>
<s:element minOccurs="0" maxOccurs="1" name="viewBody">
  <s:complexType>
    <s:sequence>
      <s:element name="ViewBody" minOccurs="0" maxOccurs="1">
        <s:complexType>
          <s:sequence>
            <s:any minOccurs="0" maxOccurs="unbounded" namespace="##any"
processContents="skip" />
          </s:sequence>
          <s:anyAttribute processContents="skip" />
        </s:complexType>
      </s:element>
    </s:sequence>
  </s:complexType>
</s:element>
<s:element minOccurs="0" maxOccurs="1" name="viewFooter">
  <s:complexType>
    <s:sequence>
      <s:element name="ViewFooter" minOccurs="0" maxOccurs="1">
        <s:complexType>
          <s:sequence>
            <s:any minOccurs="0" maxOccurs="unbounded" namespace="##any"
processContents="skip" />
          </s:sequence>
          <s:anyAttribute processContents="skip" />
        </s:complexType>
      </s:element>
    </s:sequence>
  </s:complexType>
</s:element>
<s:element minOccurs="0" maxOccurs="1" name="viewEmpty">
  <s:complexType>
    <s:sequence>
      <s:element name="ViewEmpty" minOccurs="0" maxOccurs="1">
        <s:complexType>
          <s:sequence>
            <s:any minOccurs="0" maxOccurs="unbounded" namespace="##any"
processContents="skip" />
          </s:sequence>
          <s:anyAttribute processContents="skip" />
        </s:complexType>
      </s:element>
    </s:sequence>
  </s:complexType>
</s:element>
<s:element minOccurs="0" maxOccurs="1" name="rowLimitExceeded">
  <s:complexType>
    <s:sequence>
      <s:element name="RowLimitExceeded" minOccurs="0" maxOccurs="1">
        <s:complexType>
          <s:sequence>
            <s:any minOccurs="0" maxOccurs="unbounded" namespace="##any"
processContents="skip" />
          </s:sequence>
        </s:complexType>
      </s:element>
    </s:sequence>
  </s:complexType>
</s:element>

```

```

        <s:anyAttribute processContents="skip" />
      </s:complexType>
    </s:element>
  </s:sequence>
</s:complexType>
</s:element>
  <s:element minOccurs="0" maxOccurs="1" name="query">
    <s:complexType>
      <s:sequence>
        <s:element name="Query" type="core:CamlQueryRoot" minOccurs="0" maxOccurs="1"/>
      </s:sequence>
    </s:complexType>
  </s:element>
  <s:element minOccurs="0" maxOccurs="1" name="viewFields">
    <s:complexType>
      <s:sequence>
        <s:element name="ViewFields" minOccurs="0" maxOccurs="1">
          <s:complexType>
            <s:sequence>
              <s:element name="FieldRef" type="core:FieldRefDefinitionView" minOccurs="0"
maxOccurs="unbounded" />
            </s:sequence>
          </s:complexType>
        </s:element>
      </s:sequence>
    </s:complexType>
  </s:element>
  <s:element minOccurs="0" maxOccurs="1" name="aggregations">
    <s:complexType>
      <s:sequence>
        <s:element name="Aggregations" type="core:AggregationsDefinition" minOccurs="0"
maxOccurs="1"/>
      </s:sequence>
    </s:complexType>
  </s:element>
  <s:element minOccurs="0" maxOccurs="1" name="formats">
    <s:complexType>
      <s:sequence>
        <s:element name="Formats" type="core:ViewFormatDefinitions" minOccurs="0"
maxOccurs="1"/>
      </s:sequence>
    </s:complexType>
  </s:element>
  <s:element minOccurs="0" maxOccurs="1" name="rowLimit">
    <s:complexType>
      <s:sequence>
        <s:element name="RowLimit" type="core:RowLimitDefinition" minOccurs="0" maxOccurs="1"/>
      </s:sequence>
    </s:complexType>
  </s:element>
</s:sequence>
</s:complexType>
</s:element>
<s:element name="UpdateViewHtmlResponse">
  <s:complexType>
    <s:sequence>
      <s:element name="UpdateViewHtmlResult" minOccurs="1" maxOccurs="1">
        <s:complexType>
          <s:sequence>

```

```

        <s:element name="View" type="core:ViewDefinition" minOccurs="1" maxOccurs="1"/>
      </s:sequence>
    </s:complexType>
  </s:element>
</s:sequence>
</s:complexType>
</s:element>
<s:element name="UpdateViewHtml2">
  <s:complexType>
    <s:sequence>
      <s:element minOccurs="1" maxOccurs="1" name="listName" type="s:string" />
      <s:element minOccurs="0" maxOccurs="1" name="viewName" type="s:string" />
      <s:element minOccurs="0" maxOccurs="1" name="viewProperties">
        <s:complexType>
          <s:sequence>
            <s:element name="View" type="tns:UpdateViewPropertiesDefinition" minOccurs="0"
maxOccurs="1"/>
          </s:sequence>
        </s:complexType>
      </s:element>
      <s:element minOccurs="0" maxOccurs="1" name="toolbar">
        <s:complexType>
          <s:sequence>
            <s:element name="Toolbar" type="core:ToolbarDefinition" minOccurs="0" maxOccurs="1" />
          </s:sequence>
        </s:complexType>
      </s:element>
      <s:element minOccurs="0" maxOccurs="1" name="viewHeader">
        <s:complexType>
          <s:sequence>
            <s:element name="ViewHeader" minOccurs="0" maxOccurs="1">
              <s:complexType>
                <s:sequence>
                  <s:any minOccurs="0" maxOccurs="unbounded" namespace="##any"
processContents="skip" />
                </s:sequence>
                <s:anyAttribute processContents="skip" />
              </s:complexType>
            </s:element>
          </s:sequence>
        </s:complexType>
      </s:element>
      <s:element minOccurs="0" maxOccurs="1" name="viewBody">
        <s:complexType>
          <s:sequence>
            <s:element name="ViewBody" minOccurs="0" maxOccurs="1">
              <s:complexType>
                <s:sequence>
                  <s:any minOccurs="0" maxOccurs="unbounded" namespace="##any"
processContents="skip" />
                </s:sequence>
                <s:anyAttribute processContents="skip" />
              </s:complexType>
            </s:element>
          </s:sequence>
        </s:complexType>
      </s:element>
      <s:element minOccurs="0" maxOccurs="1" name="viewFooter">
        <s:complexType>

```

```

    <s:sequence>
      <s:element name="ViewFooter" minOccurs="0" maxOccurs="1">
        <s:complexType>
          <s:sequence>
            <s:any minOccurs="0" maxOccurs="unbounded" namespace="##any"
processContents="skip" />
          </s:sequence>
          <s:anyAttribute processContents="skip" />
        </s:complexType>
      </s:element>
    </s:sequence>
  </s:complexType>
</s:element>
<s:element minOccurs="0" maxOccurs="1" name="viewEmpty">
  <s:complexType>
    <s:sequence>
      <s:element name="ViewEmpty" minOccurs="0" maxOccurs="1">
        <s:complexType>
          <s:sequence>
            <s:any minOccurs="0" maxOccurs="unbounded" namespace="##any"
processContents="skip" />
          </s:sequence>
          <s:anyAttribute processContents="skip" />
        </s:complexType>
      </s:element>
    </s:sequence>
  </s:complexType>
</s:element>
<s:element minOccurs="0" maxOccurs="1" name="rowLimitExceeded">
  <s:complexType>
    <s:sequence>
      <s:element name="RowLimitExceeded" minOccurs="0" maxOccurs="1">
        <s:complexType>
          <s:sequence>
            <s:any minOccurs="0" maxOccurs="unbounded" namespace="##any"
processContents="skip" />
          </s:sequence>
          <s:anyAttribute processContents="skip" />
        </s:complexType>
      </s:element>
    </s:sequence>
  </s:complexType>
</s:element>
  <s:element minOccurs="0" maxOccurs="1" name="query">
    <s:complexType>
      <s:sequence>
        <s:element name="Query" type="core:CamlQueryRoot" minOccurs="0" maxOccurs="1"/>
      </s:sequence>
    </s:complexType>
  </s:element>
  <s:element minOccurs="0" maxOccurs="1" name="viewFields">
    <s:complexType>
      <s:sequence>
        <s:element name="ViewFields" minOccurs="0" maxOccurs="1">
          <s:complexType>
            <s:sequence>
              <s:element name="FieldRef" type="core:FieldRefDefinitionView"
minOccurs="0" maxOccurs="unbounded" />
            </s:sequence>
          </s:complexType>
        </s:element>
      </s:sequence>
    </s:complexType>
  </s:element>

```

```

        </s:element>
    </s:sequence>
</s:complexType>
</s:element>
    <s:element minOccurs="0" maxOccurs="1" name="aggregations">
    <s:complexType>
    <s:sequence>
    <s:element name="Aggregations" type="core:AggregationsDefinition" minOccurs="0"
maxOccurs="1"/>
    </s:sequence>
    </s:complexType>
</s:element>
    <s:element minOccurs="0" maxOccurs="1" name="formats">
    <s:complexType>
    <s:sequence>
    <s:element name="Formats" type="core:ViewFormatDefinitions" minOccurs="0"
maxOccurs="1"/>
    </s:sequence>
    </s:complexType>
</s:element>
    <s:element minOccurs="0" maxOccurs="1" name="rowLimit">
    <s:complexType>
    <s:sequence>
    <s:element name="RowLimit" type="core:RowLimitDefinition" minOccurs="0" maxOccurs="1"/>
    </s:sequence>
    </s:complexType>
</s:element>
    <s:element minOccurs="0" maxOccurs="1" name="openApplicationExtension"
type="s:string" />
    </s:sequence>
    </s:complexType>
</s:element>
<s:element name="UpdateViewHtml2Response">
    <s:complexType>
    <s:sequence>
    <s:element name="UpdateViewHtml2Result" minOccurs="1" maxOccurs="1">
    <s:complexType>
    <s:sequence>
    <s:element name="View" type="core:ViewDefinition" minOccurs="1" maxOccurs="1"/>
    </s:sequence>
    </s:complexType>
    </s:element>
    </s:sequence>
    </s:complexType>
</s:element>
<s:complexType name="BriefViewDefinition">
    <s:sequence>
    <s:element name="Query" type="core:CamlQueryRoot" minOccurs="1" maxOccurs="1" />
    <s:element name="ViewFields" minOccurs="1" maxOccurs="1">
    <s:complexType>
    <s:sequence>
    <s:element name="FieldRef" type="core:FieldRefDefinitionView" minOccurs="0"
maxOccurs="unbounded" />
    </s:sequence>
    </s:complexType>
    </s:element>
    <s:element name="ViewData" minOccurs="0" maxOccurs="1">
    <s:complexType>
    <s:sequence>

```



```

        <s:element name="FieldRef" type="core:FieldRefDefinitionViewData" minOccurs="3"
maxOccurs="5" />
    </s:sequence>
</s:complexType>
</s:element>
    <s:element name="CalendarViewStyles" type="core:CalendarViewStylesDefinition"
minOccurs="0" maxOccurs="1" />
    <s:element name="RowLimit" type="core:RowLimitDefinition" minOccurs="0" maxOccurs="1" />
    <s:element name="Formats" type="core:ViewFormatDefinitions" minOccurs="0" maxOccurs="1"
/>
    <s:element name="Aggregations" type="core:AggregationsDefinition" minOccurs="0"
maxOccurs="1" form="unqualified" />
    <s:element name="ViewStyle" type="core:ViewStyleReference" minOccurs="0" maxOccurs="1" />
    <s:element name="OpenApplicationExtension" type="s:string" minOccurs="0" maxOccurs="1"
/>
</s:sequence>
<s:attributeGroup ref="tns:ViewAttributeGroup"/>
</s:complexType>
<s:complexType name="UpdateViewPropertiesDefinition">
    <s:attributeGroup ref="tns:UpdateViewAttributeGroup"/>
</s:complexType>
<s:attributeGroup name="ViewAttributeGroup">
    <s:attribute name="AggregateView" type="core:TRUEFALSE" default="FALSE"/>
    <s:attribute name="BaseViewID" type="s:int" />
    <s:attribute name="DefaultView" type="core:TRUEFALSE" default="FALSE" />
    <s:attribute name="DisplayName" type="s:string" use="required"/>
    <s:attribute name="FailIfEmpty" type="core:TRUEFALSE" default="FALSE" />
    <s:attribute name="FileDialog" type="core:TRUEFALSE" default="FALSE" />
    <s:attribute name="FPModified" type="core:TRUEFALSE" default="FALSE" />
    <s:attribute name="Hidden" type="core:TRUEFALSE" default="FALSE" />
    <s:attribute name="List" type="core:UniqueIdentifierWithoutBraces" />
    <s:attribute name="Name" type="s:string" use="required"/>
    <s:attribute name="ContentTypeID" type="core:ContentTypeId" />
    <s:attribute name="OrderedView" type="core:TRUEFALSE" />
    <s:attribute name="DefaultViewForContentType" type="core:TRUEFALSE" default="FALSE" />
    <s:attribute name="IncludeRootFolder" type="core:TRUEFALSE" default="FALSE" />
    <s:attribute name="PageType" type="s:string" />
    <s:attribute name="Path" type="core:RelativeFilePath" />
    <s:attribute name="Personal" type="core:TRUEFALSE" default="FALSE" />
    <s:attribute name="ReadOnly" type="core:TRUEFALSE" default="FALSE" />
    <s:attribute name="RecurrenceRowset" type="core:TRUEFALSE" default="FALSE" />
    <s:attribute name="RequiresClientIntegration" type="core:TRUEFALSE" default="FALSE"/>
    <s:attribute name="RowLimit" type="s:int" />
    <s:attribute name="ShowHeaderUI" type="core:TRUEFALSE" default="FALSE" />
    <s:attribute name="Type" type="core:ViewType" default="HTML"/>
    <s:attribute name="Url" type="s:string" use="required"/>
    <s:attribute name="WebPartOrder" type="s:int" />
    <s:attribute name="WebPartZoneID" type="s:string" />
    <s:attribute name="FreeForm" type="core:TRUEFALSE" />
    <s:attribute name="ImageUrl" type="s:string" />
    <s:attribute name="SetupPath" type="core:RelativeFilePath" />
    <s:attribute name="ToolBarTemplate" type="s:string" />
    <s:attribute name="MobileView" type="core:TRUEFALSE" default="FALSE"/>
    <s:attribute name="MobileDefaultView" type="core:TRUEFALSE" />
    <s:attribute name="Level" type="s:int" default="1" />
    <s:attribute name="FrameState" type="s:string" default="Normal" />
    <s:attribute name="IsIncluded" type="core:TRUEFALSE" default="TRUE" />
    <s:attribute name="IncludeVersions" type="core:TRUEFALSE" default="FALSE" />
    <s:attribute name="HackLockWeb" type="core:TRUEFALSE" default="FALSE" />

```

```

    <s:attribute name="ModerationType" type="core:ViewModerationType" default="" />
    <s:attribute name="Scope" type="core:ViewScope" default="" />
    <s:attribute name="Threaded" type="core:TRUEFALSE" default="FALSE" />
</s:attributeGroup>
<s:attributeGroup name="UpdateViewAttributeGroup">
    <s:attribute name="DefaultView" type="core:TRUEFALSE" default="FALSE" />
    <s:attribute name="DisplayName" type="s:string" />
    <s:attribute name="FPModified" type="core:TRUEFALSE" default="FALSE" />
    <s:attribute name="Scope" type="core:ViewScope" default="" />
</s:attributeGroup>
</s:schema>
</wsdl:types>
<wsdl:message name="GetViewSoapIn">
    <wsdl:part name="parameters" element="tns:GetView" />
</wsdl:message>
<wsdl:message name="GetViewSoapOut">
    <wsdl:part name="parameters" element="tns:GetViewResponse" />
</wsdl:message>
<wsdl:message name="GetViewHtmlSoapIn">
    <wsdl:part name="parameters" element="tns:GetViewHtml" />
</wsdl:message>
<wsdl:message name="GetViewHtmlSoapOut">
    <wsdl:part name="parameters" element="tns:GetViewHtmlResponse" />
</wsdl:message>
<wsdl:message name="DeleteViewSoapIn">
    <wsdl:part name="parameters" element="tns>DeleteView" />
</wsdl:message>
<wsdl:message name="DeleteViewSoapOut">
    <wsdl:part name="parameters" element="tns>DeleteViewResponse" />
</wsdl:message>
<wsdl:message name="AddViewSoapIn">
    <wsdl:part name="parameters" element="tns:AddView" />
</wsdl:message>
<wsdl:message name="AddViewSoapOut">
    <wsdl:part name="parameters" element="tns:AddViewResponse" />
</wsdl:message>
<wsdl:message name="GetViewCollectionSoapIn">
    <wsdl:part name="parameters" element="tns:GetViewCollection" />
</wsdl:message>
<wsdl:message name="GetViewCollectionSoapOut">
    <wsdl:part name="parameters" element="tns:GetViewCollectionResponse" />
</wsdl:message>
<wsdl:message name="UpdateViewSoapIn">
    <wsdl:part name="parameters" element="tns:UpdateView" />
</wsdl:message>
<wsdl:message name="UpdateViewSoapOut">
    <wsdl:part name="parameters" element="tns:UpdateViewResponse" />
</wsdl:message>
<wsdl:message name="UpdateViewHtmlSoapIn">
    <wsdl:part name="parameters" element="tns:UpdateViewHtml" />
</wsdl:message>
<wsdl:message name="UpdateViewHtmlSoapOut">
    <wsdl:part name="parameters" element="tns:UpdateViewHtmlResponse" />
</wsdl:message>
<wsdl:message name="UpdateViewHtml2SoapIn">
    <wsdl:part name="parameters" element="tns:UpdateViewHtml2" />
</wsdl:message>
<wsdl:message name="UpdateViewHtml2SoapOut">
    <wsdl:part name="parameters" element="tns:UpdateViewHtml2Response" />

```

```

</wsdl:message>
<wsdl:portType name="ViewsSoap">
  <wsdl:operation name="GetView">
    <wsdl:input message="tns:GetViewSoapIn" />
    <wsdl:output message="tns:GetViewSoapOut" />
  </wsdl:operation>
  <wsdl:operation name="GetViewHtml">
    <wsdl:input message="tns:GetViewHtmlSoapIn" />
    <wsdl:output message="tns:GetViewHtmlSoapOut" />
  </wsdl:operation>
  <wsdl:operation name="DeleteView">
    <wsdl:input message="tns>DeleteViewSoapIn" />
    <wsdl:output message="tns>DeleteViewSoapOut" />
  </wsdl:operation>
  <wsdl:operation name="AddView">
    <wsdl:input message="tns:AddViewSoapIn" />
    <wsdl:output message="tns:AddViewSoapOut" />
  </wsdl:operation>
  <wsdl:operation name="GetViewCollection">
    <wsdl:input message="tns:GetViewCollectionSoapIn" />
    <wsdl:output message="tns:GetViewCollectionSoapOut" />
  </wsdl:operation>
  <wsdl:operation name="UpdateView">
    <wsdl:input message="tns:UpdateViewSoapIn" />
    <wsdl:output message="tns:UpdateViewSoapOut" />
  </wsdl:operation>
  <wsdl:operation name="UpdateViewHtml">
    <wsdl:input message="tns:UpdateViewHtmlSoapIn" />
    <wsdl:output message="tns:UpdateViewHtmlSoapOut" />
  </wsdl:operation>
  <wsdl:operation name="UpdateViewHtml2">
    <wsdl:input message="tns:UpdateViewHtml2SoapIn" />
    <wsdl:output message="tns:UpdateViewHtml2SoapOut" />
  </wsdl:operation>
</wsdl:portType>
<wsdl:binding name="ViewsSoap" type="tns:ViewsSoap">
  <soap:binding transport="http://schemas.xmlsoap.org/soap/http" />
  <wsdl:operation name="GetView">
    <soap:operation soapAction="http://schemas.microsoft.com/sharepoint/soap/GetView"
style="document" />
    <wsdl:input>
      <soap:body use="literal" />
    </wsdl:input>
    <wsdl:output>
      <soap:body use="literal" />
    </wsdl:output>
  </wsdl:operation>
  <wsdl:operation name="GetViewHtml">
    <soap:operation soapAction="http://schemas.microsoft.com/sharepoint/soap/GetViewHtml"
style="document" />
    <wsdl:input>
      <soap:body use="literal" />
    </wsdl:input>
    <wsdl:output>
      <soap:body use="literal" />
    </wsdl:output>
  </wsdl:operation>
  <wsdl:operation name="DeleteView">

```

```

        <soap:operation soapAction="http://schemas.microsoft.com/sharepoint/soap/DeleteView"
style="document" />
        <wsdl:input>
            <soap:body use="literal" />
        </wsdl:input>
        <wsdl:output>
            <soap:body use="literal" />
        </wsdl:output>
    </wsdl:operation>
    <wsdl:operation name="AddView">
        <soap:operation soapAction="http://schemas.microsoft.com/sharepoint/soap/AddView"
style="document" />
        <wsdl:input>
            <soap:body use="literal" />
        </wsdl:input>
        <wsdl:output>
            <soap:body use="literal" />
        </wsdl:output>
    </wsdl:operation>
    <wsdl:operation name="GetViewCollection">
        <soap:operation
soapAction="http://schemas.microsoft.com/sharepoint/soap/GetViewCollection" style="document"
/>
        <wsdl:input>
            <soap:body use="literal" />
        </wsdl:input>
        <wsdl:output>
            <soap:body use="literal" />
        </wsdl:output>
    </wsdl:operation>
    <wsdl:operation name="UpdateView">
        <soap:operation soapAction="http://schemas.microsoft.com/sharepoint/soap/UpdateView"
style="document" />
        <wsdl:input>
            <soap:body use="literal" />
        </wsdl:input>
        <wsdl:output>
            <soap:body use="literal" />
        </wsdl:output>
    </wsdl:operation>
    <wsdl:operation name="UpdateViewHtml">
        <soap:operation
soapAction="http://schemas.microsoft.com/sharepoint/soap/UpdateViewHtml" style="document" />
        <wsdl:input>
            <soap:body use="literal" />
        </wsdl:input>
        <wsdl:output>
            <soap:body use="literal" />
        </wsdl:output>
    </wsdl:operation>
    <wsdl:operation name="UpdateViewHtml2">
        <soap:operation
soapAction="http://schemas.microsoft.com/sharepoint/soap/UpdateViewHtml2" style="document" />
        <wsdl:input>
            <soap:body use="literal" />
        </wsdl:input>
        <wsdl:output>
            <soap:body use="literal" />
        </wsdl:output>
    </wsdl:operation>

```

```

    </wsdl:operation>
  </wsdl:binding>
  <wsdl:binding name="ViewsSoap12" type="tns:ViewsSoap">
    <soap12:binding transport="http://schemas.xmlsoap.org/soap/http" />
    <wsdl:operation name="GetView">
      <soap12:operation soapAction="http://schemas.microsoft.com/sharepoint/soap/GetView"
style="document" />
      <wsdl:input>
        <soap12:body use="literal" />
      </wsdl:input>
      <wsdl:output>
        <soap12:body use="literal" />
      </wsdl:output>
    </wsdl:operation>
    <wsdl:operation name="GetViewHtml">
      <soap12:operation soapAction="http://schemas.microsoft.com/sharepoint/soap/GetViewHtml"
style="document" />
      <wsdl:input>
        <soap12:body use="literal" />
      </wsdl:input>
      <wsdl:output>
        <soap12:body use="literal" />
      </wsdl:output>
    </wsdl:operation>
    <wsdl:operation name="DeleteView">
      <soap12:operation soapAction="http://schemas.microsoft.com/sharepoint/soap/DeleteView"
style="document" />
      <wsdl:input>
        <soap12:body use="literal" />
      </wsdl:input>
      <wsdl:output>
        <soap12:body use="literal" />
      </wsdl:output>
    </wsdl:operation>
    <wsdl:operation name="AddView">
      <soap12:operation soapAction="http://schemas.microsoft.com/sharepoint/soap/AddView"
style="document" />
      <wsdl:input>
        <soap12:body use="literal" />
      </wsdl:input>
      <wsdl:output>
        <soap12:body use="literal" />
      </wsdl:output>
    </wsdl:operation>
    <wsdl:operation name="GetViewCollection">
      <soap12:operation
soapAction="http://schemas.microsoft.com/sharepoint/soap/GetViewCollection" style="document"
/>
      <wsdl:input>
        <soap12:body use="literal" />
      </wsdl:input>
      <wsdl:output>
        <soap12:body use="literal" />
      </wsdl:output>
    </wsdl:operation>
    <wsdl:operation name="UpdateView">
      <soap12:operation soapAction="http://schemas.microsoft.com/sharepoint/soap/UpdateView"
style="document" />
      <wsdl:input>

```

```

        <soap12:body use="literal" />
    </wsdl:input>
    <wsdl:output>
        <soap12:body use="literal" />
    </wsdl:output>
</wsdl:operation>
<wsdl:operation name="UpdateViewHtml">
    <soap12:operation
soapAction="http://schemas.microsoft.com/sharepoint/soap/UpdateViewHtml" style="document" />
    <wsdl:input>
        <soap12:body use="literal" />
    </wsdl:input>
    <wsdl:output>
        <soap12:body use="literal" />
    </wsdl:output>
</wsdl:operation>
<wsdl:operation name="UpdateViewHtml2">
    <soap12:operation
soapAction="http://schemas.microsoft.com/sharepoint/soap/UpdateViewHtml2" style="document" />
    <wsdl:input>
        <soap12:body use="literal" />
    </wsdl:input>
    <wsdl:output>
        <soap12:body use="literal" />
    </wsdl:output>
</wsdl:operation>
</wsdl:binding>
<wsdl:service name="Views">
    <wsdl:port name="ViewsSoap" binding="tns:ViewsSoap">
        <soap:address location="http://office/_vti_bin/Views.asmx" />
    </wsdl:port>
    <wsdl:port name="ViewsSoap12" binding="tns:ViewsSoap12">
        <soap12:address location="http://office/_vti_bin/Views.asmx" />
    </wsdl:port>
</wsdl:service>
</wsdl:definitions>

```

7 Appendix B: Product Behavior

The information in this specification is applicable to the following Microsoft products or supplemental software. References to product versions include released service packs:

- The 2007 Microsoft® Office system
- Microsoft® Office 2010 suites
- Windows® SharePoint® Services 2.0
- Windows® SharePoint® Services 3.0
- Microsoft® SharePoint® Foundation 2010

Exceptions, if any, are noted below. If a service pack or Quick Fix Engineering (QFE) number appears with the product version, behavior changed in that service pack or QFE. The new behavior also applies to subsequent service packs of the product unless otherwise specified. If a product edition appears with the product version, behavior is different in that product edition.

Unless otherwise specified, any statement of optional behavior in this specification that is prescribed using the terms SHOULD or SHOULD NOT implies product behavior in accordance with the SHOULD or SHOULD NOT prescription. Unless otherwise specified, the term MAY implies that the product does not follow the prescription.

[<1> Section 3.1.4.8:](#) Windows SharePoint Services 2.0 does not support this operation.

8 Change Tracking

No table of changes is available. The document is either new or has had no changes since its last release.

9 Index

A

Abstract data model
 [server](#) 17
[aggregations element](#) 11
[Applicability](#) 9
[Attribute groups](#) 16
 [UpdateViewAttributeGroup](#) 16
 [ViewAttributeGroup](#) 16
[Attributes](#) 16

B

[BriefViewDefinition complex type](#) 14

C

[Capability negotiation](#) 9
[Change tracking](#) 56
Client
 [overview](#) 17
[Complex types](#) 13
 [BriefViewDefinition](#) 14
 [SOAPFaultDetails](#) 15
 [UpdateViewPropertiesDefinition](#) 15

D

Data model - abstract
 [server](#) 17

E

Elements
 [aggregations](#) 11
 [formats](#) 11
 [listName](#) 12
 [query](#) 12
 [rowLimit](#) 12
 [viewFields](#) 12
 [viewName](#) 13
 [viewProperties](#) 13
Events
 [local - server](#) 35
 [timer - server](#) 35
Examples
 [overview](#) 36

F

[Fields - vendor-extensible](#) 9
[formats element](#) 11
[Full WSDL](#) 40

G

[Glossary](#) 6
[Groups](#) 16

I

[Implementer - security considerations](#) 39
[Index of security parameters](#) 39
[Informative references](#) 7
Initialization
 [server](#) 17
[Introduction](#) 6

L

[listName element](#) 12
Local events
 [server](#) 35
[LocalizedString simple type](#) 15

M

Message processing
 [server](#) 17
Messages
 [aggregations element](#) 11
 [attribute groups](#) 16
 [attributes](#) 16
 [BriefViewDefinition complex type](#) 14
 [complex types](#) 13
 [elements](#) 10
 [enumerated](#) 10
 [formats element](#) 11
 [groups](#) 16
 [listName element](#) 12
 [LocalizedString simple type](#) 15
 [namespaces](#) 10
 [query element](#) 12
 [rowLimit element](#) 12
 [simple types](#) 15
 [SOAPFaultDetails complex type](#) 15
 [syntax](#) 10
 [transport](#) 10
 [UpdateViewAttributeGroup attribute group](#) 16
 [UpdateViewPropertiesDefinition complex type](#) 15
 [ViewAttributeGroup attribute group](#) 16
 [viewFields element](#) 12
 [viewName element](#) 13
 [viewProperties element](#) 13

N

[Namespaces](#) 10
[Normative references](#) 6

O

Operations
 [AddView](#) 18
 [DeleteView](#) 20
 [GetView](#) 22
 [GetViewCollection](#) 23

[GetViewHtml](#) 25
[UpdateView](#) 27
[UpdateViewHtml](#) 28
[UpdateViewHtml2](#) 30
[Overview \(synopsis\)](#) 7

P

[Parameters - security index](#) 39
[Preconditions](#) 8
[Prerequisites](#) 8
[Product behavior](#) 55

Q

[query element](#) 12

R

References
[informative](#) 7
[normative](#) 6
[Relationship to other protocols](#) 8
[rowLimit element](#) 12

S

Security
[implementer considerations](#) 39
[parameter index](#) 39
Sequencing rules
[server](#) 17
Server
[abstract data model](#) 17
[AddView operation](#) 18
[DeleteView operation](#) 20
[GetView operation](#) 22
[GetViewCollection operation](#) 23
[GetViewHtml operation](#) 25
[initialization](#) 17
[local events](#) 35
[message processing](#) 17
[overview](#) 17
[sequencing rules](#) 17
[timer events](#) 35
[timers](#) 17
[UpdateView operation](#) 27
[UpdateViewHtml operation](#) 28
[UpdateViewHtml2 operation](#) 30
[Simple types](#) 15
[LocalizableString](#) 15
[SOAPFaultDetails complex type](#) 15
[Standards assignments](#) 9
Syntax
[messages - overview](#) 10

T

Timer events
[server](#) 35
Timers
[server](#) 17

[Tracking changes](#) 56
[Transport](#) 10
Types
[complex](#) 13
[simple](#) 15

U

[UpdateViewAttributeGroup attribute group](#) 16
[UpdateViewPropertiesDefinition complex type](#) 15

V

[Vendor-extensible fields](#) 9
[Versioning](#) 9
[ViewAttributeGroup attribute group](#) 16
[viewFields element](#) 12
[viewName element](#) 13
[viewProperties element](#) 13

W

[WSDL](#) 40