

# [MS-GPNAP]: Group Policy: Network Access Protection (NAP) Extension

---

## Intellectual Property Rights Notice for Open Specifications Documentation

- **Technical Documentation.** Microsoft publishes Open Specifications documentation for protocols, file formats, languages, standards as well as overviews of the interaction among each of these technologies.
- **Copyrights.** This documentation is covered by Microsoft copyrights. Regardless of any other terms that are contained in the terms of use for the Microsoft website that hosts this documentation, you may make copies of it in order to develop implementations of the technologies described in the Open Specifications and may distribute portions of it in your implementations using these technologies or your documentation as necessary to properly document the implementation. You may also distribute in your implementation, with or without modification, any schema, IDL's, or code samples that are included in the documentation. This permission also applies to any documents that are referenced in the Open Specifications.
- **No Trade Secrets.** Microsoft does not claim any trade secret rights in this documentation.
- **Patents.** Microsoft has patents that may cover your implementations of the technologies described in the Open Specifications. Neither this notice nor Microsoft's delivery of the documentation grants any licenses under those or any other Microsoft patents. However, a given Open Specification may be covered by Microsoft's Open Specification Promise (available here: <http://www.microsoft.com/interop/osp>) or the Community Promise (available here: <http://www.microsoft.com/interop/cp/default.mspx>). If you would prefer a written license, or if the technologies described in the Open Specifications are not covered by the Open Specifications Promise or Community Promise, as applicable, patent licenses are available by contacting [iplg@microsoft.com](mailto:iplg@microsoft.com).
- **Trademarks.** The names of companies and products contained in this documentation may be covered by trademarks or similar intellectual property rights. This notice does not grant any licenses under those rights.
- **Fictitious Names.** The example companies, organizations, products, domain names, e-mail addresses, logos, people, places, and events depicted in this documentation are fictitious. No association with any real company, organization, product, domain name, email address, logo, person, place, or event is intended or should be inferred.

**Reservation of Rights.** All other rights are reserved, and this notice does not grant any rights other than specifically described above, whether by implication, estoppel, or otherwise.

**Tools.** The Open Specifications do not require the use of Microsoft programming tools or programming environments in order for you to develop an implementation. If you have access to Microsoft programming tools and environments you are free to take advantage of them. Certain Open Specifications are intended for use in conjunction with publicly available standard specifications and network programming art, and assumes that the reader either is familiar with the aforementioned material or has immediate access to it.

## Revision Summary

Date	Revision History	Revision Class	Comments
04/23/2010	0.1	Major	First Release.
06/04/2010	1.0	Major	Updated and revised the technical content.
07/16/2010	1.1	Minor	Clarified the meaning of the technical content.
08/27/2010	1.1	No change	No changes to the meaning, language, or formatting of the technical content.
10/08/2010	1.1	No change	No changes to the meaning, language, or formatting of the technical content.
11/19/2010	1.1	No change	No changes to the meaning, language, or formatting of the technical content.
01/07/2011	1.1	No change	No changes to the meaning, language, or formatting of the technical content.
02/11/2011	1.1	No change	No changes to the meaning, language, or formatting of the technical content.

# Contents

<b>1 Introduction</b>	<b>5</b>
1.1 Glossary	5
1.2 References	5
1.2.1 Normative References	5
1.2.2 Informative References	6
1.3 Overview	7
1.3.1 Background	7
1.3.2 Group Policy Extension Overview	8
1.4 Relationship to Protocols and Other Structures	8
1.5 Applicability Statement	9
1.6 Versioning and Localization	9
1.7 Vendor-Extensible Fields	9
<b>2 Structures</b>	<b>10</b>
2.1 Trace Settings	10
2.1.1 Enable Tracing	10
2.1.2 Tracing Level	11
2.2 User Interface Settings	11
2.2.1 SmallText	11
2.2.2 LargeText	11
2.2.3 ImageFile	12
2.2.4 ImageFileName	12
2.3 Enforcement Client Settings	12
2.3.1 DHCP Enforcement	13
2.3.2 Remote Access Enforcement	14
2.3.3 IPsec Enforcement	14
2.3.4 Wireless EAPOL Enforcement	15
2.3.5 RDG Enforcement	15
2.3.6 EAP Enforcement	15
2.4 Health Registration Authority (HRA) Settings	15
2.4.1 PKCS#10 Certificate Settings	16
2.4.1.1 Cryptographic Service Provider (CSP)	17
2.4.1.2 Cryptographic Provider Type	18
2.4.1.3 Public Key OID	18
2.4.1.4 Public Key Length	19
2.4.1.5 Public Key Spec	20
2.4.1.6 Hash Algorithm OID	20
2.4.2 HRA Auto-Discovery	21
2.4.3 Use SSL	22
2.4.4 HRA URLs	22
2.4.4.1 Server	23
2.4.4.2 Order	23
2.4.5 Reconnect Attempts	23
2.5 SoH Settings	23
2.5.1 Task Timer	24
2.5.2 Backward Compatible	24
<b>3 Structure Examples</b>	<b>25</b>
<b>4 Security</b>	<b>27</b>

4.1 Security Considerations for Implementers .....	27
4.2 Index of Security Fields .....	27
<b>5 Appendix A: Product Behavior .....</b>	<b>28</b>
<b>6 Change Tracking.....</b>	<b>30</b>
<b>7 Index .....</b>	<b>31</b>

# 1 Introduction

The Group Policy: Network Access Protection (NAP) Extension protocol specifies functionality to control client computer access to network resources. Access can be granted or restricted per client computer based on its identity and its degree of compliance with corporate governance policy. For non-compliant client computers, NAP specifies automatic methods to reinstate compliance and to dynamically upgrade access to network resources.

## 1.1 Glossary

The following terms are defined in [\[MS-GLOS\]](#):

**certificate authority (CA) or certification authority**  
**client-side extension GUID (CSE GUID)**  
**domain**  
**domain controller (DC)**  
**enforcement client**  
**globally unique identifier (GUID)**  
**health certificate enrollment agent (HCEA)**  
**health registration authority (HRA)**  
**language code identifier (LCID)**  
**Lightweight Directory Access Protocol (LDAP)**  
**registry**  
**tool extension GUID or administrative plug-in GUID**  
**Unicode**

The following terms are defined in [\[MS-GPOL\]](#):

**Group Policy (GP) server**

The following terms are defined in [\[MS-SOH\]](#):

**Health Certificate Enrollment Protocol (HCEP)**  
**system health agent (SHA)**

The following terms are specific to this document:

**MAY, SHOULD, MUST, SHOULD NOT, MUST NOT:** These terms (in all caps) are used as described in [\[RFC2119\]](#). All statements of optional behavior use either MAY, SHOULD, or SHOULD NOT.

## 1.2 References

### 1.2.1 Normative References

We conduct frequent surveys of the normative references to assure their continued availability. If you have any issue with finding a normative reference, please contact [dochelp@microsoft.com](mailto:dochelp@microsoft.com). We will assist you in finding the relevant information. Please check the archive site, <http://msdn2.microsoft.com/en-us/library/E4BD6494-06AD-4aed-9823-445E921C9624>, as an additional source.

[MS-DHCPN] Microsoft Corporation, "[Dynamic Host Configuration Protocol \(DHCP\) Extensions for Network Access Protection \(NAP\)](#)", March 2007.

- [MS-DTYP] Microsoft Corporation, "[Windows Data Types](#)", January 2007.
- [MS-GPOL] Microsoft Corporation, "[Group Policy: Core Protocol Specification](#)", June 2007.
- [MS-GPREG] Microsoft Corporation, "[Group Policy: Registry Extension Encoding](#)", August 2007.
- [MS-HCEP] Microsoft Corporation, "[Health Certificate Enrollment Protocol Specification](#)", January 2007.
- [MS-LCID] Microsoft Corporation, "[Windows Language Code Identifier \(LCID\) Reference](#)", July 2007.
- [MS-NAPSO] Microsoft Corporation, "[Network Policy and Access Services System Overview](#)", August 2009.
- [MS-PEAP] Microsoft Corporation, "[Protected Extensible Authentication Protocol \(PEAP\) Specification](#)", January 2007.
- [MS-SOH] Microsoft Corporation, "[Statement of Health for Network Access Protection \(NAP\) Protocol Specification](#)", January 2007.
- [MS-TSGU] Microsoft Corporation, "[Terminal Services Gateway Server Protocol Specification](#)", June 2007.
- [MS-WSH] Microsoft Corporation, "[Windows Security Health Agent \(WSHA\) and Windows Security Health Validator \(WSHV\) Protocol Specification](#)", July 2007.
- [RFC2119] Bradner, S., "Key words for use in RFCs to Indicate Requirement Levels", BCP 14, RFC 2119, March 1997, <http://www.ietf.org/rfc/rfc2119.txt>
- [RFC2616] Fielding, R., Gettys, J., Mogul, J., et al., "Hypertext Transfer Protocol -- HTTP/1.1", RFC 2616, June 1999, <http://www.ietf.org/rfc/rfc2616.txt>
- [RFC2818] Rescorla, E., "HTTP Over TLS", RFC 2818, May 2000, <http://www.ietf.org/rfc/rfc2818.txt>
- [RFC2986] Nystrom, M., and Kaliski, B., "PKCS#10: Certificate Request Syntax Specification", RFC 2986, November 2000, <http://www.ietf.org/rfc/rfc2986.txt>
- [RFC3174] Eastlake III, D., and Jones, P., "US Secure Hash Algorithm 1 (SHA1)", RFC 3174, September 2001, <http://www.ietf.org/rfc/rfc3174.txt>
- [RFC3447] Jonsson, J., and Kaliski, B., "Public-Key Cryptography Standards (PKCS) #1: RSA Cryptography Specifications Version 2.1", RFC 3447, February 2003, <http://www.ietf.org/rfc/rfc3447.txt>

### 1.2.2 Informative References

- [MS-GLOS] Microsoft Corporation, "[Windows Protocols Master Glossary](#)", March 2007.
- [MSDN-ALG] Microsoft Corporation, "CNG Algorithm Identifiers", [http://msdn.microsoft.com/en-us/library/aa375534\(VS.85\).aspx](http://msdn.microsoft.com/en-us/library/aa375534(VS.85).aspx)
- [MSDN-CSP] Microsoft Corporation, "Cryptographic Provider Names", <http://msdn.microsoft.com/en-us/library/aa380243.aspx>
- [MSDN-DHCP] Microsoft Corporation, "Dynamic Host Configuration Protocol", <http://technet.microsoft.com/en-us/network/bb643151.aspx>

[MSDN-NAP] Microsoft Corporation, "Network Access Protection", [http://msdn.microsoft.com/en-us/library/aa369712\(VS.85\).aspx](http://msdn.microsoft.com/en-us/library/aa369712(VS.85).aspx)

[MSDN-SC] Microsoft Corporation, "Smart Card Minidriver Specification", <http://www.microsoft.com/whdc/device/input/smartcard/sc-minidriver.msp>

[MSFT-IPSEC] Microsoft Corporation, "IPsec", <http://technet.microsoft.com/en-us/network/bb531150.aspx>

[MSFT-NAIPSEC] Microsoft Corporation, "IPsec Enforcement Configuration", [http://technet.microsoft.com/en-us/library/dd125312\(WS.10\).aspx](http://technet.microsoft.com/en-us/library/dd125312(WS.10).aspx)

[MSFT-RDG] Microsoft Corporation, "Configuring the TS Gateway NAP Scenario", [http://technet.microsoft.com/en-us/library/cc732172\(WS.10\).aspx](http://technet.microsoft.com/en-us/library/cc732172(WS.10).aspx).

## 1.3 Overview

Network Access Protection (NAP) is a platform that controls access to network resources, based on a client computer's identity and compliance with corporate governance policy. NAP allows network administrators to define granular levels of network access, based on who a client is, the groups to which the client belongs, and the degree to which that client is compliant with corporate governance policy. Based on the degree of compliance, NAP can implement different enforcement methods that can restrict or limit client access to the network. If a client is not compliant, NAP provides a mechanism to automatically bring the client back into compliance and then to dynamically increase its level of network access. The NAP architecture is specified in [\[MS-NAPSO\]](#).

The behavior of NAP can be controlled through Group Policy by updating the client **registry**, as specified in [\[MS-GPOL\]](#) and in [\[MS-GPREG\]](#). This mechanism can be used by an administrator to enable or disable NAP enforcement, to set **Health Registration Authorities (HRAs)** to be used by the client, and to control client user interface (UI) and tracing. All NAP group policies are machine-specific, meaning that the same policy is applied to all users on a given machine.

### 1.3.1 Background

The Group Policy: Core Protocol, as specified in [\[MS-GPOL\]](#), allows clients to discover and retrieve policy settings created by administrators of a **domain**. These settings are persisted within Group Policy objects (GPOs) assigned to policy target accounts, which are either computer accounts or user accounts in Active Directory. Each client uses the **Lightweight Directory Access Protocol (LDAP)** to determine which GPOs are applicable to it by consulting the Active Directory objects corresponding to its computer account and the user accounts of any users that log on to the client computer.

On each client, each GPO is interpreted and acted upon by software components known as client-side plug-ins. Each client-side plug-in is associated with a specific class of settings. The client-side plug-ins that are responsible for a given GPO are specified by using an attribute on the GPO. This attribute specifies a list of **GUID** pairs. The first GUID of each pair is referred to as a **client-side extension GUID (CSE GUID)**. The second GUID of each pair is referred to as a **tool extension GUID**.

For each GPO that is applicable to a client, the client consults the CSE GUIDs listed in the GPO to determine which client-side plug-ins on the client should handle the GPO. The client then invokes the client-side plug-ins to handle the GPO. Next, the client-side plug-in uses the contents of the GPO to retrieve and process settings specific to its class, in a manner specific to the plug-in.

### 1.3.2 Group Policy Extension Overview

NAP client configuration Group Policy settings are accessible from a GPO through the Group Policy: NAP GP Extension to the Group Policy: Core Protocol. The extension provides a mechanism for administrative tools to obtain metadata about registry-based settings.

The process of configuring and applying the NAP Group Policy settings consists of the following steps:

1. An administrator invokes a Group Policy administrative tool to administer a GPO through the Group Policy: Core Protocol using the Policy Administration Protocol, as specified in [\[MS-GPOL\]](#) section 2.2.8. Through this protocol, the presence of the tool extension GUID for computer policy settings for the Group Policy: NAP GP Extension is retrieved, which indicates that the GPO contains Policy Settings that should be administered through the Policy Administration portion of the Group Policy: NAP GP Extension.

The administrative tool invokes a plug-in specific to the Group Policy: NAP Extension so that the administrator can configure the NAP settings, which results in the storage and retrieval of metadata inside a GPO on a GP server. This metadata describes configuration settings to be applied to a generic settings database on a client that is affected by the GPO.

The administrator views the data and updates it as desired.

2. A client computer affected by that GPO is started (or is connected to the network, if this happens after the client starts), and the Group Policy: Core Protocol is invoked by the client to retrieve Policy Settings from the GP server. As part of this processing, the registry extension's CSE GUID (as specified in [\[MS-GPREG\]](#) section 1.9) is read from the GPO.

3. The presence of the registry extension's CSE GUID (as specified in [\[MS-GPREG\]](#) section 1.9) in the GPO instructs the client to invoke a registry extension plug-in component for policy application. This component parses the file of settings and saves them in the generic settings database (registry) on the local machine.

4. The NAP subsystem on the client recognizes that its configuration has been updated and takes the appropriate actions.

This document specifies the behavior of the administrative plug-in mentioned in step 1. The operation of the Group Policy: Core Protocol in step 2 is specified in [\[MS-GPOL\]](#) section 3.2. The process of retrieving the settings in step 3 is specified in [\[MS-GPREG\]](#) section 3.2. Step 4 is specific to a NAP client implementation.

### 1.4 Relationship to Protocols and Other Structures

The Group Policy: NAP GP Extension is invoked as an extension of the Group Policy: Core Protocol. The Group Policy: NAP GP Extension is initiated only as part of the Group Policy: Core Protocol. The invocation of this (and of all Group Policy protocol extensions) is specified in [\[MS-GPOL\]](#) section 3.1. Group Policy: NAP GP Extension explicitly depends on all the protocols upon which the Group Policy: Core Protocol depends.

Group Policy: NAP GP Extension also depends on the Group Policy: Registry Extension Encoding to retrieve settings from a GPO, and to populate settings in the client registry.

The generic settings database [<1>](#) on the local machine maintains the local configuration, which is used by the NAP in case the local machine does not participate in GP. [<2>](#)



## 1.5 Applicability Statement

The Group Policy: NAP GP Extension is applicable only within the Group Policy framework and is used to configure certain aspects of NAP behavior on such clients.

The Group Policy: NAP GP Extension has only an administrative-side extension and no client-side extension. This extension updates the generic settings database [<3>](#) and is documented here for informative purposes only.

## 1.6 Versioning and Localization

This document covers versioning issues in the following areas:

- Structure Versions: There is no versioning mechanism in the Group Policy: Network Access Protection (NAP) Extension. If new functionality is required that would be incompatible with the existing registry settings, a new Group Policy extension should be implemented.
- Localization: Localization-dependent registry content is specified in section [2.2](#).

The Group Policy: NAP client configuration contains registry keys with data that is used for display purposes; these keys can contain localization-dependent content.

## 1.7 Vendor-Extensible Fields

The Group Policy: NAP GP Extension does not define any vendor-extensible fields.

This structure defines tool extension GUID values, as specified in [\[MS-GPOL\]](#) section 1.8. The following assignment represents the GUID in string format.

Parameter	Value
Tool extension GUID (computer policy settings)	{A2A54893-AAF2-49A3-B3F5-CC43CEBCC27C}

## 2 Structures

This protocol references commonly used data types as defined in [\[MS-DTYP\]](#). The NAP Group Policy administrative plug-in uses the transport specified in [\[MS-GPOL\]](#) to read and modify settings in the central policy store. Information is retrieved from the policy store by the Group Policy: Registry Extension Encoding ([\[MS-GPREG\]](#) section 3.2), which writes the information to the client's registry.

The NAP Group Policy client configuration is implemented as a set of entries in the machine-specific Registry Policy file used by the Group Policy: Registry Extension Encoding. To support the NAP Group Policy option, the NAP administrative plug-in **MUST** be able to write and query the corresponding entry in the machine-specific Registry Policy file of the relevant GPO.

The following NAP Group Policy client configurations are defined:

- Trace settings.
- User Interface settings.
- Enforcement Client settings.
- Health registration authority (HRA) settings.
- SoH settings.

The following subsections specify the format of the corresponding entries in the machine-specific Registry Policy file. The intent of various settings is also described in the following sections; however, these settings are processed by the NAP subsystem in the client, and their descriptions here are only for informative purposes, not for normative purposes.

### 2.1 Trace Settings

The NAP client tracing functionality settings are compounded from two registry entries that are represented in the machine-specific Registry Policy file as follows:

Key: Software\Policies\Microsoft\NetworkAccessProtection\ClientConfig\

#### 2.1.1 Enable Tracing

Value: "Enable Tracing" or one of the value names specified in the table in [\[MS-GPREG\]](#) section 3.2.5.1 specifying how the value is deleted.

Type: REG\_DWORD.

Size: Equal to the size of the Data field.

Data: A 32-bit unsigned integer.

Value	Meaning
0x00000000	Disables NAP tracing on the client.
0x00000001	Enables NAP tracing on the client.

## 2.1.2 Tracing Level

Value: "Tracing Level" or one of the value names listed in the table in [\[MS-GPREG\]](#) section 3.2.5.1 specifying how the value is deleted.

Type: REG\_DWORD.

Size: Equal to size of the Data field.

Data: A 32-bit unsigned integer.

Value	Meaning
0x00000000	Disables NAP tracing on the client.
0x00000001	Sets NAP tracing on the client to basic level.
0x00000002	Sets NAP tracing on the client to advanced level.
0x00000003	Sets NAP tracing on the client to debug level.

## 2.2 User Interface Settings

The NAP client uses UI registry content as display information when UI registry keys are available; otherwise the UI will not display title and description. The UI registry keys can contain localization-dependent content. UI registry entries can be represented in the machine-specific Registry Policy file as follows:

Key: Software\Policies\Microsoft\NetworkAccessProtection\ClientConfig\UI\<LCID>

The <LCID> **language code identifier (LCID)** values are specified in [\[MS-LCID\]](#) section 2.2.

### 2.2.1 SmallText

Value: "SmallText" or one of the value names listed in the table in [\[MS-GPREG\]](#) section 3.2.5.1 specifying how the value is deleted.

Type: REG\_SZ.

Size: Equal to size of the Data field.

Data: A variable-length null-terminated **Unicode** string. This setting specifies the user notification title displayed to the user.

### 2.2.2 LargeText

Value: "LargeText" or one of the value names listed in the table in [\[MS-GPREG\]](#) section 3.2.5.1 specifying how the value is deleted.

Type: REG\_SZ.

Size: Equal to the size of the Data field.

Data: A variable-length null-terminated Unicode string. This setting specifies the user notification sub-title displayed to the user.

### 2.2.3 ImageFile

The ImageFile entry may be represented in the machine-specific Registry Policy file as follows:

Value: "ImageFile" or one of the value names listed in the table in [\[MS-GPREG\]](#) section 3.2.5.1 specifying how the value is deleted.

Type: REG\_BINARY.

Size: Equal to the size of the Data field.

Data: An octet stream representing an image that is displayed in the NAP client user interface. The data interpretation is determined by the image file name extension specified in [ImageFileName](#) ([section 2.2.4](#)).

Implementations MAY<4> choose to support this option. If this option is supported, the image file name key (ImageFileName specified in [section 2.2.4](#)) MUST be available.

### 2.2.4 ImageFileName

Value: "ImageFileName" or one of the value names listed in the table in [\[MS-GPREG\]](#) section 3.2.5.1 specifying how the value is deleted.

Type: REG\_SZ.

Size: Equal to size of the Data field.

Data: A variable-length null-terminated Unicode string. This setting is used to determine the format of the image data specified in [section 2.2.3](#). File formats, as indicated in the file type extension, include but are not restricted to bmp, icon, gif, jpeg, exif, png, tiff, wmf, or emf.

## 2.3 Enforcement Client Settings

A NAP **enforcement client** uses the health state of a computer to request a certain level of access to a network. This is done using NAP protocol Statement of Health (SoH) ([\[MS-SOH\]](#) section 2.2.5) and Statement of Health Response (SoHR) ([\[MS-SOH\]](#) section 2.2.6) messages exchanged between a client and a server to validate client conformance with corporate security policies.

Different types of mechanisms transport SoHs intended to manage the health of connected resources. These mechanisms, called enforcement clients, are configured from the NAP Group Policy and are listed in the following table.

Enforcement client	<qec-id> value	Description
Dynamic Host Configuration Protocol (DHCP)	79617	Enforces health policies when a client computer attempts to obtain an IP address from a DHCP server. The implementation is specified in subsection <a href="#">2.3.1</a> .
Remote access	79618	Enforces health policies when a client computer attempts to gain access to the network through a virtual private network (VPN) connection. The implementation is specified in subsection <a href="#">2.3.2</a> .
Internet Protocol security (IPsec)	79619	Enforces health policies when a client computer attempts to communicate with another computer using IPsec. The implementation is specified in subsection <a href="#">2.3.3</a> .

Enforcement client	<qec-id> value	Description
Wireless EAPOL	79620	Enforces health policies when a client computer attempts to access a network through an 802.1X wireless connection or an authenticating switch connection. <5> The implementation is specified in subsection <a href="#">2.3.4</a> .
Remote desktop gateway (RDG)	79621	Enforces health policies when a client computer attempts to gain access to an RDG. The implementation is specified in subsection <a href="#">2.3.5</a> .
Extensible Authentication Protocol (EAP)	79623	Enforces health policies when a client computer attempts to access a network through an 802.1X wireless connection or an authenticating switch connection. The implementation is specified in subsection <a href="#">2.3.6</a> .

For more information on NAP enforcement clients, see [\[MSDN-NAP\]](#).

The NAP enforcement client settings are compounded from one registry entry per enforcement client that MUST be represented in the machine-specific Registry Policy file as follows:

Key: Software\Policies\Microsoft\NetworkAccessProtection\ClientConfig\Qecs\<qec-id>

All the <qec-id> keys MUST have the following value:

Value: "Enabled" or one of the value names listed in the table in [\[MS-GPREG\]](#) section 3.2.5.1 specifying how the value is deleted.

Type: REG\_DWORD.

Size: Equal to size of the Data field.

Data: A 32-bit unsigned integer.

Value	Meaning
0x00000000	Disables NAP enforcement.
0x00000001	Enables NAP enforcement.

### 2.3.1 DHCP Enforcement

The **Dynamic Host Configuration Protocol (DHCP)** NAP enforcement client provides functionality in the DHCP Client service that uses industry standard DHCP messages to exchange system health messages specified in section [2.3](#).

The client sends system health information to the DHCP enforcement server, using DHCP Extensions, as specified in [\[MS-DHCPN\]](#). The DHCP server may send the SoH to a policy server (for example NPS) for evaluation. Based on the policy server response, the DHCP enforcement server can provide IP addressing information that allows the client to connect to other computers, or it can provide IP addressing information that limits the computers to which the client can connect. Alternatively, the DHCP enforcement server might not provide IP addressing information.

For more information on DHCP, see [\[MSDN-DHCP\]](#).

## 2.3.2 Remote Access Enforcement

The remote access NAP enforcement client provides functionality in the **Remote Access Service (RAS)** that makes it possible to connect a remote client computer to a network server over a **virtual private network (VPN)** and to send health information provided by NAP.

When a client attempts to access a network over VPN, the VPN server can request an SoH response message ([\[MS-SOH\]](#) section 2.2.6) from the client by sending some PEAP TLV ([\[MS-PEAP\]](#)) messages. If the RAS enforcement client is enabled on the client, it responds with an SoH message, as specified in [\[MS-PEAP\]](#) section 2.2.8. The RAS server might send the SoH message to a policy server (for example NPS) for evaluation. Based on the policy server response, the RAS server can create a VPN connection that enables the client to connect to other computers on the network, or the RAS server can quarantine the client by limiting the computers to which it can connect using the VPN connection. Alternatively, the RAS server can reject the client access request.

For more information on RAS clients, see [\[MSDN-RAS\]](#).

## 2.3.3 IPsec Enforcement

The IPsec NAP enforcement client is a component that obtains an SoH, as specified in section [2.3](#), and sends it to a health registration authority (HRA). The protocol used by the client to communicate with the HRA is called **Health Certificate Enrollment Protocol (HCEP)**, as specified in [\[MS-HCEP\]](#).

The HCEP request message payload sent by the Health Certificate Enrollment Agent (HCEA) contains a PKCS #10 certificate request, as specified in [\[RFC2986\]](#), which contains an SoH message ([\[MS-SOH\]](#) section 2.2.5).

The HRA sends the SoH to a policy server (for example NPS) for evaluation. Based on the policy server response, the HRA performs the following steps:

- If the policy server response is that the client is compliant with corporate health policy, the HRA requests a **certificate authority (CA)** to issue a certificate and sends the issued certificate back to the client.
- If the client's health state is not compliant, the HRA can request a certificate from the CA, with the certificate containing an indication that the client is unhealthy.

In the IPsec scenario, the client is able to connect to a network, but the client does not have a valid health certificate for communicating on that network until the HCEP message exchange is completed. If the client is non-compliant, the HRA might not provide a health certificate.

The IPsec NAP enforcement client also interacts with the IPsec components to ensure that the health certificate is used for IPsec-protected communication.

For more information, see [\[MSFT-IPSEC\]](#) and [\[MSFT-NAPIPSEC\]](#).

The IPsec NAP enforcement client can be configured to use the local predefined IPsec policy rather than the default IPsec policy. The use local IPsec policy registry entry can be represented in the machine-specific Registry Policy file as follows:

Key: Software\Policies\Microsoft\NetworkAccessProtection\ClientConfig

Value: "PlumbIpsecPolicy" or one of the value names specified in the table in [\[MS-GPREG\]](#) section 3.2.5.1 specifying how the value is deleted.

Type: REG\_DWORD.

Size: Equal to size of the Data field.

Data: A 32-bit unsigned integer.

Value	Meaning
0x00000000	Allows the use of domain-based IPsec Group Policy on the client.
0x00000001	Uses the local IPsec policy on the client.

### 2.3.4 Wireless EAPOL Enforcement

See [EAP Enforcement \(section 2.3.6\)](#).<6>

### 2.3.5 RDG Enforcement

The NAP remote desktop gateway (RDG) enforcement client is a component that obtains the SoH from NAP as specified in section [2.3](#) and uses it while the client connects to a remote desktop server.

While attempting to access an RDG server, the remote desktop client (RDC) obtains an SoH, as specified in section [2.3](#), and sends it in the TSGU, as specified in [\[MS-TSGU\]](#).

The RDG server MAY send the SoH to a policy server (for example MPS) for evaluation. Based on the policy server response, the RDG server MAY grant access to the RDC, or the remote desktop server MAY grant access but deny access to certain machine resources such as hard drives, disks, PnP devices, and clipboards.<7>

For more information on RDG and NAP, see [\[MSFT-RDG\]](#).

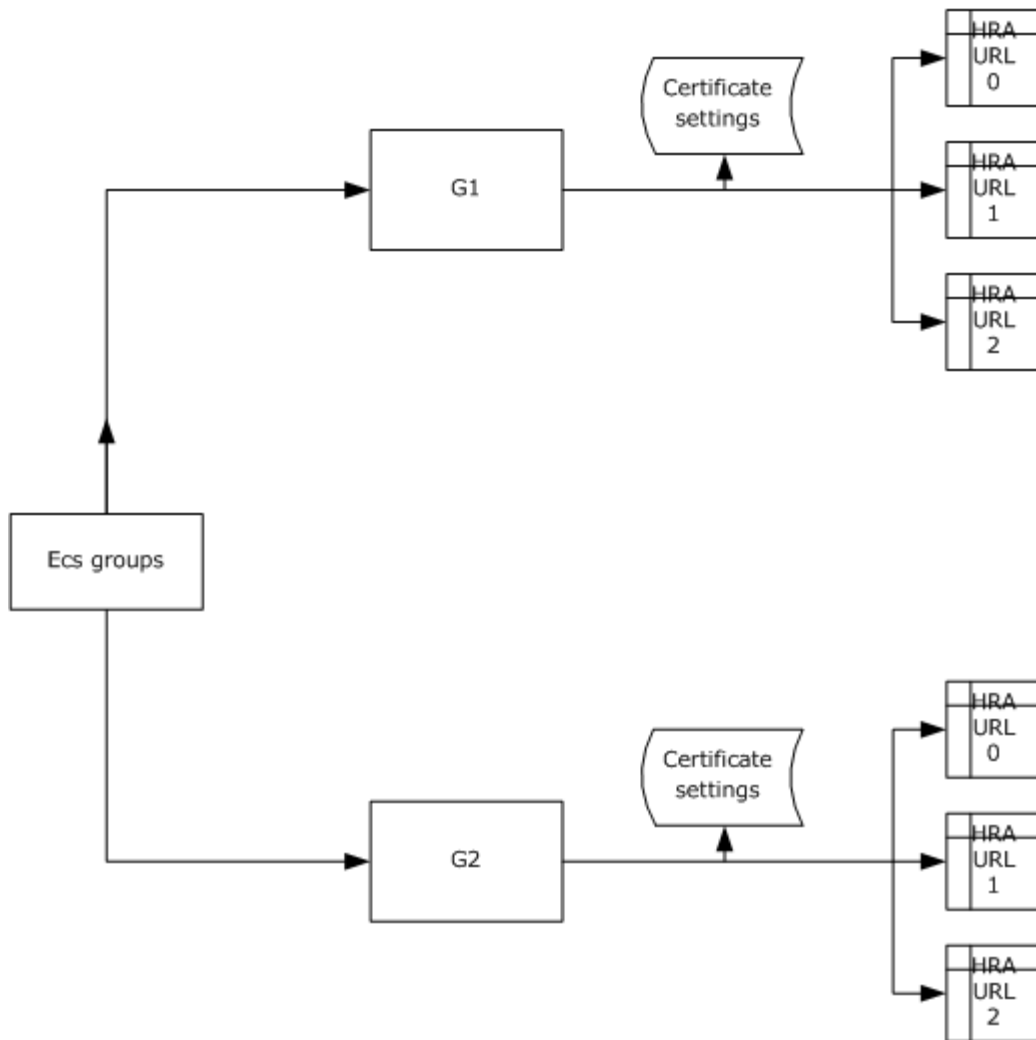
### 2.3.6 EAP Enforcement

The NAP EAP enforcement client extends the 802.1x supplicant, allows responding to an SoH Request TLV message with an SoH TLV message, as specified in section [2.3](#), and sends the response using an 802.1x supplicant for 802.1x-authenticated connections, as described in [\[MS-NAPSO\]](#).<8>

While attempting to access a LAN or WLAN using an 802.1x connection, the 802.1x supplicant obtains an SoH as specified in section [2.3](#) and sends it in a **PEAP-Type-Length-Value (TLV)** extension, as specified in [\[MS-PEAP\]](#) section 2.2.8. The 802.1x server can send the SoH to a policy server (for example NPS) for evaluation. Based on the policy server response, the 802.1x server can enable the client to connect to other computers on the network or can restrict the traffic of the NAP client by specifying a restricted network that limits access to specific resources on the network, as described in [\[MS-NAPSO\]](#). Alternatively, the 802.1x server can reject supplicant access.

## 2.4 Health Registration Authority (HRA) Settings

NAP HRAs are divided into groups that use the same certificate security settings specified in section [2.3.3](#). The HRA groups are represented in the registry as depicted in the following figure.



**Figure 1: Health certificate server (hcs) groups registry representation**

The NAP HRA settings are compounded from multiple registry entries that MUST be represented in the machine-specific Registry Policy file as follows:

Key: Software\Policies\Microsoft\NetworkAccessProtection\ClientConfig\Enroll\HcsGroups\<Server-Group>

<Server-Group> is the name of the HRAs group.

### 2.4.1 PKCS#10 Certificate Settings

The **health certificate enrollment agent (HCEA)** MUST be configured with the required security parameters to construct the Public Key Cryptography Standards (PKCS) #10 certificate request, as specified in [\[MS-HCEP\]](#) section 2.2.1.4.



These security parameters are configured in the NAP Group Policy. If the IPsec enforcement client is enabled, as specified in section [2.3](#), the security parameters entries MUST be represented in the machine-specific Registry Policy file as follows:

Key: **Software\Policies\Microsoft\NetworkAccessProtection\ClientConfig\Enroll\HcsGroups\<Server-Group>**

Security parameter values follow in sections [2.4.1.1](#) through [2.4.1.6](#).

### 2.4.1.1 Cryptographic Service Provider (CSP)

The name of the cryptographic service provider (CSP) used to generate the key pair on the HCEA.

Value: "CSP" or one of the value names specified in the table in [\[MS-GPREG\]](#) section 3.2.5.1 specifying how the value is deleted.

Type: REG\_SZ.

Size: Equal to size of the Data field.

Data: A variable-length null-terminated Unicode string. This setting specifies the name of the CSP used.

The following CSPs are available by default. [<9>](#)

CSP	Description
Microsoft Base Cryptographic Provider v1.0	A broad set of basic cryptographic functionality that can be exported to other countries or regions.
Microsoft Strong Cryptographic Provider	An extension of the Microsoft Base Cryptographic Provider.
Microsoft Enhanced Cryptographic Provider v1.0	Microsoft Base Cryptographic Provider with support for longer keys and additional algorithms.
Microsoft AES Cryptographic Provider	Microsoft Enhanced Cryptographic Provider with support for AES encryption algorithms.
Microsoft Base DSS Cryptographic Provider	Provides hashing, data signing, and signature verification capability, using the Secure Hash Algorithm (SHA) and Digital Signature Standard (DSS) algorithms.
Microsoft Base DSS and Diffie-Hellman Cryptographic Provider	A superset of the DSS Cryptographic Provider that also supports Diffie-Hellman key exchange, hashing, data signing, and signature verification, using the Secure Hash Algorithm (SHA) and Digital Signature Standard (DSS) algorithms.
Microsoft Enhanced DSS and Diffie-Hellman Cryptographic Provider	Supports Diffie-Hellman key exchange (a 40-bit DES derivative), SHA hashing, DSS data signing, and DSS signature verification.
Microsoft DH SChannel Cryptographic Provider	Supports hashing, data signing with DSS, generating Diffie-Hellman (D-H) keys, exchanging D-H keys, and exporting a D-H key. This CSP supports key derivation for the SSL3 and TLS1 protocols.
Microsoft RSA/SChannel Cryptographic Provider	Supports hashing, data signing, and signature verification. The algorithm identifier CALG_SSL3_SHAMD5 is used for SSL 3.0 and TLS 1.0 client authentication. This CSP supports key derivation for the SSL2, PCT1, SSL3, and

CSP	Description
	TLS1 protocols.
Microsoft Base Smart Card Crypto Provider	Provides all of the functionality of the <b>Microsoft Strong Cryptographic Provider</b> . The Microsoft Base Smart Card Cryptographic Service Provider communicates with individual smart cards that translate the characteristics of particular smart cards into a uniform interface. For more information on smart cards, see <a href="#">[MSDN-SC]</a> .
Microsoft Exchange Cryptographic Provider v1.0	A 64-bit block encryption CSP tied to the Mail API.

### 2.4.1.2 Cryptographic Provider Type

The type of the cryptographic service provider (CSP) used to generate the key pair on the HCEA. There are many different standard data formats and protocols that CSP can use. These are generally organized into types, each of which has its own set of data formats and processing rules. <10>

Value: "CSPTYPE" or one of the value names specified in the table in [\[MS-GPREG\]](#) section 3.2.5.1 specifying how the value is deleted.

Type: REG\_DWORD.

Size: Equal to size of the Data field.

Data: A 32-bit value consisting of the following type values.

Name	Value	Meaning
PROV_RSA_FULL	0x00000001	Supports both digital signatures and data encryption. It is considered a general purpose CSP. The RSA public key algorithm is used for all public key operations.
PROV_DSS	0x00000003	Supports hashes and digital signatures. The signature algorithm specified by the PROV_DSS provider type is the <b>Digital Signature Algorithm (DSA)</b> .
PROV_RSA_AES	0x00000018	Supports the same as PROV_RSA_FULL with additional AES encryption capability.
PROV_DSS_DH	0x0000000D	A superset of the PROV_DSS provider type with Diffie-Hellman key exchange.
PROV_DH_SCHANNEL	0x00000012	Supports both Diffie-Hellman and Schannel protocols.
PROV_RSA_SCHANNEL	0x0000000C	Supports both RSA and Schannel protocols.
PROV_MS_EXCHANGE	0x00000005	Designed for the cryptographic needs of the Exchange mail application and other applications compatible with Microsoft Mail.

### 2.4.1.3 Public Key OID

A Public key OID is an object identifier (OID) identifying the algorithm of the public-private key pair associated with the certificate. For more information, see [\[RFC3447\]](#).

Value: "PublicKeyAlgOid" or one of the value names specified in the table in [\[MS-GPREG\]](#) section 3.2.5.1 specifying how the value is deleted.

Type: REG\_SZ.

Size: Equal to size of the Data field.

Data: A variable-length null-terminated Unicode string. This setting specifies the public key OID used.

The following table maps public key algorithm names and OIDs. [<11>](#)

Name	OID
RSA	1.2.840.113549.1.1.1
DSA	1.2.840.10040.4.1
DH	1.2.840.10046.2.1
RSASSA-PSS	1.2.840.113549.1.1.10
DSA	1.3.14.3.2.12
DH	1.2.840.113549.1.3.1
RSA_KEYX	1.3.14.3.2.22
mosaicKmandUpdSig	2.16.840.1.101.2.1.1.20
ESDH	1.2.840.113549.1.9.16.3.5
NO_SIGN	1.3.6.1.5.5.7.6.2
ECC	1.2.840.10045.2.1
ECDSA_P256	1.2.840.10045.3.1.7
ECDSA_P384	1.3.132.0.34
ECDSA_P521	1.3.132.0.35
RSAES_OAEP	1.2.840.113549.1.1.7
ECDH_STD_SHA1_KDF	1.3.133.16.840.63.0.2

#### 2.4.1.4 Public Key Length

The key length of the public-private key pair associated with the certificate. For more information, see [\[RFC3447\]](#).

Value: "KeyLength" or one of the value names specified in the table in [\[MS-GPREG\]](#) section 3.2.5.1 specifying how the value is deleted.

Type: REG\_DWORD.

Size: Equal to size of the Data field.

Data: A 32-bit value consisting of the public key length. The minimum "Public Key Length" expected is 0x00000800. If the "Public Key Length" is less than 0x00000800, the Data received from group policy is ignored, and the "Public Key Length" field is set to 0x00000800.

#### 2.4.1.5 Public Key Spec

When a public-private key pair is generated, several types of keys can be created. Keys can be created to allow their use with encryption, digital signatures, or both. The **Value** represents the public key associated with the certificate.

Value: "PublicKeySpec" or one of the value names specified in the table in [\[MS-GPREG\]](#) section 3.2.5.1 specifying how the value is deleted.<12>

Type: REG\_DWORD.

Size: Equal to the size of the Data field.

Data: A 32-bit value that is set to 0x00000001 (AT\_KEYEXCHANGE).

#### 2.4.1.6 Hash Algorithm OID

The Hash Algorithm OID is an OID identifying the hash algorithm used to sign the certificate request. For more information on hash algorithms, see [\[RFC3174\]](#).

Value: "HashAlgOid" or one of the value names listed in the table in [\[MS-GPREG\]](#) section 3.2.5.1 specifying how the value is deleted.

Type: REG\_SZ.

Size: Equal to size of the Data field.

Data: A variable-length null-terminated Unicode string. This setting specifies the public key OID used.

The list of supported hash algorithm OIDs follows.

Name	OID
sha1RSA	1.2.840.113549.1.1.5
md5RSA	1.2.840.113549.1.1.4
sha1DSA	1.2.840.10040.4.3
sha1RSA	1.3.14.3.2.29
shaRSA	1.3.14.3.2.15
md5RSA	1.3.14.3.2.3
md2RSA	1.2.840.113549.1.1.2
md4RSA	1.2.840.113549.1.1.3
md4RSA	1.3.14.3.2.2
md4RSA	1.3.14.3.2.4

Name	OID
md2RSA	1.3.14.7.2.3.1
sha1DSA	1.3.14.3.2.13
dsaSHA1	1.3.14.3.2.27
mosaicUpdatedSig	2.16.840.1.101.2.1.1.19
sha1NoSign	1.3.14.3.2.26
md5NoSign	1.2.840.113549.2.5
sha256NoSign	2.16.840.1.101.3.4.2.1
sha384NoSign	2.16.840.1.101.3.4.2.2
sha512NoSign	2.16.840.1.101.3.4.2.3
sha256RSA	1.2.840.113549.1.1.11
sha384RSA	1.2.840.113549.1.1.12
sha512RSA	1.2.840.113549.1.1.13
RSASSA-PSS	1.2.840.113549.1.1.10
sha1ECDSA	1.2.840.10045.4.1
sha256ECDSA	1.2.840.10045.4.3.2
sha384ECDSA	1.2.840.10045.4.3.3
sha512ECDSA	1.2.840.10045.4.3.4
specifiedECDSA	1.2.840.10045.4.3

## 2.4.2 HRA Auto-Discovery

HRA groups can be set by group policy or can be discovered automatically by the NAP client using DNS SRV lookup, as specified in [RFC2782](#). A NAP client discovers a suitable HRA at start-up using the following sequence:

1. Query SRV records for HRAs in the Active Directory site of the client (for example, `_hra._tcp.<sitename>._sites.<domainname>`)
2. Query SRV records for HRAs in the Active Directory domain of the client (for example, `_hra._tcp.<domainname>`)
3. Query SRV records for HRAs in the DNS domain of the client (for example, `_hra._tcp.<DNSname>`)

To enable HRA auto discovery, a registry setting entry MUST be represented in the machine-specific Registry Policy file as follows:

Key: Software\Policies\Microsoft\NetworkAccessProtection\ClientConfig\Enroll\HcsGroups

Value: "EnableDiscovery" or one of the value names specified in the table in [\[MS-GPREG\]](#) section 3.2.5.1 specifying how the value is deleted.

Type: REG\_DWORD.

Size: Equal to the size of the Data field.

Data: A 32-bit unsigned integer.

Value	Meaning
0x00000000	Disables HRA auto discovery.
0x00000001	Enables HRA auto discovery.

### 2.4.3 Use SSL

The HCEP uses HTTP (as specified in [\[RFC2616\]](#)) or HTTP over TLS (as specified in [\[RFC2818\]](#)) as the transport for its messages. To configure how HCEP connects to the HRA, a registry setting entry MUST be represented in the machine-specific Registry Policy file as follows:

Key: Software\Policies\Microsoft\NetworkAccessProtection\ClientConfig\Enroll\HcsGroups\<Server-Group>

Value: "AllowNonSSL" or one of the value names specified in the table in [\[MS-GPREG\]](#) section 3.2.5.1 specifying how the value is deleted.

Type: REG\_DWORD.

Size: Equal to the size of the Data field.

Data: A 32-bit unsigned integer.

Value	Meaning
0x00000000	Disables SSL.
0x00000001	Enables SSL.

Communication with the HRA is always performed using SSL when HRA auto-discovery is used; see section [2.4.1](#).

### 2.4.4 HRA URLs

Group Policy enables the administrator to configure specific HRA groups by setting the URL. To configure an HRA URL, a registry entry MUST be represented in the machine-specific Registry Policy file as follows:

Key: Software\Policies\Microsoft\NetworkAccessProtection\ClientConfig\Enroll\HcsGroups\<Server-Group>\<String>

<String> is the key name of a specific HRA. NAP GP Extension uses Url#.

Url# is the string "Url" with the HRA order in the group concatenated to it. The Policy Group can define 0 to 254 HRAs in a group. If there are no URLs defined and HRA auto-discovery specified in

section [2.4.2](#) is set to 0 the NAP client won't be able to request a health certificate as specified in section [2.3.3](#).

Example: A URL of the first HRA is defined under the registry key "Software\Policies\Microsoft\NetworkAccessProtection\ClientConfig\Enroll\HcsGroups\MyGroup\Url0".

#### 2.4.4.1 Server

Value: "Server" or one of the value names specified in the table in [\[MS-GPREG\]](#) section 3.2.5.1 specifying how the value is deleted.

Type: REG\_SZ.

Size: Equal to size of the Data field.

Data: A variable-length null-terminated Unicode string. This setting specifies the HRA URL to connect to.

#### 2.4.4.2 Order

Value: "Order" or one of the value names specified in the table in [\[MS-GPREG\]](#) section 3.2.5.1 specifying how the value is deleted.

Type: REG\_DWORD.

Size: Equal to size of the Data field.

Data: A 32-bit value in the range from 0x00000000 to 0x000000FE, inclusive.

#### 2.4.5 Reconnect Attempts

Group Policy enables the administrator to configure how long the client should wait before attempting to reconnect to an HRA in the event of a connection failure. To configure a blackout interval, a registry entry MUST be represented in the machine-specific Registry Policy file as follows:

Key: Software\Policies\Microsoft\NetworkAccessProtection\ClientConfig\Enroll\HcsGroups\<Server-Group>

Value: "BlackOutIntervalInMinutes" or one of the value names listed in the table in [\[MS-GPREG\]](#) section 3.2.5.1 specifying how the value is deleted.

Type: REG\_DWORD.

Size: Equal to size of the Data field.

Data: A 32-bit value representing time in minutes. For example, 0x0000000A represents 10 minutes of blackout.

#### 2.5 SoH Settings

SoH specified in [\[MS-SOH\]](#) has two settings that an administrator can configure using Group Policy. These settings are represented in the machine-specific registry as values ShatimeoutInMsec (section [2.5.1](#)) and BackwardCompatible (section [2.5.2](#)). In case these registry values are not set by the administrator, the settings are assigned default data by the NAP client. To configure SoH, registry values ShatimeoutInMsec and BackwardCompatible may be present in the machine-specific Registry Policy file under the following key:

Key: Software\Policies\Microsoft\NetworkAccessProtection\ClientConfig\

### 2.5.1 Task Timer

A Task Timer is a **system health agent (SHA)** (specified in [\[MS-WSH\]](#)) timeout, as specified in [\[MS-NAPSO\]](#) section 6.4.3.1.

Value: "ShatimeoutInMsec" or one of the value names specified in the table in [\[MS-GPREG\]](#) section 3.2.5.1 specifying how the value is deleted.

Type: REG\_DWORD.

Size: Equal to size of the Data field.

Data: A 32-bit value representing time in milliseconds. For example, 0x0000000A represents 10 milliseconds of blackout.

### 2.5.2 Backward Compatible

This setting determines the version of the message content, as specified in [\[MS-SOH\]](#) section 2.2.5.1.

Value: "BackwardCompatible" or one of the value names specified in the table in [\[MS-GPREG\]](#) section 3.2.5.1 specifying how the value is deleted.

Type: REG\_DWORD.

Size: Equal to size of the Data field.

Data: A 32-bit value consisting of the following values.

Value	Meaning
0x00000001	SSoH ( <a href="#">[MS-SOH]</a> section 2.2.8) SoHReportEntry (0 plus)
0x00000002	SoH Mode Subheader SSoH ( <a href="#">[MS-SOH]</a> section 2.2.8) SoHReportEntry (0 plus)



### 3 Structure Examples

In the following example, an administrator sets up a new domain and attempts to enable NAP DHCP enforcement on the computers in the domain. The client computers run operating systems that contain NAP client processes initialized at startup and terminated at shutdown.

First, the administrator installs and configures an operating system on a computer that is intended to function as the **domain controller (DC)**. After taking the necessary steps to designate the computer as a DC and creating a user account over the new domain, the administrator restarts the machine and logs on as the newly created user.

Next, the administrator launches the user interface for the administrative plug-in and sets the DHCP enforcement to Enabled. This causes the following entry to be written to the machine-specific Registry Policy file of the relevant GPO.

Key: Software\Policies\Microsoft\NetworkAccessProtection\ClientConfig\Qecs\79617

Value: "Enabled".

Type: REG\_DWORD.

Size: Equal to the size of the Data field.

Data: 0x00000001.

The administrator then adds client computers to this domain. When a client computer is restarted for the first time after being added to the domain, it contacts the domain controller and reads Group Policy information, as specified in [\[MS-GPOL\]](#). As part of this process, a machine-specific registry policy file containing the following items is also downloaded:

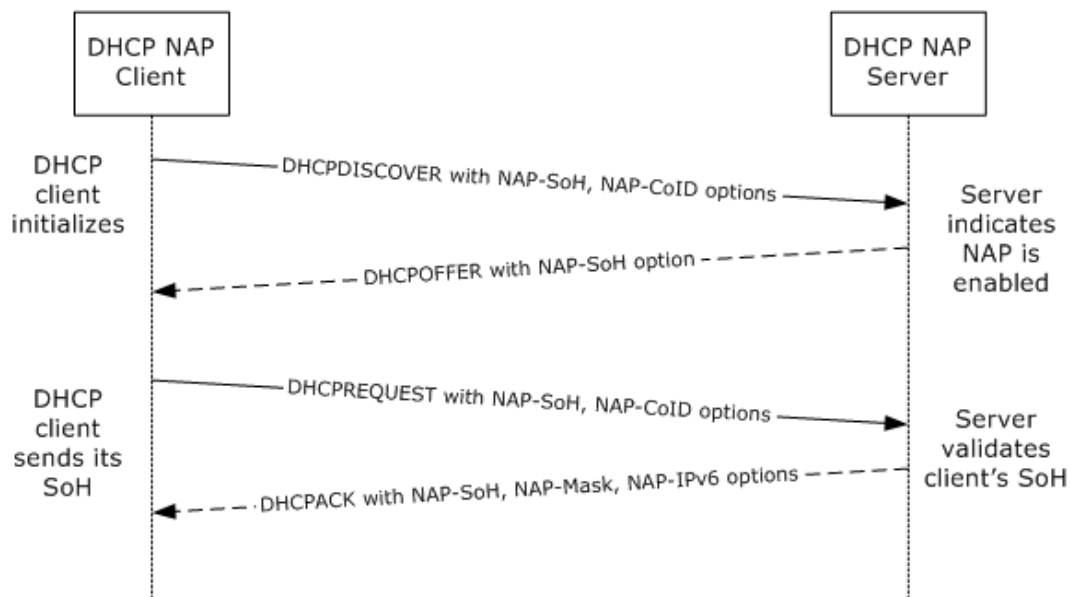
- A set of values under the registry key Software\Policies\Microsoft\NetworkAccessProtection\ClientConfig\Qecs\79617 that indicates that the NAP client will instruct the DHCP client on the system to send an SoH when requesting the IP address for the machine, as specified in section [2.3.1](#).

The Group Policy: Registry Extension Encoding on the client parses this file and adds the configuration information to the machine's registry.

The NAP client process polls the registry and determines that its Group Policy settings have changed. The NAP process then reads the enforcement values and sets the system DHCP client to send an SoH.

When a user logs on to the computer, the DHCP client requests the NAP agent for an SoH. NAP invokes the SHA to collect health information and to generate an SoH. The SoH is then sent by the DHCP client to the policy server.

The following figure represents such a transaction.



**Figure 2: DHCP new lease acquisition process**

When the SoH is sent, the client requests access to a service and, as a precondition for that access, is required to prove that it is in good health. When the SoH is received, it is forwarded to an infrastructure server that evaluates the SoH and returns the response (the SoHR) to the client by means of the original receiver of the SoH.

Generally, the receipt of an SoHR by the client allows access to the service being requested. When the health of the client is not good, the SoHR is likely to contain sufficient instructions to allow the client to seek and receive remedy. After the client is restored to good health, the client can initiate the protocol again.

## 4 Security

### 4.1 Security Considerations for Implementers

The Group Policy: NAP GP Extension sets the NAP enforcement policy on the client computer. This policy consists of HRA URLs and HRA connection transport and certificate security settings, as well as enforcement enabling. These configurations can also be set by the user through the NAP configuration UI. Therefore, it is extremely important that an implementation provide a means of protecting the integrity of the NAP policy against tampering, especially during its transfer from server to client. Ideally, this implementation-specific security method should be provided as part of the transport for the Group Policy: Core Protocol.

### 4.2 Index of Security Fields

None.

## 5 Appendix A: Product Behavior

The information in this specification is applicable to the following Microsoft products or supplemental software. References to product versions include released service packs:

- Microsoft Windows® 2000 operating system
- Windows® XP operating system
- Windows Server® 2003 operating system
- Windows Server® 2003 R2 operating system
- Windows Vista® operating system
- Windows Server® 2008 operating system
- Windows® 7 operating system
- Windows Server® 2008 R2 operating system

Exceptions, if any, are noted below. If a service pack or Quick Fix Engineering (QFE) number appears with the product version, behavior changed in that service pack or QFE. The new behavior also applies to subsequent service packs of the product unless otherwise specified. If a product edition appears with the product version, behavior is different in that product edition.

Unless otherwise specified, any statement of optional behavior in this specification that is prescribed using the terms SHOULD or SHOULD NOT implies product behavior in accordance with the SHOULD or SHOULD NOT prescription. Unless otherwise specified, the term MAY implies that the product does not follow the prescription.

[<1> Section 1.4:](#) Windows implements the generic settings database using the registry.

[<2> Section 1.4:](#) Windows maintains the local configuration under the [HKEY\_LOCAL\_MACHINE\System\CurrentControlSet\Services\NapAgent] registry key.

[<3> Section 1.5:](#) Windows implements the generic settings database using the registry.

[<4> Section 2.2.3:](#) NAP client implementations interpret this setting as the company logo to display. If this key is missing, no image is displayed.

[<5> Section 2.3:](#) Wireless EAPOL is supported on Windows XP.

[<6> Section 2.3.4:](#) The wireless EAPOL enforcement client is available only on NAP client computers running Windows XP SP3.

[<7> Section 2.3.5:](#) The Remote Desktop Gateway Enforcement Client is available with the following systems:

- Windows XP SP3 with Remote Desktop Connection (Terminal Services Client 6.0) installed
- Windows Vista
- Windows 7

[<8> Section 2.3.6:](#) Available with:

- Windows Vista

- Windows 7

<9> [Section 2.4.1.1](#): For more information about the default list of CSPs available on Windows, see [\[MSDN-CSP\]](#).

<10> [Section 2.4.1.2](#): For more information about CSP types, see [\[MSDN-CSP\]](#).

<11> [Section 2.4.1.3](#): For more information on the key algorithms, see [\[MSDN-ALG\]](#).

<12> [Section 2.4.1.5](#): Supported in Windows 7. In Windows Vista and Windows XP SP3, the value is named "KeyType".

## 6 Change Tracking

No table of changes is available. The document is either new or has had no changes since its last release.

## 7 Index

### A

[Applicability](#) 9

### B

[Backward compatible settings](#) 24

### C

[Change tracking](#) 30

[Common data types and fields](#) 10

Cryptographic

[provider type](#) 18

[service provider](#) 17

### D

[Data types and fields - common](#) 10

Details

[backward compatible settings](#) 24

[common data types and fields](#) 10

cryptographic

[provider type](#) 18

[service provider](#) 17

[DHCP enforcement](#) 13

[EAP enforcement](#) 15

[enable tracing value](#) 10

[enforcement client settings](#) 12

[hash algorithm OID](#) 20

HRA

[auto-discovery](#) 21

[settings](#) 15

[URLs](#) 22

[ImageFile value](#) 12

[ImageFileName value](#) 12

[IPsec enforcement](#) 14

[LargeText value](#) 11

[order value](#) 23

[PKCS#10 certificate settings](#) 16

public key

[length](#) 19

[OID](#) 18

[spec](#) 20

[RDG enforcement](#) 15

[reconnect attempts](#) 23

[remote access enforcement](#) 14

[server value](#) 23

[SmallText value](#) 11

[SoH settings](#) 23

[task timer](#) 24

[trace settings](#) 10

[tracing level value](#) 11

[use SSL](#) 22

[user interface settings](#) 11

[wireless EAPOL enforcement](#) 15

[DHCP enforcement](#) 13

### E

[EAP enforcement](#) 15

[Enable tracing value](#) 10

Enforcement

[client settings](#) 12

[DHCP](#) 13

[EAP](#) 15

[IPsec](#) 14

[RDG](#) 15

[remote access](#) 14

[wireless EAPOL](#) 15

[Example](#) 25

### F

Fields

[security index](#) 27

[vendor-extensible](#) 9

### G

[Glossary](#) 5

### H

[Hash algorithm OID](#) 20

HRA

[auto-discovery](#) 21

[settings](#) 15

[URLs](#) 22

### I

[ImageFile value](#) 12

[ImageFileName value](#) 12

[Implementer - security considerations](#) 27

[Index of security fields](#) 27

[Informative references](#) 6

[Introduction](#) 5

[IPsec enforcement](#) 14

### L

[LargeText value](#) 11

[Localization](#) 9

### N

[Normative references](#) 5

### O

[Order value](#) 23

Overview

[background](#) 7

[Group Policy extension overview](#) 8

[synopsis](#) 7

### P

[PKCS#10 certificate settings](#) 16  
[Product behavior](#) 28  
Public key  
  [length](#) 19  
  [OID](#) 18  
  [spec](#) 20

## R

[RDG enforcement](#) 15  
[Reconnect attempts](#) 23  
References  
  [informative](#) 6  
  [normative](#) 5  
[Relationship to protocols and other structures](#) 8  
[Remote access enforcement](#) 14

## S

Security  
  [field index](#) 27  
  [implementer considerations](#) 27  
[Server value](#) 23  
Settings  
  [backward compatible](#) 24  
  [enforcement client](#) 12  
  [HRA](#) 15  
  [PKCS#10 certificate](#) 16  
  [SoH](#) 23  
  [trace](#) 10  
  [user interface](#) 11  
[SmallText value](#) 11  
[SoH settings](#) 23  
Structures  
  [enforcement client](#) 12  
  [HRA](#) 15  
  [overview](#) 10  
  [SoH](#) 23  
  [trace](#) 10  
  [user interface](#) 11

## T

[Task timer](#) 24  
[Trace settings](#) 10  
[Tracing level value](#) 11  
[Tracking changes](#) 30

## U

[Use SSL](#) 22  
[User interface settings](#) 11

## V

Values  
  [enable tracing](#) 10  
  [ImageFile](#) 12  
  [ImageFileName](#) 12  
  [LargeText](#) 11  
  [order](#) 23  
  [server](#) 23

[SmallText](#) 11  
  [tracing level](#) 11  
[Vendor-extensible fields](#) 9  
[Versioning](#) 9

## W

[Wireless EAPOL enforcement](#) 15