

[MS-DPDX]: DirectPlay DXDiag Usage Protocol Specification

Intellectual Property Rights Notice for Open Specifications Documentation

- **Technical Documentation.** Microsoft publishes Open Specifications documentation for protocols, file formats, languages, standards as well as overviews of the interaction among each of these technologies.
- **Copyrights.** This documentation is covered by Microsoft copyrights. Regardless of any other terms that are contained in the terms of use for the Microsoft website that hosts this documentation, you may make copies of it in order to develop implementations of the technologies described in the Open Specifications and may distribute portions of it in your implementations using these technologies or your documentation as necessary to properly document the implementation. You may also distribute in your implementation, with or without modification, any schema, IDL's, or code samples that are included in the documentation. This permission also applies to any documents that are referenced in the Open Specifications.
- **No Trade Secrets.** Microsoft does not claim any trade secret rights in this documentation.
- **Patents.** Microsoft has patents that may cover your implementations of the technologies described in the Open Specifications. Neither this notice nor Microsoft's delivery of the documentation grants any licenses under those or any other Microsoft patents. However, a given Open Specification may be covered by Microsoft's Open Specification Promise (available here: <http://www.microsoft.com/interop/osp>) or the Community Promise (available here: <http://www.microsoft.com/interop/cp/default.msp>). If you would prefer a written license, or if the technologies described in the Open Specifications are not covered by the Open Specifications Promise or Community Promise, as applicable, patent licenses are available by contacting iplg@microsoft.com.
- **Trademarks.** The names of companies and products contained in this documentation may be covered by trademarks or similar intellectual property rights. This notice does not grant any licenses under those rights.
- **Fictitious Names.** The example companies, organizations, products, domain names, e-mail addresses, logos, people, places, and events depicted in this documentation are fictitious. No association with any real company, organization, product, domain name, email address, logo, person, place, or event is intended or should be inferred.

Reservation of Rights. All other rights are reserved, and this notice does not grant any rights other than specifically described above, whether by implication, estoppel, or otherwise.

Tools. The Open Specifications do not require the use of Microsoft programming tools or programming environments in order for you to develop an implementation. If you have access to Microsoft programming tools and environments you are free to take advantage of them. Certain Open Specifications are intended for use in conjunction with publicly available standard specifications and network programming art, and assumes that the reader either is familiar with the aforementioned material or has immediate access to it.

Revision Summary

Date	Revision History	Revision Class	Comments
07/20/2007	0.1	Major	MCPP Milestone 5 Initial Availability
09/28/2007	0.1.1	Editorial	Revised and edited the technical content.
10/23/2007	0.2	Minor	Updated the technical content.
11/30/2007	0.3	Minor	Updated the technical content.
01/25/2008	1.0	Major	Updated and revised the technical content.
03/14/2008	2.0	Major	Updated and revised the technical content.
05/16/2008	2.0.1	Editorial	Revised and edited the technical content.
06/20/2008	2.1	Minor	Updated the technical content.
07/25/2008	2.2	Minor	Updated the technical content.
08/29/2008	3.0	Major	Updated and revised the technical content.
10/24/2008	4.0	Major	Updated and revised the technical content.
12/05/2008	5.0	Major	Updated and revised the technical content.
01/16/2009	6.0	Major	Updated and revised the technical content.
02/27/2009	7.0	Major	Updated and revised the technical content.
04/10/2009	8.0	Major	Updated and revised the technical content.
05/22/2009	9.0	Major	Updated and revised the technical content.
07/02/2009	10.0	Major	Updated and revised the technical content.
08/14/2009	10.1	Minor	Updated the technical content.
09/25/2009	11.0	Major	Updated and revised the technical content.
11/06/2009	11.0.1	Editorial	Revised and edited the technical content.
12/18/2009	11.0.2	Editorial	Revised and edited the technical content.
01/29/2010	11.1	Minor	Updated the technical content.
03/12/2010	11.1.1	Editorial	Revised and edited the technical content.
04/23/2010	11.1.2	Editorial	Revised and edited the technical content.
06/04/2010	11.2	Minor	Updated the technical content.
07/16/2010	11.3	Minor	Clarified the meaning of the technical content.

Date	Revision History	Revision Class	Comments
08/27/2010	11.4	Minor	Clarified the meaning of the technical content.
10/08/2010	11.4	No change	No changes to the meaning, language, or formatting of the technical content.
11/19/2010	11.4	No change	No changes to the meaning, language, or formatting of the technical content.
01/07/2011	11.4	No change	No changes to the meaning, language, or formatting of the technical content.
02/11/2011	11.4	No change	No changes to the meaning, language, or formatting of the technical content.

Contents

1 Introduction	7
1.1 Glossary	7
1.2 References	9
1.2.1 Normative References	9
1.2.2 Informative References	9
1.3 Overview	10
1.3.1 How DXDiag Uses DirectPlay	11
1.4 Relationship to Other Protocols	11
1.5 Prerequisites/Preconditions	12
1.6 Applicability Statement	12
1.7 Versioning and Capability Negotiation	12
1.8 Vendor-Extensible Fields	13
1.9 Standards Assignments	13
2 Messages	14
2.1 Transport	14
2.2 Message Syntax	14
2.2.1 DPNID	14
2.2.2 _MESSAGE_HEADER	14
2.2.3 DXDiag DirectPlay Packets	16
2.2.4 EnumQuery	18
2.2.5 EnumResponse	19
2.2.6 SESS_PATH_TEST	22
2.2.7 TRANS_COMMAND_CONNECT	23
2.2.8 TRANS_COMMAND_CONNECT_ACCEPT	24
2.2.9 TRANS_COMMAND_SACK	26
2.2.10 TRANS_USERDATA_ACK_SESSION_INFO	28
2.2.11 TRANS_USERDATA_ADD_PLAYER	28
2.2.12 TRANS_USERDATA_CONNECT_ATTEMPT_FAILED	31
2.2.13 TRANS_USERDATA_CONNECT_FAILED	31
2.2.14 TRANS_USERDATA_TERMINATE_SESSION	32
2.2.15 TRANS_USERDATA_DESTROY_PLAYER	33
2.2.16 TRANS_USERDATA_END_OF_STREAM	34
2.2.17 TRANS_USERDATA_HEADER	35
2.2.17.1 Coalesced Payloads	37
2.2.18 TRANS_USERDATA_HOST_MIGRATE	38
2.2.19 TRANS_USERDATA_HOST_MIGRATE_COMPLETE	39
2.2.20 TRANS_USERDATA_INSTRUCT_CONNECT	39
2.2.21 TRANS_USERDATA_INSTRUCTED_CONNECT_FAILED	40
2.2.22 TRANS_USERDATA_KEEPLIVE	40
2.2.23 TRANS_USERDATA_NAMETABLE_VERSION	40
2.2.24 TRANS_USERDATA_REQ_NAMETABLE_OP	41
2.2.25 TRANS_USERDATA_ACK_NAMETABLE_OP	41
2.2.26 TRANS_USERDATA_PLAYER_CONNECT_INFO	43
2.2.27 TRANS_USERDATA_REQ_INTEGRITY_CHECK	46
2.2.28 TRANS_USERDATA_INTEGRITY_CHECK	46
2.2.29 TRANS_USERDATA_INTEGRITY_CHECK_RESPONSE	47
2.2.30 TRANS_USERDATA_RESYNC_VERSION	47
2.2.31 TRANS_USERDATA_SEND_MESSAGE	47
2.2.32 TRANS_USERDATA_SEND_PLAYER_DNID	48

2.2.33	TRANS_USERDATA_SEND_SESSION_INFO	49
2.2.33.1	DN_NAMETABLE_ENTRY_INFO.....	53
2.2.33.2	DN_NAMETABLE_MEMBERSHIP_INFO	55
2.2.34	DN_ADDRESSING_URL.....	55
2.2.35	DN_ALTERNATE_ADDRESS (IPv4)	57
2.2.35.1	IN_ADDR (IPv4)	58
2.2.36	DN_ALTERNATE_ADDRESS (IPv6)	58
2.2.36.1	IN6_ADDR (IPv6).....	59
2.2.37	DN_NAMETABLE	60
2.2.38	PATHTESTKEYDATA	60
3	Protocol Details	62
3.1	Common Details	62
3.1.1	Abstract Data Model	62
3.1.2	Timers	62
3.1.2.1	Connect Retry Timer	62
3.1.2.2	EnumQuery Retry Timer	62
3.1.2.3	Retry Timer	62
3.1.2.4	KeepAlive Retry Timer.....	63
3.1.2.5	Path Test Retry Timer	63
3.1.2.6	Delayed Acknowledgment Timer.....	63
3.1.3	Initialization	63
3.1.4	Higher-Layer Triggered Events.....	64
3.1.4.1	Sending a Chat Message.....	64
3.1.4.2	Disconnecting	64
3.1.5	Processing Events and Sequencing Rules.....	64
3.1.5.1	Client Joins a DirectPlay Session with No Other Clients	64
3.1.5.2	Client Joins a DirectPlay Session with Multiple Other Clients	66
3.1.5.3	Client Disconnects from Chat Session.....	68
3.1.5.4	Server Disconnects from Chat Session	68
3.1.5.5	Client Is Forcefully Removed from Session	69
3.1.5.6	Client Detects Loss of Connection to Other Client.....	69
3.1.5.7	Participant Receives Chat Message.....	70
3.1.5.8	Command Byte (bCommand) Validation and Processing	70
3.1.5.9	Control Byte (bControl) Validation and Processing.....	70
3.1.5.10	Send Sequence ID (bSeq) Validation and Processing	71
3.1.5.11	Acknowledged Sequence ID (bNRcv) Processing	71
3.1.5.12	SACK Mask Processing.....	71
3.1.5.13	Send Mask Processing	72
3.1.6	Timer Events	72
3.1.6.1	Connect Retry Timer	72
3.1.6.2	EnumQuery Retry Timer	72
3.1.6.3	Retry Timer	72
3.1.6.4	KeepAlive Retry Timer.....	73
3.1.6.5	Path Test Retry Timer	73
3.1.6.6	Delayed Acknowledgment Timer.....	73
3.1.7	Other Local Events	73
3.2	Server Details	73
3.2.1	Abstract Data Model	73
3.2.2	Timers	73
3.2.3	Initialization	73
3.2.4	Higher-Layer Triggered Events.....	73
3.2.5	Processing Events and Sequencing Rules.....	73

3.2.6	Timer Events	74
3.2.7	Other Local Events	74
3.3	Client Details.....	74
3.3.1	Abstract Data Model	74
3.3.2	Timers	74
3.3.3	Initialization	74
3.3.4	Higher-Layer Triggered Events.....	74
3.3.5	Processing Events and Sequencing Rules.....	74
3.3.6	Timer Events	74
3.3.7	Other Local Events	75
4	Protocol Examples.....	76
4.1	User Joins a DXDiag Chat Session Example	76
4.2	Client Disconnects from a DXDiag Chat Session Example	76
4.3	New Client Joins a Game Session with an Existing Client Example.....	76
5	Security.....	79
5.1	Security Considerations for Implementers.....	79
5.2	Index of Security Parameters	79
6	Appendix A: Product Behavior	80
7	Change Tracking.....	83
8	Index	84

1 Introduction

This specification pertains to the DirectPlay Protocol and describes how DirectPlay messages are used natively by the DXDiag application. This protocol is intended for peer-to-peer network video gaming.

1.1 Glossary

The following terms are defined in [\[MS-GLOS\]](#):

- acknowledgment (ACK)**
- big-endian**
- client**
- coalesced payload**
- cyclic redundancy check (CRC)**
- DirectPlay**
- DirectPlay 4**
- DirectPlay 8**
- DirectPlay 8 protocol**
- DirectPlay 8 server application**
- DirectPlay Host**
- DirectPlay Name Server (DPNSVR)**
- DirectPlay protocol**
- DirectX**
- DirectX Diagnostic (DXDiag)**
- DirectX runtime**
- DPNID**
- game**
- globally unique identifier (GUID)**
- host**
- host migration**
- HRESULT**
- Internet Protocol security (IPsec)**
- Internet Protocol version 4 (IPv4)**
- Internet Protocol version 6 (IPv6)**
- Internetwork Packet Exchange (IPX)**
- ISO/OSI reference model**
- little-endian**
- local area network (LAN)**
- name table**
- network address translation (NAT)**
- network byte order**
- partner**
- peer**
- peer-to-peer mode**
- player**
- round-trip time (RTT)**
- sequence ID**
- server (3)**
- session layer**
- tick count**
- Transmission Control Protocol (TCP)**

transport layer
Unicode
User Datagram Protocol (UDP)

The following terms are specific to this document:

command frame (CFRAME): A special **DirectPlay 8** control frame that does not carry application payload data. For more information, see the DirectPlay 8 Protocol: Reliable Specification ([\[MC-DPL8R\]](#) section 2.2.1). See Also, **data frame**.

CRC-16-IBM algorithm: The **CRC-16-IBM algorithm** polynomial is $x^{16} + x^{15} + x^2 + 1$. Normal and reversed representations are "0x8005" or "0xA001".

data frame (DFRAME): A **DirectPlay 8** frame that exists in the standard connection sequence space and typically carries application payload data. The total size of the DFRAME header and payload should be less than the Maximum Transmission Unit (MTU) of the underlying protocols and network. For more information, see the DirectPlay 8 Protocol: Reliable Specification ([\[MC-DPL8R\]](#) section 2.2.2). See Also, **command frame**.

DXDiag application: See **DirectX Diagnostic (DXDiag)**.

game session: The metadata associated with the collection of computers participating in a single **instance** of a computer **game**.

group: A collection of **players** within a **game session**. Typically, **players** are placed in a **group** when they serve a common purpose.

Note Groups are not supported by the DirectPlay DXDiag Usage Protocol.

instance: A specific occurrence of a **game** running in a **game session**. A **game** application process or module may be created more than one time on a single computer system, or on separate computer systems. Each time a **game** application process or module is created, the occurrence is considered to be a separate **instance**.

modem link (or modem transport): Running the **DXDiag application** over a modem-to-modem link. See Also, **serial link**.

name table entry: The DN_NAMETABLE_MEMBERSHIP_INFO structure along with associated strings and data buffers for an individual participant in the **DXDiag** session. These could be considered players.

next receive: The next 8-bit packet **sequence ID** expected to be received, indicating **acknowledgment** of all packets up to this ID. This is typically represented as a field named **bNRcv** in packet structures. See Also, **next send**.

next send: The next 8-bit packet **sequence ID** that will be sent. This is represented as **bNSeq** in the **selective acknowledgment** packet structure, which does not have a **sequence ID** of its own. **DirectPlay 8 protocol** implementations also keep an internal counter so that IDs can be assigned in order. See Also, **Next Receive**.

payload: The data that is transported to and from the application that is using either the **DirectPlay 4 protocol** or **DirectPlay 8 protocol**.

poll packet (POLL): A packet in which the sender has set the **PACKET_COMMAND_POLL** bit in the packet header. **POLL** indicates that the receiver must immediately acknowledge receipt of the packet when it arrives.

selective acknowledgment (SACK): A cumulative mechanism that indicates successful receipt of packets beyond the **next receive** indicator. **Next receive** reports all packets prior to when its **sequence ID** has been received, but subsequent packets may have arrived out of order or with gaps in the sequence. **SACK** masks enable the receiver to acknowledge these packets so that they do not have to be retried, in addition to the packets that were truly lost. See Also, **acknowledgment (ACK)**, **next receive**, and **next send**.

send mask: A bit-mask mechanism that indicates that previously sent packets may have been dropped, were not marked as reliable, and will never be retried.

serial link (or serial transport): Running the **DXDiag application** over a null modem cable connecting two computers. See Also, **modem link**.

session packet: A **session packet** is associated with **client/server** session management. A **session packet** begins with a zero byte and is used for locating sessions and testing network paths. See **transport packet**.

transport packet: A **transport packet** has a nonzero first byte and is further divided into command, user data, and **acknowledgment** packet types. See **session packet**.

wide characters: Characters represented by a 2-byte value that are encoded using **Unicode** UTF-16. Unless otherwise stated, no range restrictions apply.

MAY, SHOULD, MUST, SHOULD NOT, MUST NOT: These terms (in all caps) are used as specified in [\[RFC2119\]](#). All statements of optional behavior use either MAY, SHOULD, or SHOULD NOT.

1.2 References

1.2.1 Normative References

We conduct frequent surveys of the normative references to assure their continued availability. If you have any issue with finding a normative reference, please contact dochelp@microsoft.com. We will assist you in finding the relevant information. Please check the archive site, <http://msdn2.microsoft.com/en-us/library/E4BD6494-06AD-4aed-9823-445E921C9624>, as an additional source.

[FIPS180] Federal Information Processing Standards Publication, "Secure Hash Standard", FIPS PUB 180-1, April 1995, <http://www.itl.nist.gov/fipspubs/fip180-1.htm>

[IANAPORT] Internet Assigned Numbers Authority, "Port Numbers", November 2006, <http://www.iana.org/assignments/port-numbers>

[MS-DTYP] Microsoft Corporation, "[Windows Data Types](#)", January 2007.

[RFC768] Postel, J., "User Datagram Protocol", STD 6, RFC 768, August 1980, <http://www.ietf.org/rfc/rfc768.txt>

[RFC2119] Bradner, S., "Key words for use in RFCs to Indicate Requirement Levels", BCP 14, RFC 2119, March 1997, <http://www.ietf.org/rfc/rfc2119.txt>

1.2.2 Informative References

[IPX] Microsoft Corporation, "Internetwork Packet Exchange (IPX)", <http://msdn.microsoft.com/en-us/library/ms817906.aspx>

[MC-DPL4CS] Microsoft Corporation, "[DirectPlay 4 Protocol: Core and Service Providers Specification](#)", September 2007.

[MC-DPL8CS] Microsoft Corporation, "[DirectPlay 8 Protocol: Core and Service Providers Specification](#)", September 2007.

[MC-DPL8R] Microsoft Corporation, "[DirectPlay 8 Protocol: Reliable Specification](#)", September 2007.

[MC-DPLHP] Microsoft Corporation, "[DirectPlay 8 Protocol: Host and Port Enumeration Specification](#)", September 2007.

[MC-DPLNAT] Microsoft Corporation, "[DirectPlay 8 Protocol: NAT Locator Specification](#)", September 2007.

[MS-GLOS] Microsoft Corporation, "[Windows Protocols Master Glossary](#)", March 2007.

1.3 Overview

The DirectPlay DXDiag Usage Protocol is designed to handle the following two basic types of network messaging for networked gaming:

- Reliable versus not reliable messaging: This determines whether or not messages are guaranteed to be delivered to the target application in the event of packet loss.
- Sequential versus non-sequential messaging: This determines whether or not messages are received by the target application in the same order in which they are sent in the event of packet loss or incorrect ordering.

Games use messaging for a variety of purposes, each with different demands. To support the range of messaging requirements, the DirectPlay DXDiag Usage Protocol designates a message as belonging to one of four categories, depending on whether the message is reliable and/or sequential. The categories are specified by setting the **PACKET_COMMAND_RELIABLE** and **PACKET_COMMAND_SEQUENTIAL** flags in the **bCommand** field of the [TRANS_USERDATA_HEADER](#) packet header as follows:

Message category	Flags set
Reliable and Sequential	PACKET_COMMAND_RELIABLE and PACKET_COMMAND_SEQUENTIAL
Not reliable and Sequential	PACKET_COMMAND_SEQUENTIAL
Reliable and Non-sequential	PACKET_COMMAND_RELIABLE
Not reliable and Non-sequential	None

The DirectPlay DXDiag Usage Protocol enables optimizing of messaging strategy by assigning categories on a message-by-message basis.

Reliable packets are those that the upper layer considers important to retry when they are lost on the network. Packets not marked as reliable are for temporary messages that are not critical to operation and are not retried because they are replaced with subsequent messages. Sequential packets are those that have to be delivered according to the upper layer and have to wait until the gaps in the sequence due to packet loss are resolved. However, non-sequential packets can be delivered to the upper layer as they arrive.

1.3.1 How DXDiag Uses DirectPlay

DirectPlay DXDiag Usage Protocol packets are transported by means of **User Datagram Protocol (UDP)** (as specified in [\[RFC7681\]](#)) and **internetwork packet exchange [IPX]**. To facilitate transport over unreliable serial streams, such as those provided by direct connection **serial** and **modem** links, a message format with signatures and checksums is defined in section [2.2](#).

Enumeration packets are used for lightweight discovery of available **game sessions**, typically on a **local area network (LAN)**. The computer **hosting a DXDiag** game session listens for incoming enumeration queries from a remote computer and responds with enumeration replies. Upon receiving the response, the remote computer initiates a stateful connection to the hosting computer in order to participate in the game session.

In the DXDiag game session, an array of identifiers is contained in a **name table**. When a new **client** joins a session, the client receives a name table that lists all of the clients currently in the game session. When a client departs the game session, the identifier for that client is removed from the name table. The name table itself is kept current through the use of a version number.

The DirectPlay DXDiag Usage Protocol is a sliding window protocol that requires the receiver to acknowledge received UDP packets before more packets are transmitted. An **acknowledgment (ACK)** can be conveyed in one of two ways: either bundled within back traffic sent from the receiver, or, when no back traffic is flowing, sent from the receiver as a dataless **selective acknowledgment (SACK)** packet.

When the ACK is bundled within back traffic, fields within the header are used to indicate the sequence number of the next expected packet. This acknowledges that all packets with sequence numbers less than the specified number have been received correctly. If an ACK is not received within a specified amount of time, the original packet is resent with the same sequence number as was previously assigned.

Note The specified amount of time is derived from the current **round-trip time (RTT)** measured by previously acknowledged messages. An initial RTT measurement should also be taken from the [TRANS_COMMAND_CONNECT_ACCEPT](#) response to the [TRANS_COMMAND_CONNECT](#) or [TRANS_COMMAND_CONNECT_ACCEPT](#) packet sent during the initial handshake.

If the original sender specifies **poll packet (POLL)** (ACK now) in the packet header, the receiver must immediately acknowledge the packet when it arrives.

1.4 Relationship to Other Protocols

The DirectPlay DXDiag Usage Protocol has a dependency on UDP, or other similar datagram-oriented, connectionless protocol such as IPX, for the transport layer. As a native Microsoft Windows® protocol, no other protocols depend on the DirectPlay DXDiag Usage Protocol.

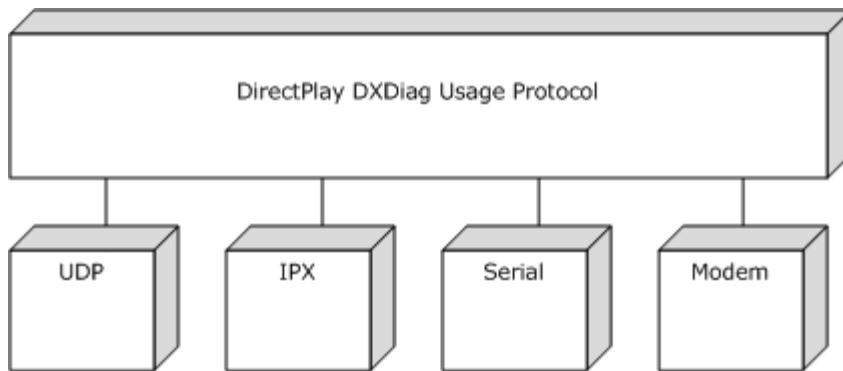


Figure 1: DirectPlay DXDiag Usage Protocol relationship to other protocols

1.5 Prerequisites/Preconditions

All multiple-byte fields used by the DirectPlay DXDiag Usage Protocol are in **little-endian** byte order, unless otherwise noted.

1.6 Applicability Statement

The DirectPlay DXDiag Usage Protocol was designed for multiplayer network gaming, but not for other uses of **peer-to-peer** messaging. It is not recommended for file transfer or for applications with robust security requirements that cannot provide them at other layers such as Internet Protocol security **IPsec**.

1.7 Versioning and Capability Negotiation

This specification covers versioning issues in the following areas:

- Protocol versions: The **DirectPlay protocol** has the following version levels for features:
 - Any version level between 0x00010000 and 0x00010004 implements the base features. The base features include all features described in this specification [MS-DPDX] except for signing and **coalescence**.
 - A version level of 0x00010005 implements the base features and adds support for coalescence.
 - A version level of 0x00010006 implements the base features, supports coalescence, and adds support for signing.

In the DirectPlay DXDiag Usage Protocol, the version level value is specified in the **dwCurrentProtocolVersion** field of the [TRANS_COMMAND_CONNECT](#) or [TRANS_COMMAND_CONNECT_ACCEPT](#) message.

Note DirectPlay DXDiag Usage Protocol version numbers advertise the availability of coalescence and signing, but they do not mandate the usage of these features. Even when the recipient indicates support for coalescence or signing, the implementation can choose not to use these features. <1>

- Capability negotiation: The DirectPlay DXDiag Usage Protocol inspects the value of the **dwCurrentProtocolVersion** field of the [TRANS_COMMAND_CONNECT](#) and [TRANS_COMMAND_CONNECT_ACCEPT](#) messages to identify the features that are supported by

the sender and receiver. In this respect, capability negotiation is provided in a manner similar to that available in the DirectPlay 8 Protocol, as described in [\[MC-DPL8R\]](#) section 1.7.

Note After the release of **DirectPlay 4**, earlier versions of **DirectPlay** were modified to resolve to DirectPlay 4, as described in [\[MC-DPL4CS\]](#). These versions include: [<2>](#)

- DirectPlay (1)
- DirectPlay 2
- DirectPlay 2A
- DirectPlay 3
- DirectPlay 3A

1.8 Vendor-Extensible Fields

None.

1.9 Standards Assignments

The DirectPlay DXDiag Usage Protocol uses one well-known UDP port assignment.

Parameter	Value	Reference
UDP port for DirectPlay	6073/udp	[IANAPORT]

For the purpose and use of this port assignment, see section [3](#).

2 Messages

This protocol references commonly used data types as defined in [\[MS-DTYP\]](#).

2.1 Transport

The DirectPlay DXDiag Usage Protocol uses UDP, internetwork packet exchange (IPX), serial, or modem as the transport. The DirectPlay DXDiag Usage Protocol can utilize either IPv4 or IPv6. The wire protocol format is the same for UDP and IPX. When a serial or modem link is used, there is an extra header, as specified in section [2.2.2](#).

2.2 Message Syntax

2.2.1 DPNID

The **DPNID** identifier describes the 32-bit DirectPlay network identifier for a **player** in a game session.

This type is declared as follows:

```
typedef DWORD DPNID, *PDPNID;
```

The **DPNID** for each player in the game session **MUST** be unique. The DPNID for a player is generated in several steps while adding the player to the game session.

1. The index of the entry in the name table that was used to create the player is stored in the lowest 20 bits of the DPNID. For example, when the index of the entry within the name table is 5, the index is stored as 0xNNN00005.
2. Along with the index, the version of the name table that existed when the entry was created is also stored. For example, when the name table version is 10 (0x0A), the index is stored as 0x00A00005.
3. This value is then XOR'd with the first 32 bits of the game session **instance GUID**. For example, if the instance GUID begins with 0xA1B2C3D4, the DPNID 0x00A00005 value would be XOR'd with 0xA1B2C3D4 to yield 0xA112C3D1.

Note The **DirectPlay host** uses the DPNID of a player to determine the location for this DPNID entry in the name table.

2.2.2 _MESSAGE_HEADER

When a serial or modem link is used, any of the packets listed in the table in section [2.2.3](#) are modified by prefixing them with the `_MESSAGE_HEADER` header. Exceptions to this are the packets [EnumQuery \(section 2.2.4\)](#) and [EnumResponse \(section 2.2.5\)](#), which use `_MESSAGE_HEADER` in place of the first 32 bits of their payloads.

For example, the following figure illustrates the contents of the [TRANS_USERDATA_DESTROY_PLAYER](#) packet when prefixed with the `_MESSAGE_HEADER` header.

0	1	2	3	4	5	6	7	8	9	1	0	1	2	3	4	5	6	7	8	9	2	0	1	2	3	4	5	6	7	8	9	3	0	1
Signature								Message Type								wMessageSize																		
wMessageCRC																wHeaderCRC																		
bCommand								bControl								bSeq								bNRcv										
dwSACKMask1 (Optional)																																		
dwSACKMask2 (Optional)																																		
dwSendMask1 (Optional)																																		
dwSendMask2 (Optional)																																		
payload (variable)																																		
...																																		
dwPacketType																																		
dpnidLeaving																																		
dwVersion																																		
dwVersionNotUsed																																		
dwDestroyReason																																		

Figure 2: TRANS_USERDATA_DESTROY_PLAYER packet prefixed with the _MESSAGE_HEADER header

0	1	2	3	4	5	6	7	8	9	1	0	1	2	3	4	5	6	7	8	9	2	0	1	2	3	4	5	6	7	8	9	3	0	1
Signature								MessageType								wMessageSize																		
wMessageCRC																wHeaderCRC																		

Signature (1 byte): An 8-bit serial signature for the packet. This MUST be set to the value 0xCC.

MessageType (1 byte): An 8-bit token that indicates the message type. The high 4 bits MUST be set to one of the following values.

Value	Meaning
0x20	This message contains an enumeration response. See section 2.2.5 .
0x40	This message contains a transport packet message following the header, and the low two bits MUST be ignored.
0x60	This message contains an enumeration query. See section 2.2.4 . The low two bits of the MessageType value in an enumeration query MUST be echoed in the low two bits of the enumeration response (a message with MessageType value of "0x20"). The sender MAY use any identifier value for the enumeration query. However, the

Value	Meaning
	sender SHOULD use this value to correlate queries with responses to calculate the round-trip time (RTT).

wMessageSize (2 bytes): A 16-bit integer that specifies the size, in bytes, of the message.

wMessageCRC (2 bytes): A 16-bit integer that provides the **CRC**, in bytes, for the message data, which is calculated using the standardized **CRC-16-IBM algorithm**.

wHeaderCRC (2 bytes): A 16-bit integer that provides the CRC, in bytes, for the message header, which is calculated using the standardized CRC-16-IBM algorithm.

2.2.3 DXDiag DirectPlay Packets

DirectPlay DXDiag Usage Protocol packets beginning with a zero byte are used to locate game sessions and to test network paths for **peer** connection attempts. Packets that have a nonzero first byte are part of an actively managed connection and are further divided into command, user data, and ACK packet types.

A packet's purpose is determined by a combination of its command values, extended operation code values, or flag values within the packet header. For user data transport packets, the first byte that follows the 4-byte header declares the type of information included in the packet.

The DirectPlay DXDiag Usage Protocol uses the following packets.

Packet	Description
EnumQuery	Enumerates hosting servers .
EnumResponse	Responds to an enumeration request.
SESS_PATH_TEST	Circumvents issues with network address translation (NAT) devices.
TRANS_USERDATA_HEADER	Transport packet header that contains command, control, and acknowledgment information.
TRANS_USERDATA_PLAYER_CONNECT_INFO	Sends client connection information to the host.
TRANS_USERDATA_SEND_SESSION_INFO	Relays game session information from the server to the client.
TRANS_USERDATA_ACK_SESSION_INFO	Sent from the client to the server to acknowledge the receipt of connection information.
TRANS_USERDATA_INSTRUCT_CONNECT	Instructs a client to connect to a designated client.
TRANS_USERDATA_NAMETABLE_VERSION	Specifies the version number of the name table.
TRANS_USERDATA_REQ_NAMETABLE_OP	Instructs a client to send name table information to the host.
TRANS_USERDATA_ACK_NAMETABLE_OP	Transmits name table information from a client to the host.
TRANS_USERDATA_RESYNC_VERSION	Requests that the name table version number be resynchronized to the current version number.

Packet	Description
TRANS_USERDATA_SEND_PLAYER_DNID	Sends a user identification number to another client.
TRANS_USERDATA_KEEPLIVE	Used by DXDiag to calculate an RTT.
TRANS_USERDATA_CONNECT_ATTEMPT_FAILED	Indicates that a peer in the game session is unable to connect to a new peer.
TRANS_USERDATA_CONNECT_FAILED	Indicates that a connection attempt failed.
TRANS_USERDATA_TERMINATE_SESSION	Instructs a client to disconnect from the game session.
TRANS_USERDATA_INSTRUCTED_CONNECT_FAILED	Indicates that a client was unable to carry out a server's instruction to connect to a new client.
TRANS_USERDATA_HOST_MIGRATE	Indicates that host migration is enabled and that the host server is terminating.
TRANS_USERDATA_HOST_MIGRATE_COMPLETE	Informs clients that the game session-hosting responsibilities have successfully migrated from the departing host.
TRANS_USERDATA_ADD_PLAYER	Instructs clients to add the specified client to the game session.
TRANS_USERDATA_DESTROY_PLAYER	Instructs clients to remove the specified user from the name table.
TRANS_USERDATA_END_OF_STREAM	Signals the disconnection of a user.
TRANS_USERDATA_REQ_INTEGRITY_CHECK	Requests that a host determine if a target client is still in the game session.
TRANS_USERDATA_INTEGRITY_CHECK	Requests that a client validate that it is still in the game session.
TRANS_USERDATA_INTEGRITY_CHECK_RESPONSE	Response from a client validating that it is still in the game session.
TRANS_USERDATA_SEND_MESSAGE	Transmits a chat message to all other users in the game session.
TRANS_COMMAND_CONNECT	Requests a connection.
TRANS_COMMAND_CONNECT_ACCEPT	Accepts a connection request.
TRANS_COMMAND_SACK	Acknowledges outstanding packets.

To reduce network traffic, several DirectPlay **TRANS_USERDATA** packets can be fused into a single packet using a special coalesced payload, as defined in section [2.2.17.1. TRANS_USERDATA](#) packets that have the PACKET_COMMAND_USER1 or PACKET_COMMAND_USER2 flag set in the **bCommand** field of the TRANS_USERDATA_HEADER packet header can be coalesced.

2.2.4 EnumQuery

The EnumQuery packet is used to enumerate hosting servers [MC-DPLHP]. The server replies with an EnumResponse to the client, where one EnumResponse message is sent for each game session that is running on the server. As a result, the client can receive multiple EnumResponse messages if more than one game session is running. The manner in which multiple available game sessions are handled, such as presenting a list to the user for selection, is left to the implementation.

Note When a serial or modem link is used, the MESSAGE HEADER (section 2.2.2) header replaces the first 32 bits of the EnumQuery payload (the LeadByte, CommandByte, and EnumPayload fields).

0	1	2	3	4	5	6	7	8	9	10	11	12	13	14	15	16	17	18	19	20	21	22	23	24	25	26	27	28	29	30	31
LeadByte								CommandByte								EnumPayload															
QueryType								ApplicationGUID (optional)																							
...																															
...																															
...																															
...								ApplicationPayload (variable)																							
...																															

LeadByte (1 byte): This field is 8 bits in length. It MUST be 0x00.

Note The first byte MUST be 0 for the message to be a valid EnumQuery message. When a message is received and the first byte is nonzero, the entire message MUST be passed through for processing as described in [MC-DPL8R].

CommandByte (1 byte): This field is 8 bits in length. It MUST be 0x02.

EnumPayload (2 bytes): This field is 16 bits in length. The EnumPayload is a value selected by the sender of the EnumQuery message that MUST be echoed in the EnumResponse message. It SHOULD be used to match EnumResponse messages to their corresponding EnumQuery.

QueryType (1 byte): This field is 8 bits in length. The value MUST be set to one of the following.

Value	Meaning
0x01	Indicates that this query contains an ApplicationGUID field. Only DirectPlay 8 server applications that are identified by the ApplicationGUID SHOULD respond to this EnumQuery. For more information about the GUID type, see [MS-DTYP] section 2.3.2. Applications SHOULD NOT respond to any EnumQuery messages where the QueryType field is 0x01 and the ApplicationGUID field does not match the server application GUID.

Value	Meaning
	Note For the DirectPlay DXDiag Usage Protocol, the value of QueryType SHOULD be set to "0x01".
0x02	Indicates that this EnumQuery message contains no ApplicationGUID field. All DirectPlay 8 server applications that receive this EnumQuery SHOULD respond to it.

ApplicationGUID (16 bytes): The Application GUID. This field MUST be set to 61EF80DA-691B-4247-9ADD-1C7BED2BC13E, which is the GUID for the **DXDiag application**.

ApplicationPayload (variable): The DirectPlay DXDiag Usage Protocol will never issue an application **payload**.

2.2.5 EnumResponse

The EnumResponse packet is sent from the game session server to the client in response to the [EnumQuery](#) packet that was sent from the client.

Note When a serial or modem link is used, the [MESSAGE HEADER \(section 2.2.2\)](#) header replaces the first 32 bits of the EnumResponse payload (the **LeadByte**, **CommandByte**, and **EnumPayload** fields).

0	1	2	3	4	5	6	7	8	9	10	11	12	13	14	15	16	17	18	19	20	21	22	23	24	25	26	27	28	29	30	31
LeadByte										CommandByte										EnumPayload											
ReplyOffset																															
ResponseSize																															
ApplicationDescSize																															
ApplicationDescFlags																															
MaxPlayers																															
CurrentPlayers																															
SessionNameOffset																															
SessionNameSize																															
PasswordOffset																															
PasswordSize																															
ReservedDataOffset																															

ReservedDataSize
ApplicationReservedDataOffset
ApplicationReservedDataSize
ApplicationInstanceGUID
...
...
...
ApplicationGUID
...
...
...
SessionName (variable)
...
Password (variable)
...
ReservedData (variable)
...
ApplicationReservedData (variable)
...
ApplicationData (variable)
...

LeadByte (1 byte): The leading zero byte for the packet. This field MUST be set to 0 to denote that this is a **session packet**.

CommandByte (1 byte): An 8-bit integer that indicates the command code for the message. This field MUST be set to 0x03 to denote that this is an EnumResponse message.

EnumPayload (2 bytes): A 16-bit integer value selected by the sender of the EnumQuery message.

An EnumResponse message is generated for every EnumQuery message received. The **EnumPayload** field in the EnumResponse message MUST match the **EnumPayload** field in the corresponding EnumQuery message.

ReplyOffset (4 bytes): A 32-bit integer that provides the offset in bytes from the end of **EnumPayload** to the start of the reply. If this field is 0, the packet does not contain a reply.

ResponseSize (4 bytes): A 32-bit integer that provides the size in bytes of the reply.

ApplicationDescSize (4 bytes): A 32-bit integer that provides the size of the application description.

ApplicationDescFlags (4 bytes): A 32-bit integer that provides the characteristics of the session specified as a combination of the following flags. <3>

Value	Meaning
DPNSESSION_MIGRATE_HOST 0x00000004	Host migration is allowed.
DPNSESSION_NODPNSVR 0x00000040	Not using DirectPlay Name Server (DPNSVR) (game session is not enumerable via well-known port 6073).
DPNSESSION_REQUIREPASSWORD 0x00000080	Password required to join game session.
DPNSESSION_NOENUMS 0x00000100	Enumerations are not allowed. This flag will never be set in an EnumResponse message.

MaxPlayers (4 bytes): A 32-bit integer that specifies the maximum number of clients allowed in the game session. A value of 0x00000000 denotes that an unlimited number of clients is allowed.

CurrentPlayers (4 bytes): A 32-bit integer that specifies the current number of clients in the game session.

SessionNameOffset (4 bytes): A 32-bit integer that specifies the offset in bytes from the end of **EnumPayload** to the start of the game session name.

SessionNameSize (4 bytes): A 32-bit integer that specifies the size in bytes of the game session name.

PasswordOffset (4 bytes): This field is 32 bits in length. A password is never used in the EnumResponse message; therefore, the **PasswordOffset** field will always be 0.

PasswordSize (4 bytes): This field is 32 bits in length. Passwords are not used in EnumResponse messages transmitted in the DirectPlay DxDiag Usage Protocol; therefore, the **PasswordSize** field will always be 0.

ReservedDataOffset (4 bytes): A 32-bit field that specifies the offset, in bytes, from the end of the **EnumPayload** field to the **ReservedData** field. Since the **ReservedData** field is never used, **ReservedDataOffset** will always be 0.

ReservedDataSize (4 bytes): A 32-bit field that specifies the size, in bytes, of the **ReservedData** field. Since the **ReservedData** field is never used, **ReservedDataSize** will always be 0.

ApplicationReservedDataOffset (4 bytes): The **ApplicationReservedData** field is not used by the DirectPlay DxDiag Usage Protocol, and therefore, the **ApplicationReservedDataOffset** field will always have a value of 0.

ApplicationReservedDataSize (4 bytes): The **ApplicationReservedData** field is not used by the DirectPlay DxDiag Usage Protocol, and therefore, the **ApplicationReservedDataSize** field will always have a value of 0.

ApplicationInstanceGUID (16 bytes): The instance GUID that identifies the game session.

ApplicationGUID (16 bytes): The application GUID. This field MUST be set to 61EF80DA-691B-4247-9ADD-1C7BED2BC13E, which is the GUID for the DXDiag application.

SessionName (variable): An array of **Unicode** characters that describes the game session name with the size specified by **SessionSize** and the offset from the beginning of the packet specified by **SessionOffset**.

Password (variable): The **EnumResponse** message will never contain a password as passwords are not utilized in the DirectPlay DxDiag Usage Protocol; therefore, this field is unused.

ReservedData (variable): This field was intended to be used for future extensions to the DirectPlay 8 Protocol, but was never used.

ApplicationReservedData (variable): This field is not used by the DirectPlay DxDiag Usage Protocol.

ApplicationData (variable): This field MUST be filled with zeroes on sending and MUST be ignored upon receipt.

2.2.6 SESS_PATH_TEST

The SESS_PATH_TEST packet is used to circumvent issues with NAT devices. SESS_PATH_TEST packets are sent only when IPv4 is the transport. Path test packets and NAT are described in [\[MC-DPLNAT\]](#).

0	1	2	3	4	5	6	7	8	9	10	11	12	13	14	15	16	17	18	19	20	21	22	23	24	25	26	27	28	29	30	31
bZero										bCommand						wMsgID															
Key																															
...																															

bZero (1 byte): The leading zero byte for the packet. This field MUST be set to 0 to denote that this is a session packet.

bCommand (1 byte): An 8-bit integer that provides the command code for the message. This field MUST be set to 0x05 to denote that this is a SESS_PATH_TEST message.

wMsgID (2 bytes): A 16-bit integer value used to uniquely identify an individual SESS_PATH_TEST message. This MAY be any value selected by the sender and SHOULD be ignored by the receiver. <4>

Key (8 bytes): A 64-bit integer that provides the unique key associated with the SESS_PATH_TEST message. For information about how this value is generated, see section 3.1.1.

2.2.7 TRANS_COMMAND_CONNECT

The TRANS_COMMAND_CONNECT packet is used to request a connection. The response is a [TRANS_COMMAND_CONNECT_ACCEPT](#) packet.

0	1	2	3	4	5	6	7	8	9	10	11	12	13	14	15	16	17	18	19	20	21	22	23	24	25	26	27	28	29	30	31
bCommand								bExtOpCode								bMsgID								bRspId							
dwCurrentProtocolVersion																															
dwSessID																															
tTimestamp																															

bCommand (1 byte): An 8-bit integer that provides the command code for the message. This field MUST be set to one of the following values.

Value	Meaning
0x80	Indicates that this message utilizes a command frame (CFRAME) .
0x88	Indicates that this message utilizes a CFRAME (0x80) and POLL (0x08) values, which specify that the sender requests immediate acknowledgment (ACK) from the receiver upon receipt of the message.

If any other value is specified for the **bCommand** field, the packet MUST be ignored.

bExtOpCode (1 byte): An 8-bit integer that provides the extended operation code for the message. This field MUST be set to 0x01 to denote that this message requests a connection.

bMsgID (1 byte): An 8-bit integer message identifier used to correlate the responses. The initial value SHOULD be 0 and SHOULD be incremented each time the connect packet is retried. The recipient MUST echo the value in the **bRspId** field when responding with a TRANS_COMMAND_CONNECT_ACCEPT message.

bRspId (1 byte): An 8-bit integer that MUST be set to 0 when sending and MUST be ignored on receipt.

dwCurrentProtocolVersion (4 bytes): The version number of the requestor's DirectPlay protocol, in little-endian byte order, where the upper 16 bits are considered a major version number and the lower 16 bits are considered a minor version number. The major version number MUST NOT be set to any value other than 0x0001. The minor version number

SHOULD<5> be set to 0x0000 to indicate support for the base features, but MAY be set to a value between 0x00010000 and 0x00010004, inclusive.

The recipient SHOULD be prepared to support older message formats used by earlier minor versions. The recipient MUST ignore this packet if it does not support older message formats.

The recipient SHOULD be prepared to receive minor version numbers higher than what it implements and supplies in its own TRANS_COMMAND_CONNECT or TRANS_COMMAND_CONNECT_ACCEPT message, but both sides MUST only use message formats compatible with the lower of their two version numbers.

Note While a receiver may indicate support for coalescence (version level of 0x00010005 or higher) and a sender may choose to use this feature when it is available by the receiver, the DirectPlay DXDiag Usage Protocol utilizes the coalescence feature on any **TRANS_USERDATA** messages except [TRANS_USERDATA_SEND_MESSAGE \(section 2.2.31\)](#). In addition, the signing feature (version level 0x00010006) will not be utilized by the DirectPlay DXDiag Usage Protocol even when the receiver indicates support for the signing feature.

Value	Meaning
0x00010000 – 0x00010004	Any protocol version number between 1.0 and 1.4 implements the base features.
0x00010005	Protocol version number 1.5 implements the base features, and adds support for coalescence. Note The coalescence feature is not used by the base implementation of the DirectPlay DXDiag Usage Protocol.
0x00010006	Protocol version number 1.6 implements the base features, supports coalescence, and adds support for signing. Note The signing feature is not used by the base implementation of the DirectPlay DXDiag Usage Protocol.

dwSessID (4 bytes): A 32-bit integer session identifier that is used to correlate the responses. The value is dependent upon the implementation and SHOULD be a random number that is not predictable. The value of **dwSessID** MUST NOT be 0 unless **dwCurrentProtocolVersion** indicates a minor version less than 0x0005; otherwise, the packet MUST be ignored. The value for **dwSessID** MUST remain the same when retrying the TRANS_COMMAND_CONNECT packet. The recipient MUST echo the value in **dwSessID** when responding; otherwise, the packet MUST be ignored.

tTimestamp (4 bytes): A 32-bit integer that provides the sender's computer system **tick count**. The value of the **tTimestamp** field SHOULD be ignored, but MAY be used to estimate the differences in local tick counts between a sender and receiver.

2.2.8 TRANS_COMMAND_CONNECT_ACCEPT

The TRANS_COMMAND_CONNECT_ACCEPT packet is used to accept a connection request.

0	1	2	3	4	5	6	7	8	9	10	11	12	13	14	15	16	17	18	19	20	21	22	23	24	25	26	27	28	29	30	31
bCommand								bExtOpCode								bMsgID								bRspId							

dwCurrentProtocolVersion
dwSessID
tTimestamp

bCommand (1 byte): An 8-bit integer that provides the command code for the message. This field **MUST** be set to one of the following values.

Value	Meaning
0x80	Indicates that this message utilizes a command frame (CFRAME).
0x88	Indicates that this message utilizes a CFRAME (0x80) and POLL (0x08) values, which specify that the sender requests immediate acknowledgment (ACK) from the receiver upon receipt of the message.

When the packet is used to accept a connection request, the CFRAME and POLL values **MUST** be set. When the packet is used to complete the connection handshake, the POLL value **MUST NOT** be set. If any other values are set the packet **MUST** be ignored.

bExtOpCode (1 byte): An 8-bit integer that provides the extended operation code for the message. This field **MUST** be set to 0x02 to denote that this message accepts a connection.

bMsgID (1 byte): An 8-bit integer that provides the identifier for the TRANS_COMMAND_CONNECT_ACCEPT message. The initial value **SHOULD** be 0 and **SHOULD** be incremented if the packet is retried.

bRspId (1 byte): An 8-bit integer response identifier. This field **MUST** be set to the value of the **bMsgID** field in the [TRANS_COMMAND_CONNECT \(section 2.2.7\)](#) or TRANS_COMMAND_CONNECT_ACCEPT message to which this is a response.

dwCurrentProtocolVersion (4 bytes): The version number of the requestor's DirectPlay protocol, in little-endian byte order, where the upper 16 bits are considered a major version number and the lower 16 bits are considered a minor version number. The major version number **MUST NOT** be set to any value other than 0x0001. The minor version number **SHOULD** [<6>](#) be set to 0x0000 to indicate support for the base features, but **MAY** be set to a value between 0x00010000 and 0x00010004, inclusive.

The recipient **SHOULD** be prepared to support older message formats used by earlier minor versions. The recipient **MUST** ignore this packet if it does not support older message formats.

The recipient **SHOULD** be prepared to receive minor version numbers higher than what it implements and supplies in its own TRANS_COMMAND_CONNECT or TRANS_COMMAND_CONNECT_ACCEPT message, but both sides **MUST** only use message formats compatible with the lower of their two version numbers.

Note While a receiver may indicate support for coalescence (version level of 0x00010005 or higher) and a sender may choose to use this feature when it is available by the receiver, the DirectPlay DXDiag Usage Protocol utilizes the coalescence feature on any **TRANS_USERDATA** messages except [TRANS_USERDATA_SEND_MESSAGE \(section 2.2.31\)](#). In addition, the signing feature (version level 0x00010006) will not be utilized by the DirectPlay DXDiag Usage Protocol, even when the receiver indicates support for the signing feature.

Value	Meaning
0x00010000 — 0x00010004	Any protocol version number between 1.0 and 1.4 implements the base features.
0x00010005	Protocol version number 1.5 implements the base features, and adds support for coalescence. Note The coalescence feature is not used by the base implementation of the DirectPlay DXDiag Usage Protocol.
0x00010006	Protocol version number 1.6 implements the base features, supports coalescence, and adds support for signing. Note The signing feature is not used by the base implementation of the DirectPlay DXDiag Usage Protocol.

dwSessID (4 bytes): A 32-bit integer session identifier. The value **MUST** be set to the value of **dwSessID** specified in the TRANS_COMMAND_CONNECT packet; otherwise, the packet **SHOULD** be ignored.

tTimestamp (4 bytes): A 32-bit integer that provides the sender's computer system tick count. The value of the **tTimestamp** field **SHOULD** be ignored, but **MAY** be used to estimate the differences in local tick counts between a sender and receiver.

2.2.9 TRANS_COMMAND_SACK

The TRANS_COMMAND_SACK packet is used to acknowledge outstanding packets. Packet ACK is typically bundled in all user data packets using the **bSeq** and **bNRcv** fields found in the [TRANS_USERDATA_HEADER](#). However, the TRANS_COMMAND_SACK packet is used in the following scenarios:

- A dedicated ACK is requested (that is, when the PACKET_COMMAND_POLL bit in the **bCommand** header field is set).
- No user data remains for further bundled acknowledgments.
- The [Delayed Acknowledgment Timer \(section 3.1.2.6\)](#) elapses.

0	1	2	3	4	5	6	7	8	9	10	11	12	13	14	15	16	17	18	19	20	21	22	23	24	25	26	27	28	29	30	31				
bCommand										bExtOpCode										bFlags						bRetry									
bNSeq										bNRcv										wPadding															
tTimestamp																																			
dwSACKMask1 (optional)																																			
dwSACKMask2 (optional)																																			
dwSendMask1 (optional)																																			

dwSendMask2 (optional)

bCommand (1 byte): An 8-bit integer that provides the command code for the message. This field MUST be set to one of the following values.

Value	Meaning
0x80	Indicates that this message utilizes a command frame (CFRAME).
0x88	Indicates that this message utilizes a CFRAME (0x80) and POLL (0x08) values, which specify that the sender requests immediate acknowledgment (ACK) from the receiver upon receipt of the message.

The CFRAME value MUST be set. The POLL value SHOULD NOT be set and SHOULD be ignored. If any other values are specified, the packet MUST be ignored.

bExtOpCode (1 byte): An 8-bit integer that provides the extended operation code for the message. This field MUST be set to 0x06 to denote that this message selectively acknowledges (SACK) outstanding packets.

bFlags (1 byte): An 8-bit integer that provides the status flags for the message. This field MUST be set to one or more of the following values.

Value	Meaning
SACK_FLAGS_RESPONSE 0x01	The bRetry field is valid.
SACK_FLAGS_SACK_MASK1 0x02	The low 32 bits of the SACK mask are present in dwSACKMask1 .
SACK_FLAGS_SACK_MASK2 0x04	The high 32 bits of the SACK mask are present in dwSACKMask2 .
SACK_FLAGS_SEND_MASK1 0x08	The low 32 bits of the send mask are present in dwSendMask1 .
SACK_FLAGS_SEND_MASK2 0x10	The high 32 bits of the send mask are present in dwSendMask2 .

If any of the mask bits are set, and there is no corresponding Mask **DWORD** present in the message, then this message SHOULD be ignored.

bRetry (1 byte): A Boolean that indicates if the last received packet was a retry. This value MUST be ignored if **SACK_FLAGS_RESPONSE** is not set. Otherwise, the value SHOULD be 0 if the last received **data frame (DFRAME)** for the connection was not marked as a retry; otherwise, it SHOULD be nonzero. Recipients MUST NOT require any particular bit (or bits) to be set in the nonzero case, only that at least one bit is set.

bNSeq (1 byte): SACK packets do not have sequence numbers of their own. This 8-bit integer represents the sequence number of the next DFRAME to send.

bNRcv (1 byte): An 8-bit integer that provides the expected sequence number of the next packet received. If the SACK_FLAGS_SACK_MASK1 flag is set, the **bNRcv** field is

supplemented with an additional **DWORD** bitmask field that selectively acknowledges frames with sequence numbers higher than **bNRcv**.

wPadding (2 bytes): A 16-bit integer field MUST be set to 0 when sending and ignored on receipt.

tTimestamp (4 bytes): A 32-bit integer that provides the sender's computer system tick count. The value of the **tTimestamp** field SHOULD be ignored, but MAY be used to estimate the differences in local tick counts between a sender and receiver.

dwSACKMask1 (4 bytes): A 32-bit integer that provides the optional low 32 bits of the SACK mask in little-endian byte order. The existence of this field in the packet is dependent on the **bFlags** field having **SACK_FLAGS_SACK_MASK1** set.

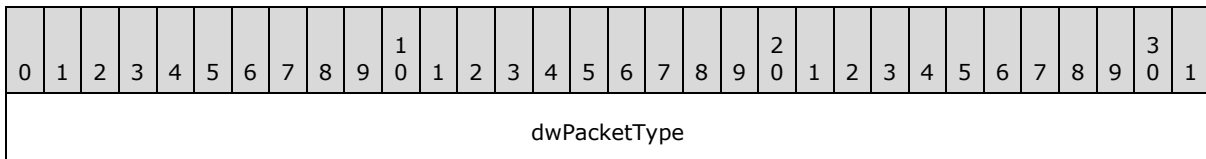
dwSACKMask2 (4 bytes): A 32-bit integer that provides the optional high 32 bits of the SACK mask in little-endian byte order. The existence of this field in the packet is dependent on the **bFlags** field having **SACK_FLAGS_SACK_MASK2** set.

dwSendMask1 (4 bytes): A 32-bit integer that provides the optional low 32 bits of the send mask in little-endian byte order. The existence of this field in the packet is dependent on the **bFlags** field having **SACK_FLAGS_SEND_MASK1** set.

dwSendMask2 (4 bytes): A 32-bit integer that provides the optional high 32 bits of the send mask in little-endian byte order. The existence of this field in the packet is dependent on the **bFlags** field having **SACK_FLAGS_SEND_MASK2** set.

2.2.10 TRANS_USERDATA_ACK_SESSION_INFO

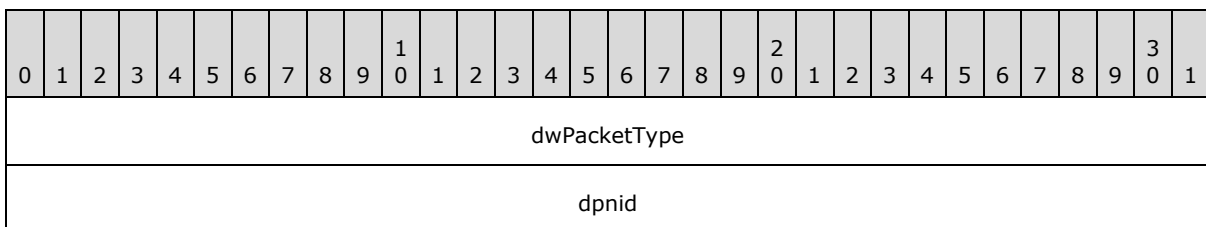
The TRANS_USERDATA_ACK_SESSION_INFO packet is sent from the client to the server to acknowledge the receipt of connection information. This packet contains no user data beyond the packet type field, and begins with a [TRANS_USERDATA_HEADER](#).



dwPacketType (4 bytes): A 32-bit integer that indicates the packet type. This field MUST be set to 0x000000C3 to denote that this message acknowledges the receipt of game session connection information.

2.2.11 TRANS_USERDATA_ADD_PLAYER

The TRANS_USERDATA_ADD_PLAYER packet instructs clients to add a specified client to the game session. This packet begins with a [TRANS_USERDATA_HEADER](#).



dpnidOwner
dwFlags
dwVersion
dwVersionNotUsed
dwDNETClientVersion
dwNameOffset
dwNameSize
dwDataOffset
dwDataSize
dwURLOffset
dwURLSize
url (variable)
...
data (variable)
...
name (variable)
...

dwPacketType (4 bytes): A 32-bit integer that indicates the packet type. This field MUST be set to 0x000000D0 to denote that this message instructs clients to add the specified client to the game session.

dpnid (4 bytes): A 32-bit integer that specifies the identifier of the client to add.

dpnidOwner (4 bytes): A 32-bit integer that specifies the identifier of the game session owner.

dwFlags (4 bytes): A 32-bit integer that contains the player flags. Entries are OR'd together. <7>

Value	Meaning
0x00000001	Player is the local player.
0x00000002	Player is the host.
0x00000100	Player is a client from a peer-to-peer game session.
0x00001000	Player is connecting.
0x00002000	Player is to make the member available for use.
0x00004000	Player to indicate disconnecting.
0x00010000	Player to indicate connection to an application.
0x00020000	Player to indicate that the application was given the created player.
0x00040000	Player to indicate that the game session owner needs to destroy a player.
0x00080000	Player to indicate that the player is in use.

dwVersion (4 bytes): A 32-bit integer that provides the current name table version number.

dwVersionNotUsed (4 bytes): This field MUST be set to 0 when sending and ignored on receipt.

dwDNETClientVersion (4 bytes): A 32-bit integer that provides the DirectPlay version of the client being added to the chat session. This field MUST be set to the appropriate DirectPlay version for the client. [<8>](#)

dwNameOffset (4 bytes): A 32-bit integer that provides the offset, in bytes, from the end of the **dwPacketType** field to the client name. If this field is 0, the packet does not include the client name.

dwNameSize (4 bytes): A 32-bit integer that provides the size, in bytes, of the name.

dwDataOffset (4 bytes): A 32-bit integer that provides the offset, in bytes, from the end of the **dwPacketType** field to the client data. If this field is 0, the packet does not include client data.

dwDataSize (4 bytes): A 32-bit integer that provides the size, in bytes, of the client data.

dwURLOffset (4 bytes): A 32-bit integer that provides the offset, in bytes, from the end of the **dwPacketType** field to the client URL. If this field is 0, the packet does not include the client URL.

dwURLSize (4 bytes): A 32-bit integer that provides the size, in bytes, of the connecting client's URL address.

url (variable): A variable length array of characters that contains the client URL, including the terminating null character. For more information about the structure of the URL, see [DN ADDRESSING URL \(section 2.2.34\)](#).

data (variable): A variable length array of characters that contains user data, including the terminating null character.

name (variable): A variable length array of Unicode characters that contains the client name, including the terminating null character.

2.2.12 TRANS_USERDATA_CONNECT_ATTEMPT_FAILED

The TRANS_USERDATA_CONNECT_ATTEMPT_FAILED packet is sent from the host to a connecting peer to indicate that an existing peer in the game session was unable to carry out the instruction from the host to connect to the new (connecting) peer. This packet begins with a [TRANS_USERDATA_HEADER](#).

0	1	2	3	4	5	6	7	8	9	10	11	12	13	14	15	16	17	18	19	20	21	22	23	24	25	26	27	28	29	30	31
dwPacketType																															
dpmID																															

dwPacketType (4 bytes): A 32-bit field that contains the packet type. The **dwPacketType** field MUST be set to 0x000000C8 (DN_MSG_INTERNAL_CONNECT_ATTEMPT_FAILED).

dpmID (4 bytes): A 32-bit field that contains the identifier for the existing peer in the game session that was unable to connect to the new peer.

2.2.13 TRANS_USERDATA_CONNECT_FAILED

The TRANS_USERDATA_CONNECT_FAILED packet indicates that a connection attempt failed. This packet begins with a [TRANS_USERDATA_HEADER](#).

0	1	2	3	4	5	6	7	8	9	10	11	12	13	14	15	16	17	18	19	20	21	22	23	24	25	26	27	28	29	30	31
dwPacketType																															
hResultCode																															
dwReplyOffset																															
dwReplySize																															
reply (variable)																															
...																															

dwPacketType (4 bytes): A 32-bit integer that indicates the packet type. This field MUST be set to 0x000000C5 to denote that this message indicates that a connection attempt failed.

hResultCode (4 bytes): A 32-bit integer that specifies the result code.

Value	Meaning
DPNERR_ALREADYCLOSING 0x80158050	Server/host is closing or host is migrating.
DPNERR_NOTHOST 0x80158530	Attempting to connect to an application that is not the host/server.
DPNERR_INVALIDINTERFACE 0x80158390	Nonclient attempting to connect to a server. Nonpeer attempting to connect to a host/peer.
DPNERR_INVALIDVERSION 0x80158460	Version passed in is not a valid DirectPlay version.
DPNERR_INVALIDINSTANCE 0x80158380	Instance GUID is not valid for this game session.
DPNERR_INVALIDAPPLICATION 0x80158300	Application GUID is not valid for this application.
DPNERR_INVALIDPASSWORD 0x80158410	Password passed in does not match what is expected.
DPNERR_HOSTREJECTEDCONNECTION 0x80158260	Application-specific failure for not allowing connection.
DPNERR_GENERIC 0x80004005	An undetermined error occurred inside a DirectX subsystem. This includes uncommon errors that cannot be generalized.

dwReplyOffset (4 bytes): A 32-bit integer that specifies the offset of the **reply** field from the end of the **dwPacketType** field to the **reply** field.

dwReplySize (4 bytes): A 32-bit integer that specifies the size in bytes of the data in the **reply** field.

reply (variable): A variable length array of characters that contains a reply message identifying the connection failure, including the terminating null character.

2.2.14 TRANS_USERDATA_TERMINATE_SESSION

The TRANS_USERDATA_TERMINATE_SESSION packet instructs the client to disconnect from the game session. This packet begins with a [TRANS_USERDATA_HEADER \(section 2.2.17\)](#).

0	1	2	3	4	5	6	7	8	9	10	11	12	13	14	15	16	17	18	19	20	21	22	23	24	25	26	27	28	29	30	31
dwPacketType																															
dwTerminateDataOffset																															
dwTerminateDataSize																															
TerminateData (variable)																															

...

dwPacketType (4 bytes): A 32-bit field that contains the packet type.

Value	Meaning
DN_MSG_INTERNAL_TERMINATE_SESSION 0x000000DF	Instructs the client to close and disconnect itself from the game session.

dwTerminateDataOffset (4 bytes): A 32-bit field that contains the offset from the end of **dwPacketType** for the data passed from the server/host application that describes why the client is being terminated.

dwTerminateDataSize (4 bytes): A 32-bit field that contains the size, in bytes, of the terminate data. If **dwTerminateDataOffset** is 0, **dwTerminateDataSize** SHOULD also be 0. If **dwTerminateDataOffset** is not 0, **dwTerminateDataSize** SHOULD also not be 0.

TerminateData (variable): A variable-length field that contains a byte array from the application that describes why the client is being terminated from the game session.

2.2.15 TRANS_USERDATA_DESTROY_PLAYER

The TRANS_USERDATA_DESTROY_PLAYER packet instructs the client to remove a specified user from the name table. This packet begins with a [TRANS_USERDATA_HEADER](#).

0	1	2	3	4	5	6	7	8	9	10	11	12	13	14	15	16	17	18	19	20	21	22	23	24	25	26	27	28	29	30	31
dwPacketType																															
dpnidLeaving																															
dwVersion																															
dwVersionNotUsed																															
dwDestroyReason																															

dwPacketType (4 bytes): A 32-bit integer that indicates the packet type. This field MUST be set to 0x000000D1 to denote that this message instructs the client to remove a specified user from the name table.

dpnidLeaving (4 bytes): A 32-bit integer that specifies the identifier of the client or server to remove from the name table.

dwVersion (4 bytes): A 32-bit integer that specifies the current name table version number.

dwVersionNotUsed (4 bytes): This field MUST be set to 0 when sending and ignored on receipt.

dwDestroyReason (4 bytes): A 32-bit integer that specifies the reason for terminating the specified client or server. This field MUST be set to one of the following values.

Value	Meaning
DPNDESTROYPLAYERREASON_NORMAL 0x00000001	The client or server is leaving.
DPNDESTROYPLAYERREASON_HOSTDESTROYEDPLAYER 0x00000004	The server removed the client.

2.2.16 TRANS_USERDATA_END_OF_STREAM

The TRANS_USERDATA_END_OF_STREAM packet is used to signal the disconnection of a user. This packet consists of only the [TRANS_USERDATA_HEADER](#).

0	1	2	3	4	5	6	7	8	9	10	11	12	13	14	15	16	17	18	19	20	21	22	23	24	25	26	27	28	29	30	31
bCommand								bControl								bSeq								bNRcv							

bCommand (1 byte): An 8-bit integer that specifies characteristics of the message. Two or more of the following flags can be combined to form complex values.

Value	Meaning
PACKET_COMMAND_DATA 0x01	The frame contains user data.
PACKET_COMMAND_RELIABLE 0x02	The frame SHOULD be delivered reliably and requires a packet acknowledgment.
PACKET_COMMAND_SEQUENTIAL 0x04	The frame SHOULD be indicated sequentially.
PACKET_COMMAND_POLL 0x08	The partner SHOULD acknowledge immediately.
PACKET_COMMAND_NEW_MSG 0x10	The DFRAME is first in the message.
PACKET_COMMAND_END_MSG 0x20	The DFRAME is last in the message.
PACKET_COMMAND_USER_1 0x40	The first user-controlled flag. (Indicates that the payload is an internal session management message.)
PACKET_COMMAND_USER_2 0x80	The second user-controlled flag. (Indicates that the payload is an internal session management message.)

bControl (1 byte): An 8-bit integer that identifies the packet. This field MUST be set to PACKET_CONTROL_END_STREAM (0x08) to specify that the packet is the last in the stream, and to indicate to disconnect.

bSeq (1 byte): An 8-bit integer that provides the sequence number of the packet.

bNRcv (1 byte): An 8-bit integer that provides the expected sequence number of the next packet received.

2.2.17 TRANS_USERDATA_HEADER

The TRANS_USERDATA_HEADER is a transport packet header that contains command, control, and ACK information. It is included with all **TRANS_USERDATA** DirectPlay packets.

0	1	2	3	4	5	6	7	8	9	10	11	12	13	14	15	16	17	18	19	20	21	22	23	24	25	26	27	28	29	30	31
bCommand								bControl								bSeq								bNRcv							
dwSACKMask1 (optional)																															
dwSACKMask2 (optional)																															
dwSendMask1 (optional)																															
dwSendMask2 (optional)																															
payload (variable)																															
...																															

bCommand (1 byte): An 8-bit integer that specifies characteristics of the message. Two or more of the following flags can be combined to form complex values.

Note The PACKET_COMMAND_USER1 flag SHOULD be set on all **TRANS_USERDATA** messages except the [TRANS_USERDATA_END_OF_STREAM](#), [TRANS_USERDATA_KEEPLIVE](#), and [TRANS_USERDATA_SEND_MESSAGE](#) messages.

Value	Meaning
PACKET_COMMAND_DATA 0x01	The frame contains user data.
PACKET_COMMAND_RELIABLE 0x02	The frame SHOULD be delivered reliably and requires a packet acknowledgment.
PACKET_COMMAND_SEQUENTIAL 0x04	The frame SHOULD be indicated sequentially.
PACKET_COMMAND_POLL 0x08	The partner SHOULD acknowledge immediately.
PACKET_COMMAND_NEW_MSG 0x10	The DFRAME is first in the message.
PACKET_COMMAND_END_MSG 0x20	The DFRAME is last in the message.
PACKET_COMMAND_USER_1 0x40	The first user-controlled flag. (Indicates that the payload is an internal session management message.)
PACKET_COMMAND_USER_2	The second user-controlled flag. (Indicates that the payload is an internal session management message.) The

Value	Meaning
0x80	PACKET_COMMAND_USER_2 flag is not used in the DirectPlay DXDiag Usage Protocol.

bControl (1 byte): An 8-bit integer that identifies the packet. Two or more of the following flags can be combined to form complex values.

Value	Meaning
PACKET_CONTROL_RETRY 0x01	Indicates if the frame is a retry for this sequence number.
PACKET_CONTROL_KEEPALIVE_OR_CORRELATE 0x02	For versions 0x00010005 and higher, this flag indicates that the frame is a keep-alive frame, and applies only to DirectX version 9.0 and later. When the version is lower than 0x00010005, this flag requests a dedicated acknowledgment from the receiver, and applies only to versions of DirectX prior to version 9.0. For information about versions, see section 1.7 .
PACKET_CONTROL_COALESCE 0x04	The packet contains multiple fused packets. This flag is not supported by DirectPlay version 8.0.
PACKET_CONTROL_END_STREAM 0x08	This is the last packet in the stream; also indicates to disconnect.
PACKET_CONTROL_SACK1 0x10	The low 32 bits of the SACK mask are present in dwSACKMask1 .
PACKET_CONTROL_SACK2 0x20	The high 32 bits of the SACK mask are present in dwSACKMask2 .
PACKET_CONTROL_SEND1 0x40	The low 32 bits of the cancel-send mask are present in dwSendMask1 .
PACKET_CONTROL_SEND2 0x80	The high 32 bits of the cancel-send mask are present in dwSendMask2 .
PACKET_CONTROL_VARIABLE_MASKS 0xF0	All four packet control mask bits are present.

bSeq (1 byte): An 8-bit integer that provides the sequence number of the packet.

bNRcv (1 byte): An 8-bit integer that provides the expected sequence number of the next packet received.

dwSACKMask1 (4 bytes): The optional low 32 bits of the SACK mask in little-endian byte order. The existence of this field in the packet is dependent on the **bFlags** field having **SACK_FLAGS_SACK_MASK1** set in the TRANS_COMMAND_HEADER packet.

dwSACKMask2 (4 bytes): The optional high 32 bits of the SACK mask in little-endian byte order. The existence of this field in the packet is dependent on **bFlags** field having **SACK_FLAGS_SACK_MASK2** set in the TRANS_COMMAND_HEADER packet.

dwSendMask1 (4 bytes): The optional low 32 bits of the send mask in little-endian byte order. The existence of this field in the packet is dependent on **bFlags** field having **SACK_FLAGS_SEND_MASK1** set in the TRANS_COMMAND_HEADER packet.

dwSendMask2 (4 bytes): The optional high 32 bits of the send mask in little-endian byte order. The existence of this field in the packet is dependent on **bFlags** field having **SACK_FLAGS_SEND_MASK2** set in the TRANS_COMMAND_HEADER packet.

payload (variable): A variable length integer that contains the consumer payload data for the packet. The payload size is the total UDP frame size minus the amount of data consumed by DFRAME headers up to this point. If the **PACKET_CONTROL_COALESCE** flag is set, the payload is not a single message or portion of a message, but is instead organized according to the coalesced payload format, as specified in section [2.2.17.1](#).

2.2.17.1 Coalesced Payloads

Coalesced payloads are a special form of payload within standard DFRAMEs. When the **PACKET_CONTROL_COALESCE** flag is set on the outer DFRAME header **bControl** field of the [TRANS_USERDATA_HEADER](#) packet, the payload is interpreted using this format. Frames with coalesced payloads MUST have the **PACKET_COMMAND_NEW_MSG** and **PACKET_COMMAND_END_MSG** flags set on the outer DFRAME header **bCommand** field.

Between 1 and 32 two-byte headers are placed at the beginning of the buffer. The buffer MUST NOT contain more than 32 coalesce headers. If there is an odd number of coalesce headers, two extra bytes of zero padding MUST be added at the end to align the subsequent data on a 32-bit boundary. The last non-padded coalesce header MUST have the **PACKET_COMMAND_END_COALESCE** flag set in its **bCommand** field.

Following the headers are 1 to 32 payloads where the sizes of each are indicated in the corresponding headers that were added in the same order. If the payload size is not a multiple of 32 bits, and it is not the last payload in the message, one to three bytes of zero padding MUST be added to align the beginning of the next payload on a 32-bit boundary. The sizes indicated in the coalesce headers MUST NOT include any padding so as to preserve the message size as originally sent. The receiver MUST infer alignment padding when processing the payloads, and SHOULD indicate the messages to the consumer using the unpadded size.

The following is an example of a standard DFRAME for a coalesced payload.

0	1	2	3	4	5	6	7	8	9	10	11	12	13	14	15	16	17	18	19	20	21	22	23	24	25	26	27	28	29	30	31								
<i>bSize 1</i>										<i>bCommand 1</i>										<i>bSize 2</i> <i>(optional)</i>										<i>bCommand 2</i> <i>(optional)</i>									
<i>bSize n-1 (optional)</i>										<i>bCommand n-1 (optional)</i>										<i>bSize n</i> <i>(optional)</i>										<i>bCommand n</i> <i>(optional)</i>									
<i>payload 1 (variable)</i>																																							
<i>payload 2 (optional, variable)</i>																																							

<i>payload n-1 (optional, variable)</i>
<i>payload n (optional, variable)</i>

In the preceding example, the following field types are represented.

bSize 1 through bSize n: The least significant 8 bits of the size of the coalesced payload. The value is combined with the optional **PACKET_COMMAND_COALESCE_BIG_1**, **PACKET_COMMAND_COALESCE_BIG_2**, and **PACKET_COMMAND_COALESCE_BIG_3** flags to determine the actual size of the payload. This MUST NOT be larger than what can fit in a standard DFRAME, including any size already used to store previous coalesce headers and payloads.

bCommand 1 through bCommand n: The command field for the coalesced message. The **PACKET_COMMAND_USER_1** flag MUST be set. All other flags are optional.

Value	Meaning
0x01	PACKET_COMMAND_END_COALESCE (Indicates that this is the final coalesced payload in the frame).
0x02	PACKET_COMMAND_RELIABLE (Specifies that the payload SHOULD be delivered reliably).
0x04	PACKET_COMMAND_SEQUENTIAL (Specifies that the payload SHOULD be indicated sequentially).
0x08	PACKET_COMMAND_COALESCE_BIG_1 (Represents bit 9 of the coalesced payload size).
0x10	PACKET_COMMAND_COALESCE_BIG_2 (Represents bit 10 of the coalesced payload size).
0x20	PACKET_COMMAND_COALESCE_BIG_3 (Represents bit 11 of the coalesced payload size, which is the most significant bit).
0x40	PACKET_COMMAND_USER_1 (Indicates that the payload is an internal session management message).

payload 1 through payload n: Contains the consumer payload data.

2.2.18 TRANS_USERDATA_HOST_MIGRATE

The TRANS_USERDATA_HOST_MIGRATE packet indicates that host migration is enabled, and the host server is terminating. This packet begins with a [TRANS_USERDATA_HEADER](#).

0	1	2	3	4	5	6	7	8	9	10	11	12	13	14	15	16	17	18	19	20	21	22	23	24	25	26	27	28	29	30	31
dwPacketType																															
dpnidOldHost																															

dpnidNewHost

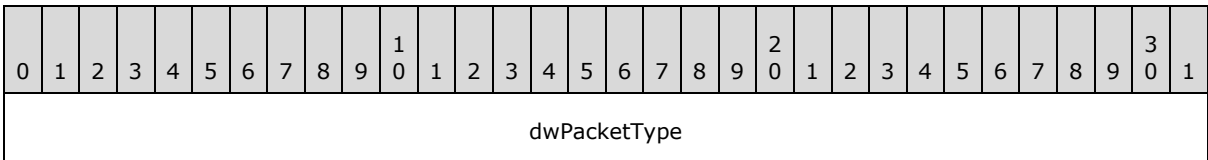
dwPacketType (4 bytes): A 32-bit integer that indicates the packet type. This field MUST be set to 0x000000CD to denote that this message indicates that the host migration procedure has started.

dpnidOldHost (4 bytes): A 32-bit integer that provides the identifier for the old host.

dpnidNewHost (4 bytes): A 32-bit integer that provides the identifier for the new host.

2.2.19 TRANS_USERDATA_HOST_MIGRATE_COMPLETE

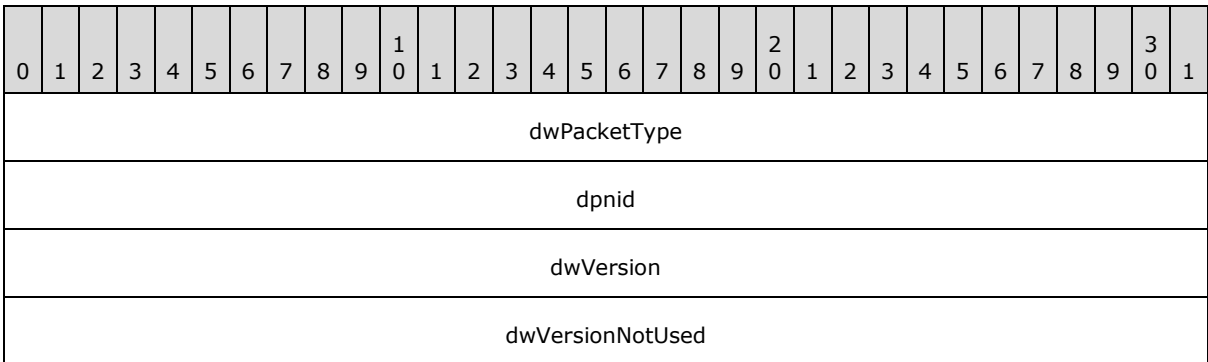
The TRANS_USERDATA_HOST_MIGRATE_COMPLETE packet informs clients that the game session-hosting responsibilities have successfully migrated from the departing old host. This packet begins with a [TRANS_USERDATA_HEADER](#) and contains no user data.



dwPacketType (4 bytes): A 32-bit integer that indicates the packet type. This field MUST be set to 0x000000CE to denote that this message informs clients that the game session-hosting responsibilities have successfully migrated from the departing old host.

2.2.20 TRANS_USERDATA_INSTRUCT_CONNECT

The TRANS_USERDATA_INSTRUCT_CONNECT packet instructs a client to connect to a designated client. This packet begins with a [TRANS_USERDATA_HEADER](#).



dwPacketType (4 bytes): A 32-bit integer that indicates the packet type. This field MUST be set to 0x000000C6 to denote that this message instructs a client to connect to a designated client.

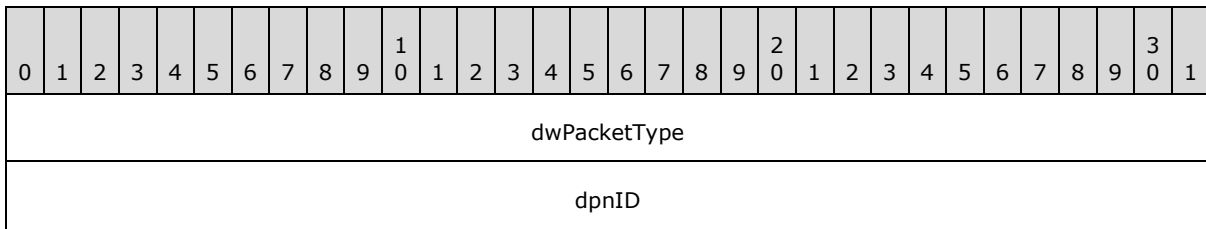
dpnid (4 bytes): A 32-bit integer that provides the identifier of the designated client to which the connection is being made.

dwVersion (4 bytes): A 32-bit integer that specifies the current version of the name table.

dwVersionNotUsed (4 bytes): This field MUST be set to 0 when sending and ignored on receipt.

2.2.21 TRANS_USERDATA_INSTRUCTED_CONNECT_FAILED

The TRANS_USERDATA_INSTRUCTED_CONNECT_FAILED packet indicates that a client was unable to carry out a server instruction to connect to a new client. This packet begins with a [TRANS_USERDATA_HEADER](#).



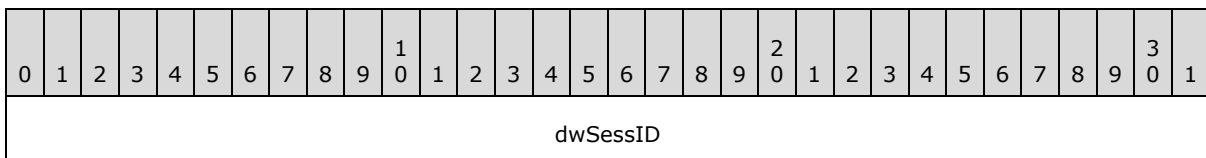
dwPacketType (4 bytes): A 32-bit integer that indicates the packet type. This field MUST be set to 0x000000C7 to denote that this message indicates that a client was unable to carry out a server instruction to connect to a new client.

dpnID (4 bytes): A 32-bit integer that provides the identifier for the client.

2.2.22 TRANS_USERDATA_KEEPALIVE

The TRANS_USERDATA_KEEPALIVE packet is used by DXDiag to calculate an RTT. This packet begins with a [TRANS_USERDATA_HEADER](#) packet header.

In the packet header, the PACKET_COMMAND_RELIABLE, PACKET_COMMAND_SEQUENTIAL, and PACKET_COMMAND_END_MSG flags MUST be set in the **bCommand** field. All other **bCommand** flags are optional. The **bControl** field MUST be set to PACKET_CONTROL_KEEPALIVE_OR_CORRELATE (0x02) to indicate that the frame is a keep-alive frame (DirectX version 9.0 and later), or that the sender requests a dedicated acknowledgment from the receiver (DirectX 8.0 and earlier). For information about DirectX versions, see section [1.7](#).



dwSessID (4 bytes): A 32-bit integer present only in TRANS_USERDATA_KEEPALIVE messages sent to version 0x00010006 recipients. This value MUST be set to the same **dwSessID** value specified in the [TRANS_COMMAND_CONNECT \(section 2.2.7\)](#) message associated with the connection; otherwise, the packet SHOULD be ignored.

2.2.23 TRANS_USERDATA_NAMETABLE_VERSION

The TRANS_USERDATA_NAMETABLE_VERSION packet specifies the version number of the name table. This packet begins with a [TRANS_USERDATA_HEADER](#).

0	1	2	3	4	5	6	7	8	9	10	11	12	13	14	15	16	17	18	19	20	21	22	23	24	25	26	27	28	29	30	31
dwPacketType																															
dwVersion																															
dwVersionNotUsed																															

dwPacketType (4 bytes): A 32-bit integer that indicates the packet type. This field MUST be set to 0x000000C9 to denote that this message specifies the version number of the name table.

dwVersion (4 bytes): A 32-bit integer that provides the current name table version number. The value of this field MUST NOT be 0.

dwVersionNotUsed (4 bytes): This field MUST be set to 0 when sending and ignored on receipt.

2.2.24 TRANS_USERDATA_REQ_NAMETABLE_OP

The [TRANS_USERDATA_REQ_NAMETABLE_OP](#) packet is sent from the new host to an existing peer in the game session that has a newer name table than that of the host. The host sends this message to request that the peer send back name table operations that have not yet been performed on the host. If no newer name table exists, this message is not sent. This message begins with a [TRANS_USERDATA_HEADER](#) packet header.

0	1	2	3	4	5	6	7	8	9	10	11	12	13	14	15	16	17	18	19	20	21	22	23	24	25	26	27	28	29	30	31
dwPacketType																															
dwVersion																															
dwVersionNotUsed																															

dwPacketType (4 bytes): A 32-bit field that indicates the packet type. This field MUST be set to 0x000000CB to denote that this message requests a name table from an existing peer in the game session that has a newer name table than that of the host, if any such name table exists.

dwVersion (4 bytes): A 32-bit field that contains the current name table version number of the host.

dwVersionNotUsed (4 bytes): This field MUST be set to 0 when sending and ignored on receipt.

2.2.25 TRANS_USERDATA_ACK_NAMETABLE_OP

The [TRANS_USERDATA_ACK_NAMETABLE_OP](#) packet is sent from the peer that is being queried for name table information back to the new host. The message will include all entries missing from the

name table of the new host. This message begins with a [TRANS_USERDATA_HEADER](#) packet header.

0	1	2	3	4	5	6	7	8	9	10	11	12	13	14	15	16	17	18	19	20	21	22	23	24	25	26	27	28	29	30	31
dwPacketType																															
dwNumEntries																															
dwMsgId																															
dwOpOffset																															
dwOpSize																															
op (variable)																															
...																															

dwPacketType (4 bytes): A 32-bit field that indicates the packet type. This field MUST be set to 0x000000CC to denote that this message is an acknowledgement of the new name table information from the peer to the new host.

dwNumEntries (4 bytes): A 32-bit field that specifies the number of name table entries included in the message. The **dwMsgId**, **dwOpOffset**, **dwOpSize**, and **op** fields are present in a TRANS_USERDATA_ACK_NAMETABLE_OP message **dwNumEntries** times.

dwMsgId (4 bytes): A 32-bit field that contains the internal message for the given name table entry. The internal message can be one of the following values.

Name	Value
TRANS_USERDATA_INSTRUCT_CONNECT	0x000000C6
TRANS_USERDATA_ADD_PLAYER	0x000000D0
TRANS_USERDATA_DESTROY_PLAYER	0x000000D1

dwOpOffset (4 bytes): A 32-bit field that contains the offset from the end of the **dwPacketType** field for the given name table operation buffer.

dwOpSize (4 bytes): A 32-bit field that contains the size for the given name table operation buffer.

op (variable): A variable length field that contains the portion of the packet originally associated with the name table operation, except for the **dwPacketType** field, as indicated by the **dwMsgId** field. Each operation buffer is atomic to itself. For example, an **op** value corresponding to a **dwMsgId** field value of 0x000000D1 would contain the **dpnidLeaving**, **dwVersion**, **dwVersionNotUsed**, and **dwDestroyReason** field information from an original TRANS_USERDATA_DESTROY_PLAYER packet.

2.2.26 TRANS_USERDATA_PLAYER_CONNECT_INFO

The TRANS_USERDATA_PLAYER_CONNECT_INFO packet is used to send client connection information to the host. This packet begins with a [TRANS_USERDATA_HEADER](#).

0	1	2	3	4	5	6	7	8	9	10	11	12	13	14	15	16	17	18	19	20	21	22	23	24	25	26	27	28	29	30	31
dwPacketType																															
dwFlags																															
dwDNETVersion																															
dwNameOffset																															
dwNameSize																															
dwDataOffset																															
dwDataSize																															
dwPasswordOffset																															
dwPasswordSize																															
dwConnectDataOffset																															
dwConnectDataSize																															
dwURLOffset																															
dwURLSize																															
guidInstance																															
...																															
...																															
...																															
guidApplication																															
...																															
...																															

...
dwAlternateAddressDataOffset
dwAlternateAddressDataSize
alternateAddressData (variable)
...
url (variable)
...
connectData (variable)
...
Password (variable)
...
data (variable)
...
name (variable)
...

dwPacketType (4 bytes): A 32-bit integer that indicates the packet type. This field **MUST** be set to 0x000000C1 to denote that this message sends client connection information to the host server.

dwFlags (4 bytes): A 32-bit integer that specifies the connect flags. This field **MUST** be set to 0x00000004 to indicate that the connecting application is a peer.

dwDNETVersion (4 bytes): A 32-bit integer that provides the DirectPlay version. This field **MUST** be set to the appropriate DirectPlay version. [<9>](#)

dwNameOffset (4 bytes): A 32-bit integer that provides the offset, in bytes, from the end of **dwPacketType** to the connecting client's **name** field. This value **MUST NOT** be 0.

dwNameSize (4 bytes): A 32-bit integer that specifies the size, in bytes, of the data in the **name** field. This value **MUST NOT** be 0.

dwDataOffset (4 bytes): A 32-bit integer that provides the offset, in bytes, from the end of **dwPacketType** to the **data** field. If **dwDataOffset** is 0, the packet does not include client data.

dwDataSize (4 bytes): A 32-bit integer that provides the size, in bytes, of the **data** field.

dwPasswordOffset (4 bytes): A 32-bit integer that provides the offset, in bytes, from the end of the **dwPacketType** field to the start of the **password**. When the packet does not include a **password**, this MUST be set to 0.

dwPasswordSize (4 bytes): A 32-bit integer that provides the size, in bytes, of the **password**. When the packet does not include a **password**, this MUST be set to 0.

dwConnectDataOffset (4 bytes): A 32-bit integer that provides the offset, in bytes, from the end of the **dwPacketType** field to the **connectData** field. If **dwConnectDataOffset** is 0, the packet does not include connection data.

dwConnectDataSize (4 bytes): A 32-bit integer that provides the size, in bytes, of the **connectData** field.

dwURLOffset (4 bytes): A 32-bit integer that provides the offset, in bytes, from the end of the **dwPacketType** field to the **url** field. If **dwURLOffset** is 0, the packet does not include the client URL.

dwURLSize (4 bytes): A 32-bit integer that provides the size, in bytes, of the **url** field.

guidInstance (16 bytes): The instance GUID of the game session. This MUST be the same GUID received in the [EnumResponse \(section 2.2.5\)](#) message; otherwise, the recipient MUST respond with a [TRANS_USERDATA_CONNECT_FAILED \(section 2.2.13\)](#) message.

guidApplication (16 bytes): The application GUID. This field MUST be set to 61EF80DA-691B-4247-9ADD-1C7BED2BC13E, which is the GUID for the DXDiag application. Otherwise, the recipient MUST respond with a TRANS_USERDATA_CONNECT_FAILED message.

dwAlternateAddressDataOffset (4 bytes): A 32-bit integer that provides the offset, in bytes, from the end of the **dwPacketType** field to the **alternateAddressData** field. If **dwAlternateAddressDataOffset** is 0, the packet does not include the alternate address data. This field is used in DirectPlay version 9.

dwAlternateAddressDataSize (4 bytes): A 32-bit integer that provides the size, in bytes, of the **alternateAddressData** field. This field is used in DirectPlay version 9.

alternateAddressData (variable): A variable length array that provides alternative address data that is used to connect the client. This field's position is determined by **dwAlternateAddressDataOffset** and the size stated in **dwAlternateAddressDataSize**. This field is used in DirectPlay version 9. The address that is passed in is formatted via the [DN_ALTERNATE_ADDRESS](#) structure format.

url (variable): A variable length, zero-terminated character array that contains the client URL. This field's position is determined by **dwURLOffset** and the size stated in **dwURLSize**.

connectData (variable): A variable length field that contains a byte array that provides the connection data. This field's position is determined by **dwConnectDataOffset** and the size stated in **dwConnectDataOffsetSize**.

Password (variable): A variable length, zero-terminated **wide character** array that contains the application password data. This field's position is determined by **dwPasswordOffset** and the size stated in **dwPasswordSize**. This data is passed in clear text to the protocol layer.

data (variable): A variable length, zero-terminated character array that contains the client data. This field's position is determined by **dwDataOffset** and the size stated in **dwDataSize**.

name (variable): A variable length, zero-terminated wide character array that contains the client name. This field's position is determined by the **dwNameOffset** field and the size stated in the **dwNameSize** field; both are fields in the [DN_NAMETABLE_ENTRY_INFO](#) structure. The last character indicated by **dwNameSize** SHOULD be treated as the terminating null character, even if the sender did not transmit it that way.

2.2.27 TRANS_USERDATA_REQ_INTEGRITY_CHECK

The TRANS_USERDATA_REQ_INTEGRITY_CHECK packet requests that a host determine if a target client is still in the game session. This packet begins with a [TRANS_USERDATA_HEADER](#).

0	1	2	3	4	5	6	7	8	9	10	11	12	13	14	15	16	17	18	19	20	21	22	23	24	25	26	27	28	29	30	31
dwPacketType																															
dwReqContext																															
dpnidTarget																															

dwPacketType (4 bytes): A 32-bit integer that indicates the packet type. This field MUST be set to 0x000000E2 to indicate that this is a request for the host to determine whether a target client is still in the game session.

dwReqContext (4 bytes): A 32-bit field that contains the context for the request operation. Values for the **dwReqContext** field are not used to convey information by the DirectPlay DXDiag Usage Protocol [MS-DPDX], but other implementers MAY choose to include this field in order to convey the context to the recipient.

dpnidTarget (4 bytes): A 32-bit integer that specifies the identifier of the selected target client, which the host validates.

2.2.28 TRANS_USERDATA_INTEGRITY_CHECK

The TRANS_USERDATA_INTEGRITY_CHECK packet is a request from a host to a client inquiring whether the client is still in the game session. This packet begins with a [TRANS_USERDATA_HEADER](#) ([section 2.2.17](#)).

0	1	2	3	4	5	6	7	8	9	10	11	12	13	14	15	16	17	18	19	20	21	22	23	24	25	26	27	28	29	30	31
dwPacketType																															
dpnidRequesting																															

dwPacketType (4 bytes): A 32-bit field that contains the packet type. This field MUST be set to 0x000000E3 to indicate that the host is requesting a client to verify that it is still in the game session.

dpnidRequesting (4 bytes): A 32-bit field that contains the identifier of the client requesting this validation. For more information, see [section 2.2.1](#).

2.2.29 TRANS_USERDATA_INTEGRITY_CHECK_RESPONSE

The TRANS_USERDATA_INTEGRITY_CHECK_RESPONSE packet is a response from a client to the host confirming that it is still in the game session. This packet begins with a [TRANS_USERDATA_HEADER \(section 2.2.17\)](#).

0	1	2	3	4	5	6	7	8	9	10	11	12	13	14	15	16	17	18	19	20	21	22	23	24	25	26	27	28	29	30	31
dwPacketType																															
dpnidRequesting																															

dwPacketType (4 bytes): A 32-bit field that contains the packet type. This MUST be set to 0x000000E4 to indicate that the client is responding to the host to confirm that it is still in the game session.

dpnidRequesting (4 bytes): A 32-bit field that contains the identifier of the client that requested the validation. For more information, see section [2.2.1](#).

2.2.30 TRANS_USERDATA_RESYNC_VERSION

The TRANS_USERDATA_RESYNC_VERSION packet is used to request that the name table version number be resynchronized to the current version number. This packet begins with a [TRANS_USERDATA_HEADER](#).

0	1	2	3	4	5	6	7	8	9	10	11	12	13	14	15	16	17	18	19	20	21	22	23	24	25	26	27	28	29	30	31
dwPacketType																															
dwVersion																															
dwVersionNotUsed																															

dwPacketType (4 bytes): A 32-bit integer that indicates the packet type. This field MUST be set to 0x000000CA to denote that this message requests that the protocol version number be resynchronized to the current version number.

dwVersion (4 bytes): A 32-bit integer that provides the current name table version number.

dwVersionNotUsed (4 bytes): This field MUST be set to 0 when sending and ignored on receipt.

2.2.31 TRANS_USERDATA_SEND_MESSAGE

The TRANS_USERDATA_SEND_MESSAGE packet transmits a chat message to all other users in a chat session. This packet begins with a [TRANS_USERDATA_HEADER](#) and does not contain a **dwPacketType** identification field.

0	1	2	3	4	5	6	7	8	9	10	11	12	13	14	15	16	17	18	19	20	21	22	23	24	25	26	27	28	29	30	31
nType																strChatString															
...																															
...																															
...																															
...																															
...																															
...																															
...																															
(strChatString cont'd for 92 rows)																															
...																															

nType (2 bytes): A 16-bit integer that identifies the type of chat message being transmitted. This field **MUST** be set to GAME_MSGID_CHAT (1).

strChatString (400 bytes): A Unicode-format chat message string. The application **SHOULD** send 200 Unicode characters. If the length of the actual chat string is less than 200 Unicode characters, then the value specified in **strChatString** **SHOULD** be padded. If the length of the chat string in the received packet is less than 200 Unicode characters, the receiver **SHOULD** send an acknowledgment for the message, and the receiver **SHOULD** discard the message.

2.2.32 TRANS_USERDATA_SEND_PLAYER_DNID

The TRANS_USERDATA_SEND_PLAYER_DNID packet is used to send a user identification number to another client. This packet begins with a [TRANS_USERDATA_HEADER](#).

0	1	2	3	4	5	6	7	8	9	10	11	12	13	14	15	16	17	18	19	20	21	22	23	24	25	26	27	28	29	30	31
dwPacketType																															
dpnID																															

dwPacketType (4 bytes): A 32-bit integer that indicates the packet type. This field **MUST** be set to 0x000000C4 to denote that this message sends a user identification number to another client.

dpnID (4 bytes): A 32-bit integer that provides the identifier of the client.

2.2.33 TRANS_USERDATA_SEND_SESSION_INFO

The TRANS_USERDATA_SEND_SESSION_INFO packet is used by the game session server to relay game session information to the client. This packet begins with a [TRANS_USERDATA_HEADER](#).

0	1	2	3	4	5	6	7	8	9	10	11	12	13	14	15	16	17	18	19	20	21	22	23	24	25	26	27	28	29	30	31
dwPacketType																															
dwReplyOffset																															
dwReplySize																															
dwSize																															
dwFlags																															
dwMaxPlayers																															
dwCurrentPlayers																															
dwSessionNameOffset																															
dwSessionNameSize																															
dwPasswordOffset																															
dwPasswordSize																															
dwReservedDataOffset																															
dwReservedDataSize																															
dwApplicationReservedDataOffset																															
dwApplicationReservedDataSize																															
guidInstance																															
...																															
...																															
...																															
applicationGUID																															

...
...
...
dpnid
dwVersion
dwVersionNotUsed
dwEntryCount
dwMembershipCount
DN_NAMETABLE_ENTRY_INFO (variable)
...
DN_NAMETABLE_MEMBERSHIP_INFO (variable)
...
URL (variable)
...
Data (variable)
...
name (variable)
...
ApplicationReservedData (variable)
...
ReservedData (variable)
...
Password (variable)

...
SessionName (variable)
...
reply (variable)
...

dwPacketType (4 bytes): A 32-bit integer that indicates the packet type. This field MUST be set to 0x000000C2 to denote that this message is used by the game session server to relay game session information to the client.

dwReplyOffset (4 bytes): A 32-bit integer that provides the offset, in bytes, from the end of the **dwPacketType** field to the **reply** field. If **dwReplyOffset** is 0, the packet does not include a reply.

dwReplySize (4 bytes): A 32-bit integer that provides the size, in bytes, of the **reply** field.

dwSize (4 bytes): A 32-bit integer that provides the size, in bytes, of the application description information.

dwFlags (4 bytes): A 32-bit integer that specifies the application flags. Entries are OR'd together. <10>

Value	Meaning
0x00000004	Host migration is allowed.
0x00000040	The DirectPlay enumeration server is not running.
0x00000080	Password is REQUIRED.
0x00000100	No enumerations are allowed from the game session.

dwMaxPlayers (4 bytes): A 32-bit integer that specifies the maximum number of clients allowed in the game session.

dwCurrentPlayers (4 bytes): A 32-bit integer that specifies the current number of clients in the game session.

dwSessionNameOffset (4 bytes): A 32-bit integer that provides the offset, in bytes, from the end of the **dwPacketType** field to the **sessionName** field. If **dwSessionNameOffset** is 0, the packet does not include a game session name.

dwSessionNameSize (4 bytes): A 32-bit integer that provides the size, in bytes, of the **sessionName** field.

dwPasswordOffset (4 bytes): A 32-bit integer that provides the offset, in bytes, from the end of the **dwPacketType** field to the start of the password. When the packet does not include a password, this field MUST be set to 0.

dwPasswordSize (4 bytes): A 32-bit integer that provides the size, in bytes, of the password. When the packet does not include a password, this field MUST be set to 0.

dwReservedDataOffset (4 bytes): A 32-bit integer that provides the offset, in bytes, from the end of the **dwPacketType** field to the **reservedData** field. If **dwReservedDataOffset** is 0, the packet does not include reserved data.

dwReservedDataSize (4 bytes): A 32-bit integer that provides the size, in bytes, of the **reservedData** field.

dwApplicationReservedDataOffset (4 bytes): A 32-bit integer that provides the offset, in bytes, from the end of the **dwPacketType** field to the **applicationReservedData** field. If **dwApplicationReservedDataOffset** is 0, the packet does not include application reserved data.

dwApplicationReservedDataSize (4 bytes): A 32-bit integer that provides the size, in bytes, of the **applicationReservedData** field.

guidInstance (16 bytes): The instance GUID that identifies the game session. This field MUST be set to the value specified in the **ApplicationInstanceGUID** field of the [EnumResponse](#) message.

applicationGUID (16 bytes): The application GUID. This field MUST be set to 61EF80DA-691B-4247-9ADD-1C7BED2BC13E, which is the GUID for the DXDiag application.

dpnid (4 bytes): A 32-bit integer that provides the identifier for the new client joining the game session. This value MUST be calculated as described in section [2.2.1](#).

dwVersion (4 bytes): A 32-bit integer that specifies the current name table version.

dwVersionNotUsed (4 bytes): This field MUST be set to 0 when sending and ignored on receipt.

dwEntryCount (4 bytes): A 32-bit integer that provides the number of entries in the name table.

dwMembershipCount (4 bytes): A 32-bit integer that provides the number of memberships in the name table.

DN_NAMETABLE_ENTRY_INFO (variable): A **dwEntryCount** size array of structures that provides information on a **name table entry**, as specified in section [2.2.33.1](#).

DN_NAMETABLE_MEMBERSHIP_INFO (variable): A **dwMembershipCount** size array of structures that provide information on a name table membership, as specified in section [2.2.33.2](#).

URL (variable): A variable-length zero-terminated character array that contains the URL of a user in the chat session. This field's position is determined by **dwURLOffset** and the size stated in **dwURLSize**; both are fields in the corresponding [DN_NAMETABLE_ENTRY_INFO](#) structure. There can be multiple instances of the **URL** field, with an upper limit specified by the **dwURLSize** field. For more information about the structure of the URL, see [DN ADDRESSING URL \(section 2.2.34\)](#).

Data (variable): A variable-length zero-terminated character array that contains the user data. This field's position is determined by **dwDataOffset** and the size stated in **dwDataSize**; both are fields in the corresponding [DN_NAMETABLE_ENTRY_INFO](#) structure. There can be multiple instances of the **Data** field with an upper limit specified by the **dwEntryCount** field.

name (variable): A variable-length zero-terminated wide character array that contains the client name. This field's position is determined by the **dwNameOffset** field and the size stated in the **dwNameSize** field; both are fields in the DN_NAMETABLE_ENTRY_INFO structure. The last character indicated by **dwNameSize** SHOULD be treated as the terminating null character, even if the sender did not transmit it that way.

Note There can be multiple instances of the **name** field with an upper limit specified by the **dwEntryCount** field.

ApplicationReservedData (variable): A variable-length zero-terminated character array that contains the application reserved data. This field's position is determined by **dwApplicationReservedDataOffset** and the size stated in **dwApplicationReservedDataSize**.

ReservedData (variable): A variable-length zero-terminated character array that contains the reserved data. This field's position is determined by **dwReservedDataOffset** and the size stated in **dwReservedDataSize**.

Password (variable): A variable length, zero-terminated wide character array that contains the application password data. This field's position is determined by **dwPasswordOffset** and the size stated in **dwPasswordSize**. This data is passed in clear text to the protocol layer.

SessionName (variable): A variable-length zero-terminated wide character array that contains the game session name. This field's position is determined by the **dwSessionNameOffset** field and the size stated in the **dwSessionNameSize** field. The last character indicated by **dwSessionNameSize** SHOULD be treated as the terminating null character, even if the sender did not transmit it that way. If **dwSessionNameSize** is not an even multiple of two, the last odd byte SHOULD be ignored.

reply (variable): A variable-length zero-terminated character array that contains the reply. This field's position is determined by **dwReplyOffset** and the size stated in **dwReplySize**.

2.2.33.1 DN_NAMETABLE_ENTRY_INFO

Information on a name table entry. The number of DN_NAMETABLE_ENTRY_INFO structures in this packet is specified in the **dwEntryCount** field.

0	1	2	3	4	5	6	7	8	9	10	11	12	13	14	15	16	17	18	19	20	21	22	23	24	25	26	27	28	29	30	31
dpnid																															
dpnidOwner																															
dwFlags																															
dwVersion																															
dwVersionNotUsed																															
dwDNETVersion																															

dwNameOffset
dwNameSize
dwDataOffset
dwDataSize
dwURLOffset
dwURLSize

dpnid (4 bytes): A 32-bit integer that specifies the DirectPlay identifier. This value MUST be calculated as described in section [2.2.1](#).

dpnidOwner (4 bytes): A 32-bit integer that provides the DirectPlay identifier for the owner.

dwFlags (4 bytes): A 32-bit integer that specifies the name table entry flags. Entries are OR'd together. [<11>](#)

Value	Meaning
0x00000001	The name table entry is the local player.
0x00000002	The name table entry is the host.
0x00000100	The name table entry is a peer. In peer-to-peer mode, the name table entry representing the host of the game session is also marked as a peer.
0x00001000	The name table entry is connecting.
0x00002000	The name table entry is to make the member available for use.
0x00004000	The name table entry to indicate disconnecting.
0x00010000	The name table entry to indicate connection to the application.
0x00020000	The name table entry to indicate that the application was given a created player.
0x00040000	The name table entry to indicate the need to destroy the player.
0x00080000	The name table entry to indicate that the player is in use.

dwVersion (4 bytes): A 32-bit integer that specifies the version number of the name table.

dwVersionNotUsed (4 bytes): This field MUST be set to 0 when sending and ignored on receipt.

dwDNETVersion (4 bytes): A 32-bit integer that provides the DirectPlay version. This field MUST be set to the appropriate DirectPlay version. [<12>](#)

dwNameOffset (4 bytes): A 32-bit integer that provides the offset, in bytes, from the end of the **dwPacketType** field to the **name** field. This value MUST NOT be 0.

dwNameSize (4 bytes): A 32-bit integer that provides the size, in bytes, of the **name** field. This value MUST NOT be 0.

dwDataOffset (4 bytes): A 32-bit integer that provides the offset, in bytes, from the end of the **dwPacketType** field to the **data** field.

dwDataSize (4 bytes): A 32-bit integer that provides the size, in bytes, of the **data** field.

dwURLOffset (4 bytes): A 32-bit integer that provides the offset, in bytes, from the end of the **dwPacketType** field to the **url** field.

dwURLSize (4 bytes): A 32-bit integer that provides the size, in bytes, of the **url** field.

2.2.33.2 DN_NAMETABLE_MEMBERSHIP_INFO

Information on a name table membership. The number of DN_NAMETABLE_MEMBERSHIP_INFO structures in this packet is specified in the **dwMembershipCount** field.

0	1	2	3	4	5	6	7	8	9	0	1	2	3	4	5	6	7	8	9	0	1	2	3	4	5	6	7	8	9	0	1
dpnidPlayer																															
dpnidGroup																															
dwVersion																															
dwVersionNotUsed																															

dpnidPlayer (4 bytes): A 32-bit integer that specifies the DirectPlay identifier for the user.

dpnidGroup (4 bytes): A 32-bit integer that provides the DirectPlay identifier for the group. The **dpnidGroup** field is not used by the DirectPlay DXDiag Usage Protocol.

dwVersion (4 bytes): A 32-bit integer that specifies the name table version.

dwVersionNotUsed (4 bytes): This field MUST be set to 0 when sending and ignored on receipt.

2.2.34 DN_ADDRESSING_URL

DirectPlay represents addresses for an application in the form of a URL. The structure of the URL is as follows:

x-directplay:/key1=value1;key2=value2;key3=value3;...

All configuration information for a provider is specified using "key=value" pairs separated by semicolons.

Note This is the opaque representation of a URL, where a single slash mark "/" is used as a scheme terminator, not double slash mark "//". The responsibility of data interpretation is placed on the consumer of the URL and nothing else can be assumed.

A DirectPlay URL has three components: the scheme, the scheme separator, and the URL data:

Scheme: The scheme used for a DirectPlay URL is "x-directplay".

Scheme separator: The scheme separator is simply the string "://" (a colon followed by a slash mark), implying that the data that follows is "opaque" and does not conform to the Internet standard. It MUST NOT be "://" (a colon followed by two slash marks) because the addition of the second slash mark implies an Internet standard for the remaining data, and the DirectPlay data does not conform to the Internet standard. If the second slash mark is detected, DirectPlay will flag the URL as invalid.

URL data: The URL data is a combination of "key=value" strings, where each string is separated by a semicolon.

There are no ordering requirements for the "key=value" pairs in the data, except for the "provider" key that is expected to be first to speed up parsing. All "key" identifiers SHOULD be lower-case and SHOULD NOT contain characters that are considered reserved, specifically: the semicolon (;), the slash mark (/), the question mark (?), the colon (:), the at sign (@), the equals sign (=), the ampersand (&), and the number sign (#). All "value" strings will be treated as case-sensitive to cover future uses.

The following table identifies the current "keys" and their valid "values".

Key	Value
applicationinstance	Text representation of a GUID for an application instance.
baud	Any valid baud rate (subject to potential validation). Used by modem and serial links.
device	Text representation of a device GUID.
flowcontrol	"NONE", "XONXOFF", "RTS", "DTR", or "RTSDTR". Used by modem and serial links.
hostname	Any valid hostname, used only for IP and Internetwork Packet Exchange (IPX).
parity	"NONE", "EVEN", "ODD", "MARK", or "SPACE". Used by modem and serial links.
phonenumber	Any valid telephone number. Used by modem links.
port	Any valid port address, used for IP and IPX, up to the maximum port value of 65535.
program	Text representation of the program GUID.
provider	Text representation of the service provider GUID.
stopbits	"1", "1.5", or "2". Used by modem and serial links.

Note Any unrecognized keys not identified in the previous table MUST be ignored. The number sign (#) token is used to indicate "user data" appended to the end of a URL. All characters that follow the number sign token in a URL MUST be ignored.

URL Examples

IP Address

```
x-directplay:/
provider=%7BEBFE7BA0-628D-11D2-AE0F-006097B01411%7D;
```



```
device=%7BIP_ADAPTER_GUID%7D;port=0000230034#IPUserData
```

IPX Address

```
x-directplay:/
provider=%7B53934290-628D-11D2-AE0F-006097B01411%7D;
device=%7BIPX_ADAPTER_GUID%7D;port=00230#IPXUserData
```

Serial Address

```
x-directplay:/
provider=%7B743B5D60-628D-11D2-AE0F-006097B01411%7D;
device=%7BCOM_PORT_GUID%7D;baud=57600;stopbits=1;parity=NONE;
flowcontrol=RTSDTR#SerialUserData
```

Modem Address

```
x-directplay:/
provider=%7B6D4A3650-628D-11D2-AE0F-006097B01411%7D;
device=%7BMODEM_DEVICE_GUID%7D;
phonenumber=555-1212#ModemUserData
```

2.2.35 DN_ALTERNATE_ADDRESS (IPv4)

In DirectPlay 9, the **DN_ALTERNATE_ADDRESS** structure provides additional options for Internet Protocol (IP) connectivity. The alternative addresses included in **DN_ALTERNATE_ADDRESS** are supplemental to the primary address specified in the **DN_ADDRESSING_URL** structure.

In the **DN_ALTERNATE_ADDRESS** structure, the **wPort** field is derived from its conversion into a 2-byte binary value, and the **dwAddrIn** field is derived from its conversion into a 4-byte binary value. Both of these fields are treated as single binary buffers, and, therefore, are not handled in **network byte order**. For example, a port value of 2302 would be converted into its 2-byte binary value of 00001000 11111110, and an **IPv4** transport address of 192.168.239.061 would be converted into its 4-byte binary **IN_ADDR (IPv4)** ([section 2.2.35.1](#)) value of 11000000 10101000 11101111 00111101.

0	1	2	3	4	5	6	7	8	9	10	11	12	13	14	15	16	17	18	19	20	21	22	23	24	25	26	27	28	29	30	31
bSize										bFamily										wPort											
dwAddrIn																															

bSize (1 byte): The size of this **DN_ALTERNATE_ADDRESS (IPv4)** structure excluding the size of this **bSize** field.

bFamily (1 byte): The address family for this **DN_ALTERNATE_ADDRESS (IPv4)** structure, which **MUST** be set to 0x02.

wPort (2 bytes): The port value for this **DN_ALTERNATE_ADDRESS (IPv4)** structure. This field is treated as a single buffer and is not specified in network byte order.

dwAddrIn (4 bytes): The address of the corresponding IN_ADDR (IPv4) structure for this **DN_ALTERNATE_ADDRESS (IPv4)** structure, which includes the IPv4 transport address.

2.2.35.1 IN_ADDR (IPv4)

The **IN_ADDR** structure specifies a 4-byte IPv4 transport address. The IPv4 transport address 192.168.239.061, when converted into a 4-byte binary **IN_ADDR** structure, would have the value 11000000 10101000 11101111 00111101.

0	1	2	3	4	5	6	7	8	9	10	11	12	13	14	15	16	17	18	19	20	21	22	23	24	25	26	27	28	29	30	31
b1								b2								b3								b4							

- b1 (1 byte):** First octet of the IPv4 network address.
- b2 (1 byte):** Second octet of the IPv4 network address.
- b3 (1 byte):** Third octet of the IPv4 network address.
- b4 (1 byte):** Fourth octet of the IPv4 network address.

2.2.36 DN_ALTERNATE_ADDRESS (IPv6)

The **DN_ALTERNATE_ADDRESS (IPv6)** structure is described in detail under the [DN_ALTERNATE_ADDRESS \(IPv4\) \(section 2.2.35\)](#) structure.

The following diagram represents the contents of the structure when it contains an **IPv6** alternative address. The **DN_ALTERNATE_ADDRESS (IPv4)** (section 2.2.35) structure demonstrates the contents of the same structure when it contains an IPv4 alternative address.

0	1	2	3	4	5	6	7	8	9	10	11	12	13	14	15	16	17	18	19	20	21	22	23	24	25	26	27	28	29	30	31
bSize								bFamily								wPort															
dwAddrIn																															
...																															
...																															
...																															

- bSize (1 byte):** The size of this **DN_ALTERNATE_ADDRESS (IPv6)** structure excluding the size of this **bSize** field.
- bFamily (1 byte):** The address family for this **DN_ALTERNATE_ADDRESS (IPv6)** structure, which **MUST** be set to 0x17.
- wPort (2 bytes):** The port value for this **DN_ALTERNATE_ADDRESS (IPv6)** structure specified in network byte order.

dwAddrIn (16 bytes): The address of the corresponding [IN6_ADDR \(IPv6\) \(section 2.2.36.1\)](#) structure for this **DN_ALTERNATE_ADDRESS (IPv6)** structure, which includes the IPv6 transport address.

2.2.36.1 IN6_ADDR (IPv6)

The **IN6_ADDR** structure specifies an IPv6 transport address whose bytes are in network byte order (**big-endian**). The IPv6 transport address 2001:0db8:85a3:0000:0000:8a2e:0370:7334, when converted into a 16-byte binary **IN6_ADDR** structure, would have the value 00100000 00000001 00001101 10111000 10000101 10100011 00000000 00000000 00000000 00000000 10001010 00101110 00000011 01110000 01110011 00110100.

0	1	2	3	4	5	6	7	8	9	10	11	12	13	14	15	16	17	18	19	20	21	22	23	24	25	26	27	28	29	30	31
b1				b2				b3				b4																			
b5				b6				b7				b8																			
b9				b10				b11				b12																			
b13				b14				b15				b16																			

- b1 (1 byte):** High byte of the first 4-digit hexadecimal portion of the IPv6 network address.
- b2 (1 byte):** Low byte of the first 4-digit hexadecimal portion of the IPv6 network address.
- b3 (1 byte):** High byte of the second 4-digit hexadecimal portion of the IPv6 network address.
- b4 (1 byte):** Low byte of the second 4-digit hexadecimal portion of the IPv6 network address.
- b5 (1 byte):** High byte of the third 4-digit hexadecimal portion of the IPv6 network address.
- b6 (1 byte):** Low byte of the third 4-digit hexadecimal portion of the IPv6 network address.
- b7 (1 byte):** High byte of the fourth 4-digit hexadecimal portion of the IPv6 network address.
- b8 (1 byte):** Low byte of the fourth 4-digit hexadecimal portion of the IPv6 network address.
- b9 (1 byte):** High byte of the fifth 4-digit hexadecimal portion of the IPv6 network address.
- b10 (1 byte):** Low byte of the fifth 4-digit hexadecimal portion of the IPv6 network address.
- b11 (1 byte):** High byte of the sixth 4-digit hexadecimal portion of the IPv6 network address.
- b12 (1 byte):** Low byte of the sixth 4-digit hexadecimal portion of the IPv6 network address.
- b13 (1 byte):** High byte of the seventh 4-digit hexadecimal portion of the IPv6 network address.
- b14 (1 byte):** Low byte of the seventh 4-digit hexadecimal portion of the IPv6 network address.
- b15 (1 byte):** High byte of the eighth 4-digit hexadecimal portion of the IPv6 network address.
- b16 (1 byte):** Low byte of the eighth 4-digit hexadecimal portion of the IPv6 network address.

2.2.37 DN_NAMETABLE

The name table is a concept used by DirectPlay to keep all participants in a game session in sync with the different actions that are being performed.

The name table is really a table of players and **groups** that are included in the game session. Each change to the state of the table is a versioned name table operation. Any participant in the game session who applies these operations will generate a view that is consistent with every other players' name table.

The following table identifies the name table operations that can be performed.

Action	Meaning
0x000000C6	TRANS_USERDATA_INSTRUCT_CONNECT (section 2.2.20)
0x000000D0	TRANS_USERDATA_ADD_PLAYER (section 2.2.11)
0x000000D1	TRANS_USERDATA_DESTROY_PLAYER (section 2.2.15)

The host/server is responsible for all name table operations, and all peers in the game session **MUST** maintain their own name table copy for use in host migration. All participants **MUST** also preserve a record of all operations that they have performed on the name table that have incremented the version number used during host migration. Host migration is described in [\[MC-DPL8CS\]](#) section 1.3.6.

The first operation in the name table is set to a version number of 1 and each subsequent operation increments the version by one. Every time the modulo 4 result of the new version number of the name table is equal to 0, each non-host peer **SHOULD** send a [TRANS_USERDATA_NAMETABLE_VERSION](#) message to the host reporting the current name table version of the peer. The host **SHOULD** track the versions reported by all peers and determine the oldest version number from all reports. When the oldest version number advances, the host **SHOULD** send a [TRANS_USERDATA_RESYNC_VERSION](#) message to all participants indicating the new oldest value. All participants **SHOULD** then release their records of all name table operations with versions older than this value, as they will no longer be needed during host migration.

2.2.38 PATHTESTKEYDATA

PATHTESTKEYDATA is a pseudo-structure that is hashed to generate 64-bit key values.

0	1	2	3	4	5	6	7	8	9	1	0	1	2	3	4	5	6	7	8	9	2	0	1	2	3	4	5	6	7	8	9	3	0	1
dpnidSender																																		
dpnidTarget																																		
guidApplication																																		
...																																		
...																																		

...
guidInstance
...
...
...

dpnidSender (4 bytes): A 32-bit DPNID value that identifies the sending player in little-endian byte order.

dpnidTarget (4 bytes): A 32-bit DPNID value that identifies the intended recipient player in little-endian byte order.

guidApplication (16 bytes): The 128-bit application GUID MUST be set to 61EF80DA-691B-4247-9ADD-1C7BED2BC13E, which is the GUID for the DXDiag application.

guidInstance (16 bytes): A 128-bit instance GUID for identifying a specific instance of a game session.

3 Protocol Details

3.1 Common Details

3.1.1 Abstract Data Model

This section describes a conceptual model of possible data organization that an implementation maintains to participate in the DirectPlay DXDiag Usage Protocol. The described organization is provided to facilitate the explanation of how the protocol behaves. This specification does not mandate that implementations adhere to this model as long as their external behavior is consistent with what is described in this specification.

Name Table: The list of computer systems participating in a DXDiag game session used both for local use and for transmission to enable peer-to-peer connectivity when additional participants join. This could also be considered the player list. It has a version number that monotonically increases with every operation that changes the name table content such as adding or removing a player.

Name Table Entry: The [DN_NAMETABLE_ENTRY_INFO](#) structure along with associated strings and data buffers for an individual participant in the DXDiag game session. These could be considered players.

Path Test Key: A digest of the [PATHTESTKEYDATA \(section 2.2.38\)](#) pseudo structure is created using the SHA-1 algorithm [\[FIPS180\]](#) and is used in the [SESS_PATH_TEST \(section 2.2.6\)](#) message sent during the peer connection process.

3.1.2 Timers

3.1.2.1 Connect Retry Timer

The Connect Retry Timer is used to retry [TRANS_COMMAND_CONNECT](#) and [TRANS_COMMAND_CONNECT_ACCEPT](#) messages if no response is received. Implementations MAY<13> retry as many times as necessary at any frequency. Recommended values are for the first retry to be 200 ms, doubling every subsequent retry with a cap at 5 seconds and 14 retries.

3.1.2.2 EnumQuery Retry Timer

The EnumQuery Retry Timer is used to retry [EnumQuery \(section 2.2.4\)](#) messages until the connection is fully established with all of the packets documented in section [3.1.5.1](#) for a single-client scenario or in section [3.1.5.2](#) for a multiple-client scenario.

The recommended frequency for retrying EnumQuery messages is every 1500 milliseconds until the connection is fully established with all of the packets documented in section [3.1.5.1](#) for a single-client scenario or in section [3.1.5.2](#) for a multiple-client scenario. The frequency can be adjusted according to application and network requirements.

3.1.2.3 Retry Timer

A packet is considered to be lost if one of the following occurs:

- An acknowledgement (ACK) is not received within a specified time-out period that is derived from the current round-trip time (RTT).
- The receiver explicitly indicates, through the use of a SACK mask, that it encountered a gap in the sequence where the packet would have been.

If a packet is lost, the implementation can resend the original packet with the same sequence number, provided the packet was marked as reliable. Otherwise, the implementation updates future packets to include a send mask to indicate that the data is never resent if a dropped packet is not marked as reliable.

Retry Timer tracking starts when a message that is prefixed with a [TRANS_USERDATA_HEADER](#) packet header is dropped and requires a message retry or when a send mask is sent.

- For the first retry attempt, recommended values are 2.5 RTT + the delayed ACK time-out (nominally 100 ms).
- For the second and third retry attempts, it is recommended to have a linear backoff.
- For the fourth through eighth retry attempts, it is recommended to have an exponential backoff.
- In addition, it is also recommended to have an overall cap at 5 seconds and 10 retries.

3.1.2.4 KeepAlive Retry Timer

The KeepAlive Retry Timer sends a minimal reliable packet to keep the connection alive when no traffic has been received from a peer for a specified time interval. The recommended time for inactivity is 25 seconds, and the granularity on the timer is four seconds. The interval time can be modified according to application and network requirements.

This timer SHOULD start immediately after the successful completion of a Keep Alive exchange as documented in section [3.1.5.1](#) for a single-client scenario or in section [3.1.5.2](#) for a multiple-client scenario.

When a particular peer is marked as disconnected, the timer SHOULD be stopped for that peer.

3.1.2.5 Path Test Retry Timer

The Path Test Retry Timer periodically resends [SESS_PATH_TEST \(section 2.2.6\)](#) messages to compensate for potential packet loss. The recommended time interval to retry is 375 milliseconds with a maximum of seven attempts. However, the attempts can be modified according to application and network requirements.

3.1.2.6 Delayed Acknowledgment Timer

The Delayed Acknowledgment Timer reduces the frequency of dedicated acknowledgments (SACKs). This timer is used to reduce the frequency of dedicated acknowledgments (ACKs) so that they can be piggybacked onto return traffic or multiple receives.

The recommended value for the Delayed Acknowledgment Timer is 20 milliseconds when acknowledging out-of-order or duplicate packets. This value can be modified according to application and network requirements.

3.1.3 Initialization

To use the [SESS_PATH_TEST \(section 2.2.6\)](#) message, the new client and the existing client MUST fill in a [PATHTESTKEYDATA \(section 2.2.38\)](#) pseudo-structure with the following:

- The **dpnidSender** field MUST be set to the DPNID of the new peer in **little-endian** byte order.
- The **dpnidTarget** field MUST be set to the DPNID of the existing peer in little-endian byte order.

- The **guidApplication** field MUST be set to the application GUID.
- The **guidInstance** field MUST be set to the game session instance GUID.

Both the new and existing clients MUST generate an SHA-1 digest of the PATHTESTKEYDATA binary data, as specified in [\[FIPS180\]](#), and use the first 64 bits of the output value as the Path Test key value key. For an existing client, this value MUST remain associated with the connection attempt that the client is performing until one of the following conditions is met:

- The attempt fails.
- A valid reply packet is received from the target address.
- The client receives a valid SESS_PATH_TEST message.

At the same time, the existing client MUST prepare to accept SESS_PATH_TEST messages in response to its instructed connection messages.

For a new client, this value MUST be used in the periodic transmission of SESS_PATH_TEST messages. The [Path Test Retry Timer \(section 3.1.2.5\)](#) MUST be initialized.

3.1.4 Higher-Layer Triggered Events

3.1.4.1 Sending a Chat Message

To send a chat message, a participant SHOULD send a [TRANS_USERDATA_SEND_MESSAGE](#) to the other participant. The [TRANS_USERDATA_HEADER](#) for the message SHOULD indicate that it is sequential and not reliable, that is, it SHOULD have the **PACKET_COMMAND_SEQUENTIAL** flag set, and SHOULD NOT have the **PACKET_COMMAND_RELIABLE** flag set in the **bCommand** field.

3.1.4.2 Disconnecting

When a participant requests to disconnect, the upper layer SHOULD initiate the sequence defined in section [3.1.5.3](#).

3.1.5 Processing Events and Sequencing Rules

The DXDiag application allows a client and server to create a chat session. All TRANS_USERDATA packets have their TRANS_USERDATA_HEADERS processed as specified in sections [3.1.5.8](#) and [3.1.5.9](#).

3.1.5.1 Client Joins a DirectPlay Session with No Other Clients

- The client sends an [EnumQuery \(section 2.2.4\)](#) session packet in search of a chat session.
- When processing an EnumQuery packet:
 - The server MUST validate the **CommandByte** field for a valid value as specified in section [2.2.4](#); otherwise, the packet SHOULD be ignored.
 - The server MUST validate the **QueryType** field for a valid value as specified in section [2.2.4](#); otherwise the packet SHOULD be ignored.
 - The server SHOULD NOT respond to the EnumQuery messages when the **QueryType** field is 0x01 and the **ApplicationGUID** field does not match the server application GUID.

- The server responds to the client with an [EnumResponse](#) session packet. These DirectPlay session packets are identifiable by a leading zero-byte tag.
- When processing an EnumResponse packet:
 - The client MUST validate the **CommandByte** field for a valid value as specified in section [2.2.5](#); otherwise, the packet SHOULD be ignored.
 - The client MUST match the value of the **EnumPayload** field of the EnumResponse packet with the **EnumPayload** field values of EnumQuery messages that were previously sent. Otherwise, the EnumQuery message SHOULD be retried by the client.
- The client requests a connection using a [TRANS_COMMAND_CONNECT](#) packet.
- When processing a TRANS_COMMAND_CONNECT packet:
 - If the source address corresponds to an existing, fully established connection it SHOULD be ignored.
 - If the source address is from an earlier received inbound connection that has not completed the connection handshake process and the value of the **dwSessID** field matches the previously received TRANS_COMMAND_CONNECT, then a [TRANS_COMMAND_CONNECT_ACCEPT \(section 2.2.8\)](#) message SHOULD be sent; otherwise, the packet SHOULD be ignored.
 - If the source address is from a previously established outbound connection that has not completed the connection handshake process, the packet SHOULD be ignored.
 - If the recipient is not allowing connections, the packet MUST be ignored.
 - If the source address does not correspond to any existing connection, it SHOULD be treated as a new connection attempt and the **bExtOpcode** field MUST be validated as described in section [2.2.7](#).
 - If the validation succeeds, a TRANS_COMMAND_CONNECT_ACCEPT packet SHOULD be sent in response; otherwise, the packet MUST be ignored.
- When processing a TRANS_COMMAND_CONNECT_ACCEPT packet:
 - The source address SHOULD be verified. If the address does not correspond to one with a partially or fully established connection, it SHOULD be ignored.
 - If the source address matches that of a previously initiated outbound connection that has not completed the connection handshake process, then validation checks SHOULD be performed as described.
 - If the **bExtOpcode** field does not have a valid value, the packet MUST be ignored.
 - If the **bCommand** field is set to 0x80, then the TRANS_COMMAND_CONNECT_ACCEPT acknowledge packet SHOULD NOT be sent.
 - The **dwSessID** field MUST match the one previously sent in the TRANS_COMMAND_CONNECT packet and the **bCommand** field MUST have the POLL value set.
- The client issues a TRANS_COMMAND_CONNECT_ACCEPT packet to acknowledge the connection.
- When processing a TRANS_COMMAND_CONNECT_ACCEPT acknowledge packet:

- The source address SHOULD be verified. If the address does not correspond to one with a partially or fully established connection, it SHOULD be ignored.
- If the source address matches that of a previously initiated outbound connection that has not completed the connection handshake process, then validation checks SHOULD be performed as described in the following steps.
 - If the **bExtOpcode** field does not have a valid value, the packet MUST be ignored.
 - If the **bCommand** field is set to 0x88, the [Connect Retry Timer](#) SHOULD be initiated as described in section [3.1.2.1](#).
 - The **dwSessID** field MUST match that of the previously sent TRANS_COMMAND_CONNECT_ACCEPT packet.
 - The **bCommand** field MUST NOT have the POLL value set.
- The server and client exchange [TRANS_USERDATA_KEEPALIVE](#) request packets.
- The client sends user information in a [TRANS_USERDATA_PLAYER_CONNECT_INFO](#) packet. The client can send this packet either in between the keep-alive exchange or after the keep-alive exchange has completed.
- If the TRANS_USERDATA_PLAYER_CONNECT_INFO packet fails validation, the server sends a [TRANS_USERDATA_CONNECT_FAILED](#) packet and the connection attempt is terminated with a [TRANS_USERDATA_END_OF_STREAM](#) packet from the server.
- The server sends session information in a [TRANS_USERDATA_SEND_SESSION_INFO](#) packet.
- The client MUST send a [TRANS_USERDATA_ACK_SESSION_INFO](#) to the server.
- The server sends a [TRANS_USERDATA_INSTRUCT_CONNECT](#) to the client to instruct it to form a connection.
- The client responds with a [TRANS_USERDATA_NAMETABLE_VERSION](#) packet.
- The server sends a [TRANS_USERDATA_RESYNC_VERSION](#) packet.
- The client acknowledges it by sending a [TRANS_COMMAND_SACK](#) packet.
- When processing a TRANS_COMMAND_SACK packet:
 - The source address SHOULD be verified. If the address does not correspond to one with a fully established connection, it MUST be ignored.

3.1.5.2 Client Joins a DirectPlay Session with Multiple Other Clients

- The client sends an [EnumQuery](#) session packet in search of a chat session. The processing rules for the EnumQuery packet are specified in section [3.1.5.1](#).
- The server responds to the client with an [EnumResponse](#) session packet. These DirectPlay session packets are identifiable by a leading zero-byte tag. The processing rules for the EnumResponse packet are specified in section [3.1.5.1](#).
- The client requests a connection using a [TRANS_COMMAND_CONNECT](#) packet. The processing rules for the TRANS_COMMAND_CONNECT packet are specified in section [3.1.5.1](#).

- The server responds with a [TRANS_COMMAND_CONNECT_ACCEPT](#) packet. The processing rules for the TRANS_COMMAND_CONNECT_ACCEPT packet are specified in section [3.1.5.1](#).
- The client issues a TRANS_COMMAND_CONNECT_ACCEPT packet to acknowledge the connection. The processing rules for the TRANS_COMMAND_CONNECT_ACCEPT acknowledge packet are specified in section [3.1.5.1](#).
- The server and client exchange [TRANS_USERDATA_KEEPALIVE](#) request packets.
- The client sends user information in a [TRANS_USERDATA_PLAYER_CONNECT_INFO](#) packet.
- If the TRANS_USERDATA_PLAYER_CONNECT_INFO packet fails validation, the server sends a [TRANS_USERDATA_CONNECT_FAILED](#) packet and the connection attempt is terminated with a [TRANS_USERDATA_END_OF_STREAM](#) packet from the server.
- The server, after receiving the TRANS_USERDATA_PLAYER_CONNECT_INFO packet, alerts existing clients to the existence of the new client by sending a [TRANS_USERDATA_ADD_PLAYER](#) packet.
- The server sends a [TRANS_USERDATA_SEND_SESSION_INFO](#) packet to the new client.
- The new client tests the network path to the existing clients with [SESS_PATH_TEST](#) packets.
- When processing a SESS_PATH_TEST packet:
 - The peer MUST search for outstanding [TRANS_USERDATA_INSTRUCT_CONNECT](#) and TRANS_USERDATA_ADD_PLAYER messages that have a matching key value as specified in section [3.1.3](#).
 - If a matching key is found and the connect attempt has not yet initiated to the intended target source address and port, the connect target SHOULD be modified to use the source address and port of the SESS_PATH_TEST packet.
 - If no connect attempt is associated with a matching key value, the existing peer MUST ignore the SESS_PATH_TEST packet.
 - If the recipient is the new client or the host, and therefore not intending to make any connection attempts, the SESS_PATH_TEST packet MUST be ignored.
- The new client sends a [TRANS_USERDATA_ACK_SESSION_INFO](#) to acknowledge the game session information previously received from the server.
- The server sends a TRANS_USERDATA_INSTRUCT_CONNECT packet to all clients (both existing and the new client) to instruct them to connect.
- If an existing client cannot connect to the new client, the existing client responds with a [TRANS_USERDATA_INSTRUCTED_CONNECT_FAILED](#) user data packet, and the connection attempt to the new client is canceled.
 - The server sends a [TRANS_USERDATA_CONNECT_ATTEMPT_FAILED](#) packet to the new client.
 - The server then sends a [TRANS_USERDATA_DESTROY_PLAYER](#) packet to the existing client, instructing the existing client to remove the new client from the name table.
- Otherwise, each client initiates the connection with the new client using a TRANS_COMMAND_CONNECT packet.
- The new client responds with a TRANS_COMMAND_CONNECT_ACCEPT packet.

- Each existing client acknowledges the connection with a [TRANS_COMMAND_CONNECT_ACCEPT](#) packet.
- The new client and each existing client exchange [TRANS_USERDATA_KEEPALIVE](#) packets, and the existing client transmits its user identifier in a [TRANS_USERDATA_SEND_PLAYER_DNID](#) packet to the new client.
- Finally, all clients acknowledge the game session server and each other using [TRANS_COMMAND_SACK](#) packets. The processing rules for the [TRANS_COMMAND_SACK](#) packet are specified in section [3.1.5.1](#).

3.1.5.3 Client Disconnects from Chat Session

When a client disconnects, the server makes an announcement to remaining clients, and then the departing client disconnects.

- The departing client issues a [TRANS_USERDATA_END_OF_STREAM](#) packet to the server and the other existing clients in the chat session. A [TRANS_USERDATA_END_OF_STREAM](#) message SHOULD be a separate packet without a payload; however, it MAY be the final queued data packet. After sending the [TRANS_USERDATA_END_OF_STREAM](#) message, the departing client MUST NOT send additional DFRAMES other than retries. The client MUST be prepared to continue receiving [TRANS_COMMAND_SACK](#) packets until it receives the [TRANS_USERDATA_END_OF_STREAM](#) from the server and other existing clients in the DXDiag chat session.
- The server and each existing client respond with four [TRANS_COMMAND_SACK](#) packets and a [TRANS_USERDATA_END_OF_STREAM](#) packet (in any order).
- The departing client returns four [TRANS_COMMAND_SACK](#) packets to the server and each existing client before disconnecting.
- If other clients are present in the game session, the server sends each one a [TRANS_USERDATA_DESTROY_PLAYER](#) packet to remove the departing client from their name table. This can happen before the server receives the final [TRANS_COMMAND_SACK](#) packet from the departing client.
- Each remaining client sends the server a [TRANS_USERDATA_REQ_INTEGRITY_CHECK](#) and [TRANS_COMMAND_SACK](#) packet to acknowledge the removal of the departed client.

3.1.5.4 Server Disconnects from Chat Session

A server can leave without destroying the chat session. The DirectPlay DXDiag Usage Protocol allows hosting to migrate to another member currently in the game session. [<14>](#)

- The hosting migration begins with the server sending a [TRANS_USERDATA_END_OF_STREAM](#) packet to all clients in the game session.
- Each client responds with four [TRANS_COMMAND_SACK](#) packets and a [TRANS_USERDATA_END_OF_STREAM](#) packet (in any order).
- The server sends four [TRANS_COMMAND_SACK](#) packets to each client, and disconnects.
- If other clients are present in the game session, the client that has been in the game session the longest becomes the new server and contacts each client with a [TRANS_USERDATA_HOST_MIGRATE](#) user data packet.

- Each client sends a [TRANS_USERDATA_NAMETABLE_VERSION](#) user data packet to the new server.
- If the name table of any client is older than the name table of the new server, the new server ends the migration sequence for that client with [TRANS_USERDATA_HOST_MIGRATE_COMPLETE](#) and [TRANS_USERDATA_DESTROY_PLAYER](#) packets, in any order. The [TRANS_USERDATA_DESTROY_PLAYER](#) packet identifies the previous host to remove from the client game session list.
- Otherwise, if the new server determines that there is a client with a newer name table, the new server will request entries from the client with the newer name table that are not contained within the name table of the host, using the [TRANS_USERDATA_REQ_NAMETABLE_OP](#) packet.
 - The client responds to the host with a [TRANS_USERDATA_ACK_NAMETABLE_OP](#) packet containing the missing entries.
- The new server sends a [TRANS_USERDATA_RESYNC_VERSION](#) packet to all clients to get every participant in sync.
- The server sends a [TRANS_USERDATA_HOST_MIGRATE_COMPLETE](#) packet to all connected peers.

3.1.5.5 Client Is Forcefully Removed from Session

A server can purposefully remove a client from the game session.

- The server issues a [TRANS_USERDATA_TERMINATE_SESSION \(section 2.2.14\)](#) packet to the client being removed.
- The client receiving the [TRANS_USERDATA_TERMINATE_SESSION](#) MUST disconnect all connections and leave the game session.
- The client responds with a [TRANS_USERDATA_END_OF_STREAM \(section 2.2.16\)](#) packet to the server and any other clients that are present.
- The server and other clients send four [TRANS_COMMAND_SACK \(section 2.2.9\)](#) packets and one [TRANS_USERDATA_END_OF_STREAM](#) packet in any order to the client.
- The departing client returns four [TRANS_COMMAND_SACK](#) packets to the server and any other clients that are present.
- The server issues a [TRANS_USERDATA_DESTROY_PLAYER \(section 2.2.15\)](#) packet to the remaining connected clients indicating the removal of the disconnecting client.

3.1.5.6 Client Detects Loss of Connection to Other Client

A client may detect the loss of connection to another client (departing client) in the game session.

- The client that detected the loss of connection sends a [TRANS_USERDATA_REQ_INTEGRITY_CHECK \(section 2.2.27\)](#) packet to the server to request that the server determine whether the departing client is still in the game session.
- The server sends a [TRANS_USERDATA_INTEGRITY_CHECK \(section 2.2.28\)](#) packet to the departing client containing the DPNID of the client that detected the loss of connection.
- If the departing client does not respond in time to the [TRANS_USERDATA_INTEGRITY_CHECK](#) packet, the server sends the [TRANS_USERDATA_DESTROY_PLAYER \(section 2.2.15\)](#) packet to

the client that detected the loss of connection, asking it to remove the departing client entry from its name table.

- If the departing client responds to the server with a [TRANS_USERDATA_INTEGRITY_CHECK_RESPONSE \(section 2.2.29\)](#) packet, the server sends a [TRANS_USERDATA_TERMINATE_SESSION \(section 2.2.14\)](#) packet to the client that detected the loss of connection.
- The client that detected the loss of connection removes itself from the session by sending a [TRANS_USERDATA_END_OF_STREAM \(section 2.2.16\)](#) packet to the server.
- The server sends four [TRANS_COMMAND_SACK \(section 2.2.9\)](#) packets and one [TRANS_USERDATA_END_OF_STREAM](#) packet in any order to the client that detected the loss of connection.
- The client that detected the loss of connection replies with four [TRANS_COMMAND_SACK](#) packets.
- The server notifies the departing client of the removal of the client that detected the loss of connection by sending [TRANS_USERDATA_DESTROY_PLAYER](#) to the departing client.

3.1.5.7 Participant Receives Chat Message

When a participant receives a chat message, it can display the chat message to the user. It SHOULD send a [TRANS_COMMAND_SACK](#) message to acknowledge the packet sequence number in which the chat message was delivered.

3.1.5.8 Command Byte (bCommand) Validation and Processing

Validation and processing of the **bCommand** field of the [TRANS_USERDATA_HEADER \(section 2.2.17\)](#) message is as follows:

- If the User2 flag is set, the receiver SHOULD NOT process this message as a DirectPlay DXDiag Usage Protocol session management message. The receiver MUST acknowledge this message.
- If the User2 and DFRAME flags are not set, the receiver SHOULD NOT process the message as a DirectPlay DXDiag Usage Protocol session management message. The message SHOULD be ignored by the receiver.
- If the User1 and User2 flags are not set and the DFRAME flag is set, the message will be considered as valid and will not be processed as a DirectPlay DXDiag Usage Protocol session management message. The recipient SHOULD acknowledge this message.
- If the User1 and DFRAME flags are set and the User2 flag is not set, and if either or both the NEW_MSG and END_MSG bits are not set, the packet will be considered as valid and message processing SHOULD NOT be started for this packet. The recipient SHOULD acknowledge this packet.
- The POLL, SEQ, and REL bits SHOULD be set in session management messages.

3.1.5.9 Control Byte (bControl) Validation and Processing

Validation and processing of the **bControl** field of the [TRANS_USERDATA_HEADER \(section 2.2.17\)](#) message is as follows:

- If the Keep Alive flag is set and if the same message contains a payload, the receiver SHOULD ignore the payload and SHOULD process the packet as a Keep Alive message.
- If the End Of Stream flag is set and if the same message contains a payload, the receiver SHOULD ignore the End Of Stream flag and SHOULD process the payload.
- If any of the SACK1, SACK2, SEND1, or SEND2 mask bits are set and if there is no corresponding [DWORD](#) in the header, the receiver SHOULD ignore this message.

3.1.5.10 Send Sequence ID (bSeq) Validation and Processing

The [TRANS_USERDATA_HEADER](#) **bSeq** field MUST be either the next **sequence ID** expected or within 63 packets beyond the ID expected by the receiver. If the sequence ID is not within this range, the payload MUST be ignored. In addition, a SACK packet SHOULD be sent indicating the expected sequence ID. If the **PACKET_COMMAND_POLL** flag is set in the **bCommand** field, this packet SHOULD be sent immediately; otherwise, the [Delayed Acknowledgment Timer](#) SHOULD be set using a short timeout, and a SACK packet SHOULD be sent when it expires. The recommended short timeout is 20 milliseconds. This value can be modified according to application and network requirements.

If the sequence ID is the next expected, the receiver SHOULD process the payload and advance the expected sequence ID. If the sequence ID is out of order, but still within 63 packets, the receiver SHOULD queue the payload until it receives either:

- A delayed or retried transmission of the missing packet or packets, and can now process the sequence in order.
- A subsequent packet with a send mask indicating that the missing packet or packets did not use **PACKET_COMMAND_RELIABLE** and will never be retried. Therefore, the receiver should advance its sequence as if it had already received and processed the packets.

If an implementation has out-of-order packets beyond the current expected sequence ID queued, it SHOULD indicate this to the sender using appropriate SACK masks on any outgoing [TRANS_COMMAND_SACK](#) or [TRANS_USERDATA_HEADER](#) based messages. This feedback enables the sender to avoid retrying packets that have already been successfully received.

3.1.5.11 Acknowledged Sequence ID (bNRcv) Processing

If the [TRANS_USERDATA_HEADER](#) **bSeq** sequence ID is valid, the **bNRcv** field SHOULD be inspected. All previously sent [TRANS_USERDATA_HEADER](#) packets that are covered by the **bNRcv** sequence ID, that is, those packets that had been sent with **bSeq** values less than **bNRcv** (accounting for 8-bit counter wrapping) are acknowledged. These packets do not have to be remembered any longer, and their retry timers can be canceled.

3.1.5.12 SACK Mask Processing

When one or both of the optional SACK mask 32-bit fields is present, and one or more bits are set in the fields, the sender is indicating that it received a packet or packets out of order, presumably due to packet loss. The two 32-bit, little-endian fields MUST be considered as one 64-bit field, where **dwSACKMask1** is the low 32 bits and **dwSACKMask2** is the high 32 bits. If either 32-bit field is not available, the entire contents of the 64-bit field MUST be considered as all 0.

The receiver of a SACK mask SHOULD loop through each bit of the combined 64-bit value in the ascending order of significance. Each bit corresponds to a sequence ID after **bNRcv**. If the bit is set, it indicates that the corresponding packet was received out of order

The receiver of a SACK mask SHOULD shorten the retry timer for the first frame of the window to speed recovery from the packet loss. The recommended duration is 10 milliseconds. This value can be modified according to application and network requirements. The receiver MAY also choose to remove the selectively acknowledged packets from its list to retry.

3.1.5.13 Send Mask Processing

When one or both of the optional send mask 32-bit fields is present, and one or more bits are set in the fields, the sender is indicating that it sent a packet or packets that were not marked as reliable and did not receive an acknowledgement yet. The two 32-bit, little-endian fields MUST be considered as one 64-bit field, where **dwSendMask1** is the low 32 bits and **dwSendMask2** is the high 32 bits. If either 32-bit field is not available, the entire contents of the 64-bit field MUST be considered as all 0.

The receiver of a send mask SHOULD loop through each bit of the combined 64-bit value from the least significant bit to the most significant in little-endian byte order. Each bit corresponds to a sequence ID prior to **bSeq**, and if that is the bit that is set, it indicates that the corresponding packet was not sent reliably and will not be retried. If the recipient of the send mask had not received the packet and had not already processed a send mask that identified the sequence ID, it SHOULD consider the packet as dropped and release its placeholder in the sequence. That is, any sequential messages that could not be indicated because of the gap in the sequence where the packet that was not marked as reliable had been SHOULD now be reported to the upper layer.

3.1.6 Timer Events

3.1.6.1 Connect Retry Timer

When the connect retry timer expires, a new [TRANS_COMMAND_CONNECT](#) or [TRANS_COMMAND_CONNECT_ACCEPT](#) message SHOULD be sent, depending on the current state. The connect retry timer SHOULD then be rescheduled for the next period. It is recommended that the retry period start at 200 ms, doubling every time with a maximum of 5 seconds and 14 retries.

If the maximum number of retries has already been attempted when the timer expires, the connection attempt SHOULD be considered as failed. If the connection was initiated from an inbound [TRANS_COMMAND_CONNECT](#) packet arriving on a listening computer system, the listener MAY choose to go back to listening if it did not allow additional connection attempts while the failed attempt was in progress.

3.1.6.2 EnumQuery Retry Timer

When the EnumQuery Retry Timer expires, a new [EnumQuery](#) message SHOULD be sent. The EnumQuery Retry Timer SHOULD be rescheduled for the next period.

3.1.6.3 Retry Timer

When the retry timer elapses without having been canceled, and the associated packet was marked as reliable, the [TRANS_USERDATA_HEADER](#) prefixed message SHOULD be resent, and the retry timer SHOULD then be scheduled for the next period. It is recommended that the retry period start at $2.5 \text{ RTT} + 100 \text{ ms}$ and that there be linear backoff for the second and third retries, exponential backoff for subsequent retries 4 through 8, and an overall cap at 5 seconds and 10 retries.

If the maximum number of retries has already been attempted when the timer expires, the connection SHOULD be considered as lost. All other in-progress sends SHOULD be discarded, and the upper layer SHOULD be informed of the disconnection.

When the retry timer elapses without having been canceled, and the associated packet was not marked as reliable, the packet's sequence ID SHOULD be remembered as requiring a send mask to be used in future transmissions.

3.1.6.4 KeepAlive Retry Timer

A successfully validated SACK packet SHOULD count as a valid receive and therefore, restart the KeepAlive Retry Timer as described in section [3.1.2.4](#).

All successfully validated DFRAME packets SHOULD count as valid receives and therefore, restart the KeepAlive Retry Timer as described in section [3.1.2.4](#).

3.1.6.5 Path Test Retry Timer

When the Path Test Retry Timer elapses, the new client MUST send a new [SESS_PATH_TEST](#) message to the source address and port of the existing client for which it is expecting a connection. This message MUST be sent from the same UDP port number on which it is expecting the connection. If fewer than the maximum number of attempts have been made, the timer MUST then be rescheduled so that it MAY elapse again. Otherwise, the retries have been exhausted and the Path Test operation SHOULD be canceled.

3.1.6.6 Delayed Acknowledgment Timer

When the Delayed Acknowledgment (SACK) Timer expires without having been canceled, the computer SHOULD send a dedicated SACK message that contains the current connection state information.

3.1.7 Other Local Events

None.

3.2 Server Details

3.2.1 Abstract Data Model

None.

3.2.2 Timers

None.

3.2.3 Initialization

When a DXDiag-compatible application initializes as a host, it begins listening for enumeration requests on port 6073. It also begins accepting connections on the user-specified port.

3.2.4 Higher-Layer Triggered Events

None.

3.2.5 Processing Events and Sequencing Rules

When a server receives an [EnumQuery](#) request, the server SHOULD respond with an [EnumResponse](#).

When a server receives a [TRANS_COMMAND_CONNECT](#) packet from a new client, the server SHOULD respond with a [TRANS_COMMAND_CONNECT_ACCEPT](#) packet and begin the sequence specified in section [3.1.5.1](#) or [3.1.5.2](#).

3.2.6 Timer Events

None.

3.2.7 Other Local Events

None.

3.3 Client Details

3.3.1 Abstract Data Model

None.

3.3.2 Timers

None.

3.3.3 Initialization

When a DXDiag-compatible application initializes as a client, it begins enumerating for hosts on port 6073.

3.3.4 Higher-Layer Triggered Events

When a higher layer initiates game session discovery, the client SHOULD begin sending [EnumQuery](#) messages to the address specified by the higher layer. This MAY be the broadcast address to discover local area network (LAN) DXDiag game sessions.

A higher layer presents a list of discovered game sessions to the user for selection, or it MAY automatically select a discovered game session. The higher layer will then initiate a connection attempt to the specified game session. The client SHOULD initiate the sequence identified in section [3.1.5.1](#) or [3.1.5.2](#).

3.3.5 Processing Events and Sequencing Rules

When a client receives an [EnumResponse](#) to a previously sent query, the client SHOULD include the responder in a list of available game sessions in the user interface.

When the server sends a [TRANS_USERDATA_ADD_PLAYER](#) message indicating that another client is joining the game session, the client SHOULD install the new player's information in the name table. Once the client receives the subsequent [TRANS_USERDATA_INSTRUCT_CONNECT](#) message, the client SHOULD then begin connecting to the new participant using the previously specified addressing information.

3.3.6 Timer Events

None.

3.3.7 Other Local Events

None.

4 Protocol Examples

4.1 User Joins a DXDiag Chat Session Example

The following example describes how clients connect to a DXDiag chat session.

- In the DXDiag application, the user selects the DirectPlay test option on the Network tab.
- The user selects the Network Provider, and then clicks Join Session.
- The DXDiag application goes through the steps listed in section [3.1.5.1](#).

4.2 Client Disconnects from a DXDiag Chat Session Example

The following example describes how clients and servers disconnect from a DXDiag chat session.

- User selects **CLOSE** on the **Chat** window. This is the same action regardless of whether the user is the server or the client in the game session. However, the sequence of events that results differs according to the current role of the participant, as specified in sections [3.1.5.3](#) and [3.1.5.4](#).

4.3 New Client Joins a Game Session with an Existing Client Example

The following example demonstrates the message sequence when a new client joins a DirectPlay game session that has an existing client.

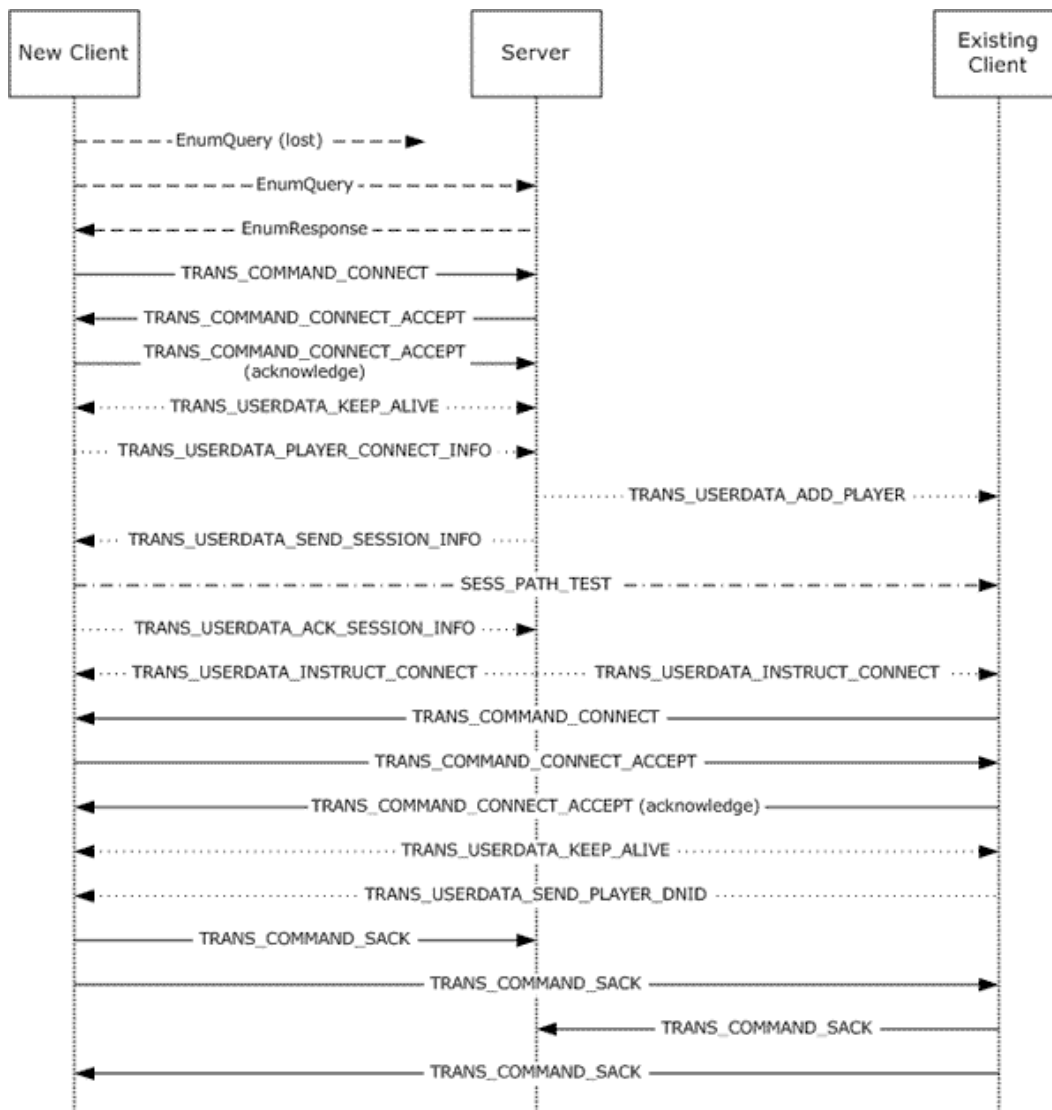


Figure 3: Sequence diagram for a new client joining a game session with an existing client

Note In the diagram, different line styles are used to distinguish between message types, including query/response, TRANS_COMMAND, TRANS_USERDATA, and SESS_PATH_TEST.

The steps in the message sequence are as follows:

1. A new client sends an [EnumQuery](#) message to search for a DirectPlay game session.

Note EnumQuery messages are unreliable, and therefore, are at risk of being lost. In addition, it is possible to send multiple EnumQuery messages. In this example, it is assumed that the first EnumQuery message is lost and the second EnumQuery message is successfully received by the server.

2. In response to the EnumQuery message, the server sends an [EnumResponse](#) message and echoes the **EnumPayload** field as part of the response.

3. The connection handshake is started by the new client sending a [TRANS_COMMAND_CONNECT](#) packet to the server. The **bMsgId** field is reflected in the **bRspId** field of the [TRANS_COMMAND_CONNECT_ACCEPT](#) packet to correlate the response.
4. The server responds by sending a [TRANS_COMMAND_CONNECT_ACCEPT](#) packet to the new client and echoes the **bMsgID** field of the [TRANS_COMMAND_CONNECT](#) packet in the **bRspID** field.
5. The new client sends a [TRANS_COMMAND_CONNECT_ACCEPT](#) packet to acknowledge the connection. It echoes the **bMsgId** field of the [TRANS_COMMAND_CONNECT_ACCEPT](#) packet from the server in the **bRspId** field of the acknowledged packet.
6. The new client and the server then exchange [TRANS_USERDATA_KEEPALIVE](#) packets to indicate the successful connection handshake.
7. The new client sends its information to the server using the [TRANS_USERDATA_PLAYER_CONNECT_INFO](#) packet.
8. The server sends the game session information to the new client using the [TRANS_USERDATA_SEND_SESSION_INFO](#) packet, and informs the existing client about the newly joining client using the [TRANS_USERDATA_ADD_PLAYER](#) packet.
9. The new client tests the presence of a network path to the existing client by sending the [SESS_PATH_TEST](#) packet.
10. The new client acknowledges the game session information sent by the server by sending the [TRANS_USERDATA_ACK_SESSION_INFO](#) packet.
11. The server instructs the existing client to connect to the new client by sending the [TRANS_USERDATA_INSTRUCT_CONNECT](#) packet.
12. The server also sends the [TRANS_USERDATA_INSTRUCT_CONNECT](#) packet to the new client to cause the new client to resynchronize its name table.
13. The existing client validates the DPNID of the new client that was sent in the [TRANS_USERDATA_INSTRUCT_CONNECT](#) packet using the **dpnid** field sent in the [TRANS_USERDATA_ADD_PLAYER](#) packet. After successful validation of the DPNID, the existing client starts connecting to the new client by sending the [TRANS_COMMAND_CONNECT](#) packet.
14. The new client accepts the connection request from the existing client by sending the [TRANS_COMMAND_CONNECT_ACCEPT](#) packet.
15. The existing client acknowledges the connection to the new client by sending the [TRANS_COMMAND_CONNECT_ACCEPT](#) packet.
16. The new client and the existing client exchange the [TRANS_USERDATA_KEEPALIVE](#) packet to indicate successful connection handshake.
17. The existing client sends its DPNID value in a [TRANS_USERDATA_SEND_PLAYER_DNID](#) packet to the new client.
18. The new client and the existing client acknowledge the connection by exchanging [TRANS_COMMAND_SACK](#) packets between themselves and with the server.

5 Security

5.1 Security Considerations for Implementers

The DirectPlay DXDiag Usage Protocol is not intended for applications that require robust security, which cannot be implemented using other layers such as IPsec.

5.2 Index of Security Parameters

None.

6 Appendix A: Product Behavior

The information in this specification is applicable to the following Microsoft products or supplemental software. References to product versions include released service packs:

- Windows® XP operating system
- Windows Server® 2003 operating system

Exceptions, if any, are noted below. If a service pack or Quick Fix Engineering (QFE) number appears with the product version, behavior changed in that service pack or QFE. The new behavior also applies to subsequent service packs of the product unless otherwise specified. If a product edition appears with the product version, behavior is different in that product edition.

Unless otherwise specified, any statement of optional behavior in this specification that is prescribed using the terms SHOULD or SHOULD NOT implies product behavior in accordance with the SHOULD or SHOULD NOT prescription. Unless otherwise specified, the term MAY implies that the product does not follow the prescription.

[<1> Section 1.7:](#) When a DirectPlay DXDiag Usage Protocol receiver indicates support for coalescence (version level 0x00010005 or higher), a Windows sender can utilize the coalescence feature to fuse any TRANS_USERDATA message except [TRANS_USERDATA_END_OF_STREAM](#), [TRANS_USERDATA_KEEPLIVE](#), and [TRANS_USERDATA_SEND_MESSAGE](#). Windows implementations never utilize the signing feature (version level 0x00010006), even when the receiver indicates support for signing.

[<2> Section 1.7:](#) After the release of DirectX 6.0, DirectPlay versions (1) through 3A were modified to resolve to DirectPlay 4. However, DirectPlay versions (1) through 3A were last released in Windows 98 Second Edition.

[<3> Section 2.2.5:](#) Only the DPNSSESSION_MIGRATE_HOST (0x00000004) value is used in the Windows implementation of the **ApplicationDescFlags** field.

[<4> Section 2.2.6:](#) The value of the **dwMsgId** field should change every time a [SESS_PATH_TEST](#) message is retried.

[<5> Section 2.2.7:](#) Windows Server 2003 and Windows XP, without the DirectX 9 or later **runtime** installed, report versions less than 0x00010005, and do not support signing or coalescence.

[<6> Section 2.2.8:](#) Windows XP and Windows Server 2003, without the DirectX 9 or later runtime installed, report versions less than 0x00010005, and do not support signing or coalescence.

[<7> Section 2.2.11:](#) Only the 0x00000100 value is used in the Windows implementation of the **dwFlags** field.

[<8> Section 2.2.11:](#) The **dwDNETClientVersion** field must be set to one of the following values. Windows XP and Windows Server 2003 will send only 0x00000007 (DirectX 9.0) as the DirectX version number. Downgrading the DirectX version is not supported.

Value	Meaning
0x00000001	DirectX 8.0
0x00000002	DirectX 8.1
0x00000003	Pocket PC

Value	Meaning
0x00000004	Not used
0x00000005	Not used
0x00000006	DirectX 8.2
0x00000007	DirectX 9.0

<9> [Section 2.2.26](#): The **dwDNETVersion** field must be set to one of the following values. Windows XP and Windows Server 2003 will send only 0x00000007 (DirectX 9.0) as the DirectX version number. Downgrading the DirectX version is not supported.

Value	Meaning
0x00000001	DirectX 8.0
0x00000002	DirectX 8.1
0x00000003	Pocket PC
0x00000004	Not used
0x00000005	Not used
0x00000006	DirectX 8.2
0x00000007	DirectX 9.0

<10> [Section 2.2.33](#): Only the 0x00000004 value is used in the Windows implementation of the **dwFlags** field.

<11> [Section 2.2.33.1](#): Only the 0x00000002 and 0x00000100 values are used in the Windows implementation of the **dwFlags** field.

<12> [Section 2.2.33.1](#): The **dwDNETVersion** field must be set to one of the following values. Windows XP and Windows Server 2003 will send only 0x00000007 (DirectX 9.0) as the DirectX version number. Downgrading the DirectX version is not supported.

Value	Meaning
0x00000001	DirectX 8.0
0x00000002	DirectX 8.1
0x00000003	Pocket PC
0x00000004	Not used
0x00000005	Not used
0x00000006	DirectX 8.2
0x00000007	DirectX 9.0

<13> [Section 3.1.2.1](#): The Windows implementation will retry as specified despite the prescriptive indication of "MAY".

<14> [Section 3.1.5.4](#): By default, the DXDiag application transfers the hosting to the client that has been in the chat the longest.

7 Change Tracking

No table of changes is available. The document is either new or has had no changes since its last release.

8 Index

[MESSAGE_HEADER packet](#) 14

A

Abstract data model
client ([section 3.1.1](#) 62, [section 3.3.1](#) 74)
[common details](#) 62
server ([section 3.1.1](#) 62, [section 3.2.1](#) 73)
[Acknowledged Sequence ID \(bNRcv\) processing](#) 71
[Applicability](#) 12

C

[Capability negotiation](#) 12
[Change tracking](#) 83
Chat messages
[receiving](#) 70
[sending](#) 64
Chat session
[client disconnections](#) 68
[server disconnections](#) 68
Client
abstract data model ([section 3.1.1](#) 62, [section 3.3.1](#) 74)
higher-layer triggered events ([section 3.1.4](#) 64, [section 3.3.4](#) 74)
initialization ([section 3.1.3](#) 63, [section 3.3.3](#) 74)
local events ([section 3.1.7](#) 73, [section 3.3.7](#) 75)
message processing ([section 3.1.5](#) 64, [section 3.3.5](#) 74)
sequencing rules ([section 3.1.5](#) 64, [section 3.3.5](#) 74)
timer events ([section 3.1.6](#) 72, [section 3.3.6](#) 74)
timers ([section 3.1.2](#) 62, [section 3.3.2](#) 74)
[Client Disconnects from a DXDiag chat session example](#) 76
[Client joins game session with existing client example](#) 76
[Command Byte \(bCommand\) - validation and processing](#) 70
[Control Byte \(bControl\) - validation and processing](#) 70

D

Data model - abstract
client ([section 3.1.1](#) 62, [section 3.3.1](#) 74)
[common details](#) 62
server ([section 3.1.1](#) 62, [section 3.2.1](#) 73)
DirectPlay session
[with multiple other clients](#) 66
[with no other clients](#) 64
[Disconnecting](#) 64
[DN_ALTERNATE_ADDRESS_IPv4 packet](#) 57
[DN_ALTERNATE_ADDRESS_IPv6 packet](#) 58
[DN_NAMETABLE_ENTRY_INFO packet](#) 53
[DN_NAMETABLE_MEMBERSHIP_INFO packet](#) 55
DXDiag chat session example
[disconnecting](#) 76

[joining](#) 76

E

[EnumQuery packet](#) 18
[EnumResponse packet](#) 19
Examples
[Client Disconnects from a DXDiag chat session example](#) 76
[Client joins game session with existing client example](#) 76
[User Joins a DXDiag chat session example](#) 76

F

[Fields - vendor-extensible](#) 13

G

[Glossary](#) 7

H

Higher-layer triggered events
client ([section 3.1.4](#) 64, [section 3.3.4](#) 74)
server ([section 3.1.4](#) 64, [section 3.2.4](#) 73)

I

[Implementer - security considerations](#) 79
[IN_ADDR packet](#) 58
[IN6_ADDR packet](#) 59
[Index of security parameters](#) 79
[Informative references](#) 9
Initialization
client ([section 3.1.3](#) 63, [section 3.3.3](#) 74)
server ([section 3.1.3](#) 63, [section 3.2.3](#) 73)
[Introduction](#) 7

L

Local events
client ([section 3.1.7](#) 73, [section 3.3.7](#) 75)
server ([section 3.1.7](#) 73, [section 3.2.7](#) 74)

M

Message processing
client ([section 3.1.5](#) 64, [section 3.3.5](#) 74)
server ([section 3.1.5](#) 64, [section 3.2.5](#) 73)
Messages
[chat](#) 64
[syntax](#) 14
[transport](#) 14

N

[New client joins game session with existing client example](#) 76

[Normative references](#) 9

O

[Overview \(synopsis\)](#) 10

P

[Parameters - security index](#) 79

[PATHTESTKEYDATA packet](#) 60

[Preconditions](#) 12

[Prerequisites](#) 12

[Product behavior](#) 80

R

References

[informative](#) 9

[normative](#) 9

[Relationship to other protocols](#) 11

S

[SACK mask processing](#) 71

Security

[implementer considerations](#) 79

[parameter index](#) 79

[Send mask processing](#) 72

[Send Sequence ID \(bSeq\) - validation and processing](#) 71

Sequencing rules

client ([section 3.1.5](#) 64, [section 3.3.5](#) 74)

server ([section 3.1.5](#) 64, [section 3.2.5](#) 73)

Server

abstract data model ([section 3.1.1](#) 62, [section 3.2.1](#) 73)

higher-layer triggered events ([section 3.1.4](#) 64, [section 3.2.4](#) 73)

initialization ([section 3.1.3](#) 63, [section 3.2.3](#) 73)

local events ([section 3.1.7](#) 73, [section 3.2.7](#) 74)

message processing ([section 3.1.5](#) 64, [section 3.2.5](#) 73)

sequencing rules ([section 3.1.5](#) 64, [section 3.2.5](#) 73)

timer events ([section 3.1.6](#) 72, [section 3.2.6](#) 74)

timers ([section 3.1.2](#) 62, [section 3.2.2](#) 73)

[SESS_PATH_TEST packet](#) 22

[Standards assignments](#) 13

[Syntax](#) 14

T

Timer events

client ([section 3.1.6](#) 72, [section 3.3.6](#) 74)

server ([section 3.1.6](#) 72, [section 3.2.6](#) 74)

Timers

client ([section 3.1.2](#) 62, [section 3.3.2](#) 74)

connect retry ([section 3.1.2.1](#) 62, [section 3.1.6.1](#) 72)

delayed acknowledgment retry ([section 3.1.2.6](#) 63, [section 3.1.6.6](#) 73)

EnumQuery retry ([section 3.1.2.2](#) 62, [section 3.1.6.2](#) 72)

KeepAlive retry ([section 3.1.2.4](#) 63, [section 3.1.6.4](#) 73)

Path Test retry ([section 3.1.2.5](#) 63, [section 3.1.6.5](#) 73)

retry ([section 3.1.2.3](#) 62, [section 3.1.6.3](#) 72)

server ([section 3.1.2](#) 62, [section 3.2.2](#) 73)

[Tracking changes](#) 83

[TRANS_COMMAND_CONNECT packet](#) 23

[TRANS_COMMAND_CONNECT_ACCEPT packet](#) 24

[TRANS_COMMAND_SACK packet](#) 26

[TRANS_USERDATA_ACK_NAMETABLE_OP packet](#) 41

[TRANS_USERDATA_ACK_SESSION_INFO packet](#) 28

[TRANS_USERDATA_ADD_PLAYER packet](#) 28

[TRANS_USERDATA_CONNECT_ATTEMPT_FAILED packet](#) 31

[TRANS_USERDATA_CONNECT_FAILED packet](#) 31

[TRANS_USERDATA_DESTROY_PLAYER packet](#) 33

[TRANS_USERDATA_END_OF_STREAM packet](#) 34

[TRANS_USERDATA_HEADER packet](#) 35

[TRANS_USERDATA_HOST_MIGRATE packet](#) 38

[TRANS_USERDATA_HOST_MIGRATE_COMPLETE packet](#) 39

[TRANS_USERDATA_INSTRUCT_CONNECT packet](#) 39

[TRANS_USERDATA_INSTRUCTED_CONNECT_FAIL D packet](#) 40

[TRANS_USERDATA_INTEGRITY_CHECK packet](#) 46

[TRANS_USERDATA_INTEGRITY_CHECK_RESPONSE packet](#) 47

[TRANS_USERDATA_KEEPLIVE packet](#) 40

[TRANS_USERDATA_NAMETABLE_VERSION packet](#) 40

[TRANS_USERDATA_PLAYER_CONNECT_INFO packet](#) 43

[TRANS_USERDATA_REQ_INTEGRITY_CHECK packet](#) 46

[TRANS_USERDATA_REQ_NAMETABLE_OP packet](#) 41

[TRANS_USERDATA_RESYNC_VERSION packet](#) 47

[TRANS_USERDATA_SEND_MESSAGE packet](#) 47

[TRANS_USERDATA_SEND_PLAYER_DNID packet](#) 48

[TRANS_USERDATA_SEND_SESSION_INFO packet](#) 49

[TRANS_USERDATA_TERMINATE_SESSION packet](#) 32

[Transport](#) 14

Triggered events - higher-layer

client ([section 3.1.4](#) 64, [section 3.3.4](#) 74)

server ([section 3.1.4](#) 64, [section 3.2.4](#) 73)

U

[User Joins a DXDiag chat session example](#) 76

V

[Vendor-extensible fields](#) 13

[Versioning](#) 12