

F.2.2.5.3 [SigList-3] (from Co-ord-U to Reset-Start-U)

See Annex A/Q.2931.

F.2.2.5.4 [SigList-4] (from Reset-Start-U to Co-ord-U)

See Annex A/Q.2931.

F.2.2.5.5 [SigList-5] (from Co-ord-U to Reset-Response-U)

See Annex A/Q.2931.

F.2.2.5.6 [SigList-6] (from Reset-Response-U to Co-ord-U)

See Annex A/Q.2931.

F.2.2.5.7 [SigList-7] (from Call-Control-U to Party-Control-U)

- Signals related to primitives:
 - Setup req.
 - Alerting req.
 - Release req.
 - Release resp.
 - Add Party req.
 - Add Party Acknowledge req.
 - Add Party Reject req.
 - Party Alerting req.
 - Drop Party req.
 - Drop Party Acknowledge req.
 - Party Status Enquiry req.
- Messages:
 - SETUP
 - ALERTING
 - CONNECT
 - CONNECT ACKNOWLEDGE
 - RELEASE
 - RELEASE COMPLETE
 - STATUS ENQUIRY (incl. Endpoint reference)
 - STATUS (incl. Endpoint reference and Endpoint state)
 - ADD PARTY
 - ADD PARTY ACKNOWLEDGE
 - ADD PARTY REJECT
 - PARTY ALERTING
 - DROP PARTY
 - DROP PARTY ACKNOWLEDGE

F.2.2.5.8 [SigList-8] (from Party-Control-U to Call-Control-U)

- Signals related to primitives:
 - Add Party ind.
 - Add Party Acknowledge ind.
 - Add Party Reject ind.
 - Party Alerting ind.
 - Drop Party ind.

- Drop Party Acknowledge ind.
- Messages:
 - ADD PARTY
 - ADD PARTY ACKNOWLEDGE
 - ADD PARTY REJECT
 - PARTY ALERTING
 - DROP PARTY
 - DROP PARTY ACKNOWLEDGE
 - STATUS ENQUIRY (incl. Endpoint reference)
 - STATUS (incl. Endpoint reference and Endpoint state)

F.2.3 PROCESS Co-ord-U: State event diagram

Although the process Co-ord-U in Recommendation Q.2971 handles additional primitives and signals, the SDL description of Annex A/Q.2931 remains valid with only the following editorial or technical changes:

- Global modification related to terminology:
The name of the process “Q.2931-U” has to be replaced by “Call-Control-U”.
- Transfer of a Status Enquiry req. from AP via Co-ord-U to Call-Control-U has to be added.
- Reception of a Reset-req. or a RESTART message trigger the Co-ord-U to send a Release resp. or RELEASE COMPLETE, respectively, to all Call-Control-U processes affected.

F.2.4 Process Call-Control-U: Overview State-Event-Diagram (does not include Timer Expires)

[Numbers show sheet No. (sheet 1 of 39); empty fields show events not described/applicable; Interworking with Narrow-band ISDN not included.]

State Event (5.1, 5.8)	U0	U1	U3	U4	U6	U7	U8	U9	U10	U11	U12
(from Co-ord N:)											
Setup-req.	4, 5										
Proceeding-req.					12						
Alerting-req.					13			17			
Setup-resp.					13	14		17			
Release-req.		27	27	27	27	27	27	27	27		
Release-resp.					12						30
Notify-req.		18	18	18	18	18	18	18	18	18	18
Link Establish conf.									19		
Link Establish ind.		36	36	36	36	36	36	36	19, 20	36	36
Link Release ind.	36	36	36	36	36	36	36	36	19	36	36
Link Establish error									19		
SETUP	4, 5										
CALL PROC.		6	35	35	35	35	35	35	35	35	35

Process Call-Control-U
(sheet 1 of 39)

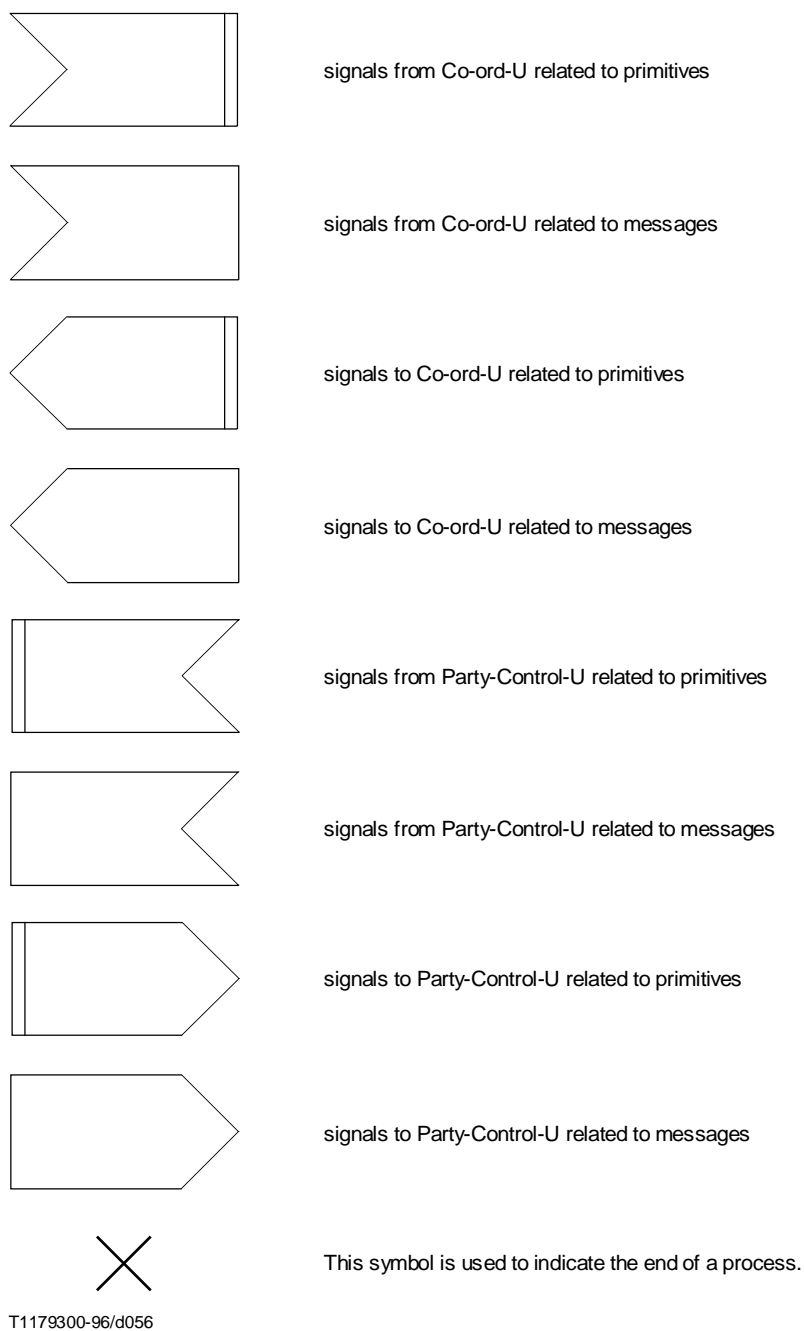
State Event (5.1, 5.8)	U0	U1	U3	U4	U6	U7	U8	U9	U10	U11	U12
ALERTING		37	7, 8	35	35	35	35	35	35	35	35
CONNECT		37	7, 8	11	35	35	35	35	35	35	35
CONNECT ACK.		35	35	35	35	35	15, 16	35	35	35	35
RELEASE		25	25	25	25	25	25	25	25	28	25
RELEASE COMP.		25	25	25	25	25	25	25	25	25	25
STATUS		32, 33	32, 33	32, 33	32, 33	32, 33	32, 33	32, 33	32, 33	29	30
STATUS ENQUIRY		31	31	31	31	31	31	31	31	31	31
NOTIFY		18	18	18	18	18	18	18	18	18	18
Add Party req.				9, 10					21		
Add Party Ack. req.									21		
Add Party Rej. req.						14	15		21		
Party Alerting req.						14	15		21		
Drop Party req.		26	26	26	26	26	26	26	21		
DP Ack. req.		26	26	26	26	26	26	26	21		
Status Enq. req.		31	31	31	31	31	31	31	31	31	31
ADD PARTY		35	35	35	35	14	15	35	21	35	35
ADD PARTY ACK.		35	35	35	35	35	35	35	21, 22	35	35
ADD PARTY REJ.		35	35	9	35	35	35	35	21, 22	35	35
PARTY ALERTING		35	35	9	35	35	35	35	21, 22	35	35
DROP PARTY		26	26	26	26	26	26	26	21, 22	28	30
DP ACK		26	26	26	26	26	26	26	21, 22	28	30
(from PC-N)											
Add Party ind.	23	23	23	23	23	23	23	23	23	23	23
Add Party Ack. ind.	23	23	23	23	23	23	23	23	23	23	23
Add Party Rej. ind.	23	23	23	23	23	23	23	23	23	23	23
Party Alerting ind.	23	23	23	23	23	23	23	23	23	23	23
Drop Party ind.	23	23	23	23	23	23	23	23	23	23	23
Drop Party Ack. ind.	23	23	23	23	23	23	23	23	23	23	23
ADD PARTY	24	24	24	24	24	24	24	24	24	24	24
ADD PARTY ACK.	24	24	24	24	24	24	24	24	24	24	24
ADD PARTY REJ.	24	24	24	24	24	24	24	24	24	24	24
PARTY ALERTING	24	24	24	24	24	24	24	24	24	24	24
DROP PARTY	24	24	24	24	24	24	24	24	24	24	24
DP ACK.	24	24	24	24	24	24	24	24	24	24	24
STATUS ENQ. (ER)	24	24	24	24	24	24	24	24	24	24	24
STATUS (ER, ES)	24	24	24	24	24	24	24	24	24	24	24

Process Call-Control-U

-U
(sheet 2 of 39)

Process Call-Control-U – Legend

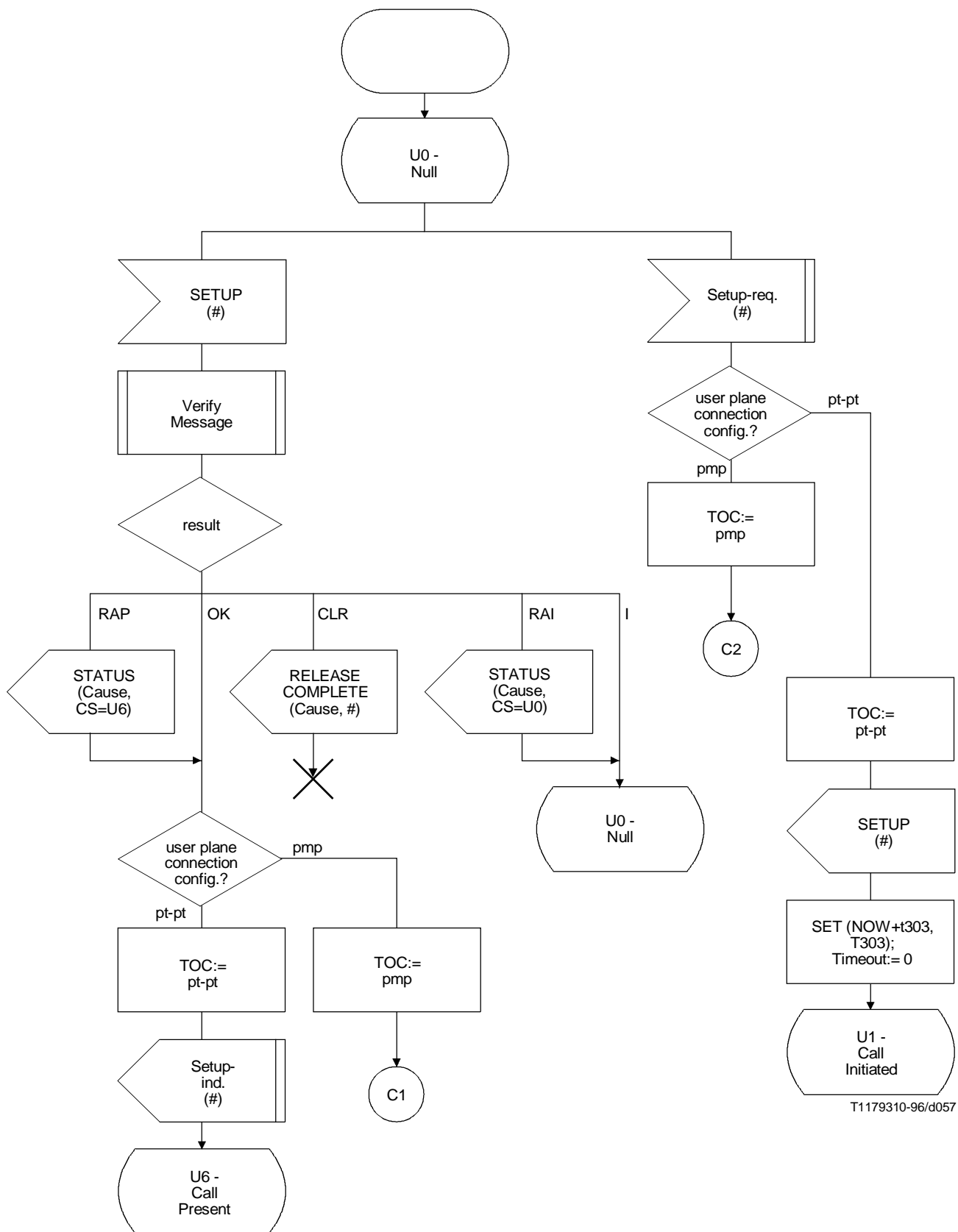
See Recommendation Q.2931, SDL Key; in addition:



NOTE – If a STATUS message has to be returned in a point-to-multipoint call/connection as a result of an error situation (see 9.5.4, 9.5.7, 9.5.8), it shall include ER and ES. However, to avoid unnecessary complexity, this is not explicitly shown in the attached Call-Control-U SDLs.

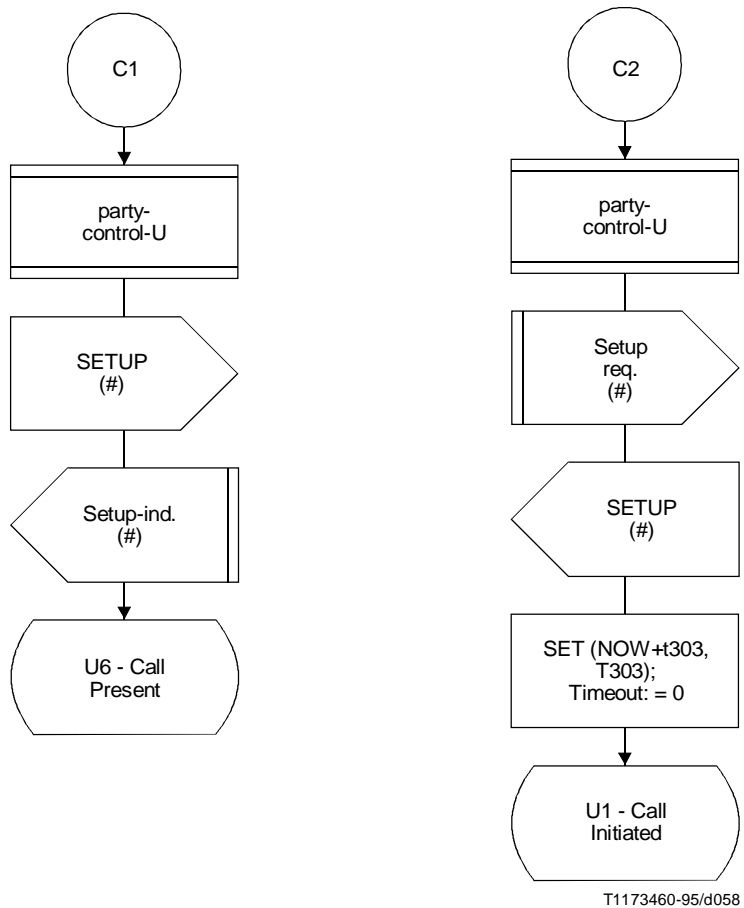
Process Call-Control-U

(Sheet 3 of 39)

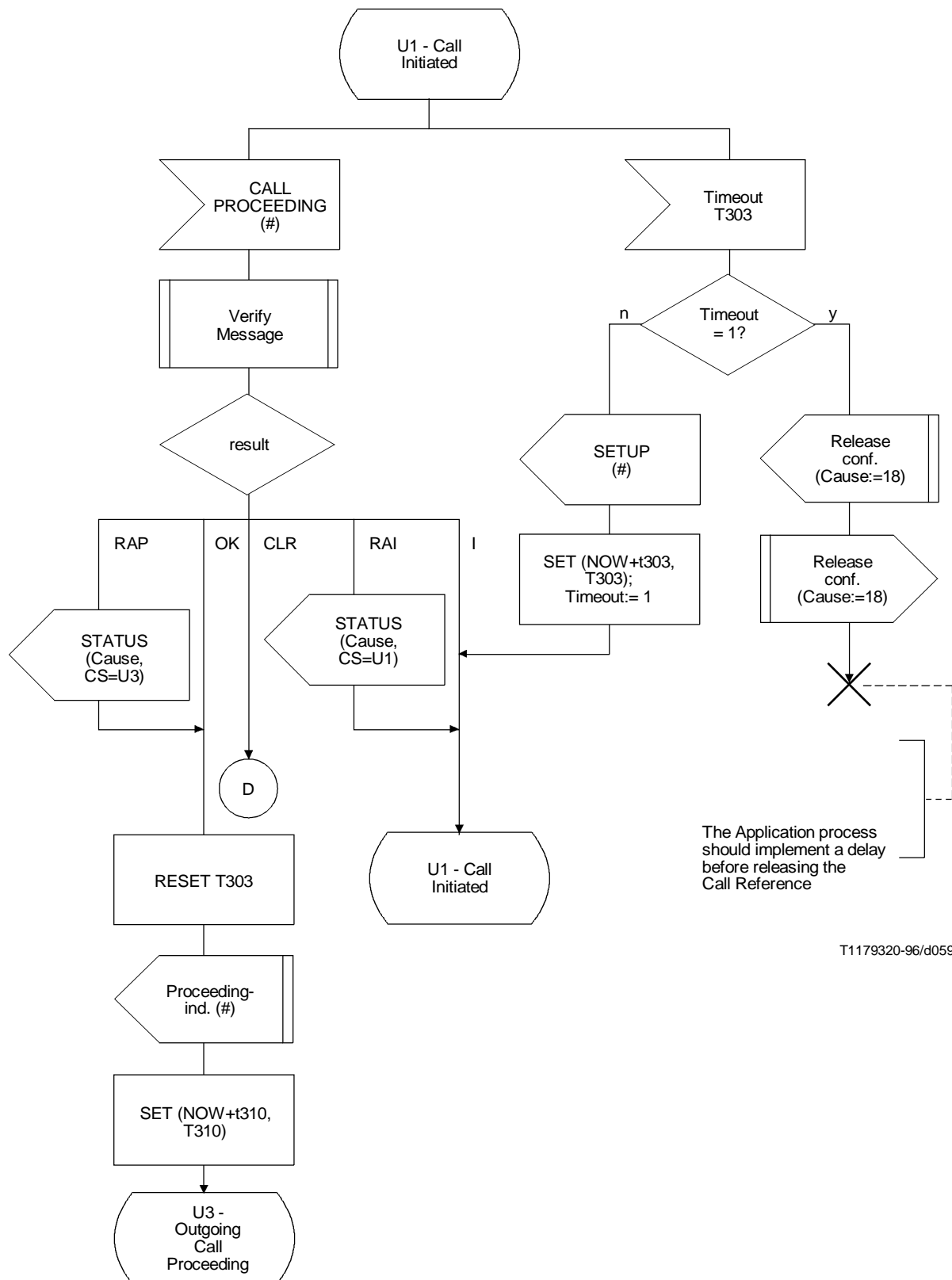


T1179310-96/d057

Process Call-Control-U
(combined point-to-point and point-to-multipoint procedures)
(Sheet 4 of 39)



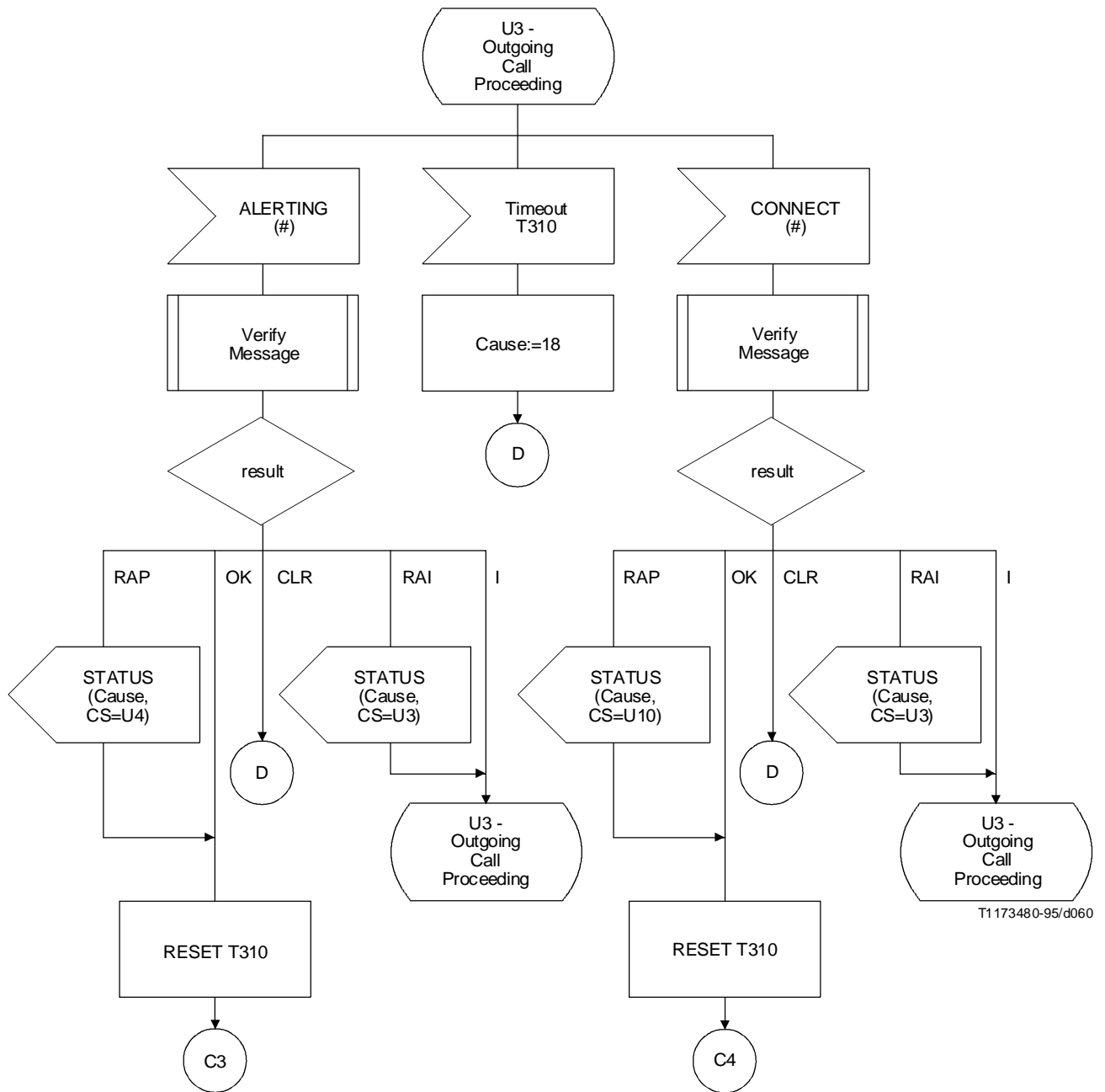
Process Call-Control-U
(Sheet 5 of 39)



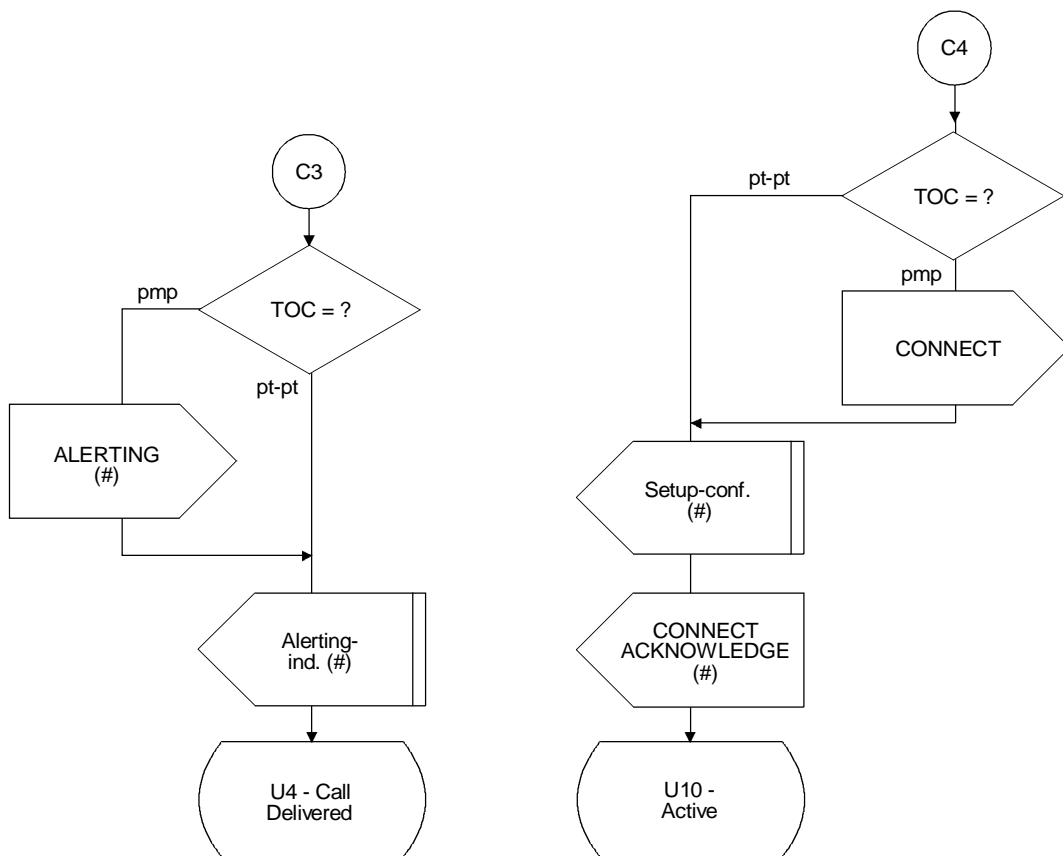
T1179320-96/d059

Process Call-Control-U

(Sheet 6 of 39)



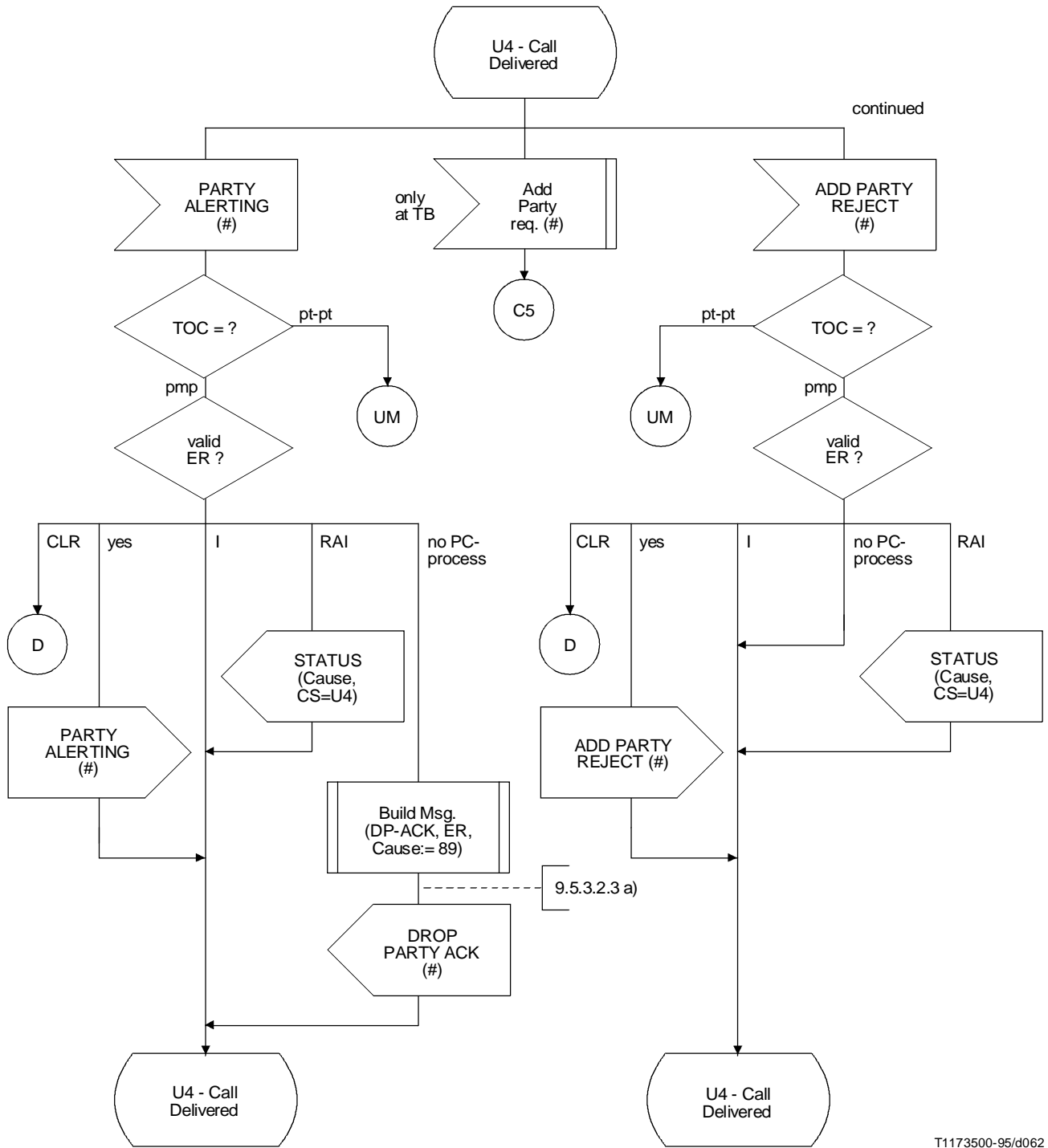
Process Call-Control-U
(Sheet 7 of 39)



T1173490-95/d061

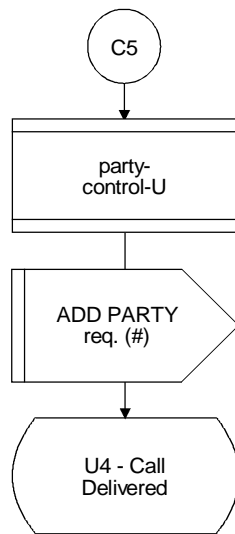
Process Call-Control-U

(Sheet 8 of 39)



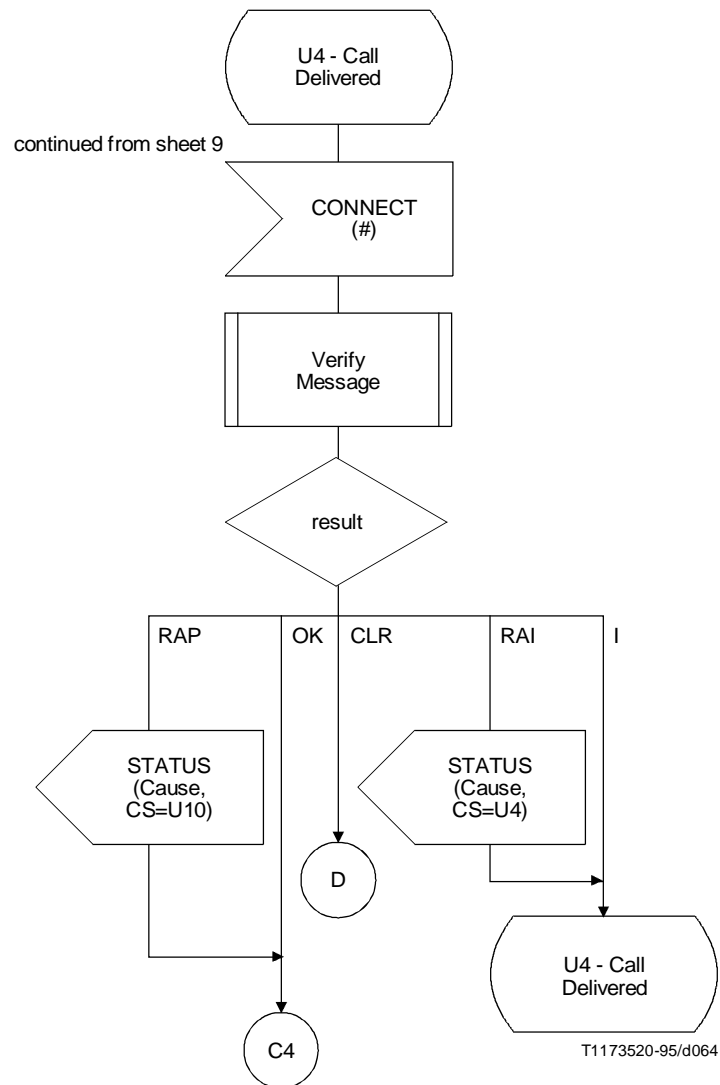
T1173500-95/d062

Process Call-Control-U
(Sheet 9 of 39)

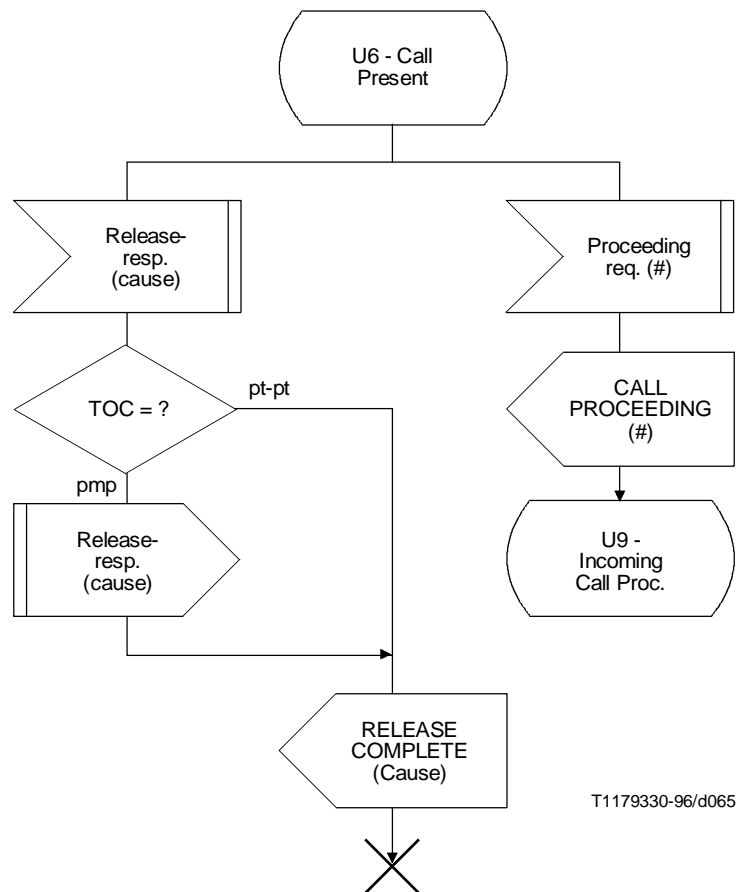


T1173510-95/d063

Process Call-Control-U
(Sheet 10 of 39)

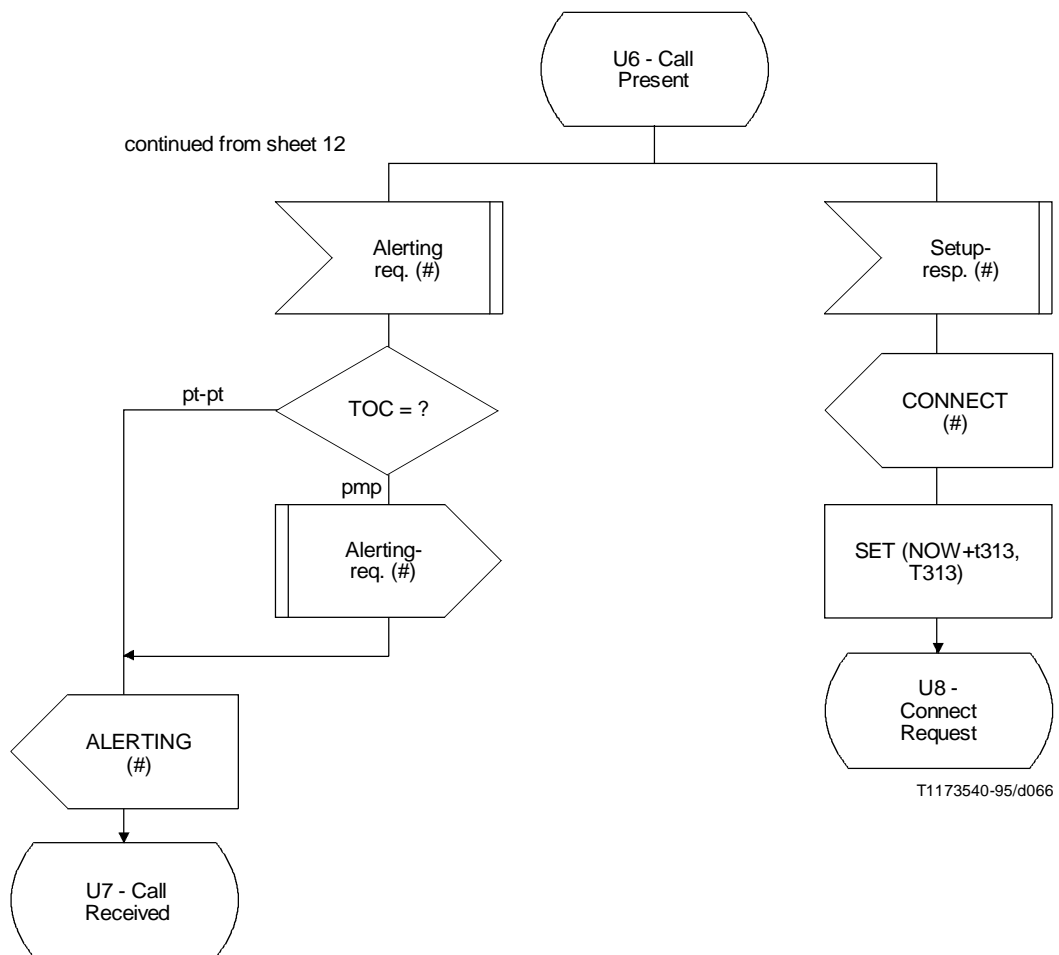


Process Call-Control-U
(Sheet 11 of 39)

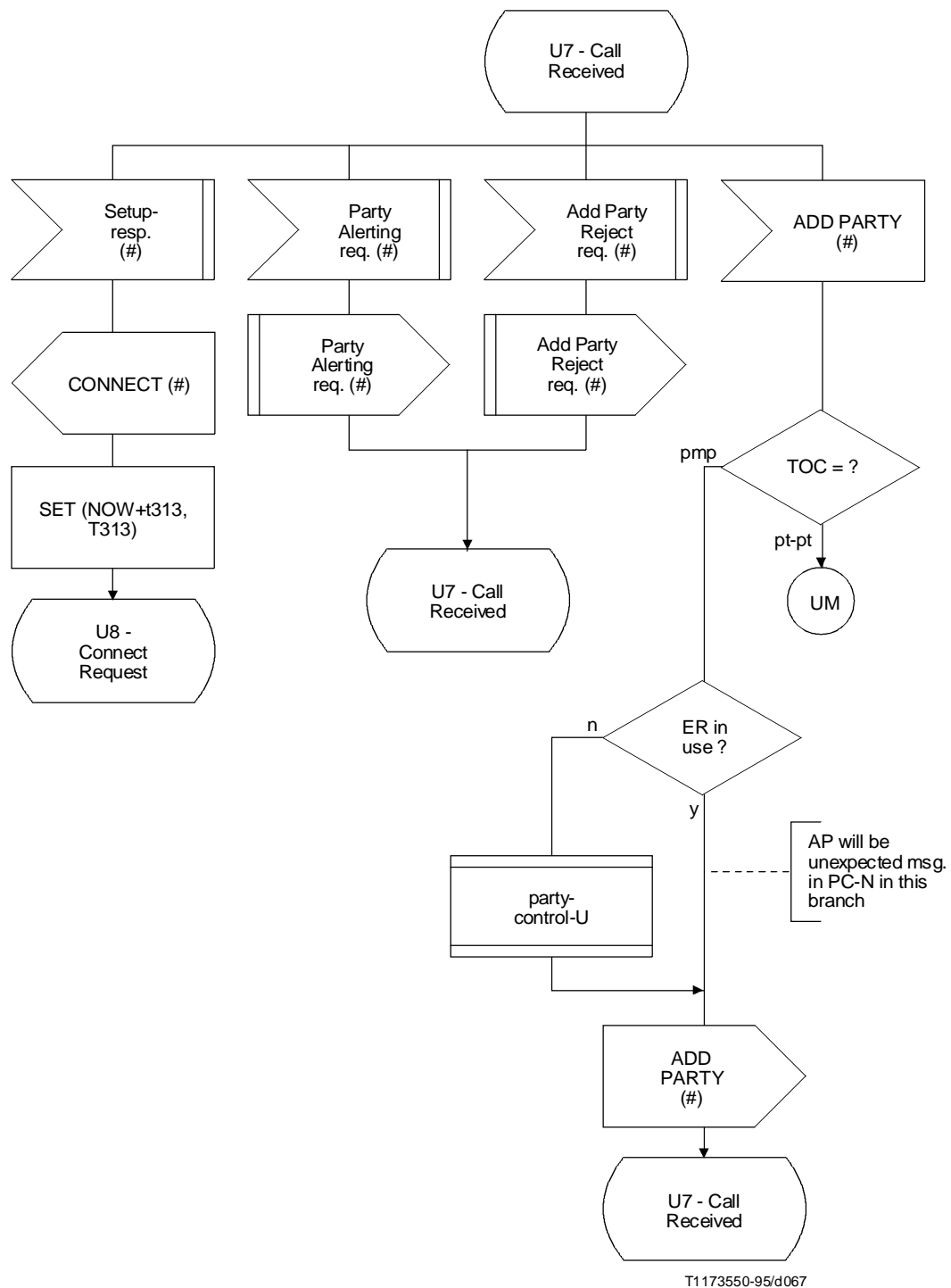


T1179330-96/d065

Process Call-Control-U
(Sheet 12 of 39)

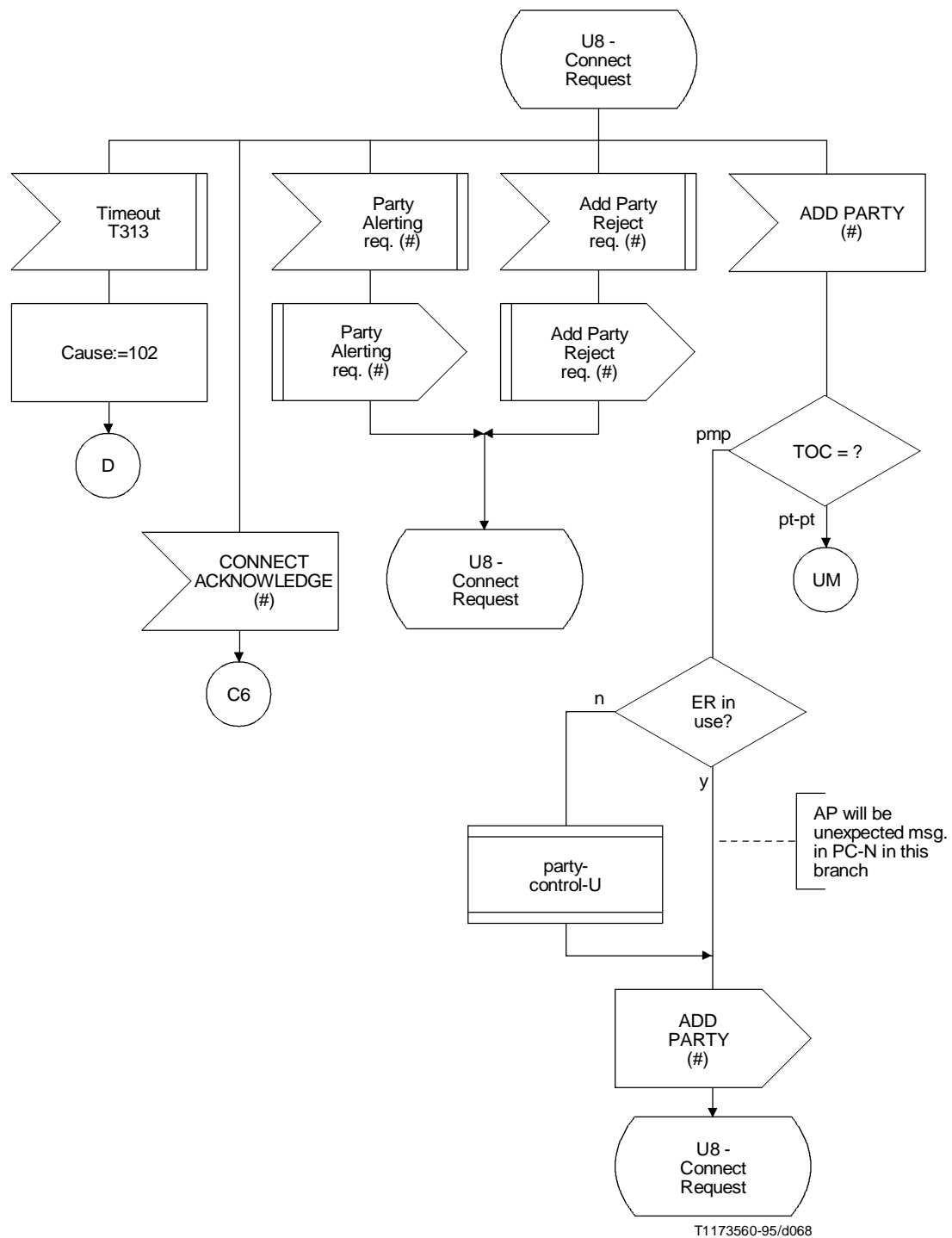


Process Call-Control-U
(Sheet 13 of 39)

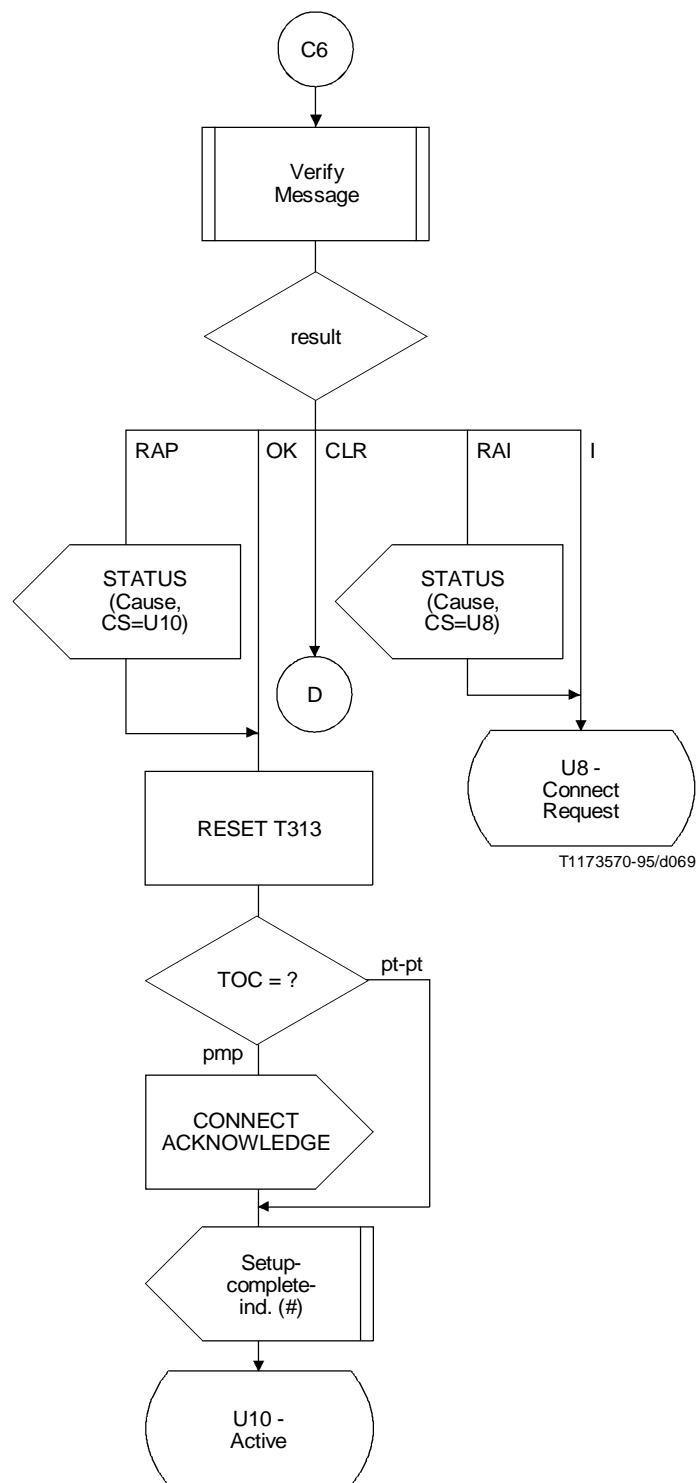


T1173550-95/d067

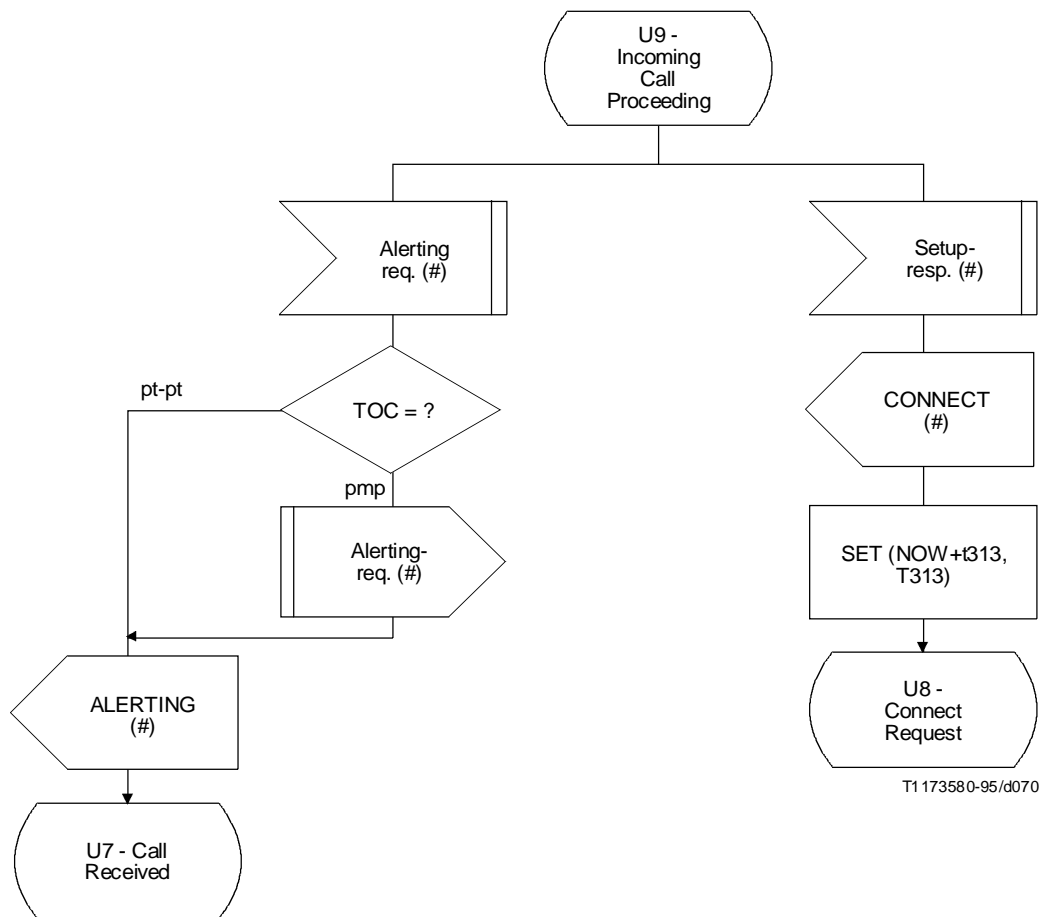
Process Call-Control-U
(Sheet 14 of 39)



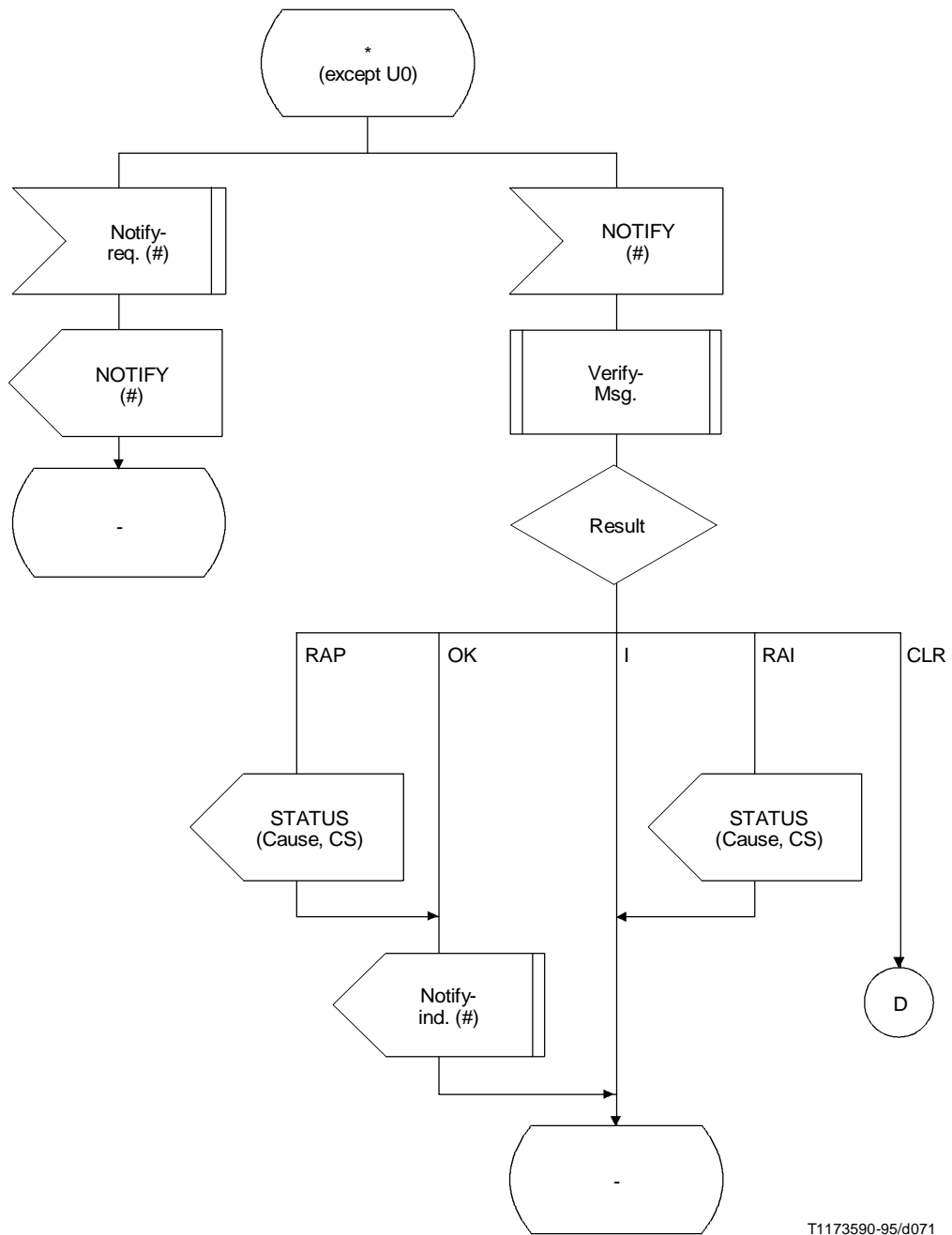
Process Call-Control-U
(Sheet 15 of 39)



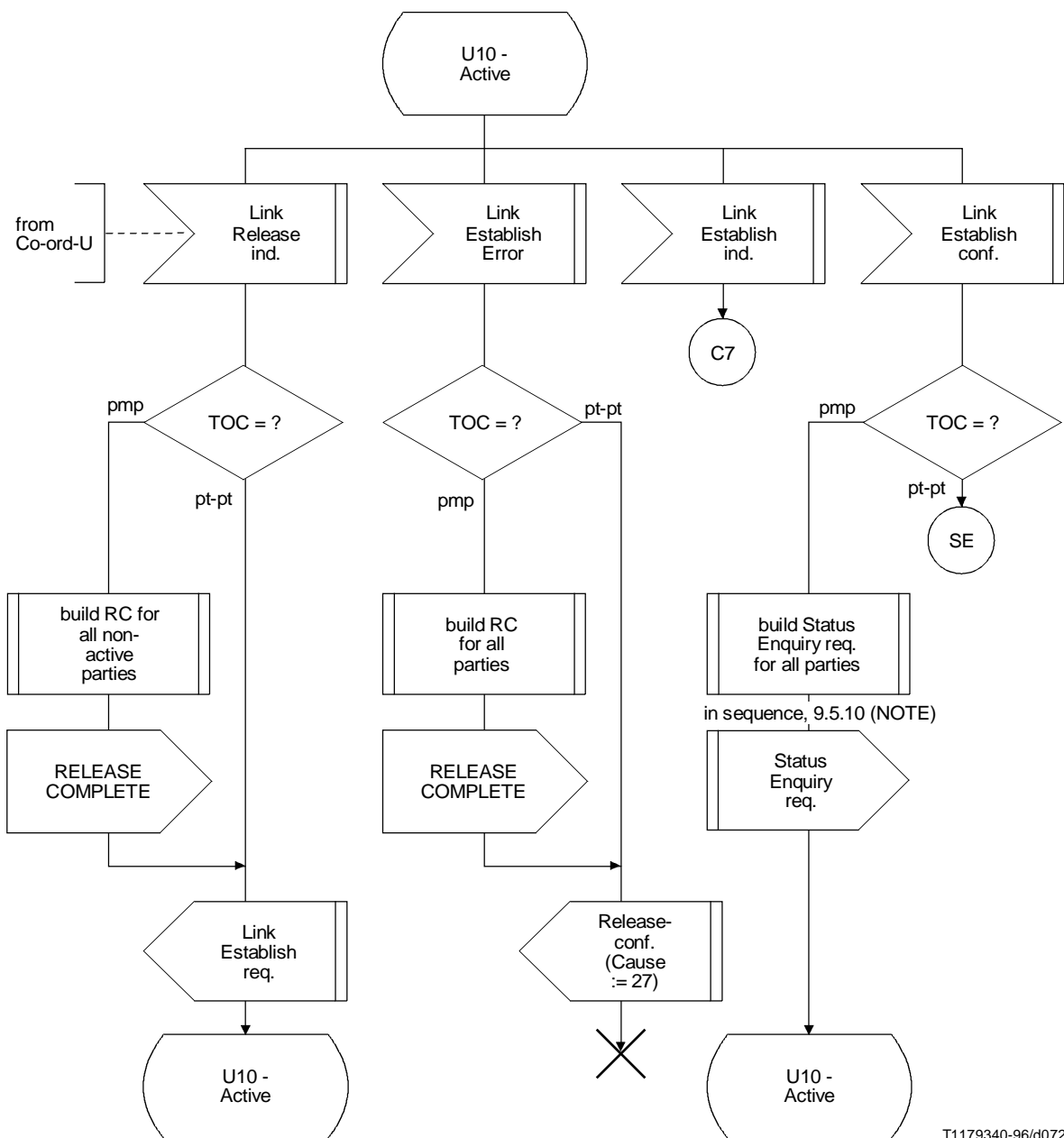
Process Call-Control-U
(Sheet 16 of 39)



Process Call-Control-U
(Sheet 17 of 39)

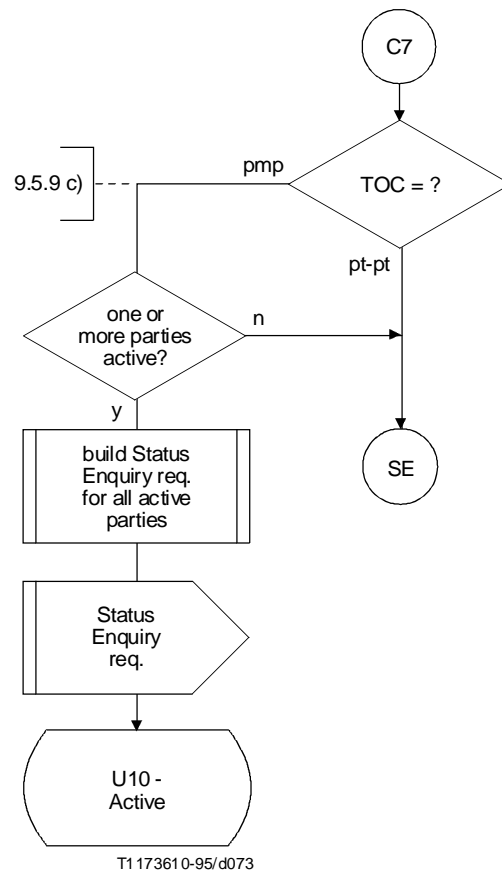


Process Call-Control-U
(Sheet 18 of 39)

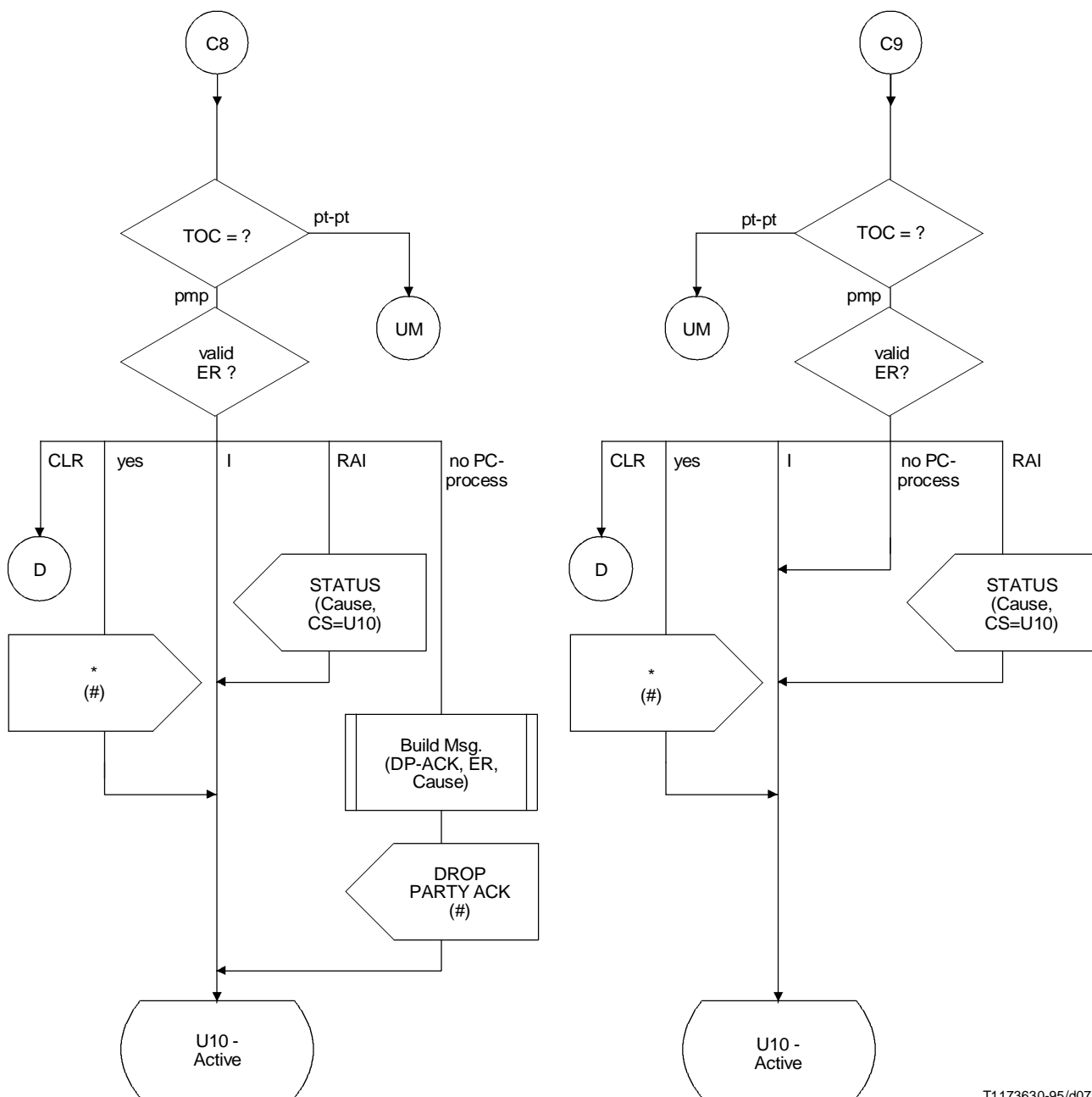


T1179340-96/d072

Process Call-Control-U
(Sheet 19 of 39)



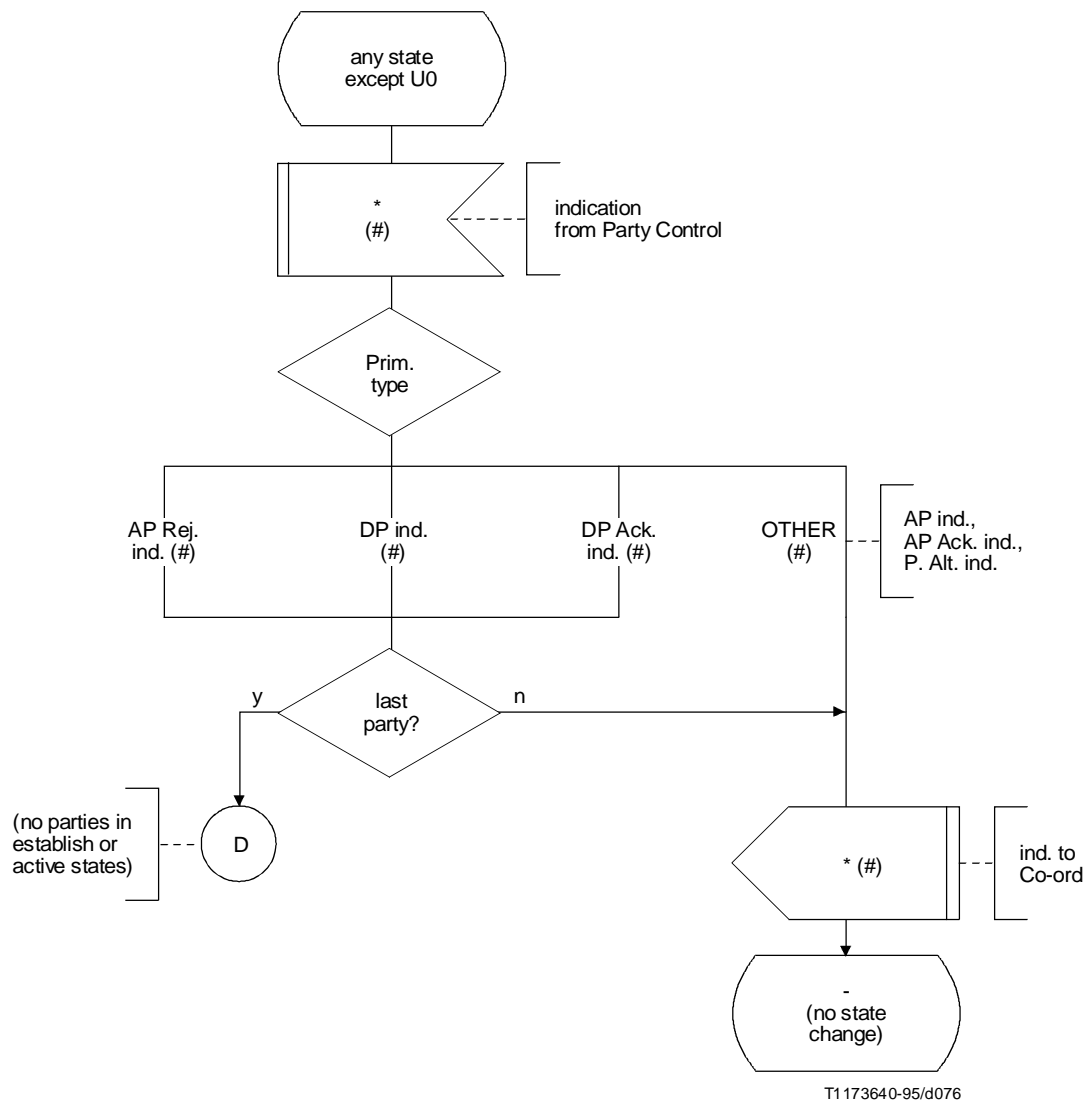
Process Call-Control-U
(Sheet 20 of 39)



T1173630-95/d075

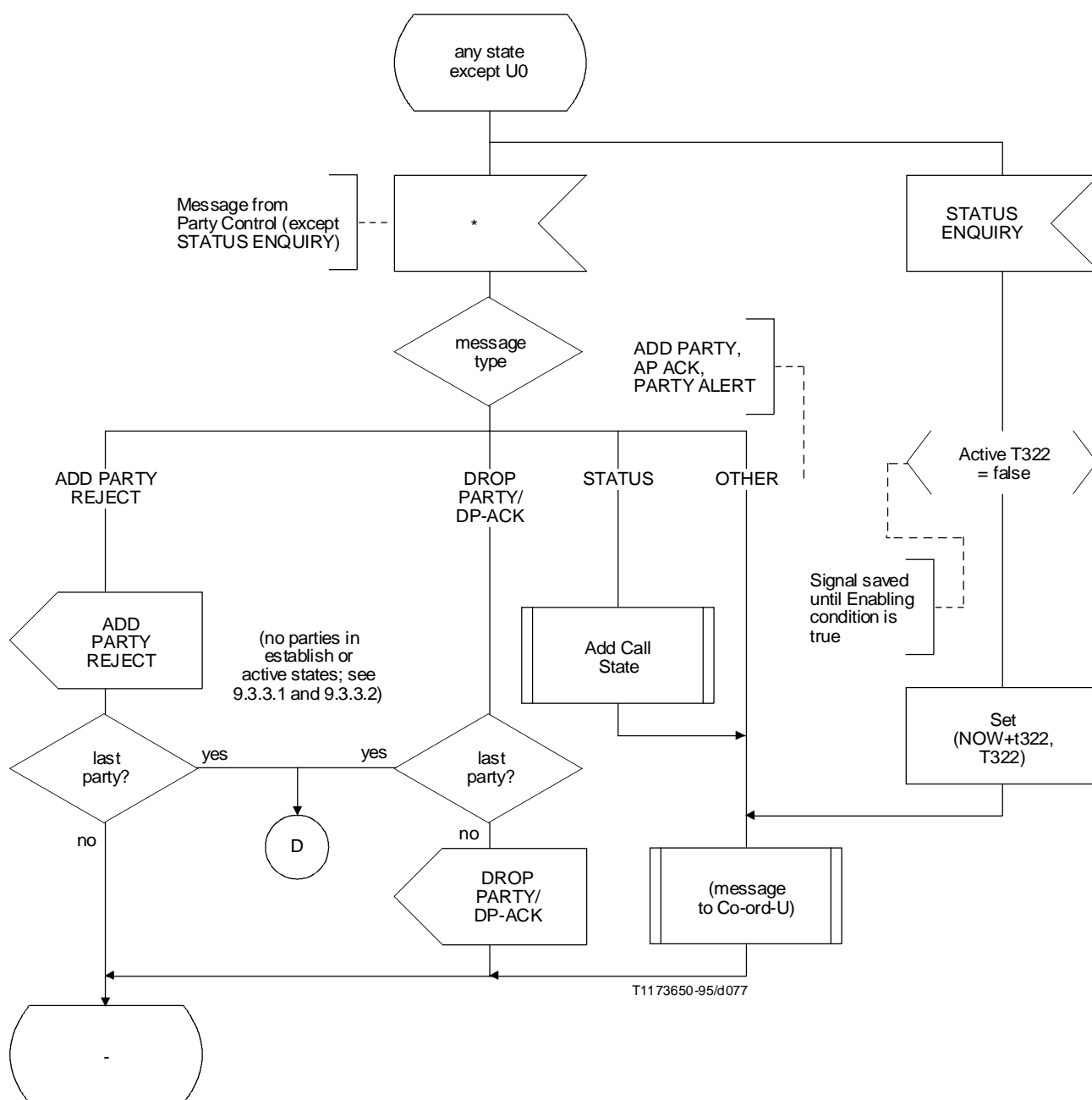
Process Call-Control-U

(Sheet 22 of 39)

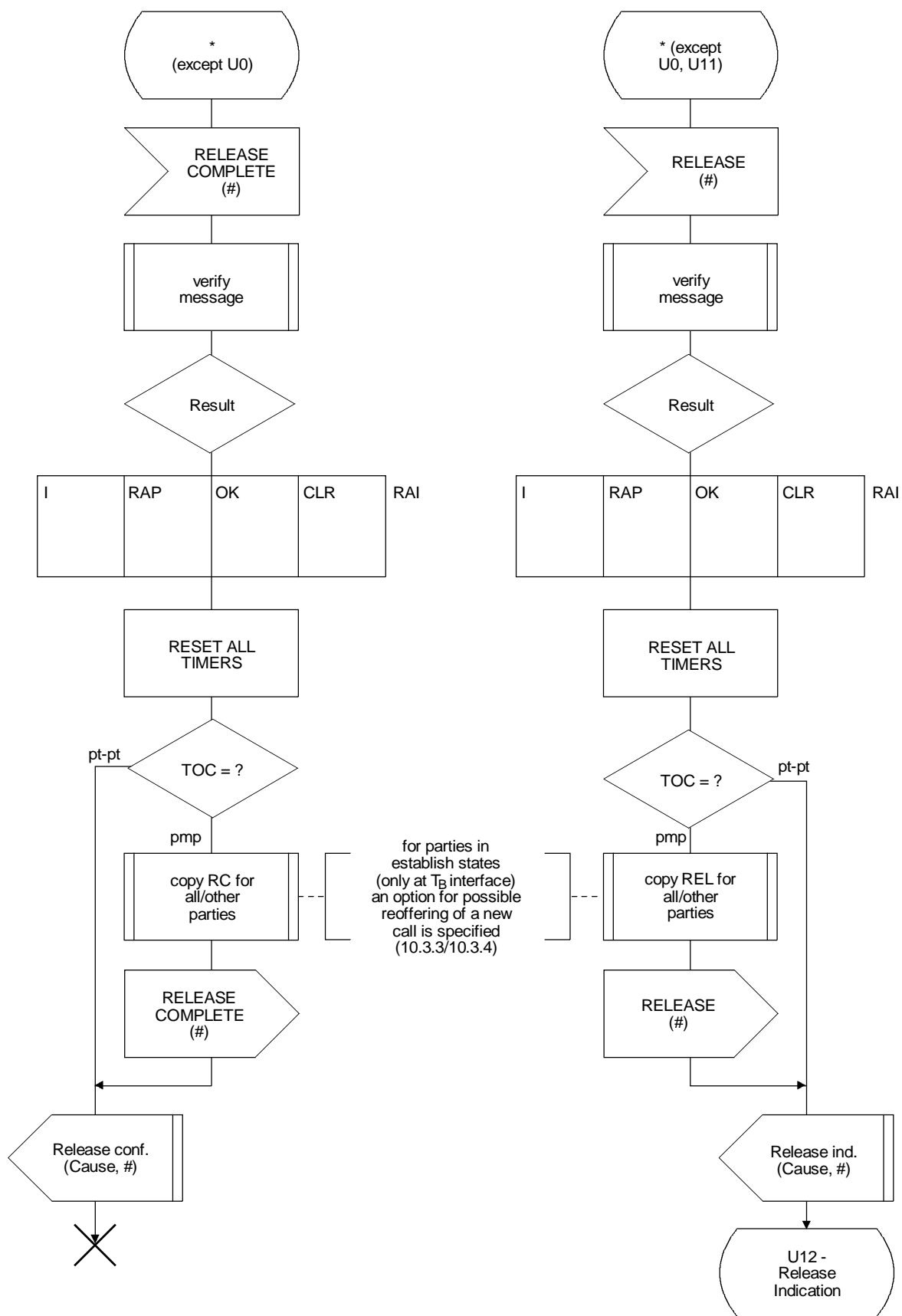


Process Call-Control-U

(Sheet 23 of 39)

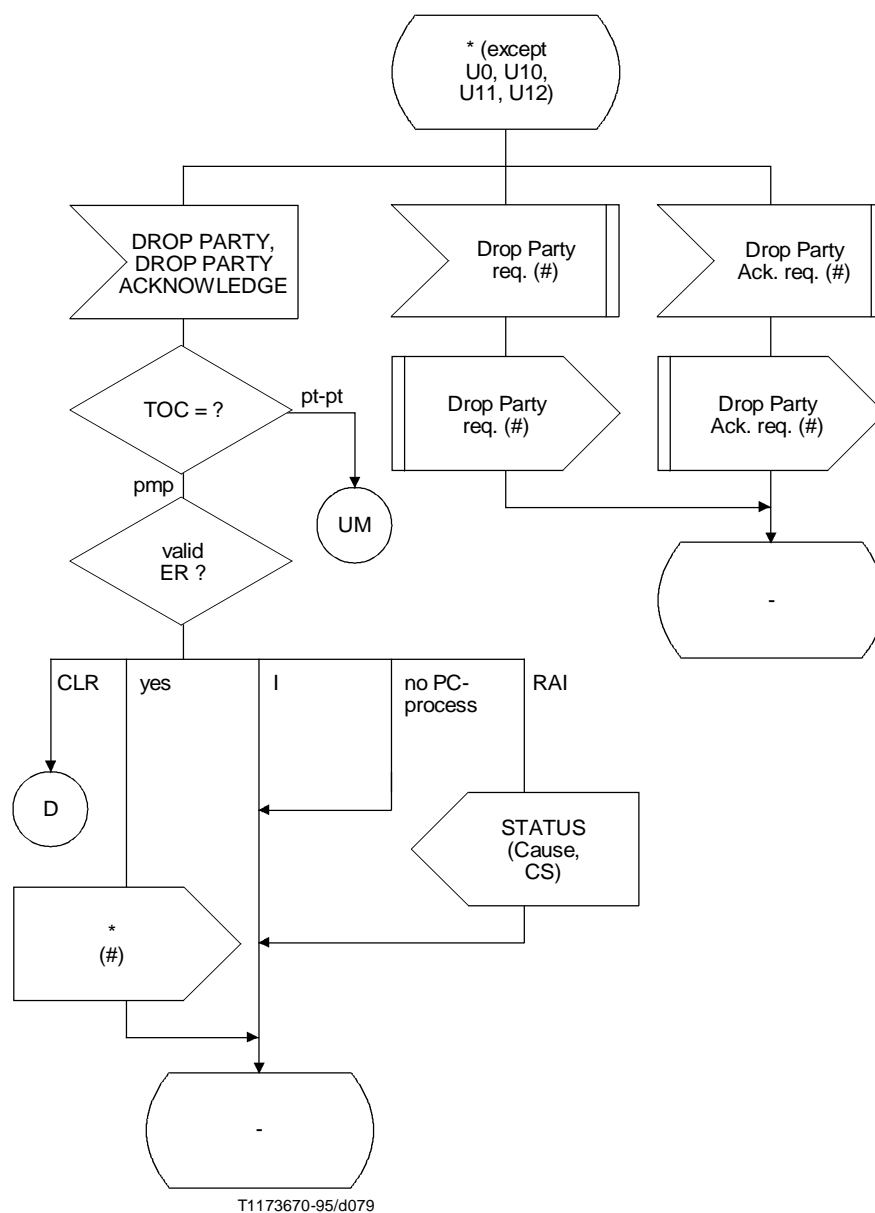


Process Call-Control-U
(Sheet 24 of 39)

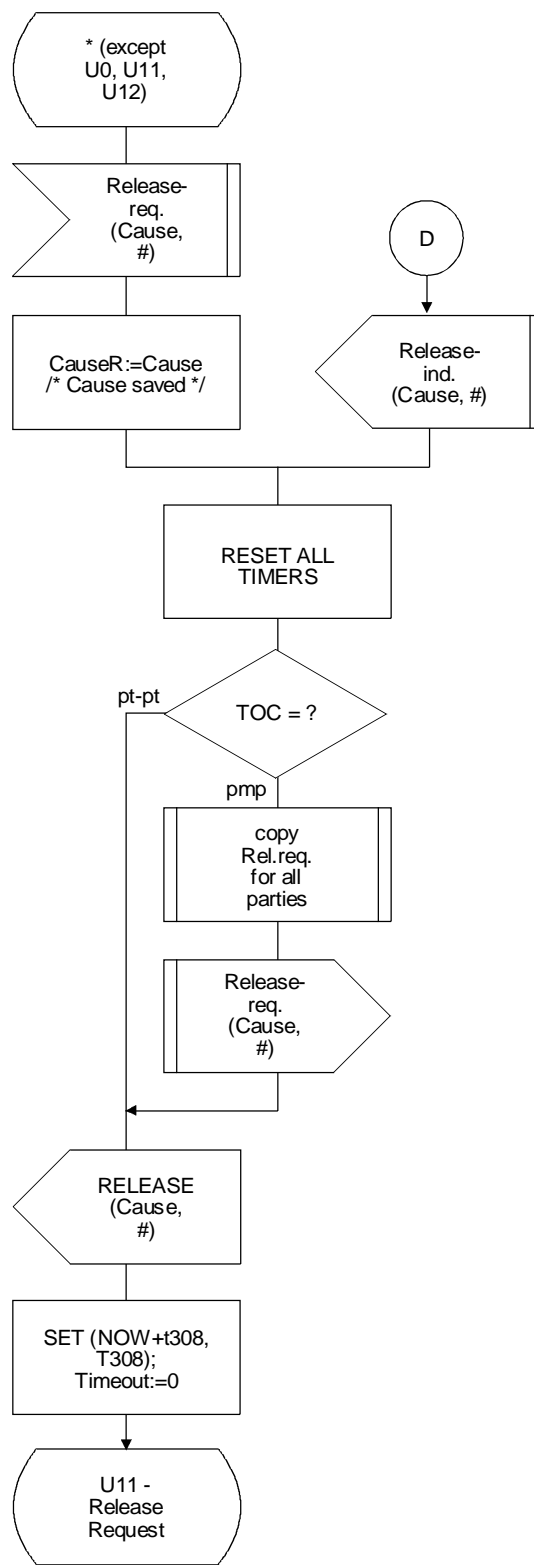


T1179350-96/d078

Process Call-Control-U
(Sheet 25 of 39)



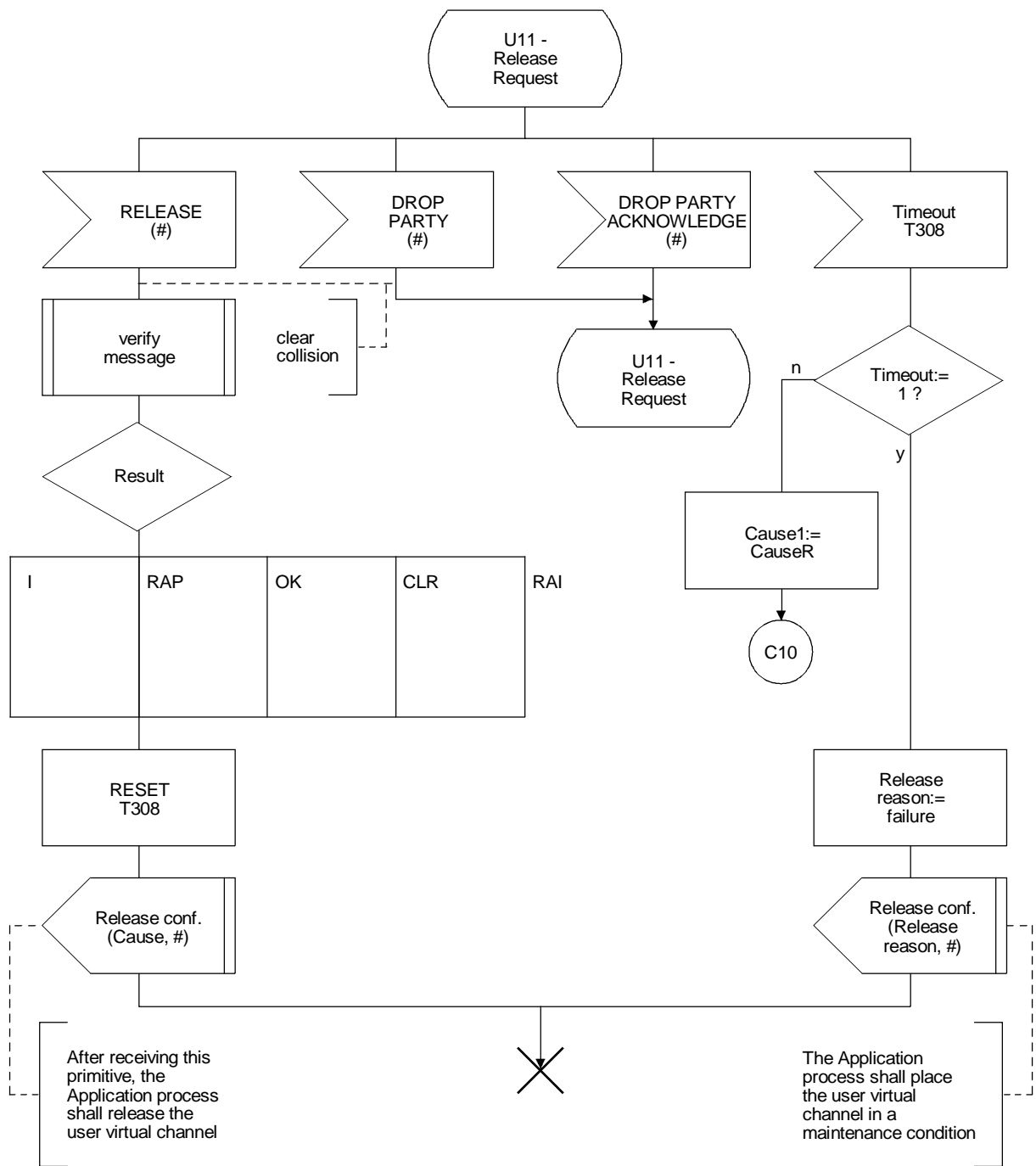
Process Call-Control-U
(Sheet 26 of 39)



T1173680-95/d080

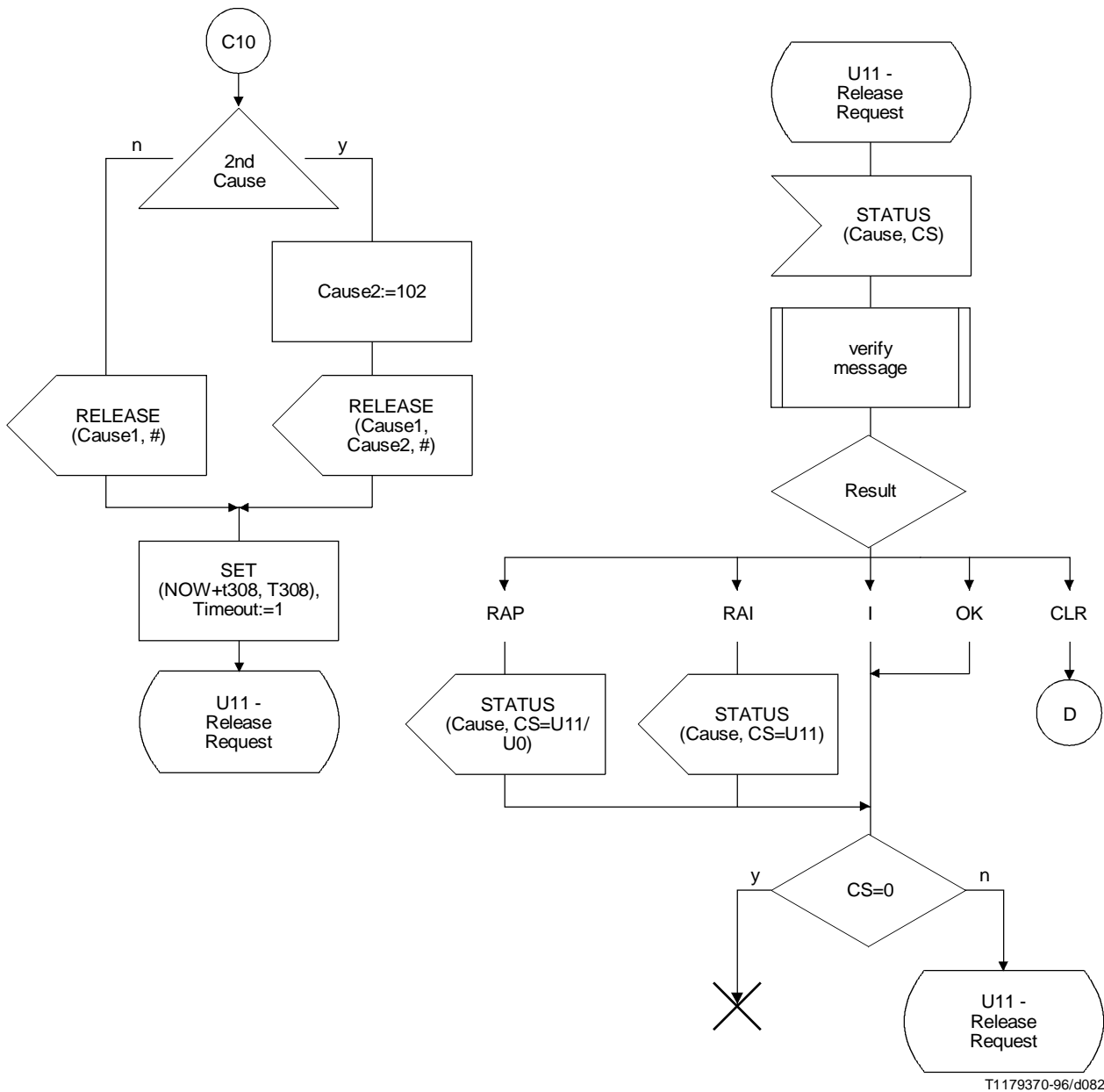
Process Call-Control-U

(Sheet 27 of 39)



T1179360-96/d081

Process Call-Control-U
(Sheet 28 of 39)



Process Call-Control-U
(Sheet 29 of 39)