

F.1.2.5.7 [SigList-7] (from Call-Control-N to Party-Control-N)

- Signals related to primitives:
 - Setup req.
 - Alerting req.
 - Setup resp.
 - Setup Complete req.
 - Release req.
 - Release resp.
 - Add Party req.
 - Add Party Acknowledge req.
 - Add Party Reject req.
 - Party Alerting req.
 - Drop Party req.
 - Drop Party Acknowledge req.
 - Party Status Enquiry req.
- Messages:
 - SETUP
 - ALERTING
 - RELEASE
 - RELEASE COMPLETE
 - STATUS ENQUIRY (incl. Endpoint reference)
 - STATUS (incl. Endpoint reference and Endpoint state)
 - ADD PARTY
 - ADD PARTY ACKNOWLEDGE
 - ADD PARTY REJECT
 - PARTY ALERTING
 - DROP PARTY
 - DROP PARTY ACKNOWLEDGE

F.1.2.5.8 [SigList-8] (from Party-Control-N to Call-Control-N)

- Signals related to primitives:
 - Add Party ind.
 - Add Party Acknowledge ind.
 - Add Party Reject ind.
 - Party Alerting ind.
 - Drop Party ind.
 - Drop Party Acknowledge ind.
- Messages:
 - ADD PARTY
 - ADD PARTY ACKNOWLEDGE
 - ADD PARTY REJECT
 - PARTY ALERTING
 - DROP PARTY
 - DROP PARTY ACKNOWLEDGE
 - STATUS ENQUIRY (incl. Endpoint reference)

- STATUS (incl. Endpoint reference and Endpoint state)

F.1.3 PROCESS Co-ord-N: State event diagram

Although the process Co-ord-N in Recommendation Q.2971 handles additional primitives and signals, the SDL description of Annex A/Q.2931 remains valid with only the following editorial or technical changes:

- Global modification related to terminology:
The name of the process "Q.2931-N" has to be replaced by "Call-Control-N".
- Transfer of a Status Enquiry req. from AP via Co-ord-N to Call-Control-N has to be added.
- Reception of a Reset-req. or a RESTART message trigger the Co-ord-N to send a Release resp. or RELEASE COMPLETE, respectively, to all Call-Control-N processes affected.

F.1.4 Process Call-Control-N: Overview State-Event-Diagram (does not include Timer Expires)

[Numbers show sheet no. (sheet 1 of 39); empty fields show events not described/applicable; IW N-ISDN not incl.]

State Event (5.1, 5.8)	N0	N1	N3	N4	N6	N7	N8	N9	N10	N11	N12
(from Co-ord N:)											
Setup-req.	4, 5										
Proceeding-req.		6									
Alerting-req.		38	7								
Setup-resp.		38	7	8							
Setup-compl.-req.							15				
Release-req.		28	28	28	28	28	28	28	28		
Release-resp.		6								29	
Notify-req.		19	19	19	19	19	19	19	19	19	19
Link Establish conf.									20		
Link Establish ind.		37	37	37	37	37	37	37	20, 21	37	37
Link Release ind.	37	37	37	37	37	37	37	37	20	37	37
Link Establish error									20		
SETUP	4, 5										
CALL PROC.		36	36	36	11	36	36	36	36	36	36
ALERTING		36	36	36	9, 10	36	36	17	36	36	36
CONNECT		36	36	36	9, 10	14	36	17	36	36	36
CONNECT ACK.		36	36	36	36	36	36	36	18	36	36
RELEASE		26	26	26	26	26	26	26	26	26	30
RELEASE COMP.		26	26	26	26	26	26	26	26	26	26
STATUS		33, 34	33, 34	33, 34	33, 34	33, 34	33, 34	33, 34	33, 34	29	31
STATUS ENQUIRY		32	32	32	32	32	32	32	32	32	32
NOTIFY		19	19	19	19	19	19	19	19	19	19

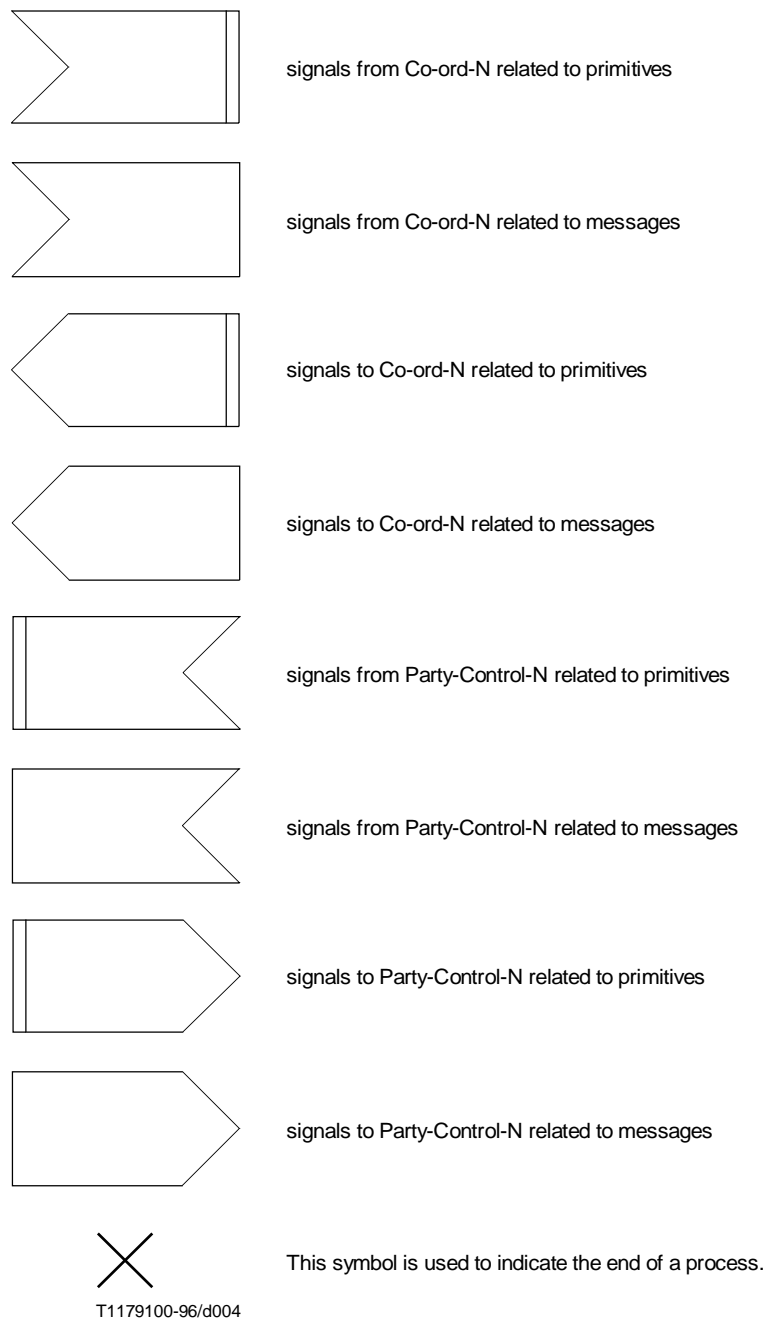
Process Call-Control-N (Sheet 1 of 39)

State	N0	N1	N3	N4	N6	N7	N8	N9	N10	N11	N12
Event (5.1, 5.8)											
Add Party req.						12, 13			22		
Add Party Ack. req.									22		
Add Party Rej. req.				8					22		
Party Alerting req.				8					22		
Drop Party req.		27	27	27	27	27	27	27	22		
DP Ack. req.		27	27	27	27	27	27	27	22		
Status Enq. req.		32	32	32	32	32	32	32	32	32	32
ADD PARTY		36	36	8	36	36	36	36	22	36	36
ADD PARTY ACK.		36	36	36	36	36	15	36	22, 23	36	36
ADD PARTY REJ.		36	36	36	36	12	15, 16	36	22, 23	36	36
PARTY ALERTING		36	36	36	36	12	15, 16	36	22, 23	36	36
DROP PARTY		27	27	27	27	27	27	27	22, 23	29	30
DP ACK.		27	27	27	27	27	27	27	22, 23	29	30
(from PC-N)											
Add Party ind.		24	24	24	24	24	24	24	24	24	24
Add Party Ack. ind.		24	24	24	24	24	24	24	24	24	24
Add Party Rej. ind.		24	24	24	24	24	24	24	24	24	24
Party Alerting ind.		24	24	24	24	24	24	24	24	24	24
Drop Party ind.		24	24	24	24	24	24	24	24	24	24
Drop Party Ack. ind.		24	24	24	24	24	24	24	24	24	24
ADD PARTY		25	25	25	25	25	25	25	25	25	25
ADD PARTY ACK.		25	25	25	25	25	25	25	25	25	25
ADD PARTY REJ.		25	25	25	25	25	25	25	25	25	25
PARTY ALERTING		25	25	25	25	25	25	25	25	25	25
DROP PARTY		25	25	25	25	25	25	25	25	25	25
DP ACK.		25	25	25	25	25	25	25	25	25	25
STATUS ENQ.(ER)		25	25	25	25	25	25	25	25	25	25
STATUS (ER, ES)		25	25	25	25	25	25	25	25	25	25

Process Call-Control-N
(Sheet 2 of 39)

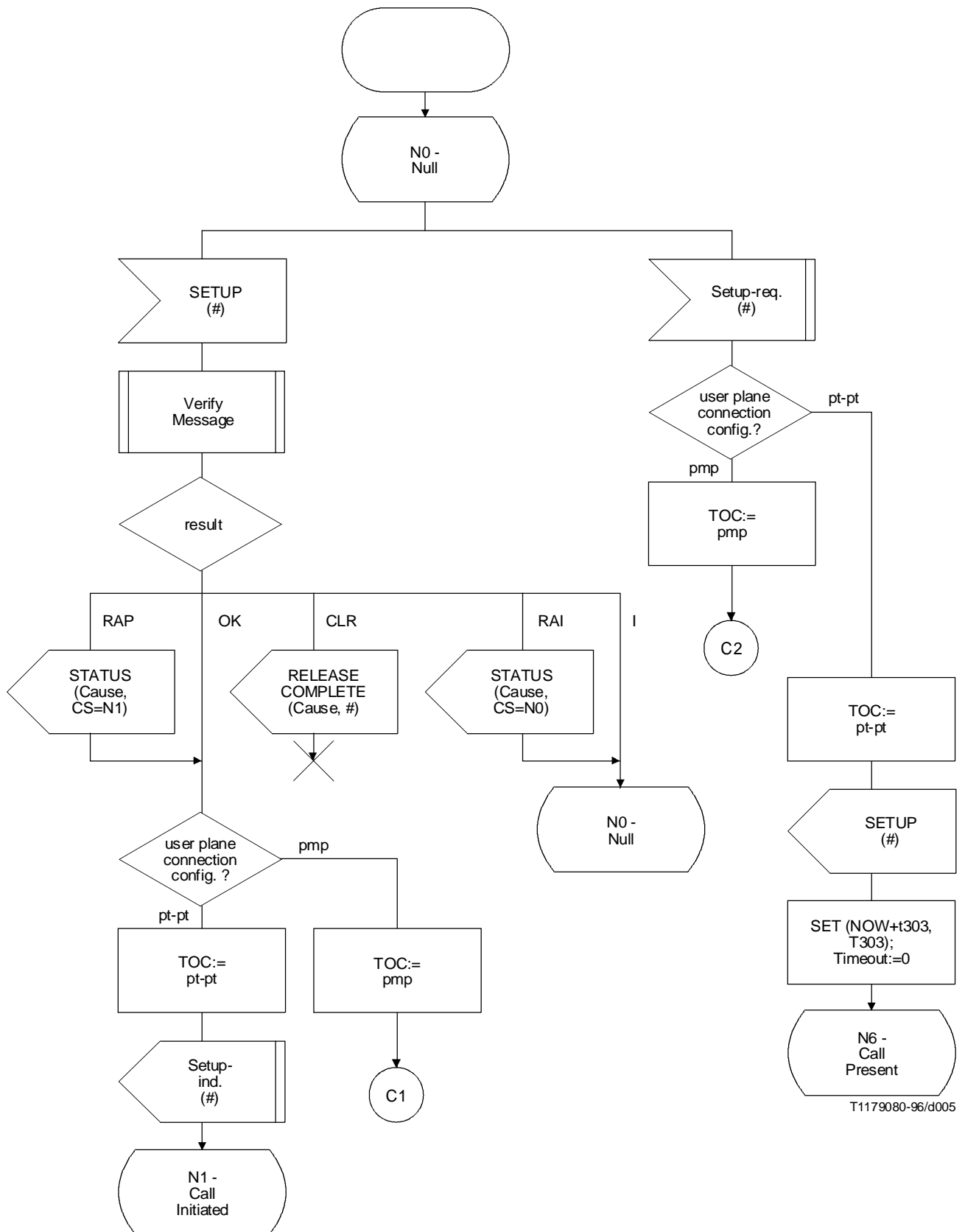
Process Call-Control-N – Legend

See Recommendation Q.2931, SDL Key; in addition:



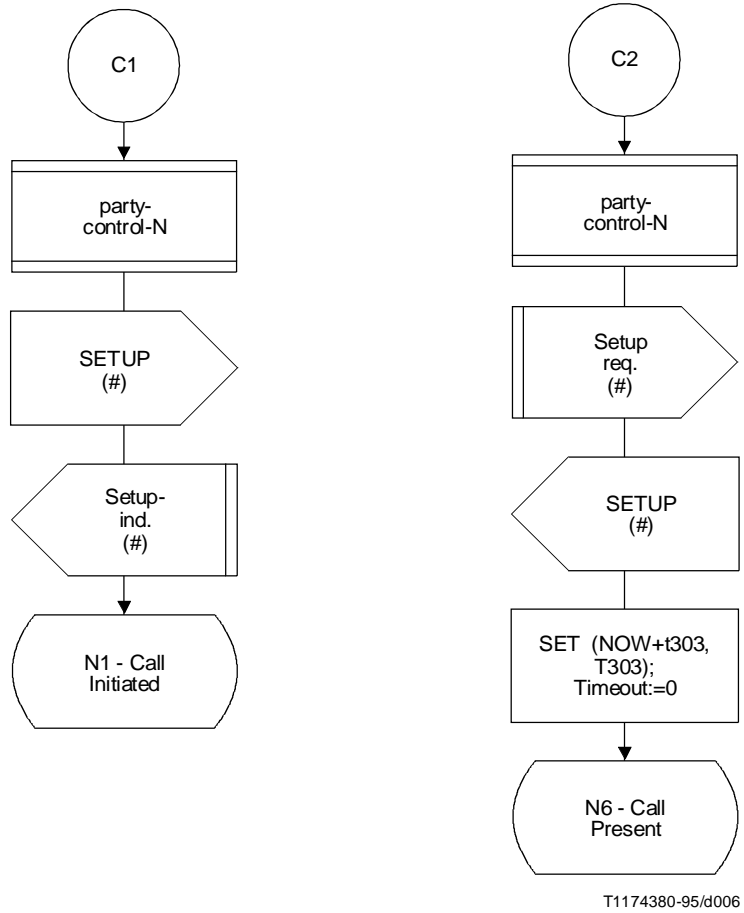
T1179100-96/d004

NOTE – If a STATUS message has to be returned in a point-to-multipoint call/connection as a result of an error situation (see 9.5.4, 9.5.7, 9.5.8), it shall include ER and ES. However, to avoid unnecessary complexity, this is not explicitly shown in the attached Call-Control-N SDLs.

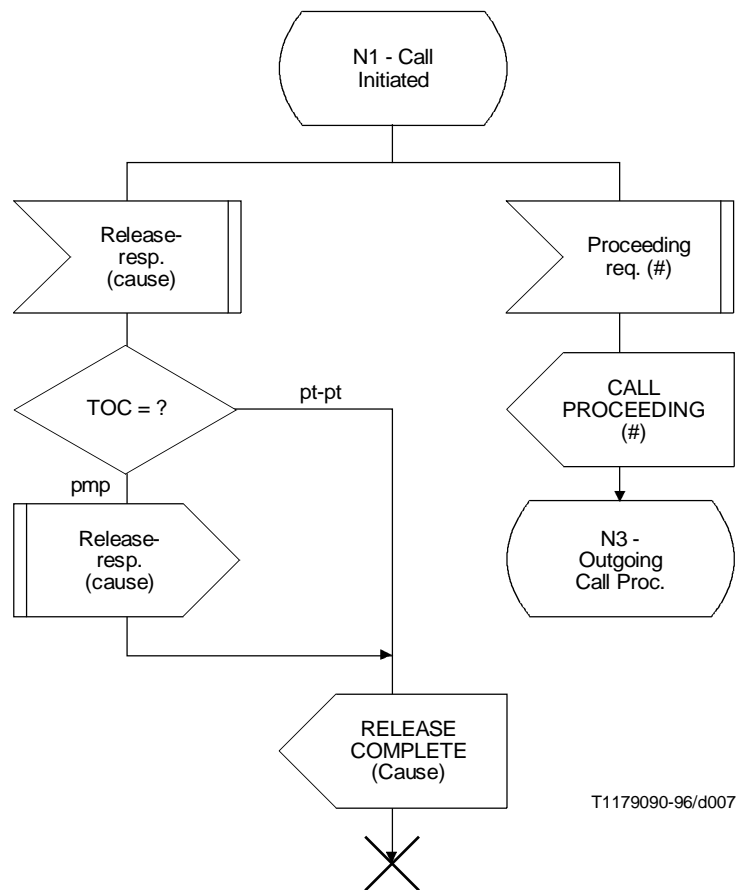


T1179080-96/d005

Process Call-Control-N
(combined point-to-point and point-to-multipoint procedures)
(Sheet 4 of 39)

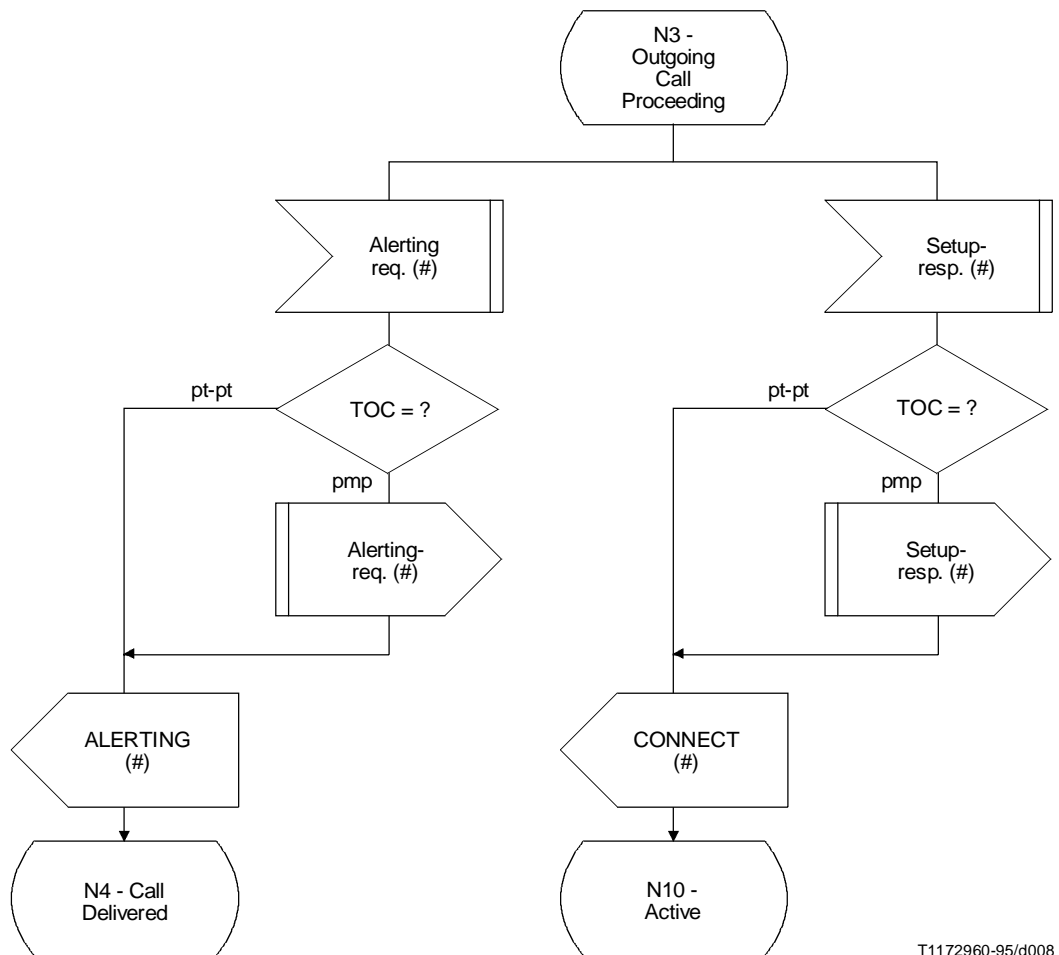


Process Call-Control-N
(Sheet 5 of 39)



T1179090-96/d007

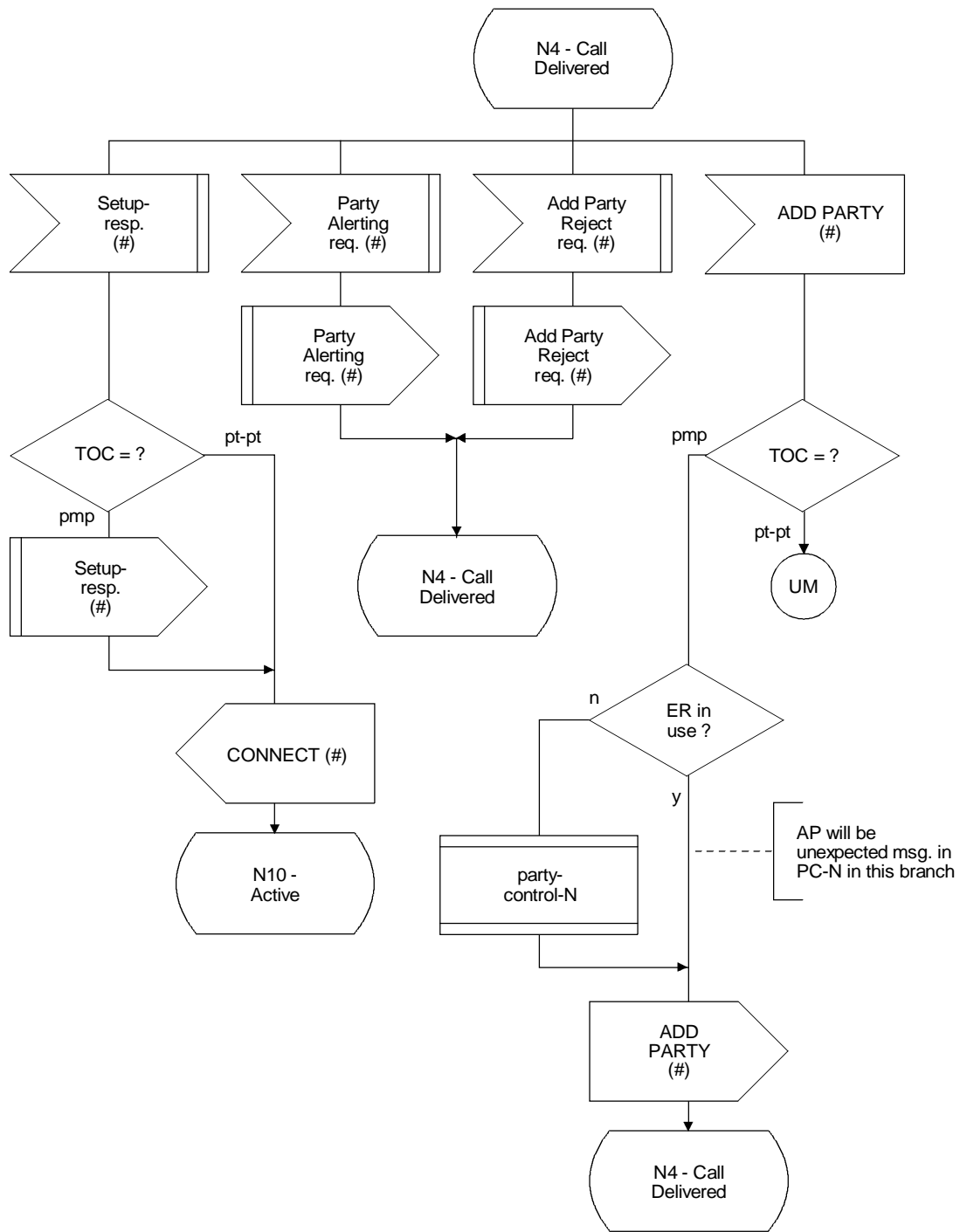
Process Call-Control-N
(Sheet 6 of 39)



T1172960-95/d008

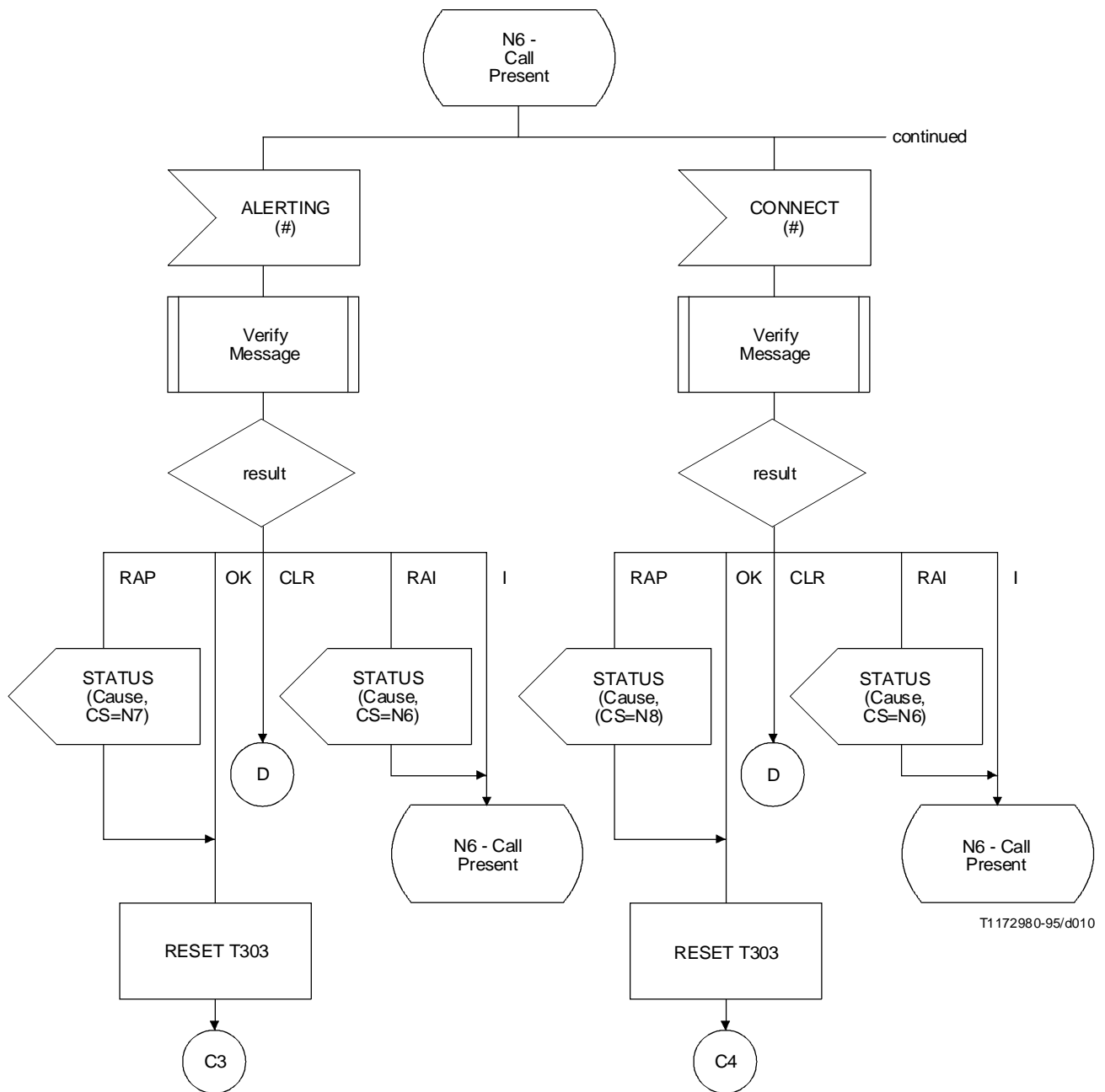
Process Call-Control-N

(Sheet 7 of 39)



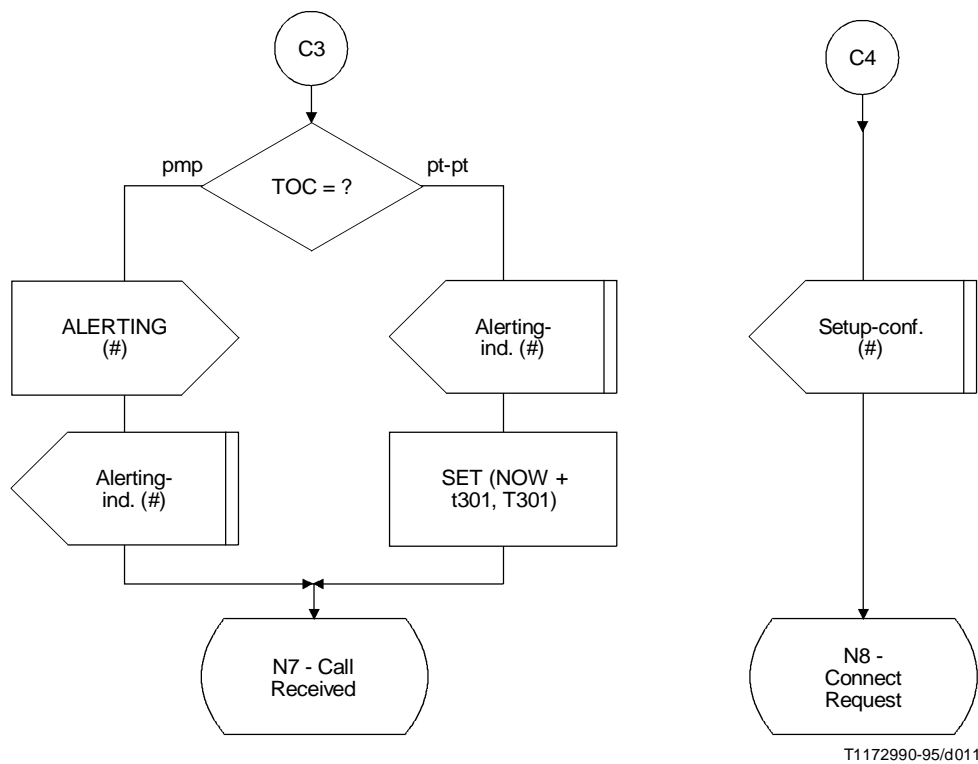
T1172970-95/d009

Process Call-Control-N
(Sheet 8 of 39)

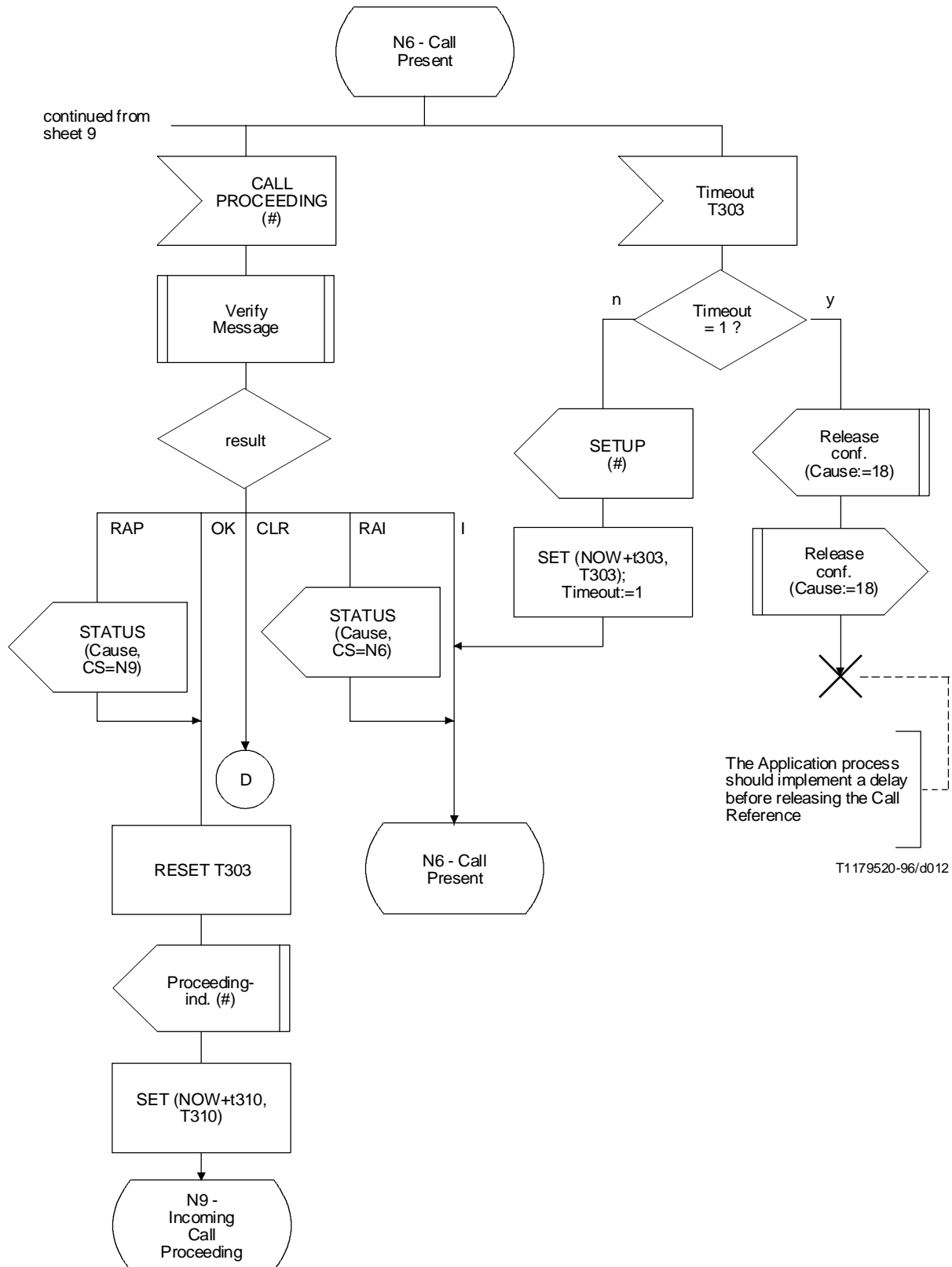


T1172980-95/d010

Process Call-Control-N
(Sheet 9 of 39)

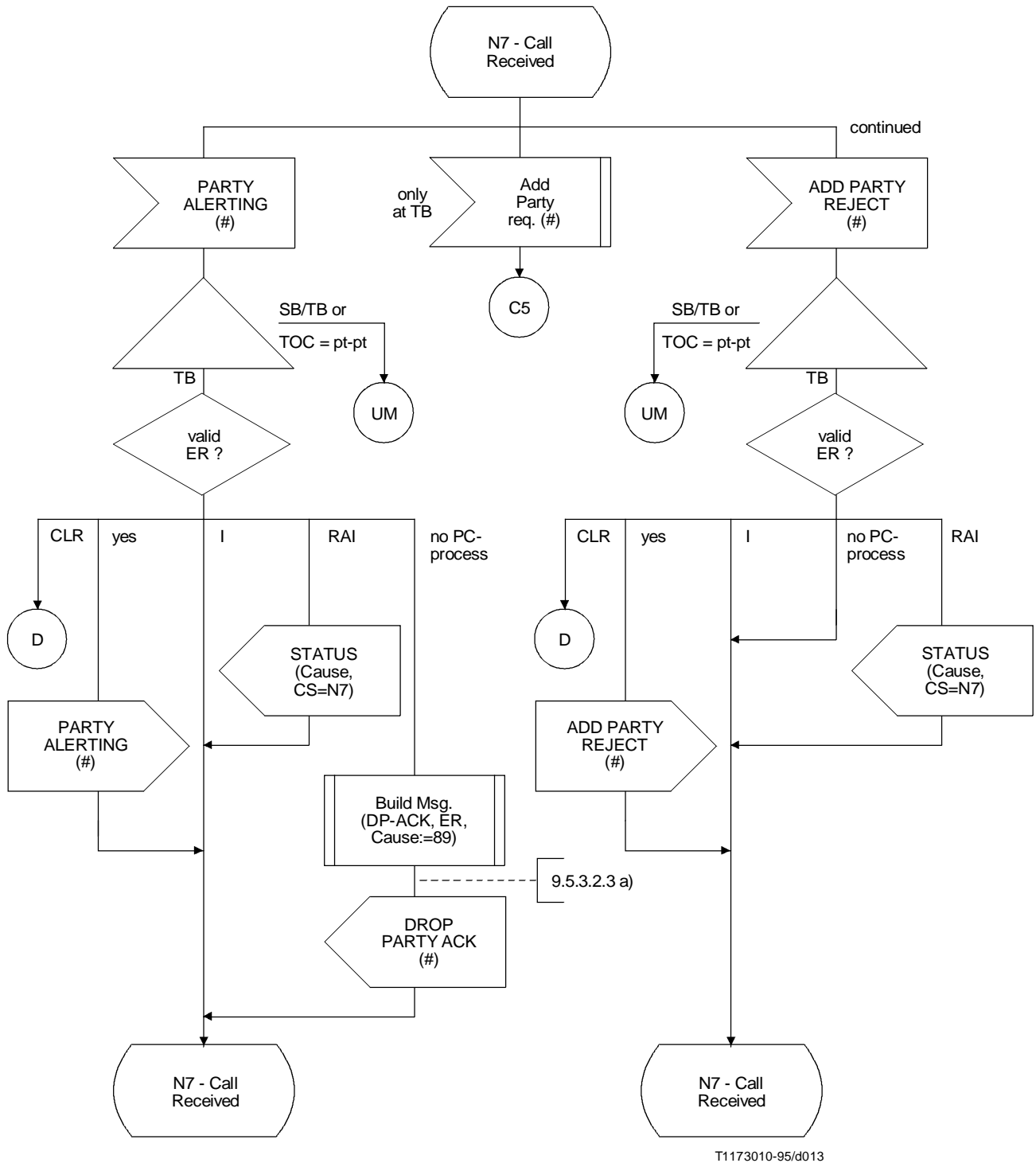


Process Call-Control-N
(Sheet 10 of 39)

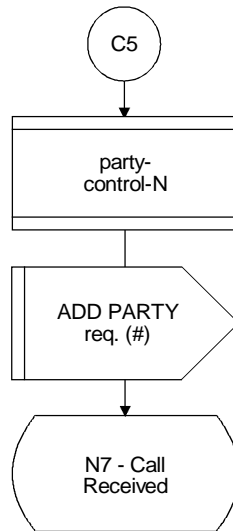


Process Call-Control-N

(Sheet 11 of 39)

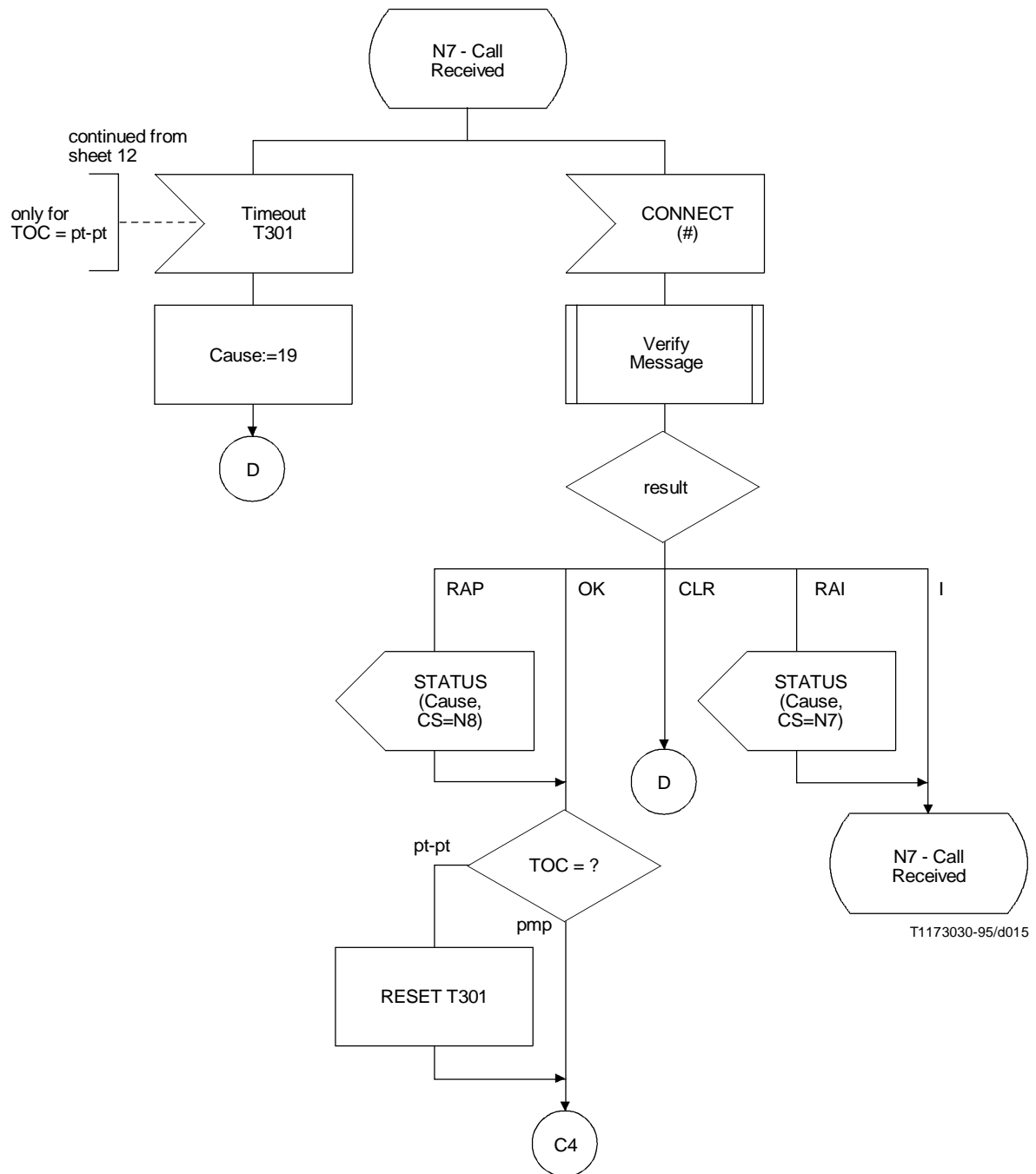


Process Call-Control-N
(Sheet 12 of 39)

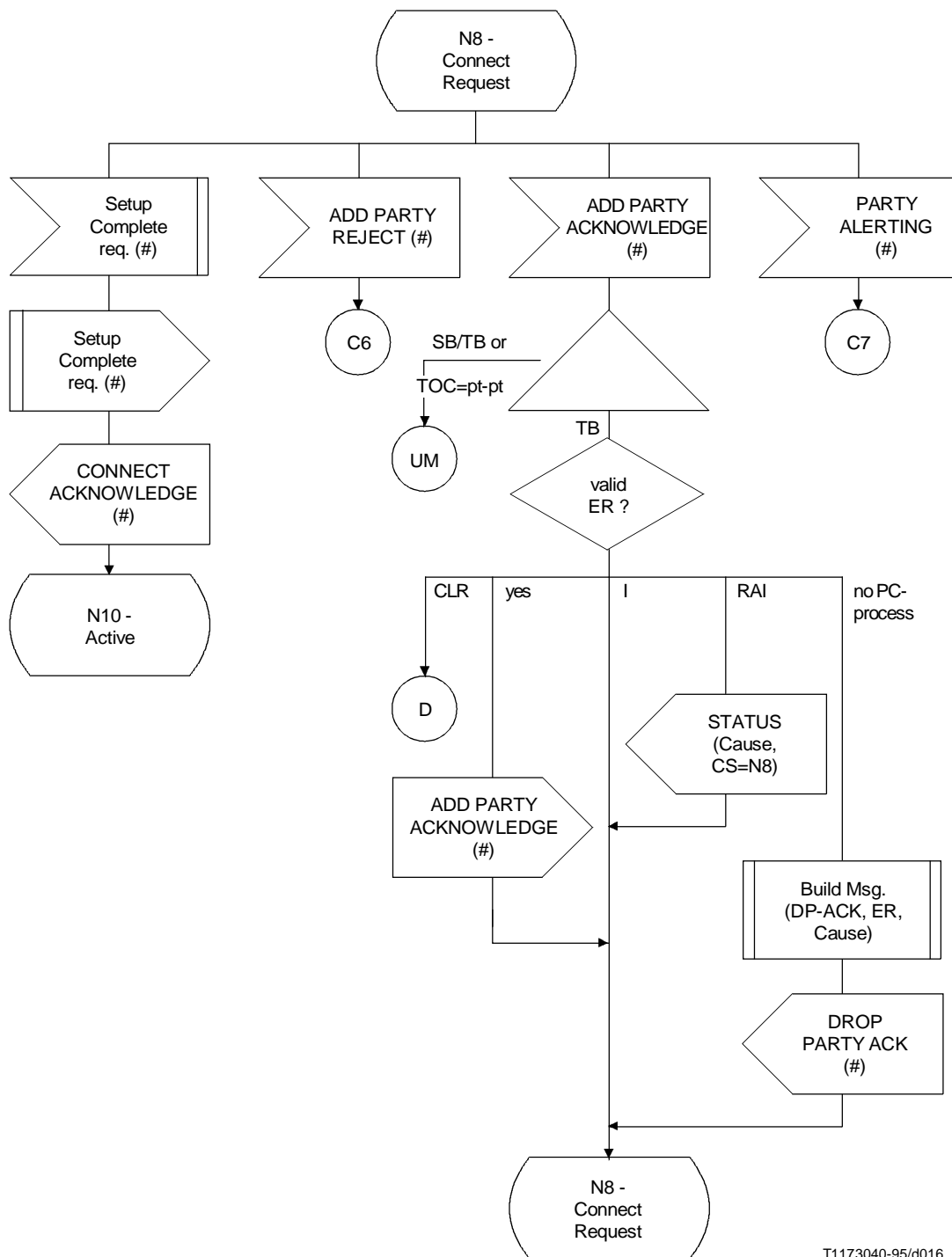


T1173020-95/d014

Process Call-Control-N
(Sheet 13 of 39)



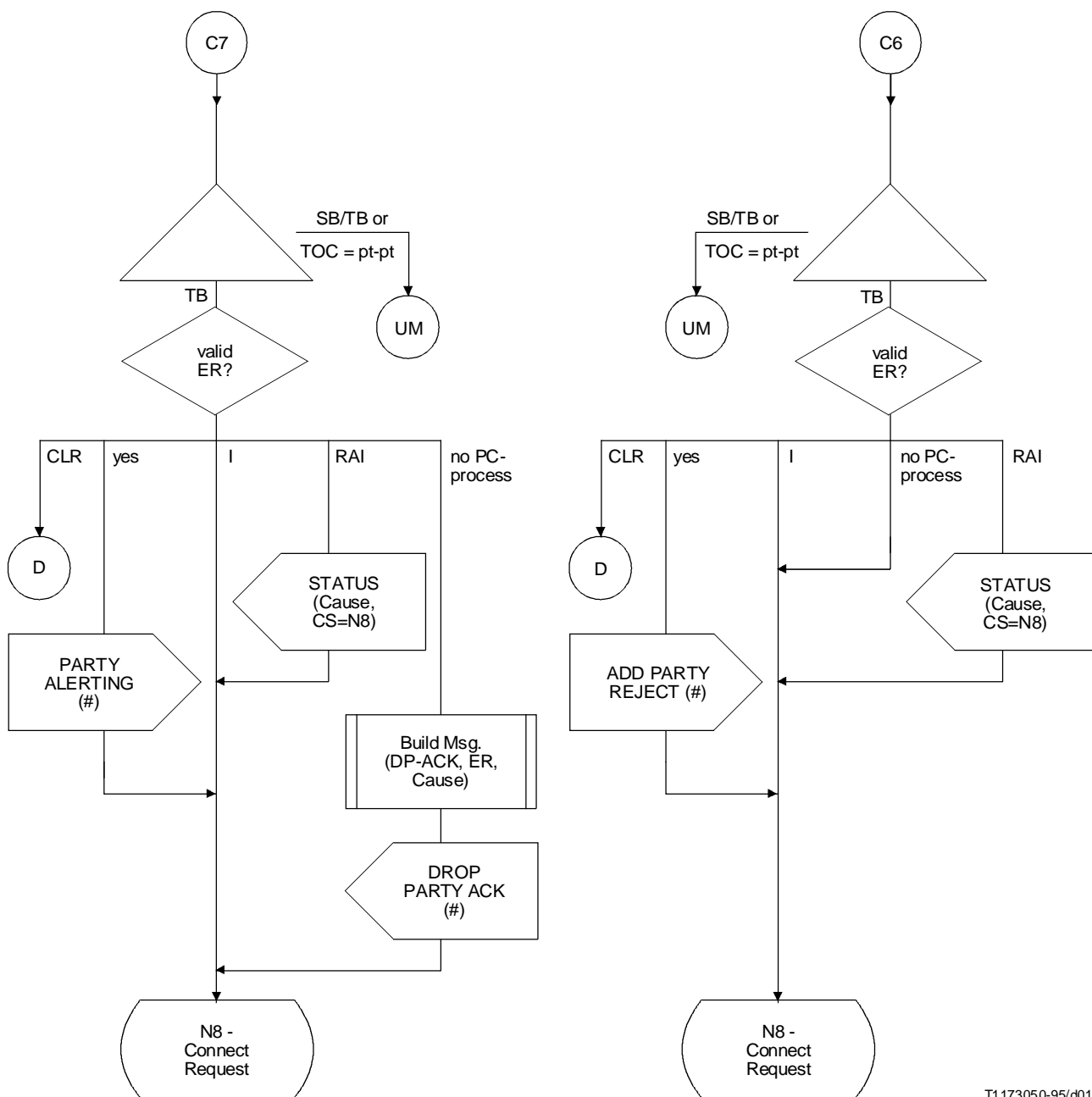
Process Call-Control-N
(Sheet 14 of 39)



T1173040-95/d016

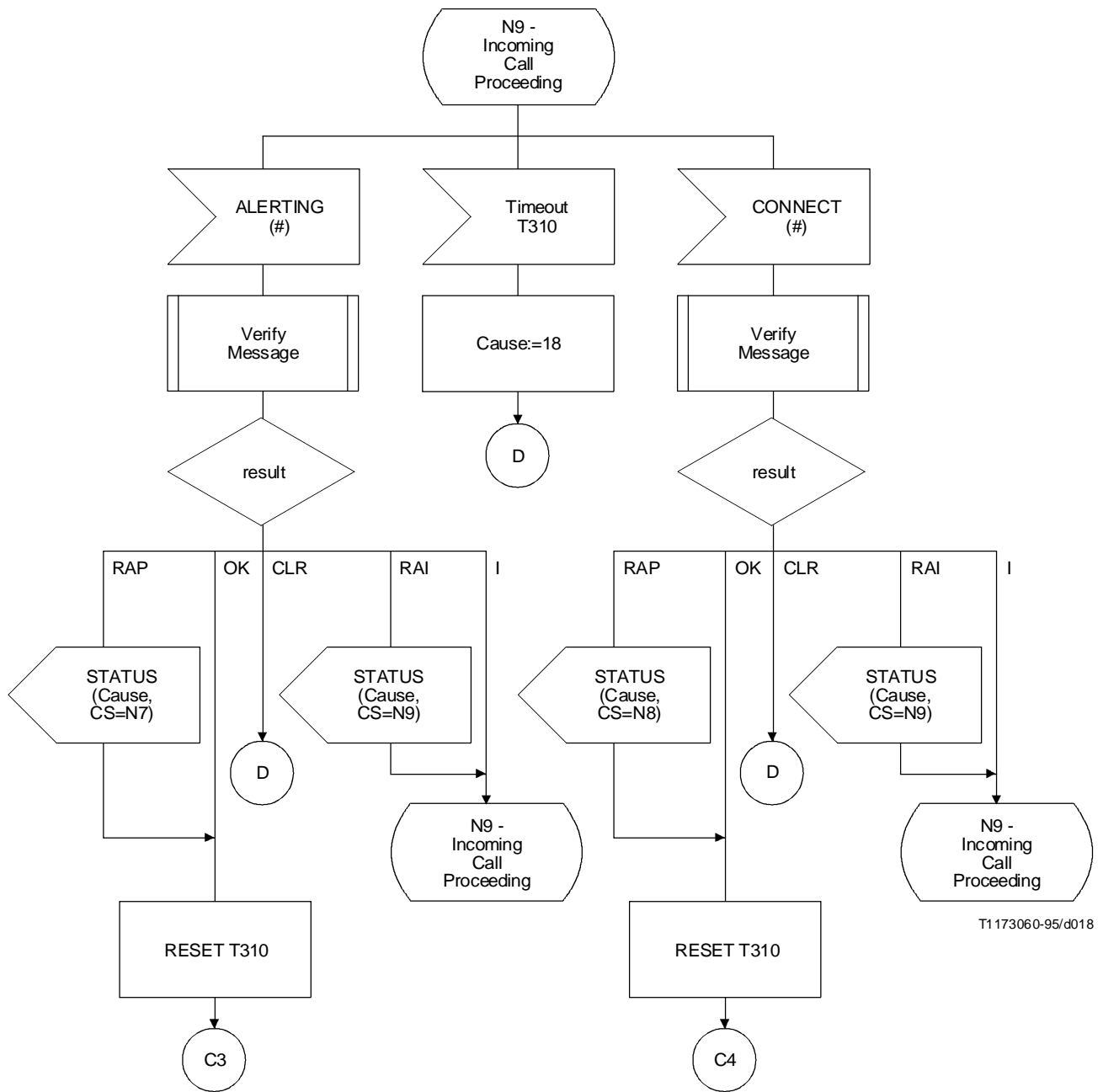
Process Call-Control-N

(Sheet 15 of 39)

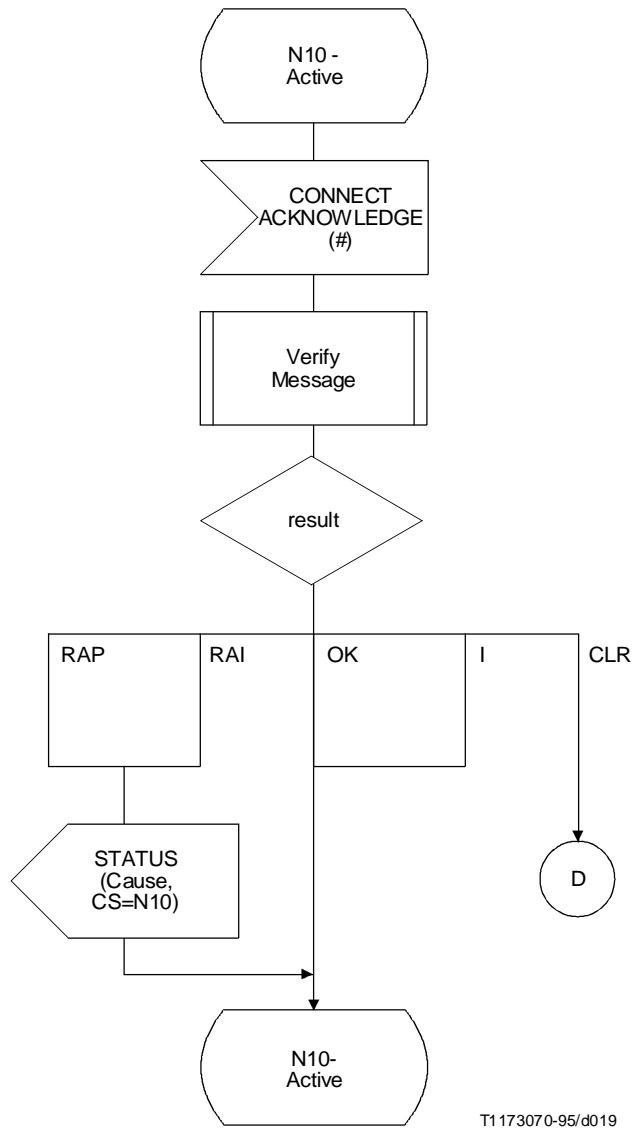


T1173050-95/d017

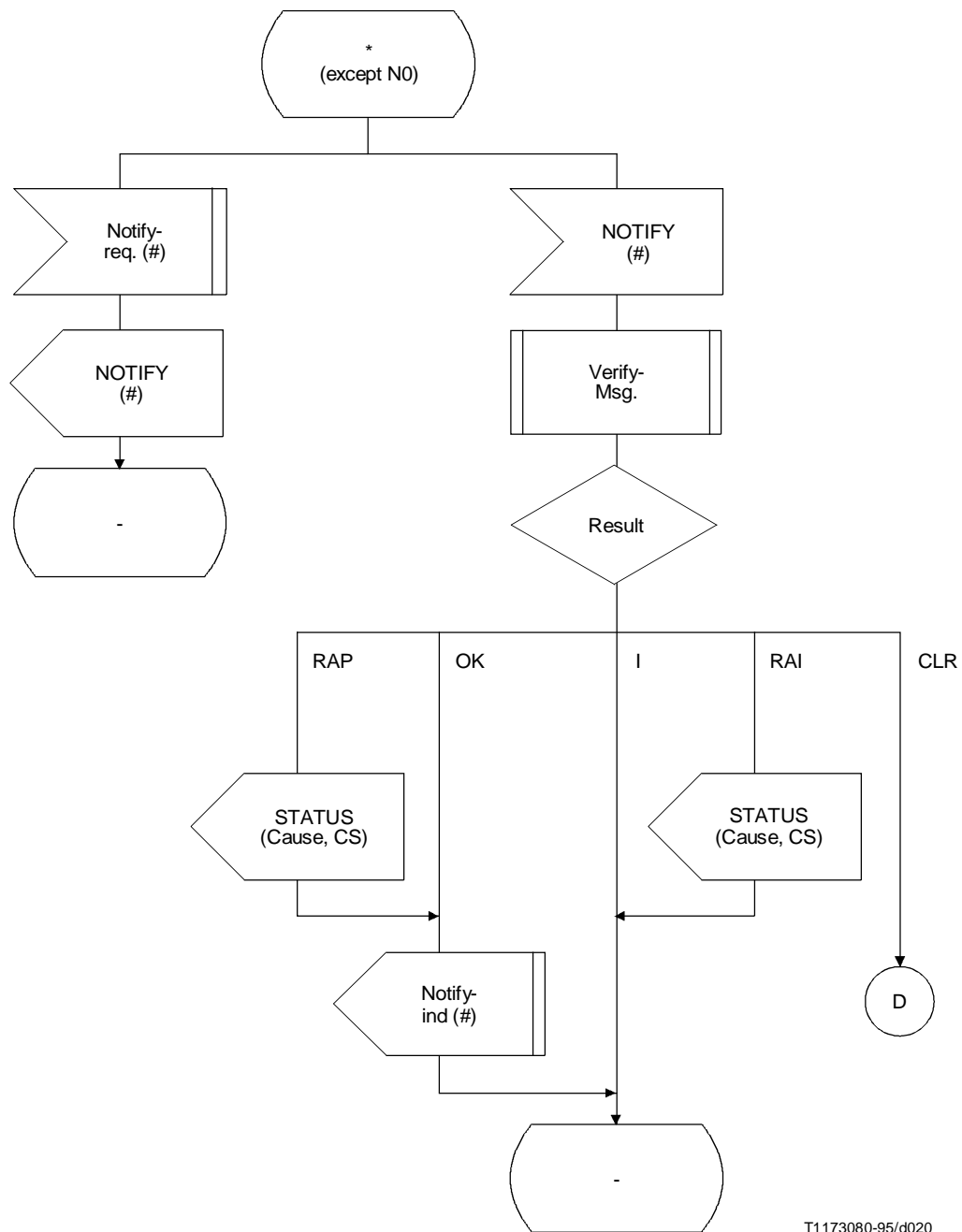
Process Call-Control-N
(Sheet 16 of 39)



Process Call-Control-N
(Sheet 17 of 39)



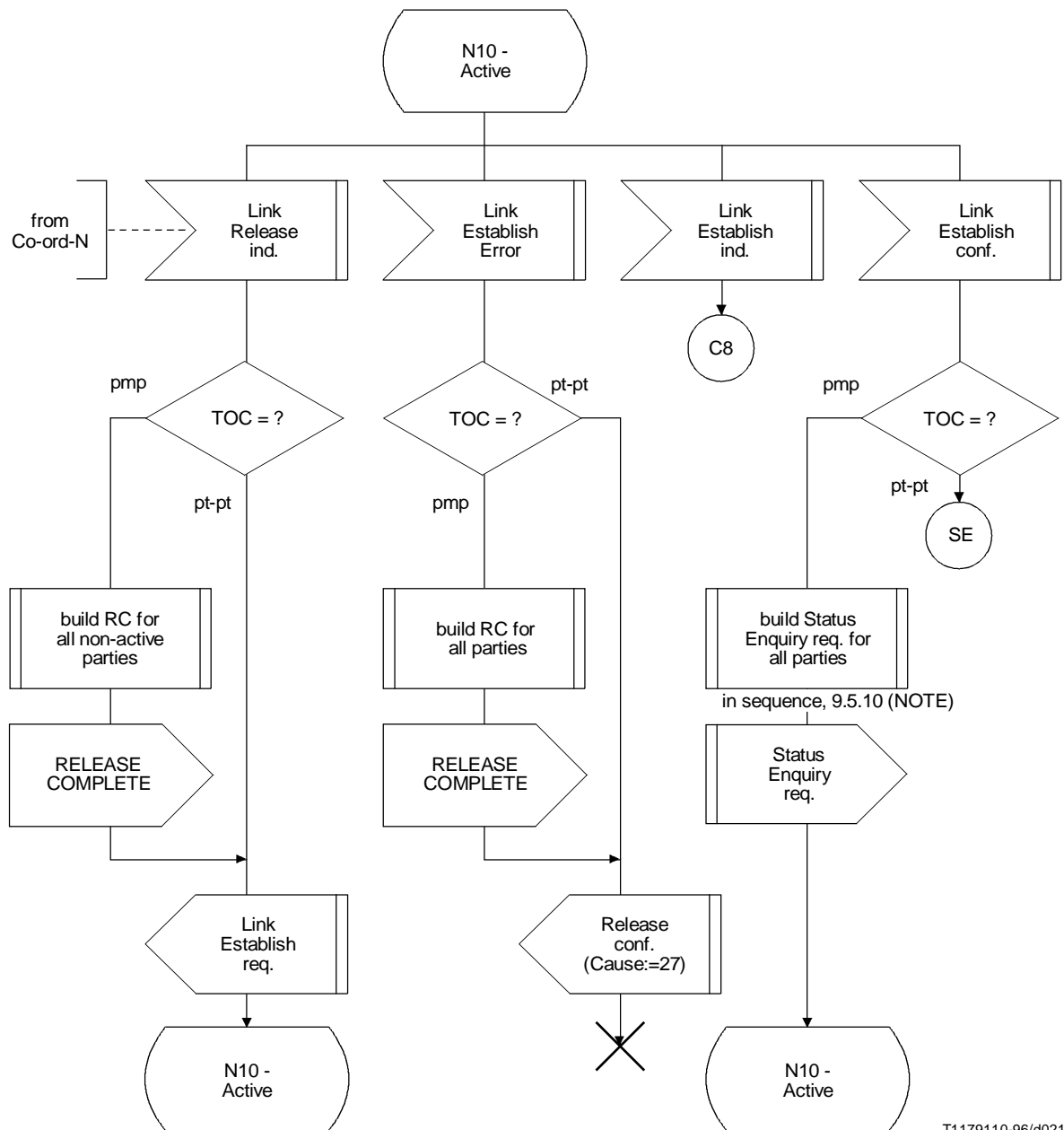
Process Call-Control-N
(Sheet 18 of 39)



T1173080-95/d020

Process Call-Control-N

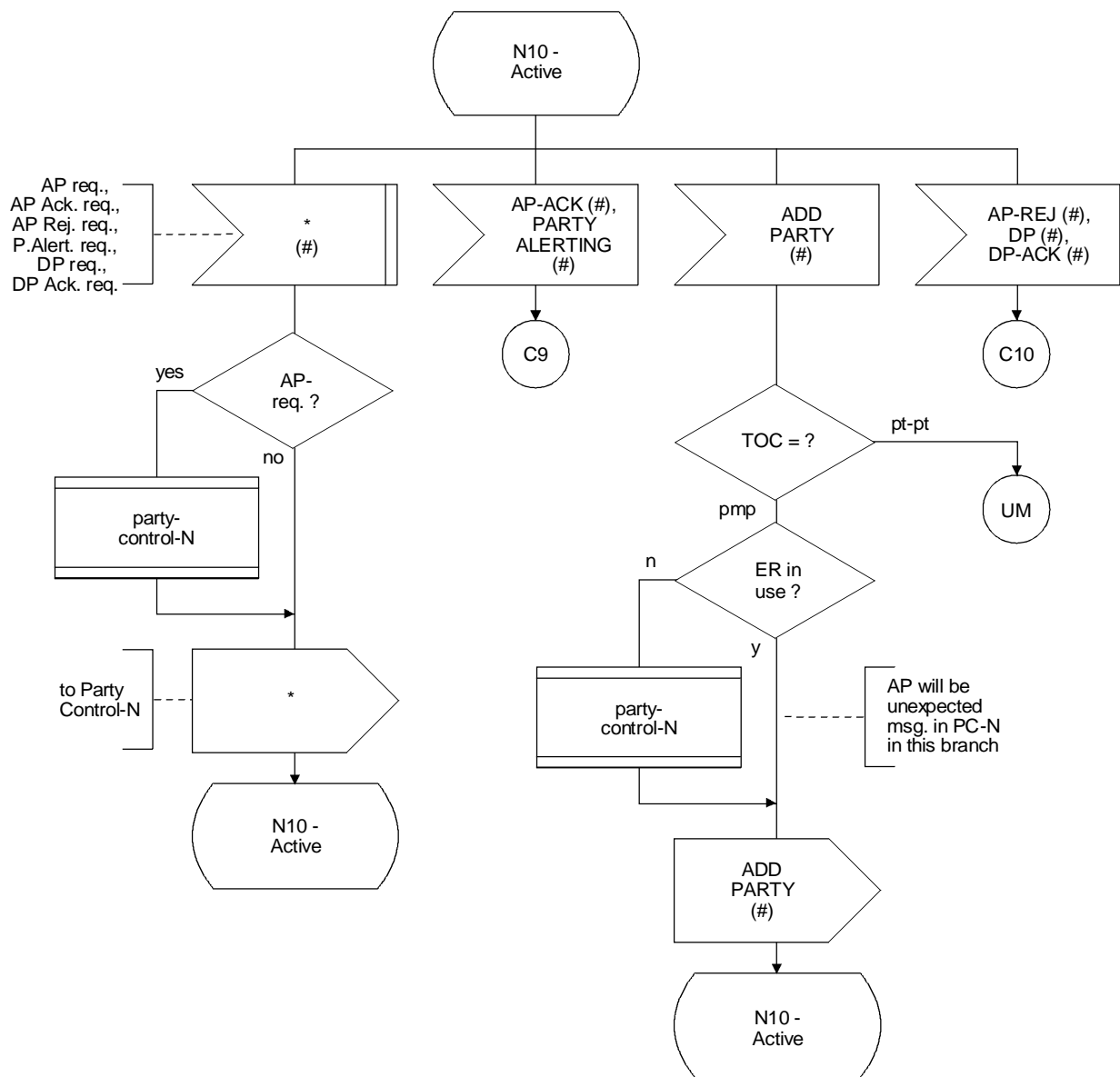
(Sheet 19 of 39)



T1179110-96/d021

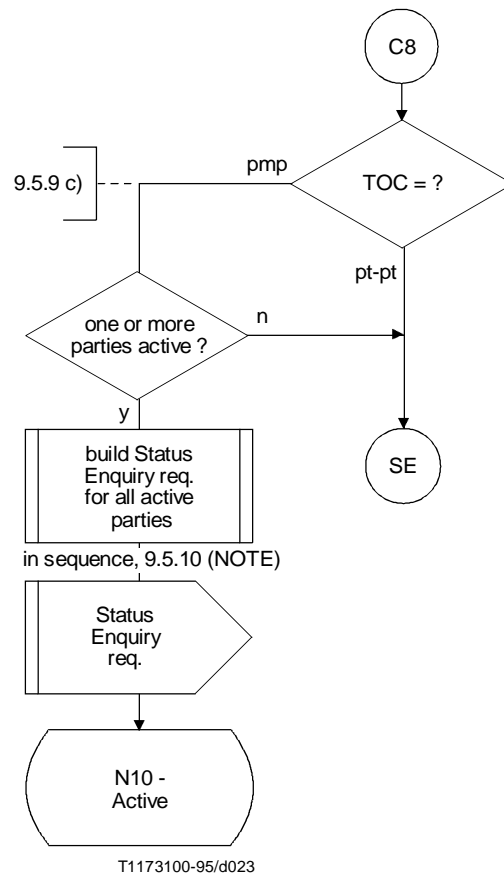
Process Call-Control-N

(Sheet 20 of 39)

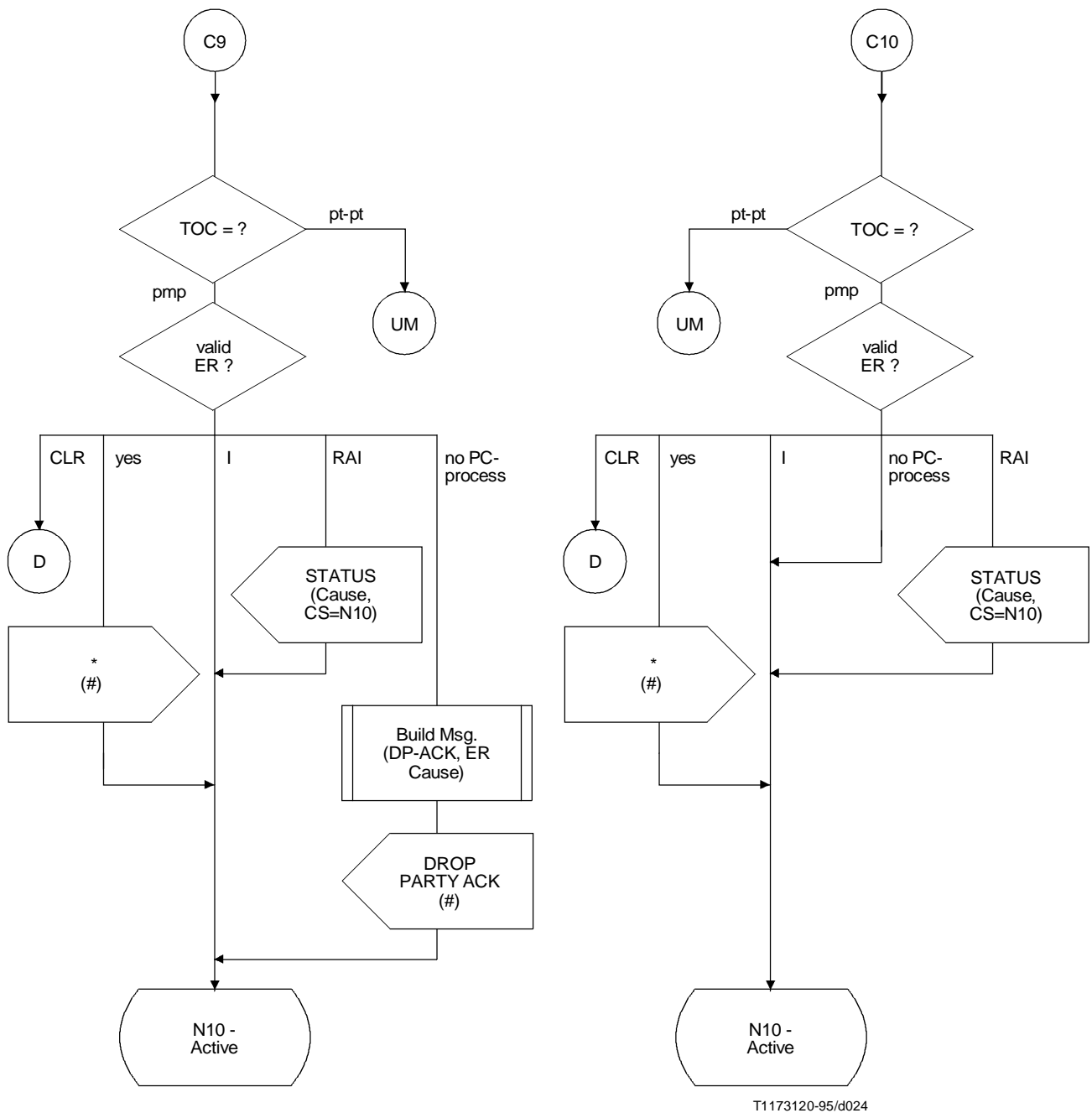


T1173110-95/d022

Process Call-Control-N
(Sheet 21 of 39)



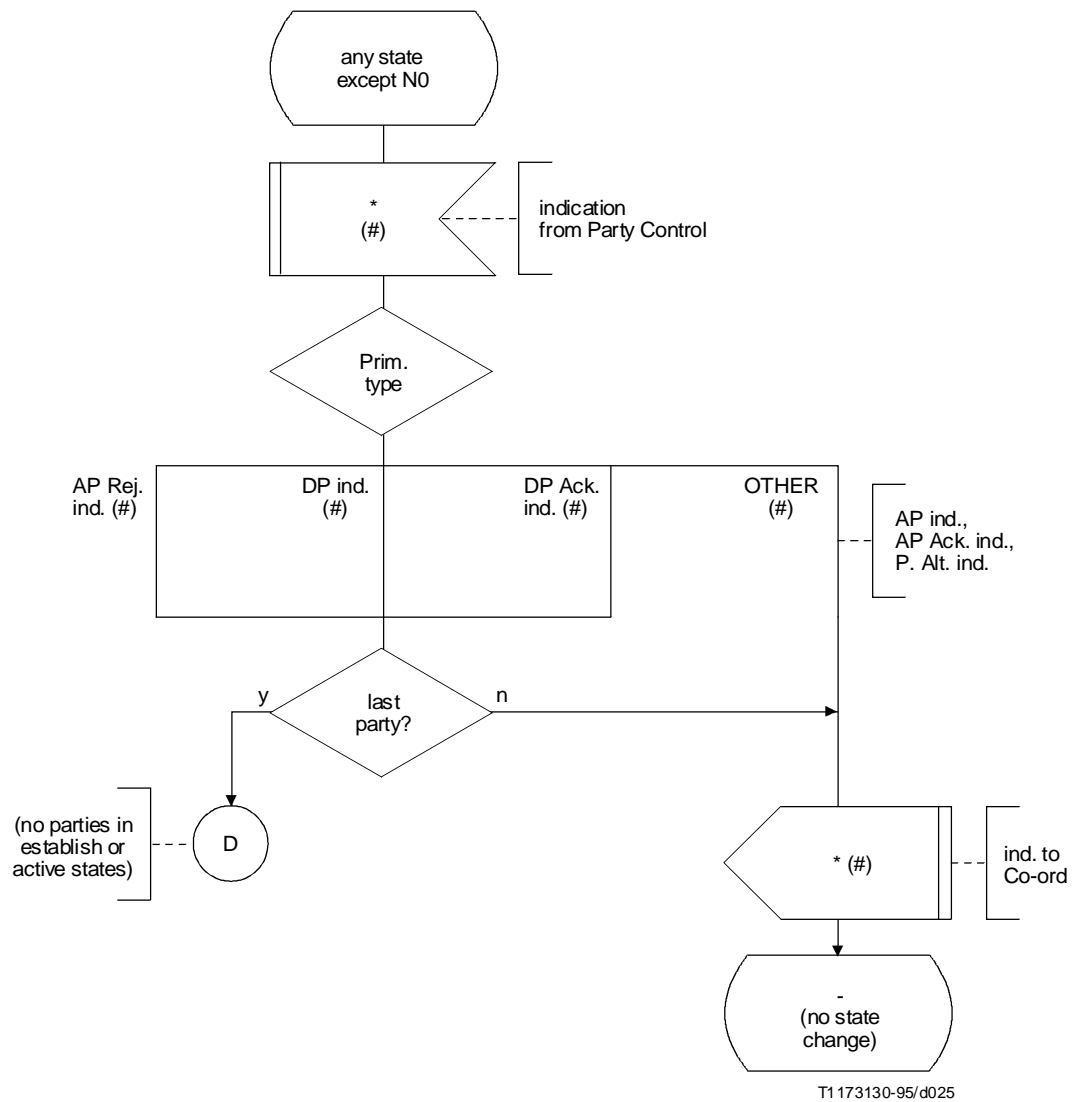
Process Call-Control-N
(Sheet 22 of 39)



T1173120-95/d024

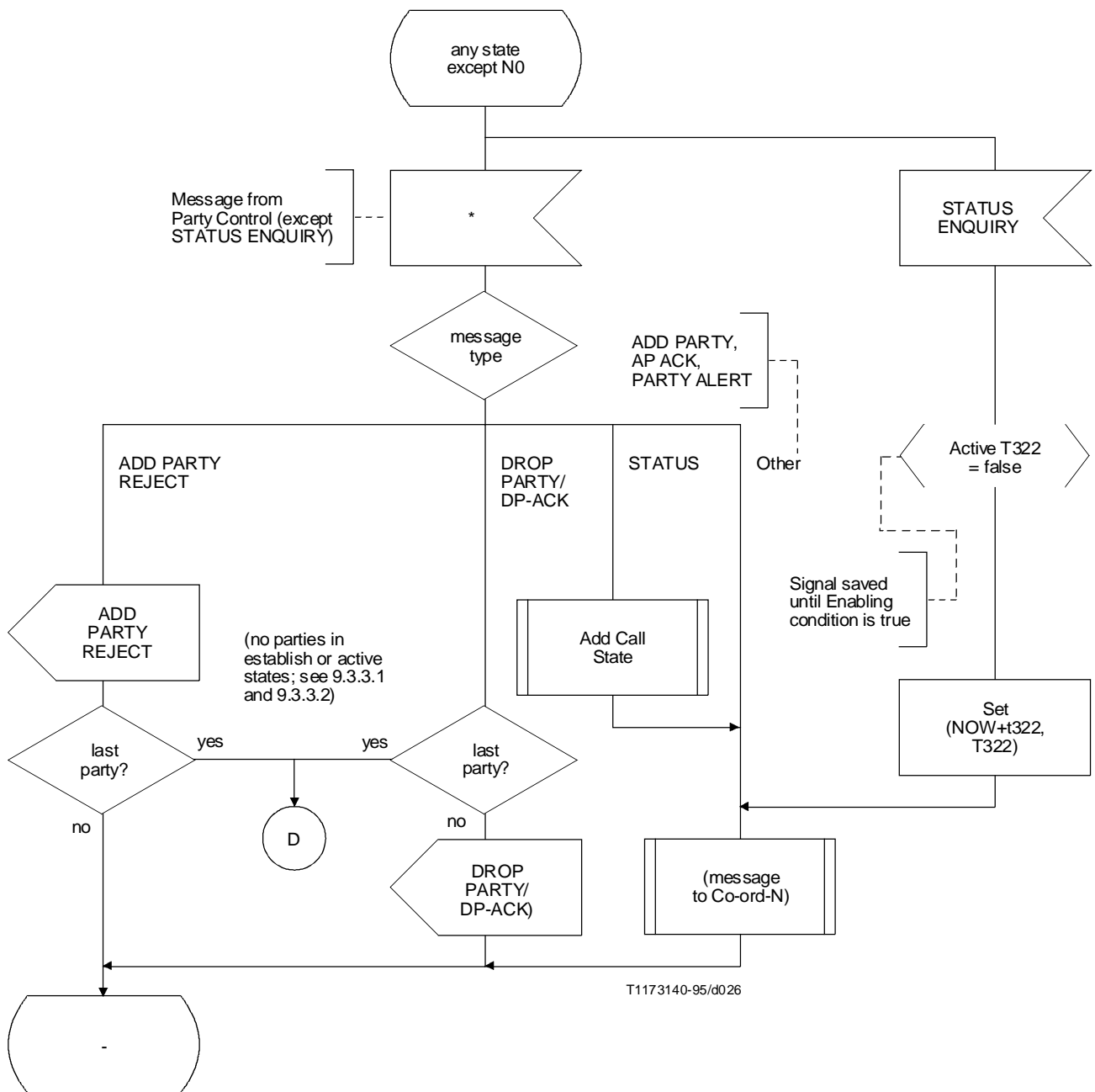
Process Call-Control-N

(Sheet 23 of 39)



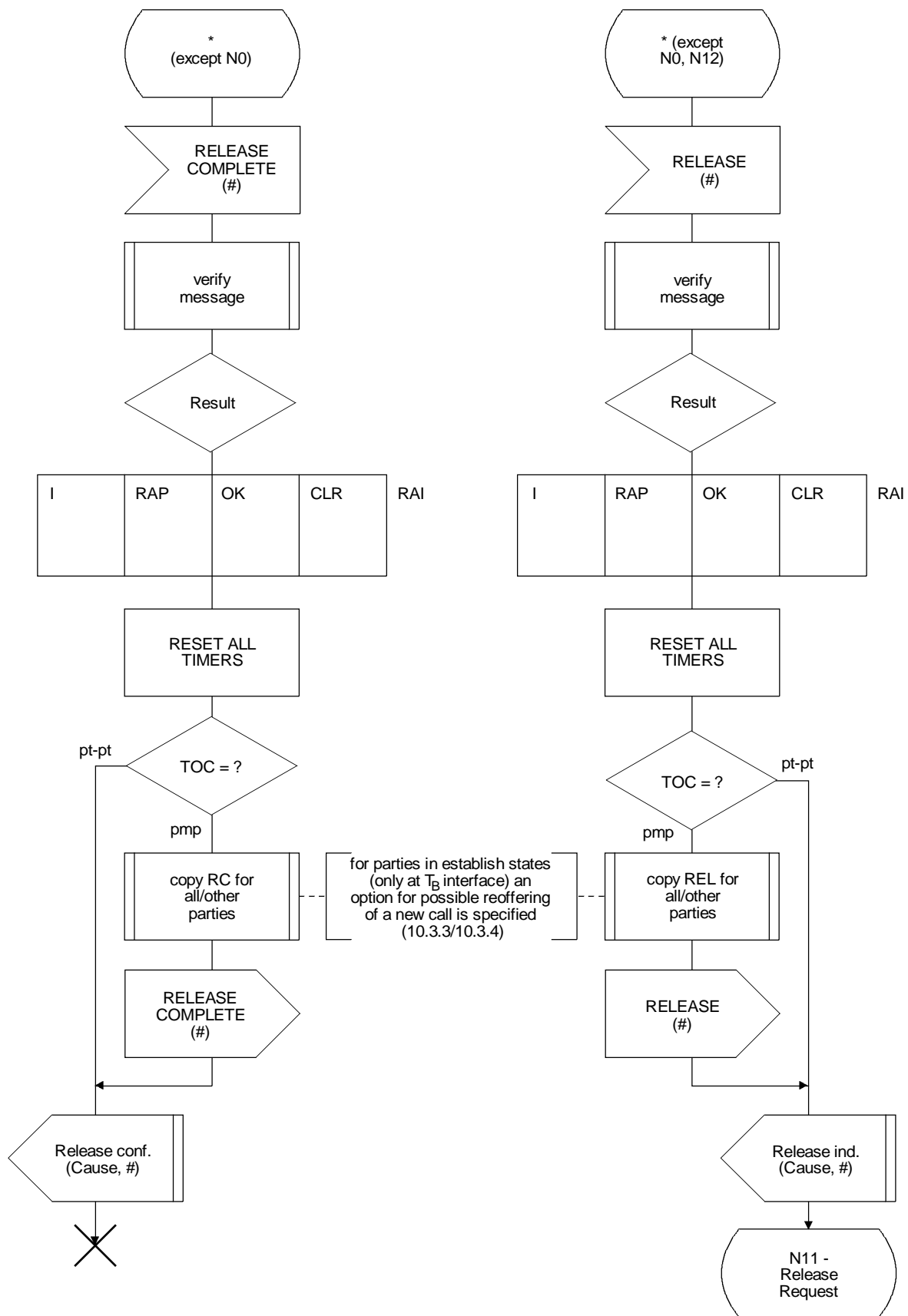
T1173130-95/d025

Process Call-Control-N
(Sheet 24 of 39)



Process Call-Control-N

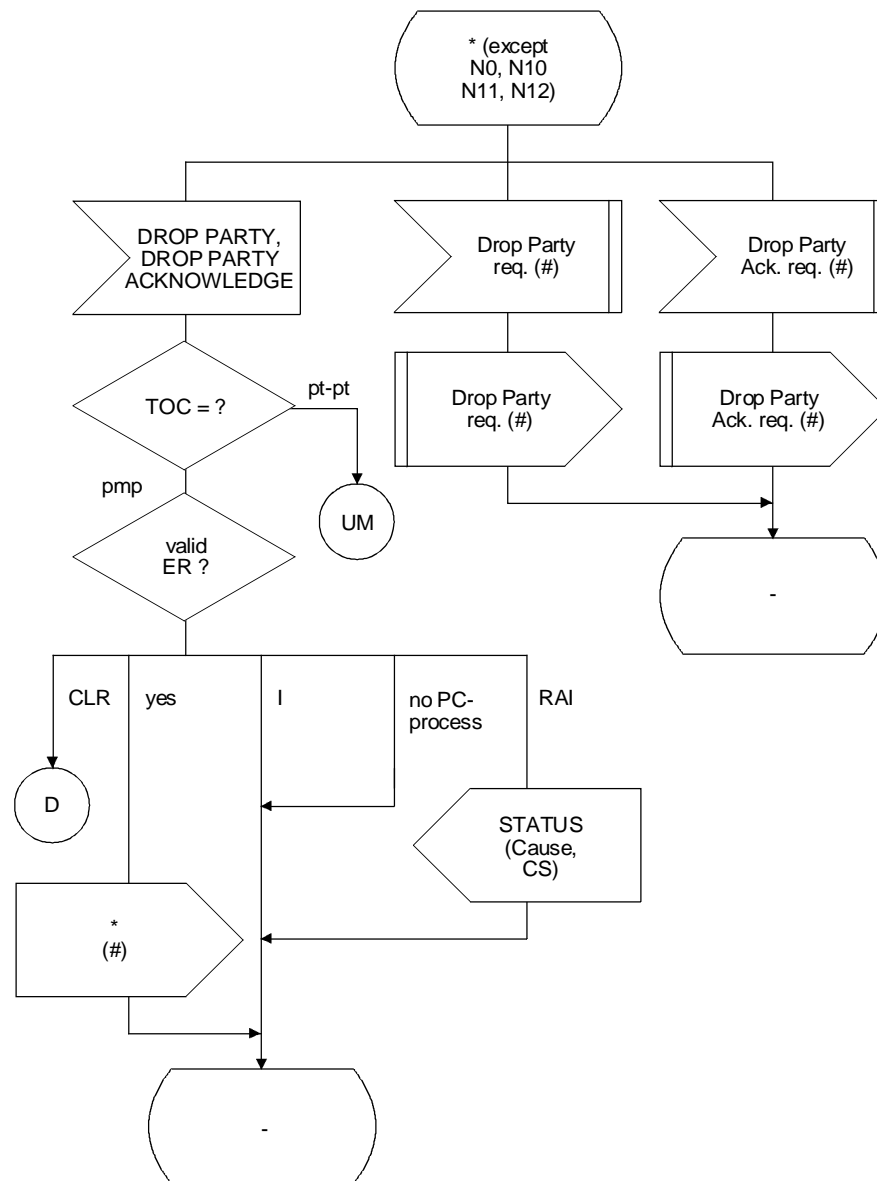
(Sheet 25 of 39)



T1179120-96/d027

Process Call-Control-N

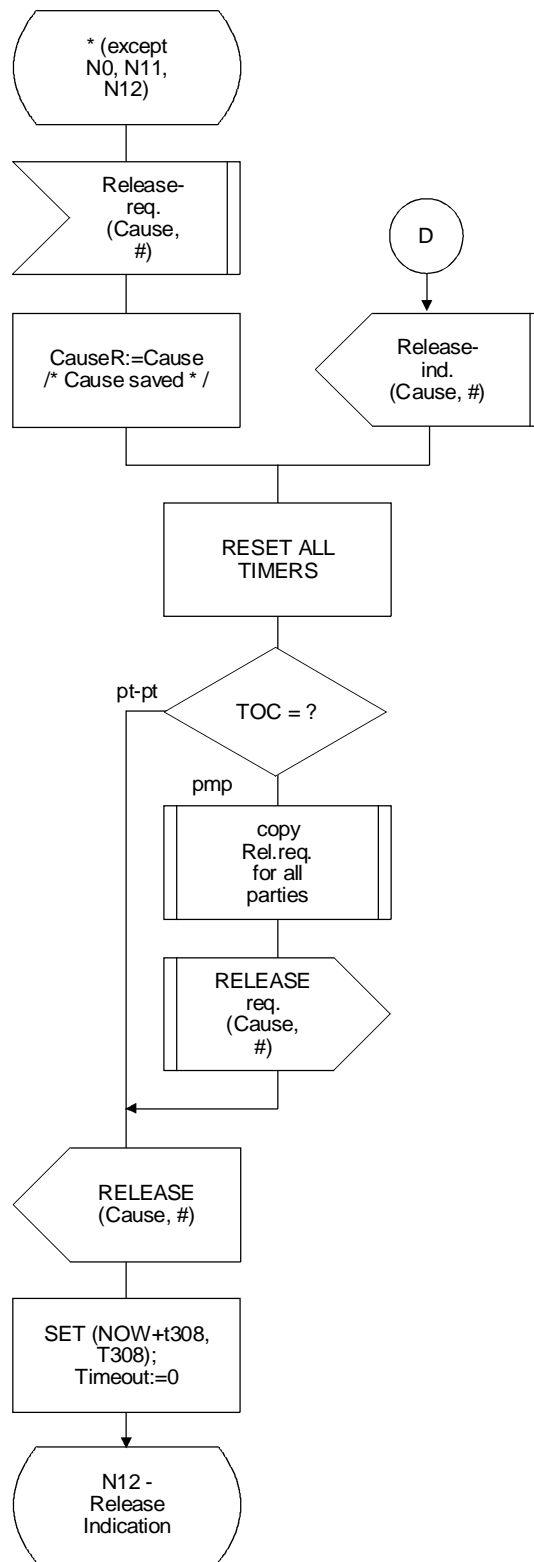
(Sheet 26 of 39)



T1173160-95/d028

Process Call-Control-N

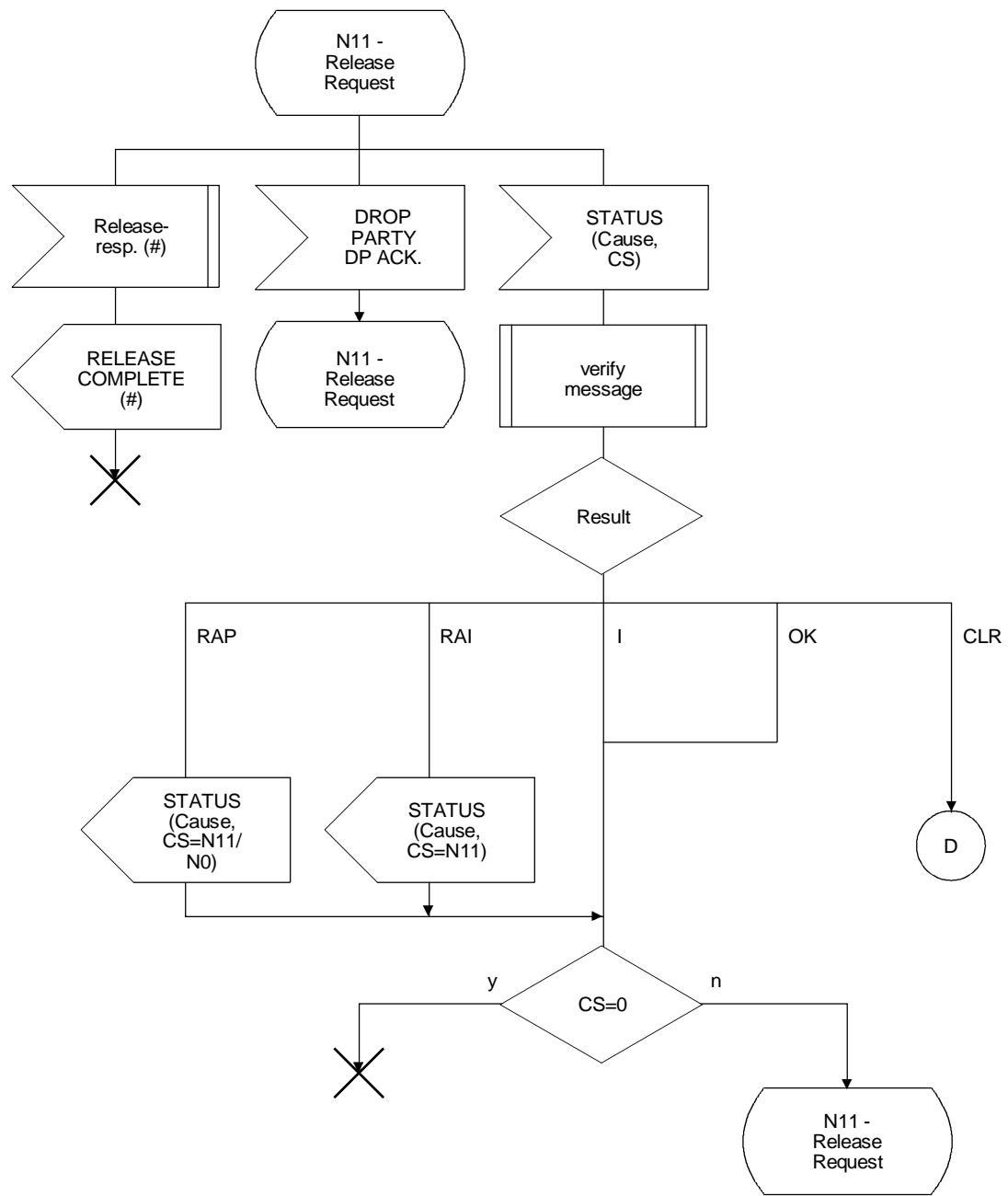
(Sheet 27 of 39)



T1173170-95/d029

Process Call-Control-N

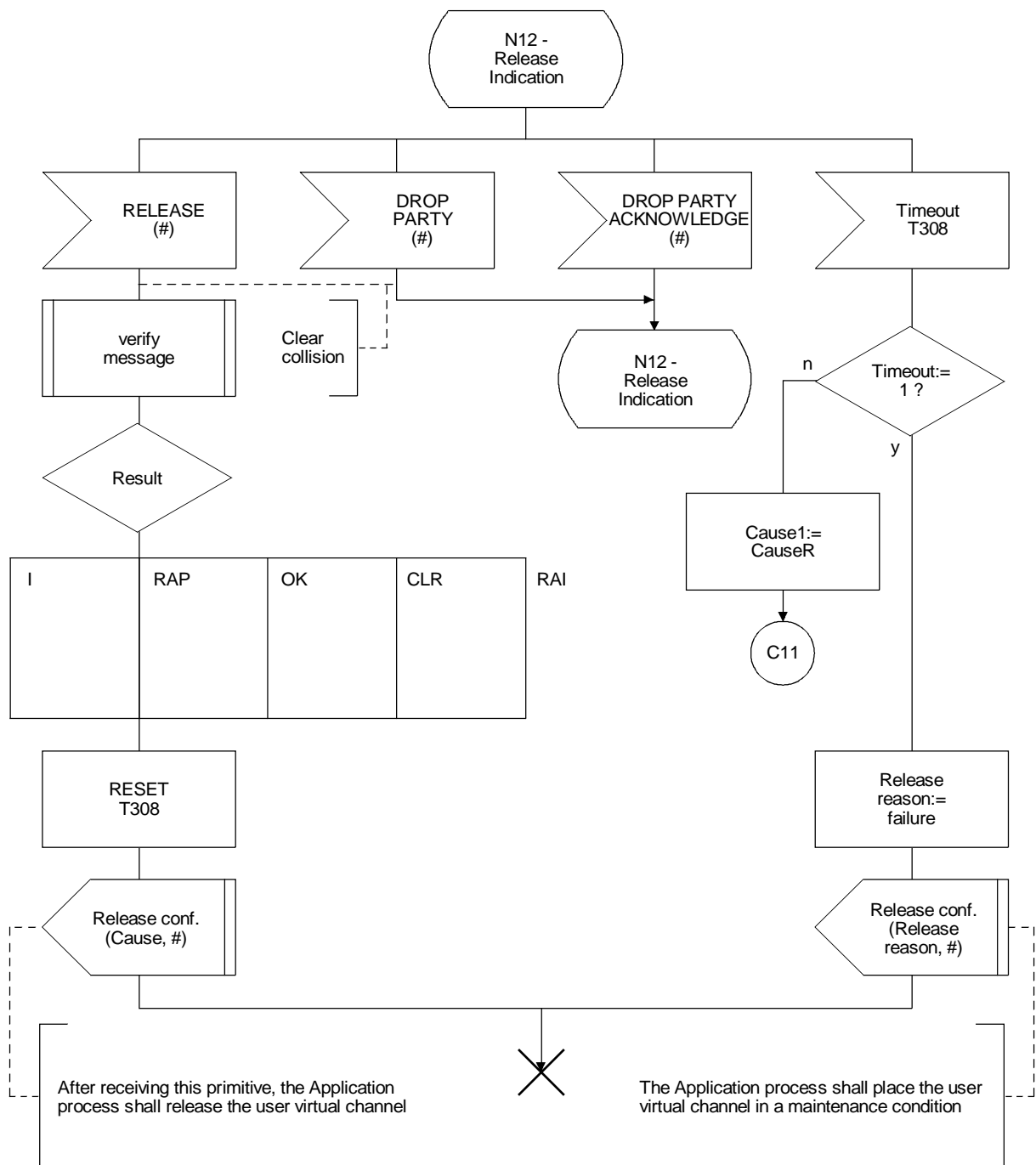
(Sheet 28 of 39)



T1179130-96/d030

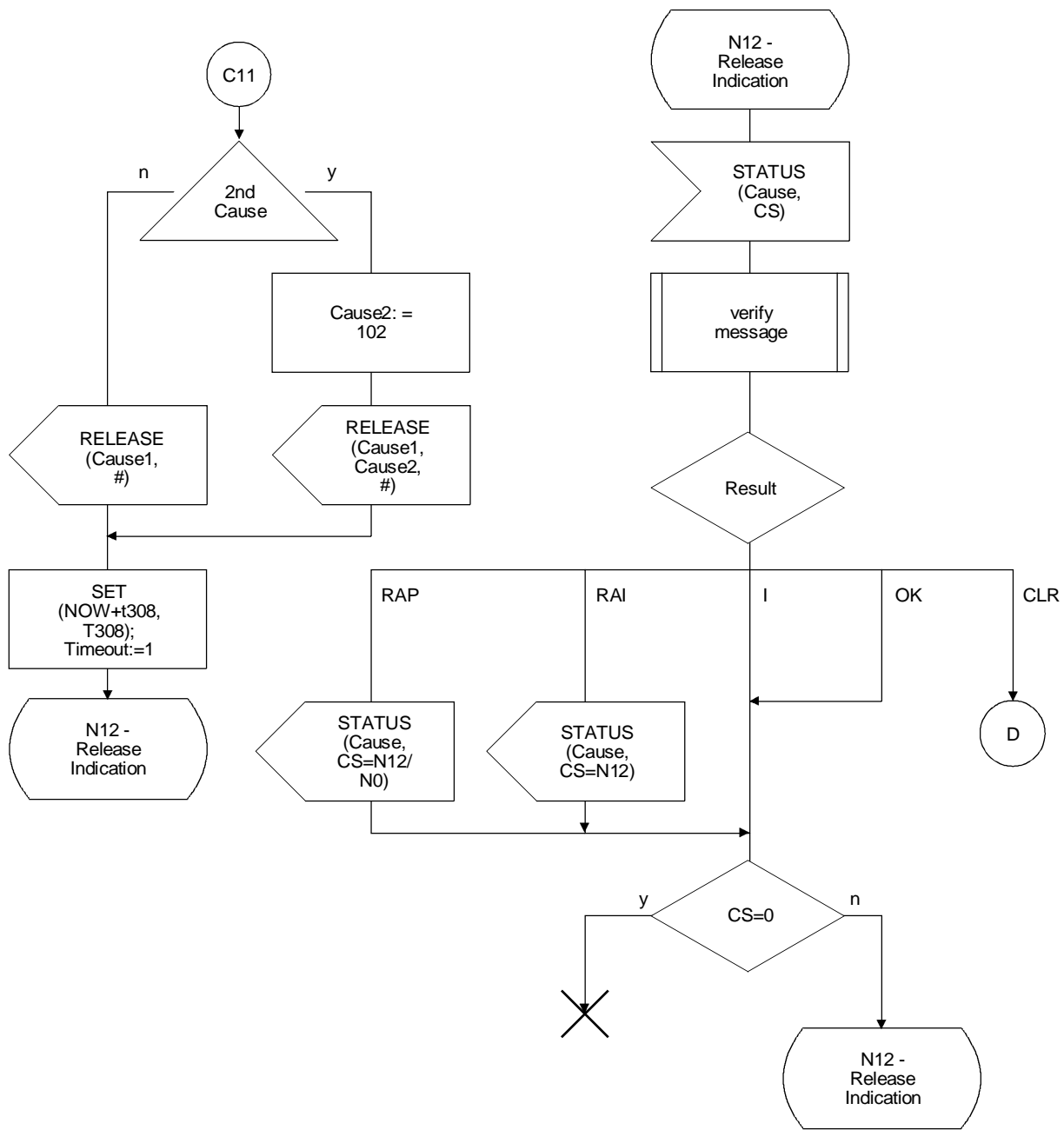
Process Call-Control-N

(Sheet 29 of 39)



T1179140-96/d031

Process Call-Control-N
(Sheet 30 of 39)



T1 179150-96/d032

Process Call-Control-N

(Sheet 31 of 39)