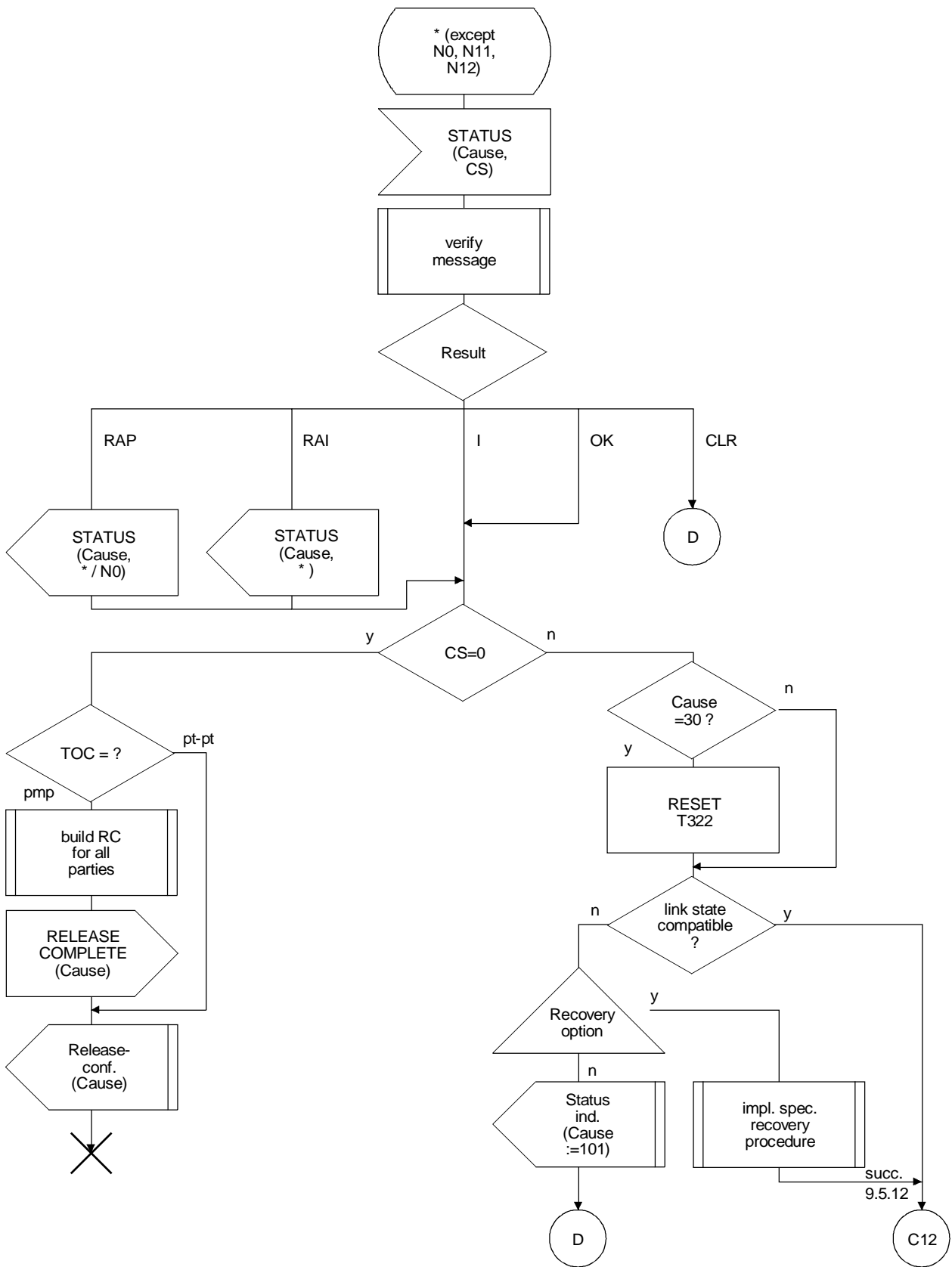


Process Call-Control-N

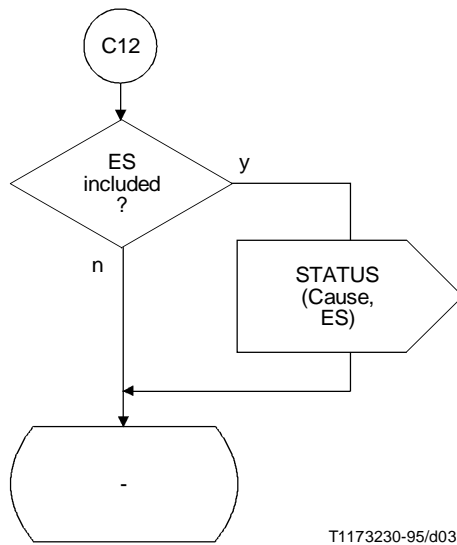
(Sheet 32 of 39)



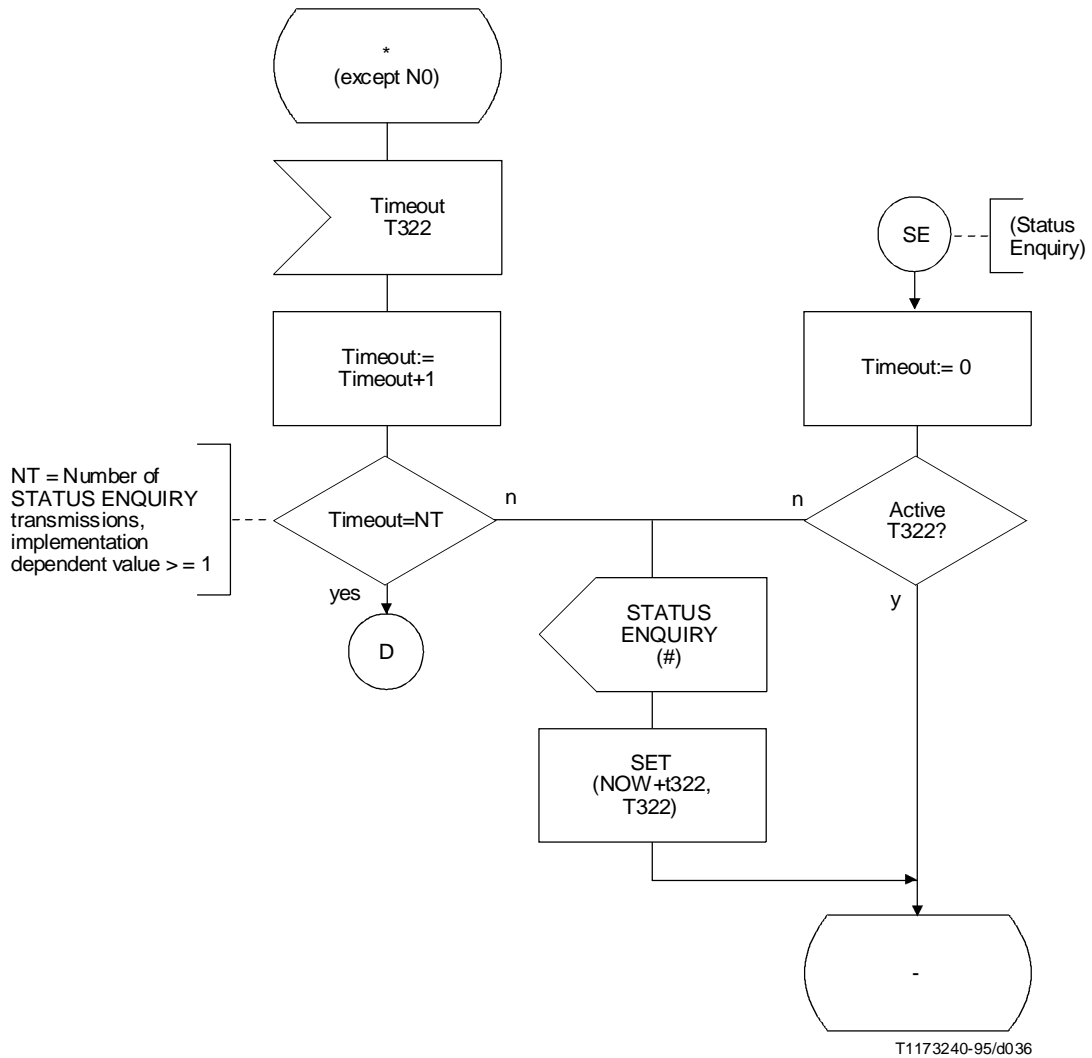
T1179170-96/d034

Process Call-Control-N

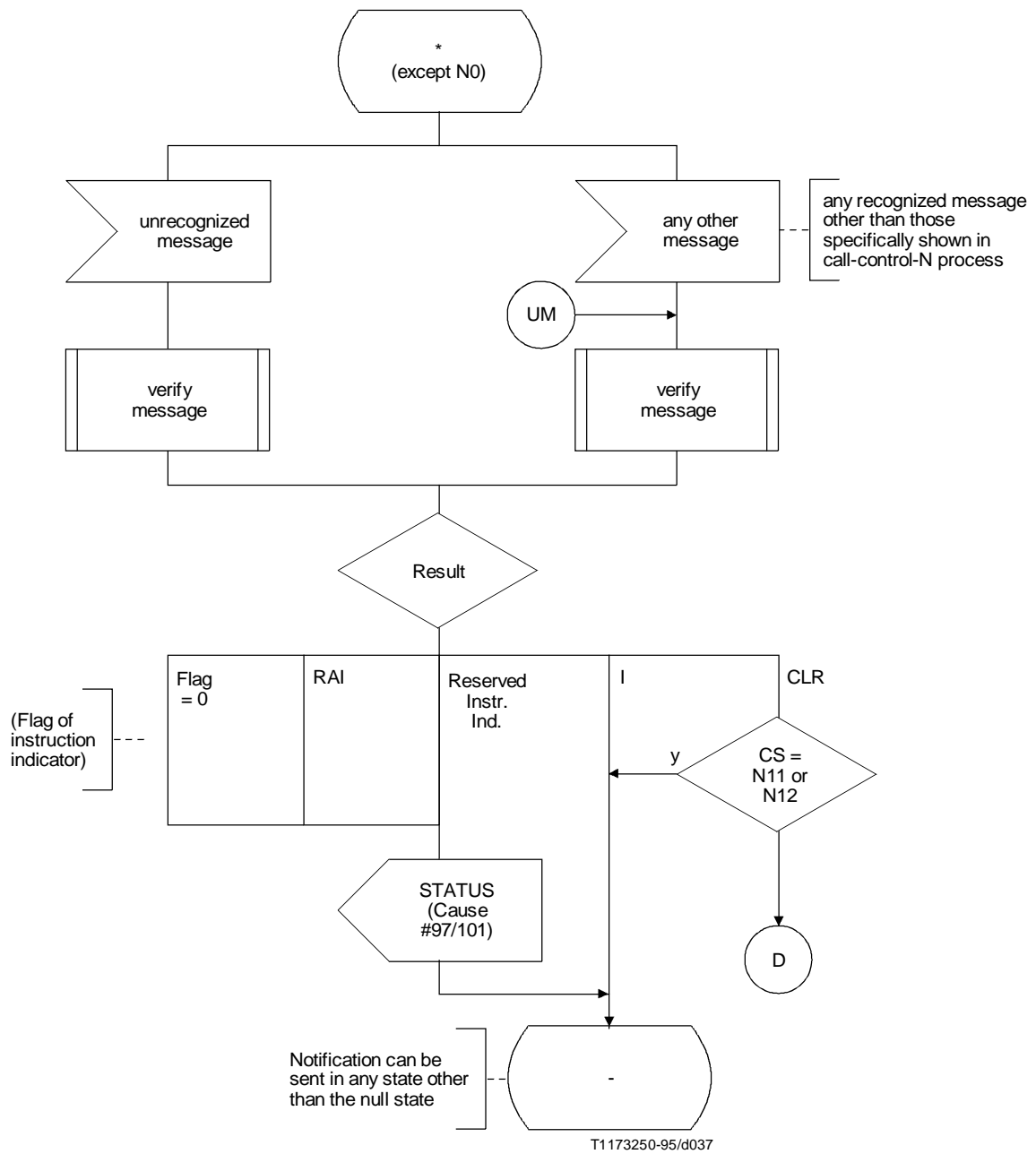
(Sheet 33 of 39)



Process Call-Control-N
(Sheet 34 of 39)

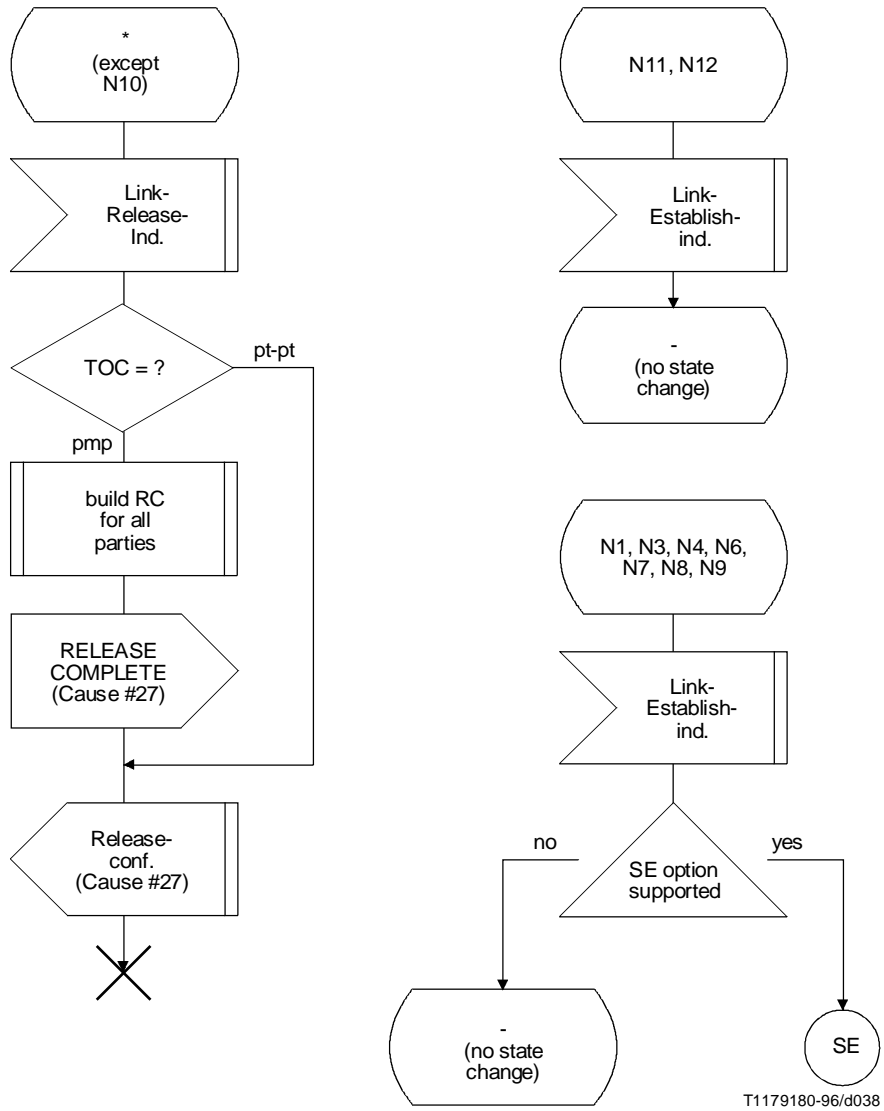


Process Call-Control-N
(Sheet 35 of 39)



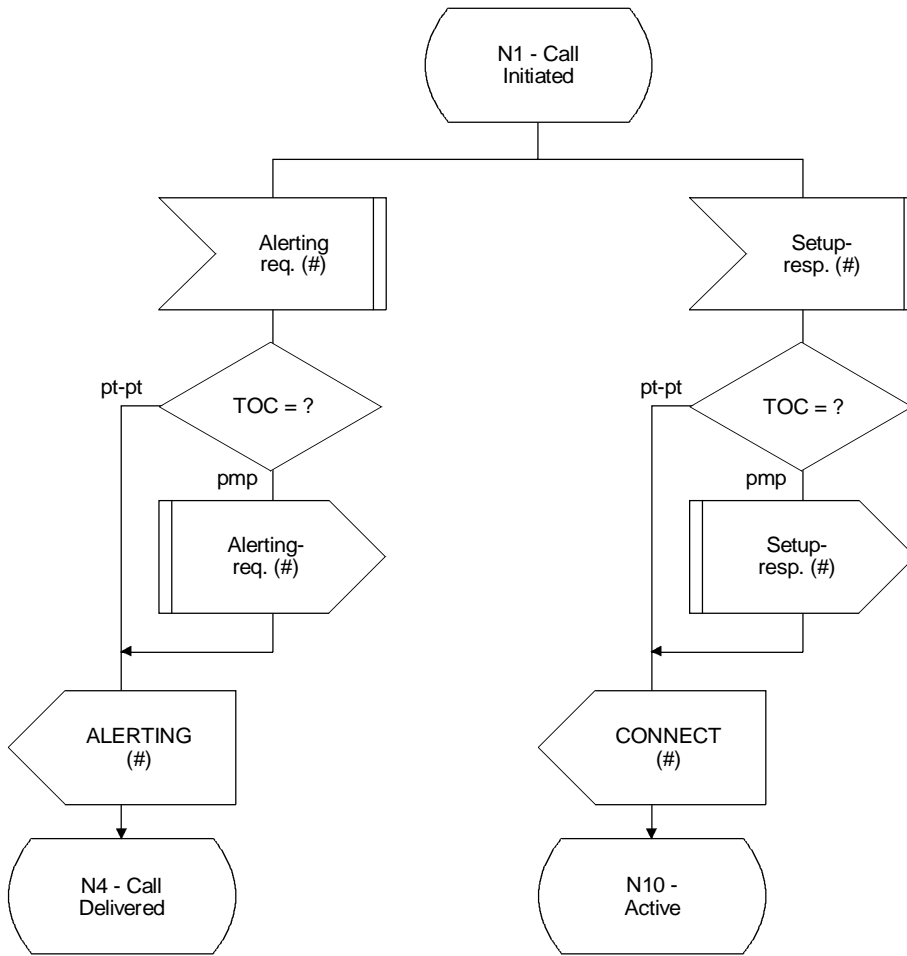
Process Call-Control-N

(Sheet 36 of 39)



Process Call-Control-N

(Sheet 37 of 39)



T1173270-95/d039

Process Call-Control-N

(Sheet 38 of 39)

(see Annex A/Q.2931, process Q.2931-N, pages 20-31 of (31))

T1173280-95/d040

Process Call-Control-N

(Sheet 39 of 39)

F.1.5 PROCESS Reset-Start-N

For the process Reset-Start-N, the SDL description of Annex A/Q.2931 remains valid without the need for technical changes.

F.1.6 PROCESS Reset-Response-N

For the process Reset-Response-N, the SDL description of Annex A/Q.2931 remains valid without the need for technical changes.

F.1.7 Process Party-Control-N: Overview State-Event-Diagram (does not include Timer Expires)

[Numbers show sheet no. (sheet 1 of 13); empty fields show events not described/applicable.]

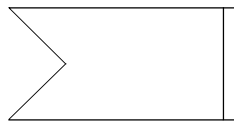
State	PN0	PN1	PN2	PN3	PN4	PN5	PN6	PN7
Event (5.7)								
(from CC-N:)								
Setup-req.	3							
Alerting-req.			6					
Setup-resp.			6	7				
Setup-compl.-req.		4			7			
Release-req.		11	11	11	11	10	11	11
Release-resp.		11	11	11	11	11	11	11
SETUP	3	11	11	11	11	11	11	11
ALERTING		5	11	11	11	11	11	11
RELEASE		11	11	11	11	10	11	11
RELEASE COMP.		11	11	11	11	11	11	11
STATUS	13	12	12	12	12	10	12	12
STATUS ENQUIRY	13	12	12	12	12	12	12	12
Add Party req.	3							
Add Party Ack. req.			6	7				
Add Party Rej. req.			6					
Party Alerting req.			6					
Drop Party req.		8		8	8			8
DP Ack. req.							9	
Party St. Enq. req.		12	12	12	12	12	12	12
ADD PARTY	3	11	6	11	11	11	11	11
ADD PARTY ACK.		4	11	11	7	11	11	11
ADD PARTY REJ.		4	11	11	11	10	11	11
PARTY ALERTING		5	11	11	11	11	11	11
DROP PARTY		9	9	9	9	10	9	9
DP ACK.		8	8	8	8	8	8	8

Process Call-Control-N

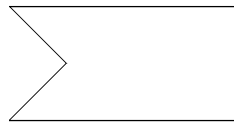
(Sheet 1 of 13)

Process Call-Control-N – Legend

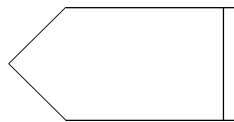
See Recommendation Q.2931, SDL Key; in addition:



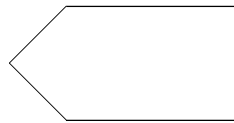
signals from Call-Control-N related to primitives



signals from Call-Control-N related to messages



signals to Call-Control-N related to primitives



signals to Call-Control-N related to messages

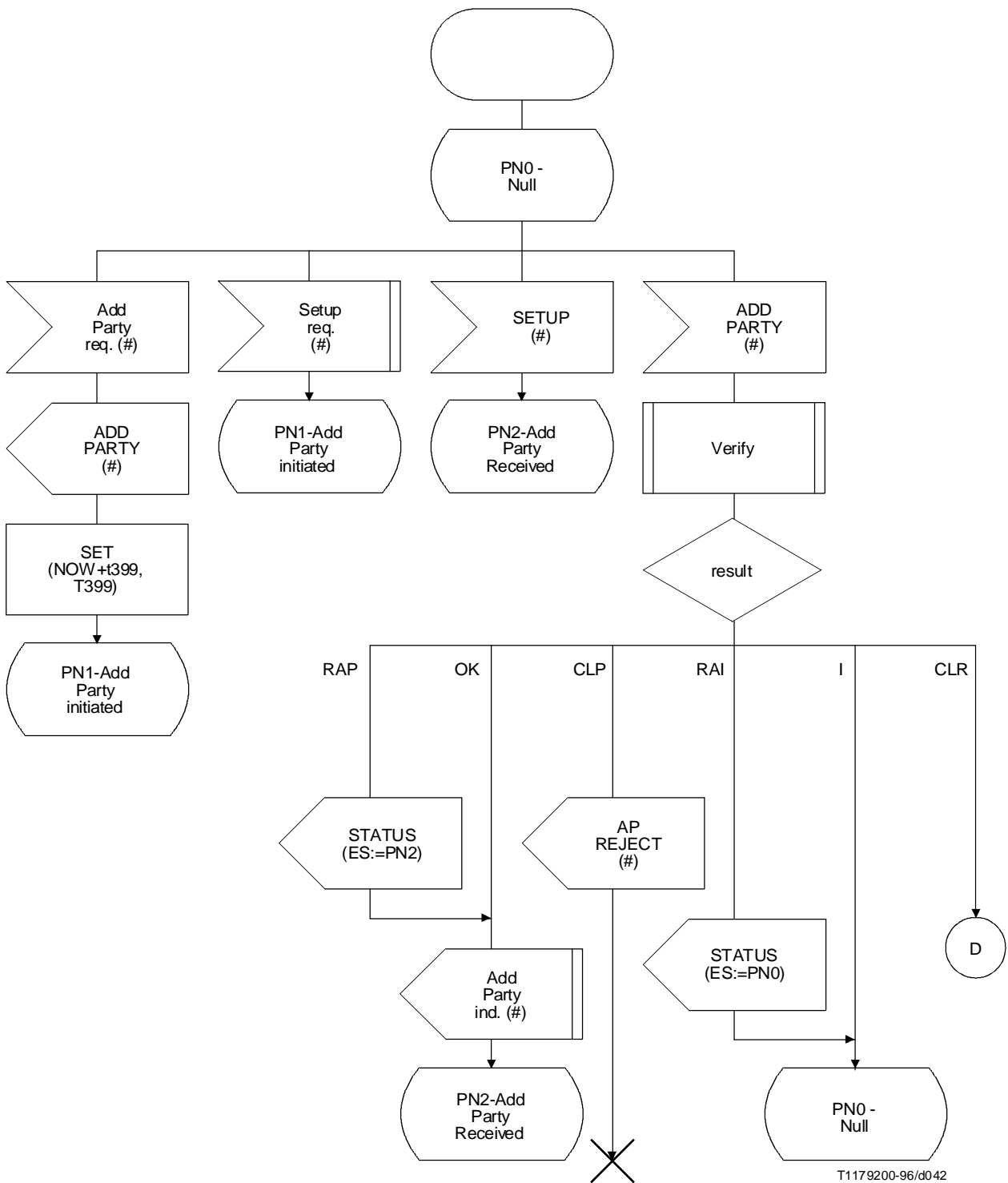


This symbol is used to indicate the end of a process.

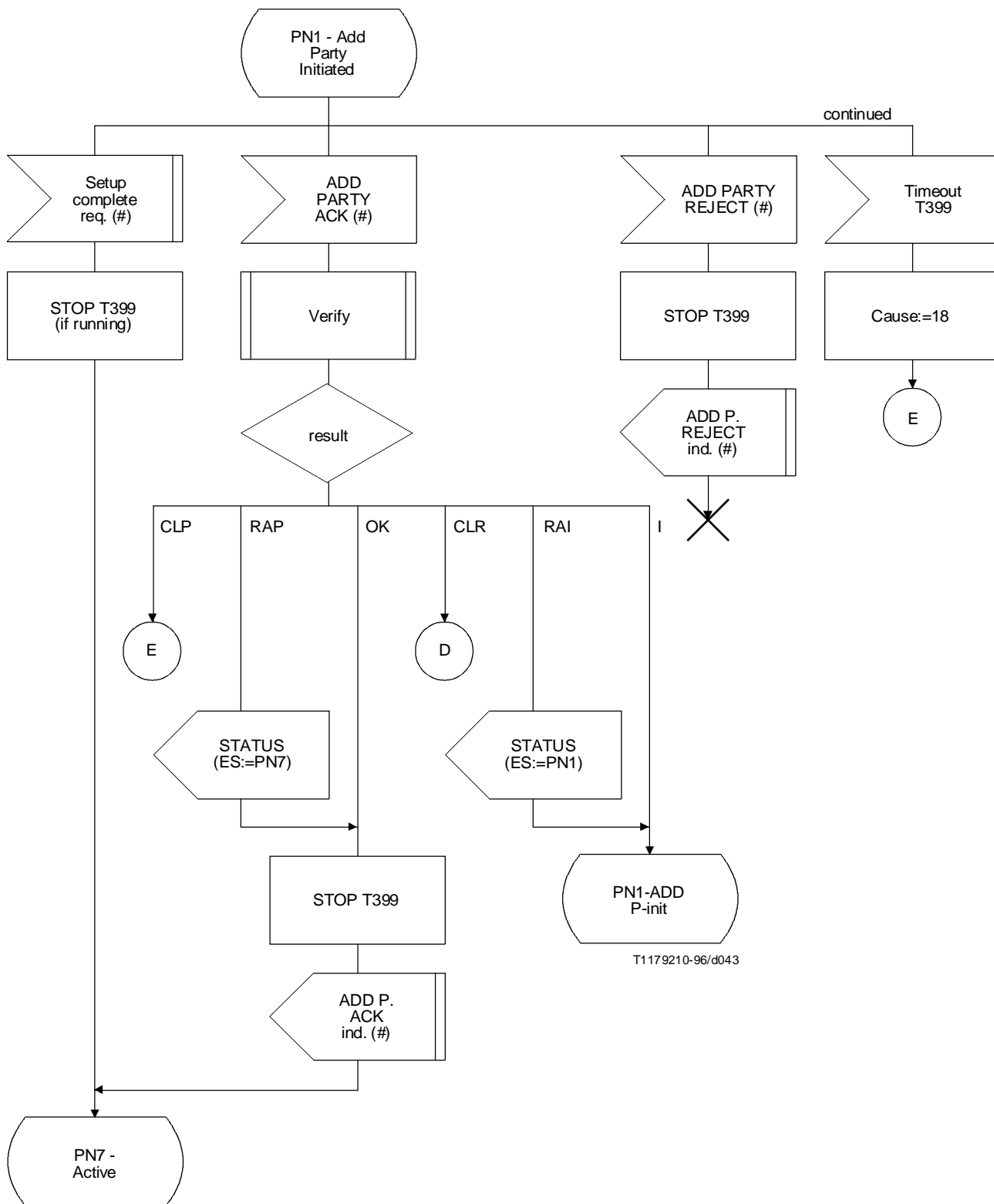
T1179190-96/d041

Process Party-Control-N

(Sheet 2 of 13)



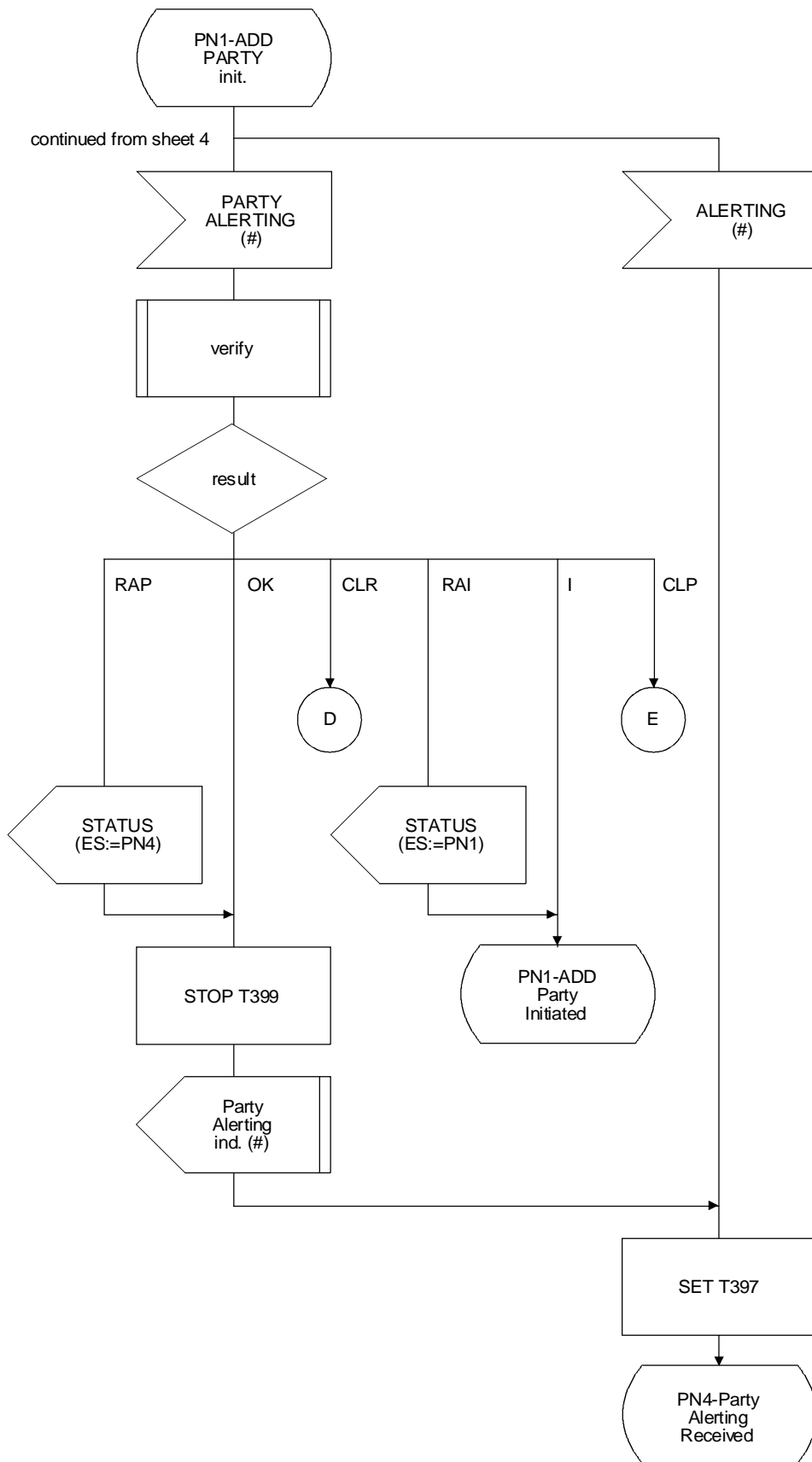
Process Party-Control-N
(Sheet 3 of 13)



T1179210-96/d043

Process Party-Control-N

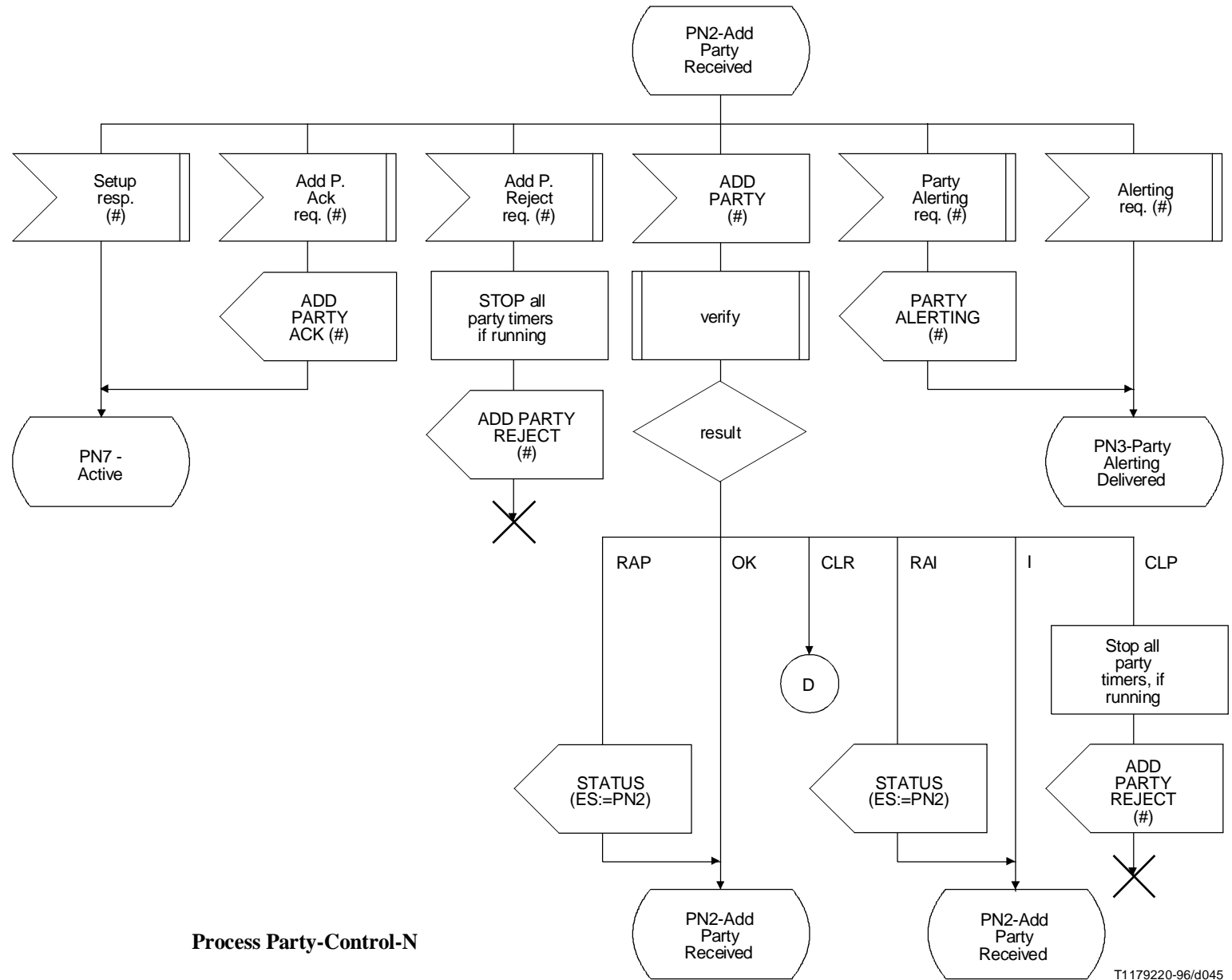
(Sheet 4 of 13)

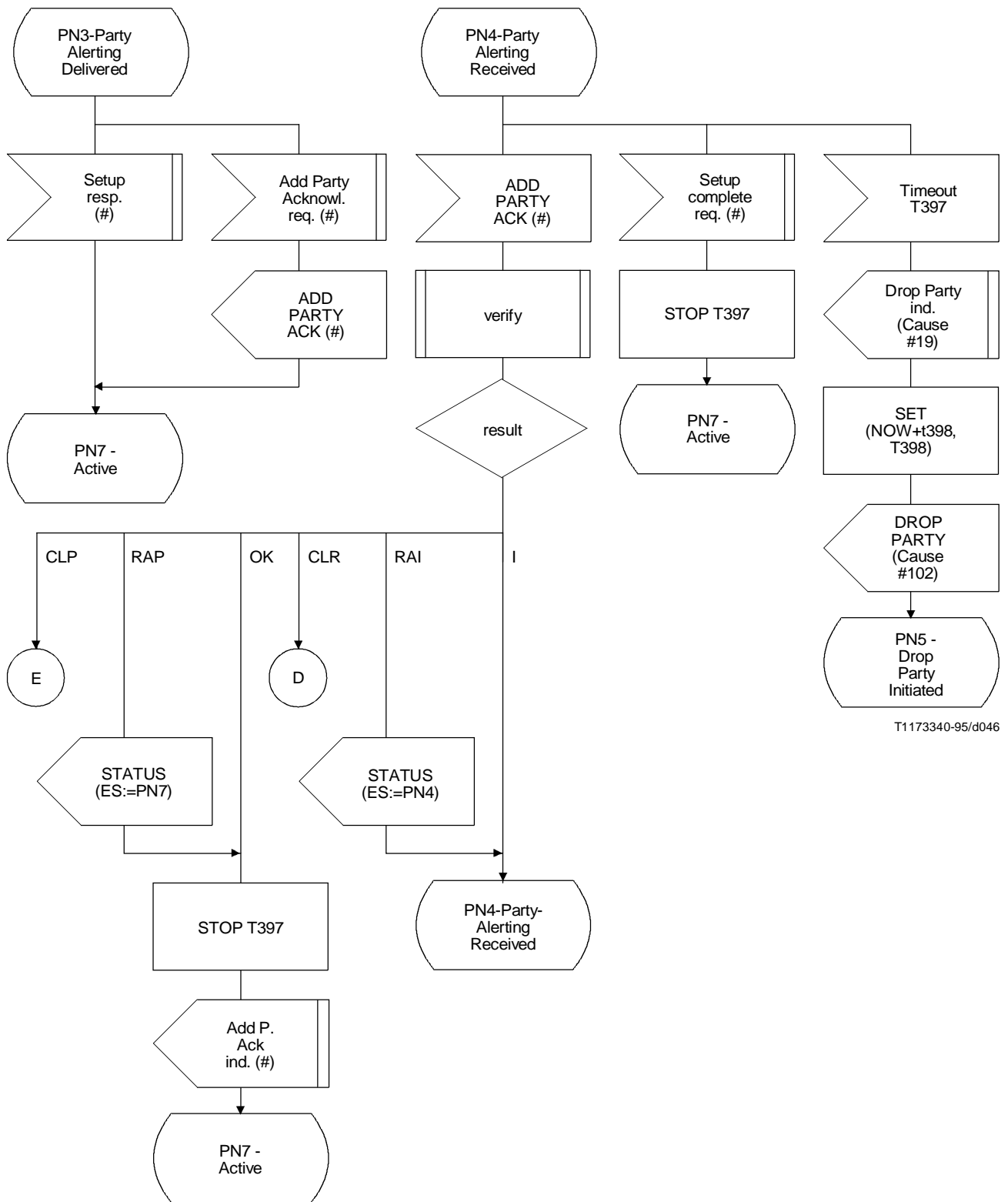


T1173320-95/d044

Process Party-Control-N

(Sheet 5 of 13)

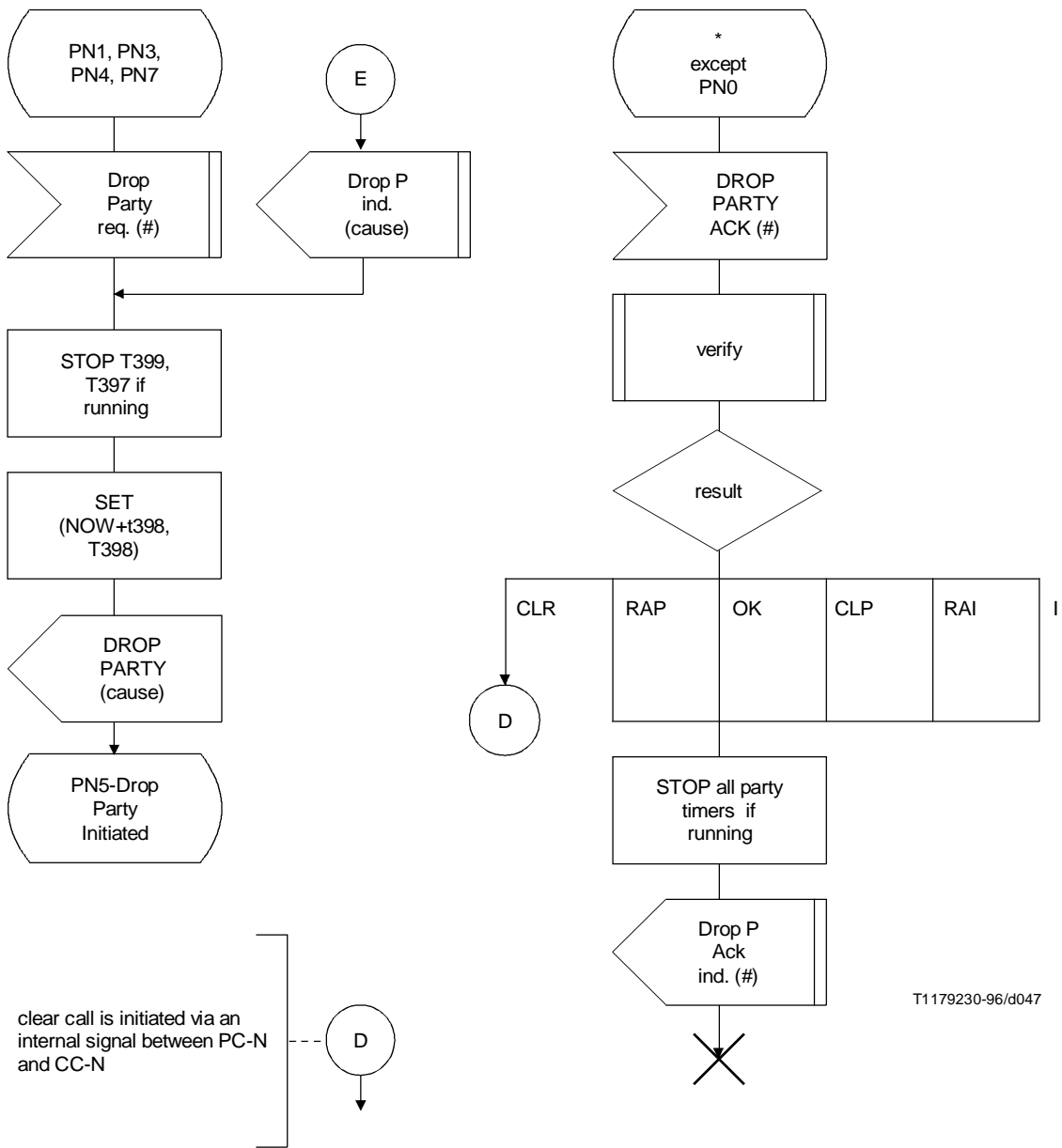




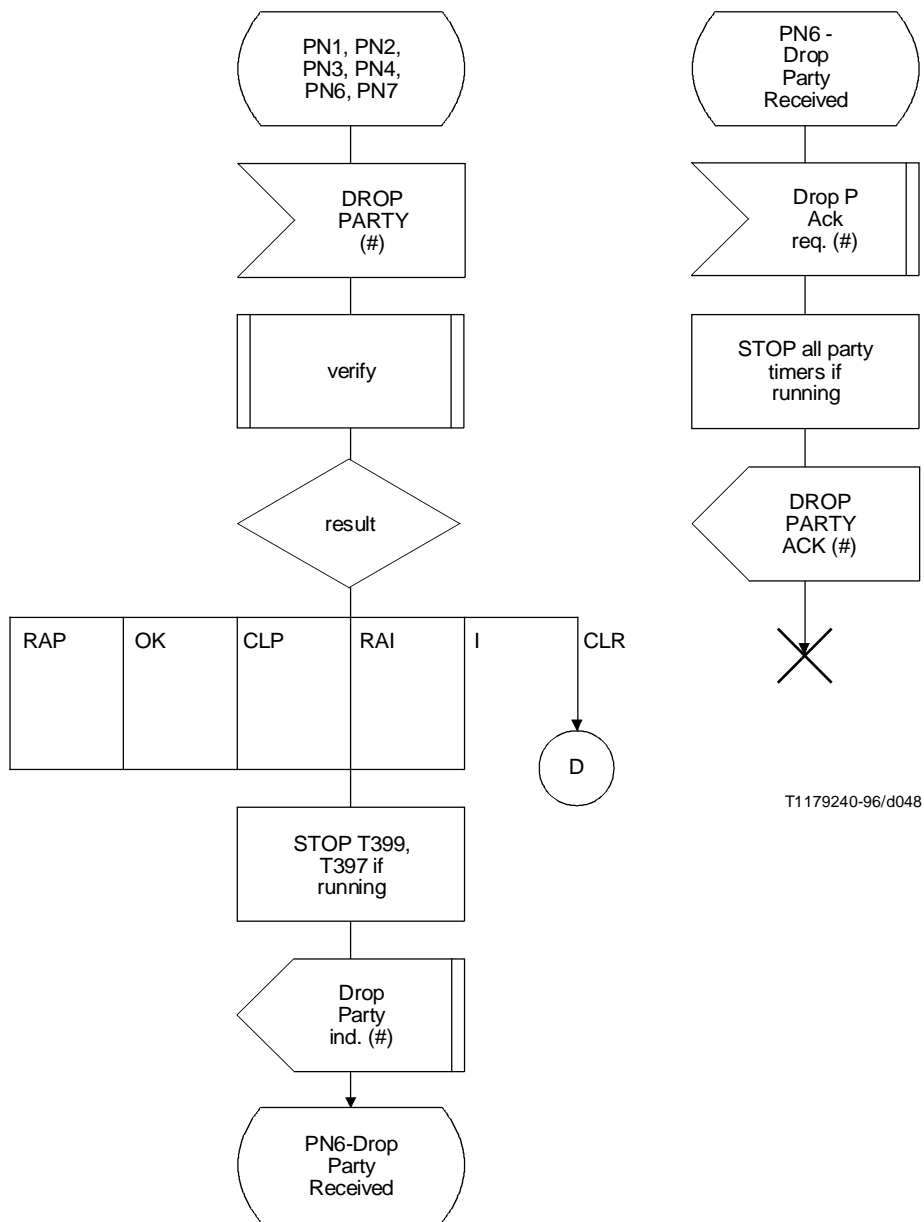
T1173340-95/d046

Process Party-Control-N

(Sheet 7 of 13)

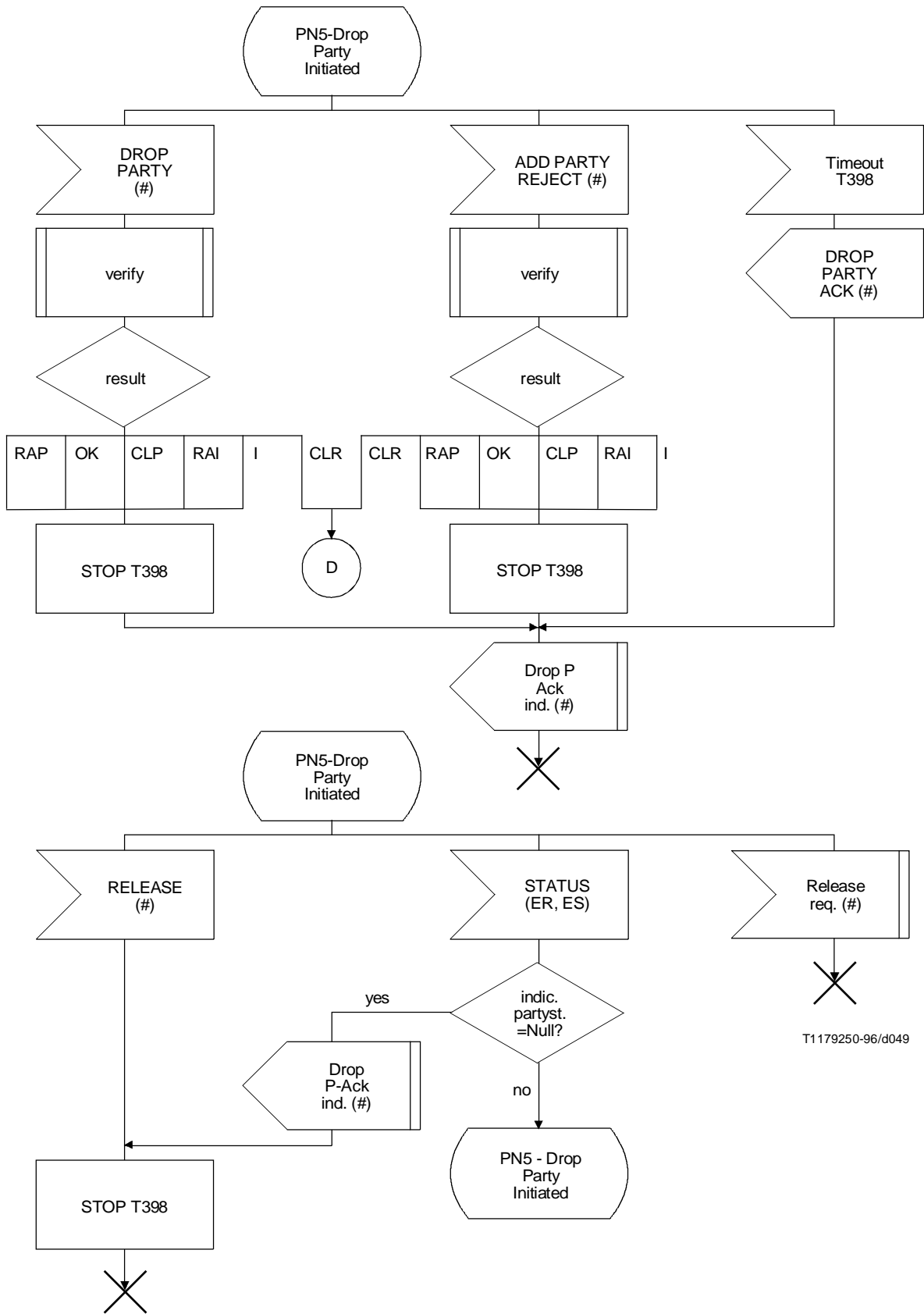


Process Party-Control-N
(Sheet 8 of 13)



Process Party-Control-N

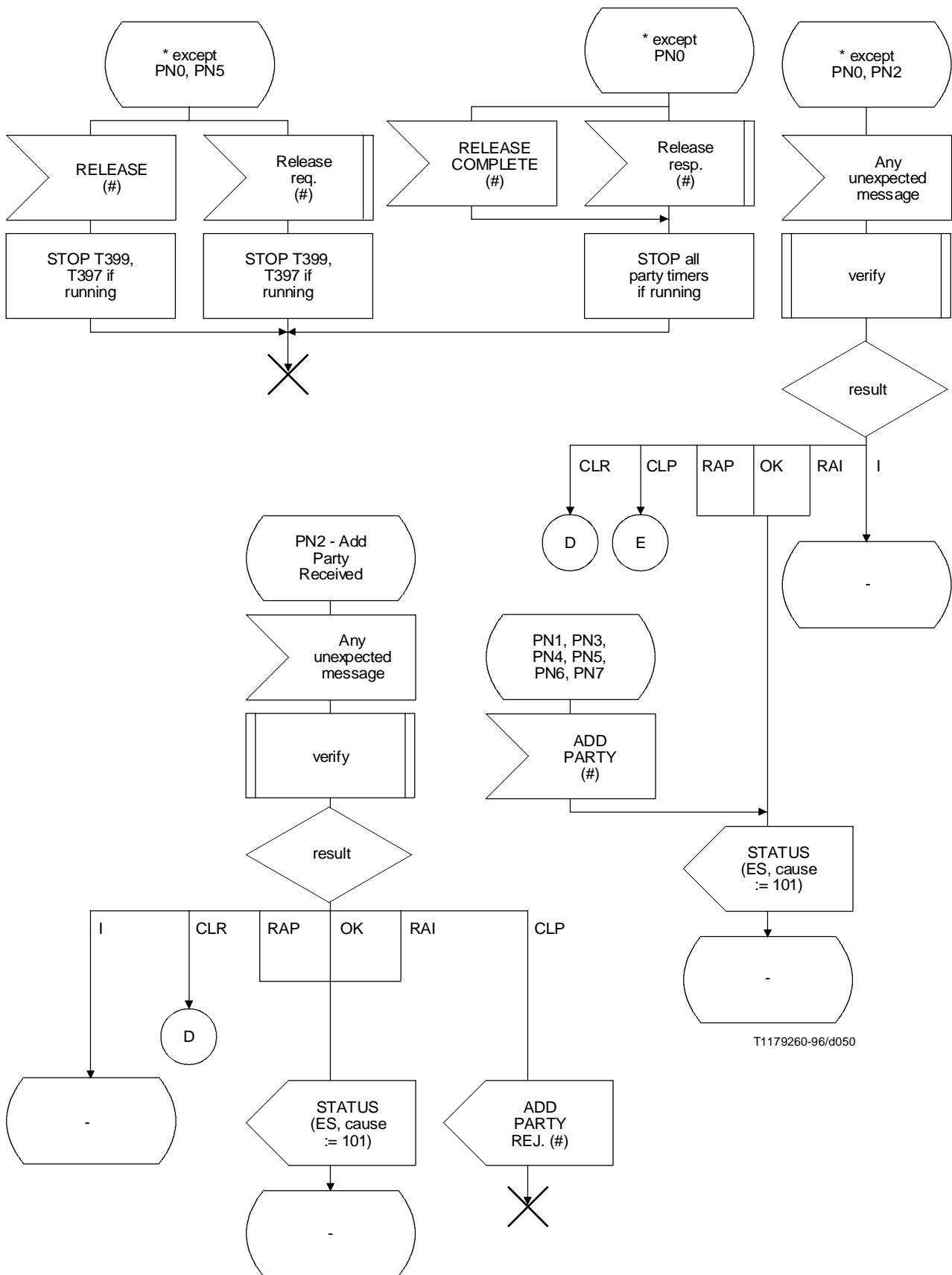
(Sheet 9 of 13)



T1179250-96/d049

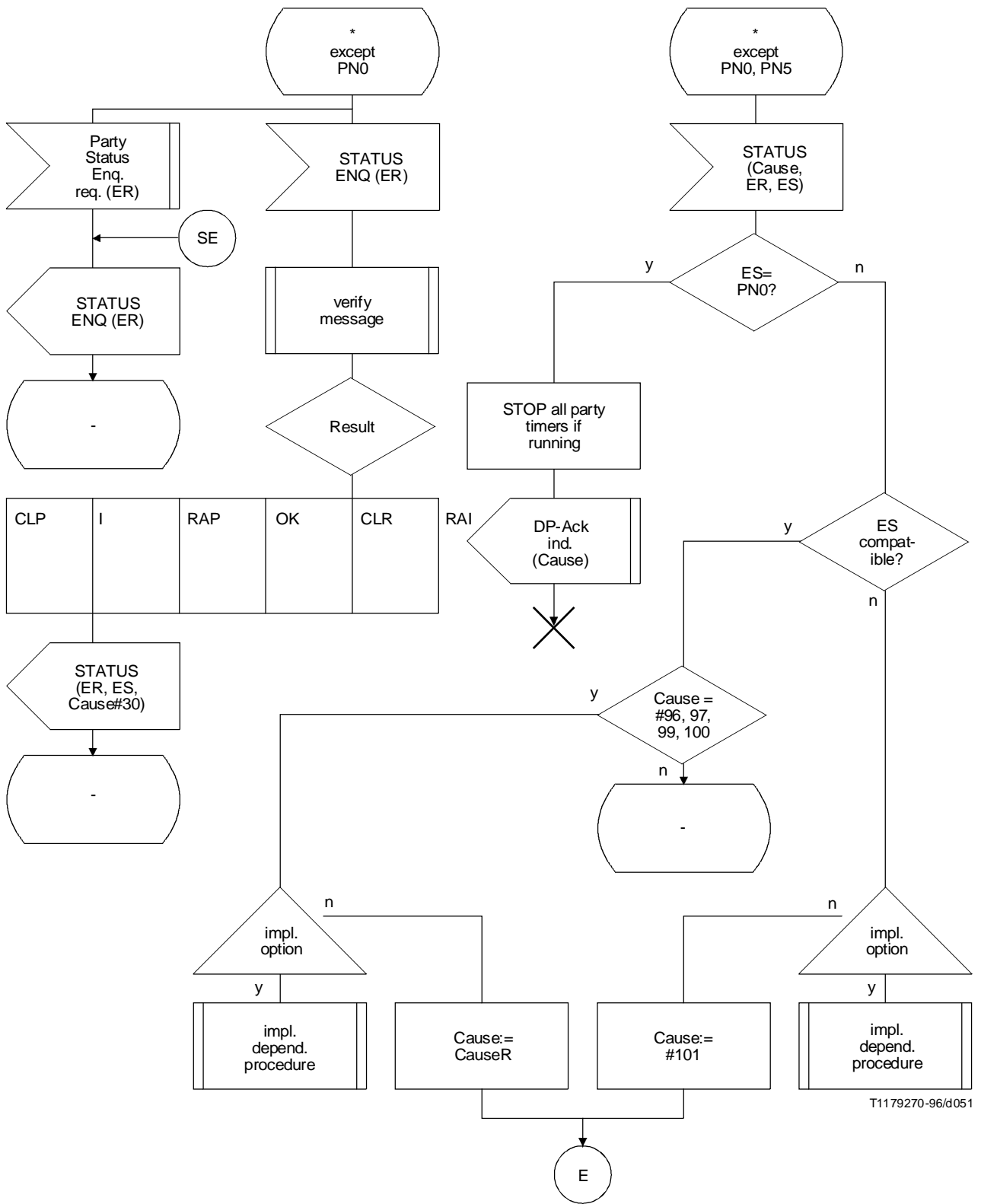
Process Party-Control-N

(Sheet 10 of 13)

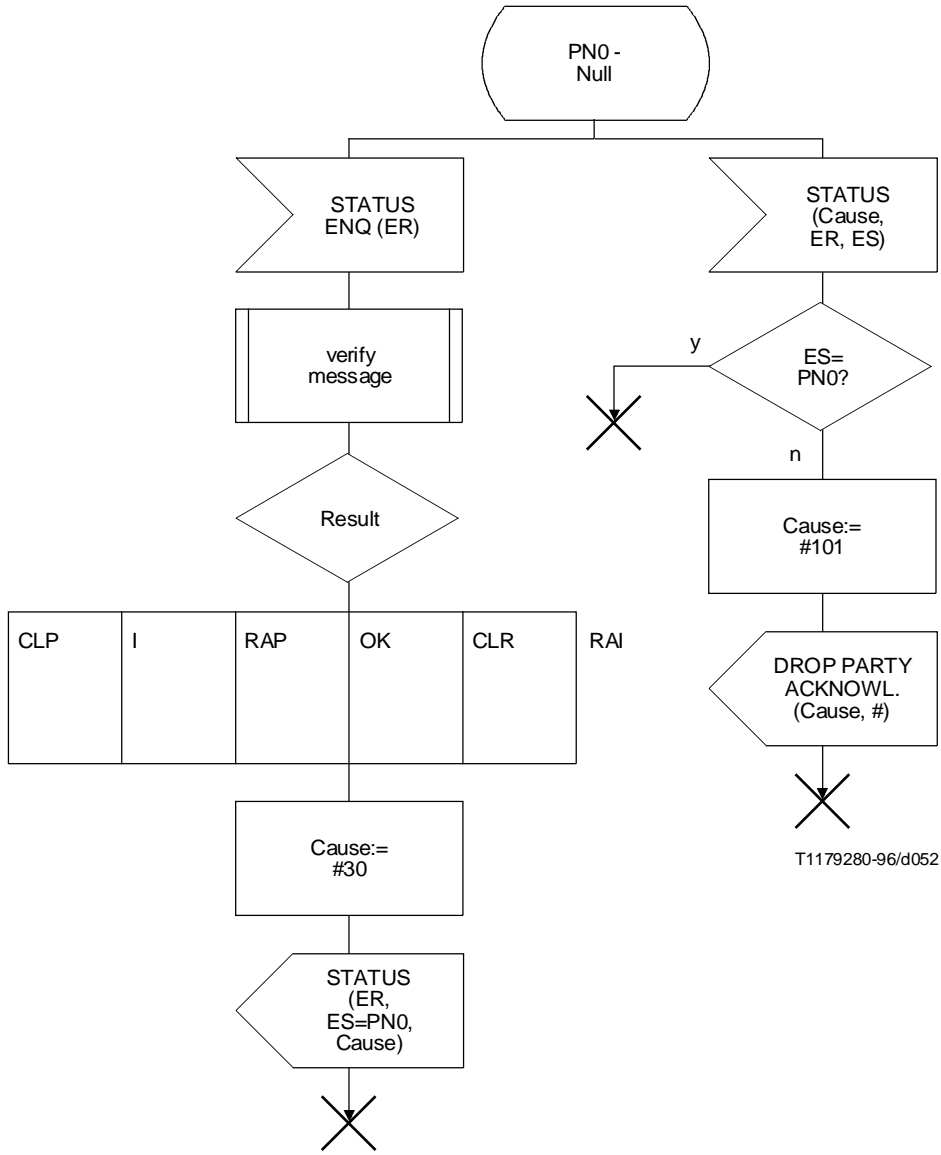


Process Party-Control-N

(Sheet 11 of 13)



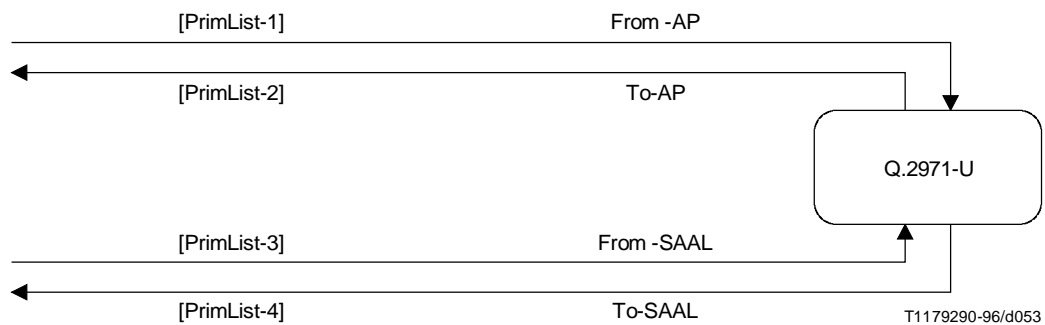
Process Party-Control-N
(Sheet 12 of 13)



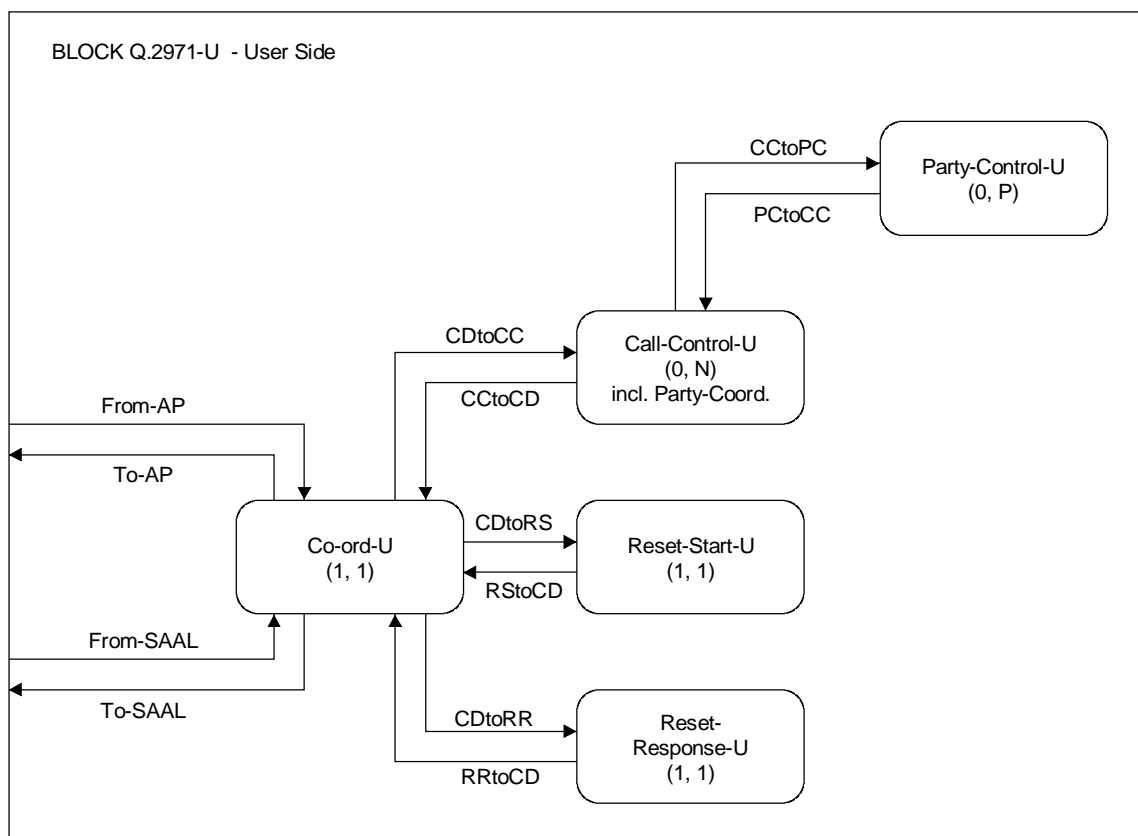
Process Party-Control-N
(Sheet 13 of 13)

F.2 SYSTEM Q.2971 User Side

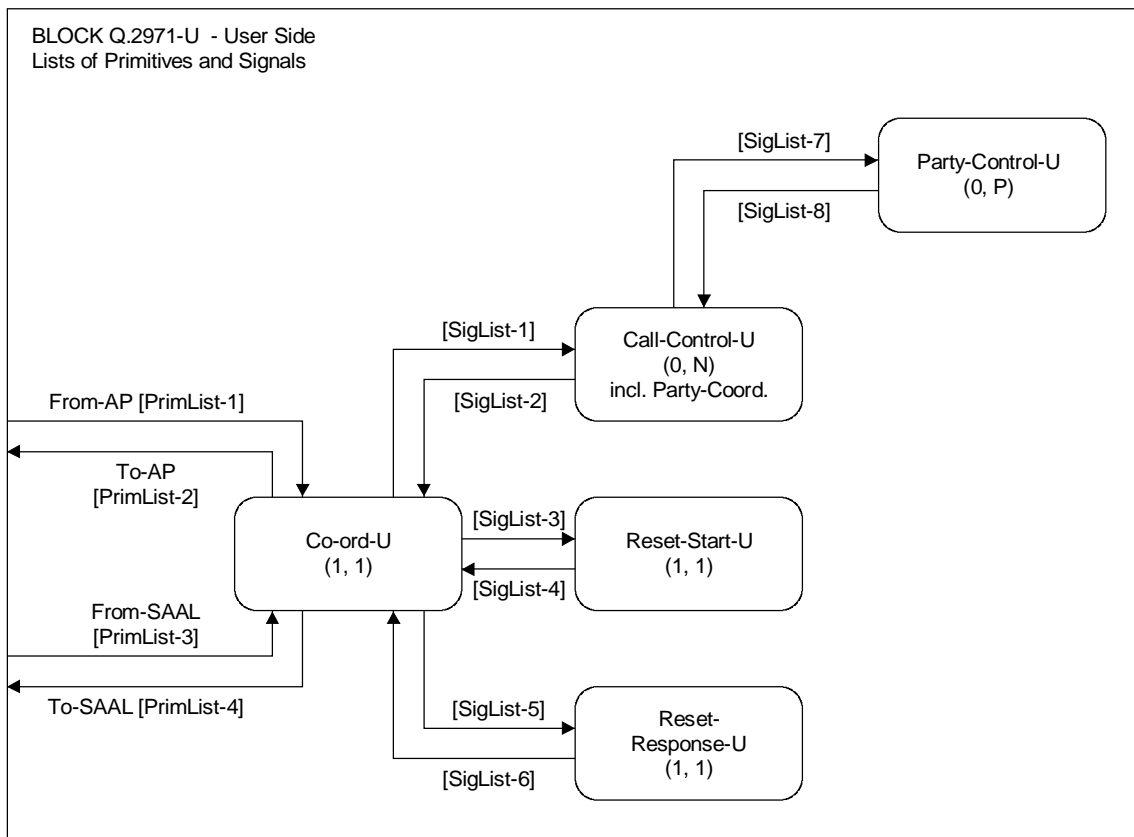
F.2.1 SYSTEM DIAGRAM – User Side



AP Application Process
 Prim list List of Primitives
 (see Coord-U process)



AP Application Process
 CC Call Control
 CD Co-ord Process
 PC Party Control
 RR Reset-Response
 RS Reset-Start



T1173430-95/d055

AP Application Process
PrimList List of Primitives
SigList List of Signals

F.2.2 Symbols and abbreviations definitiv

F.2.2.1 Acronyms

See Annex A/Q.2931 and Annex J/Q.2931.

Additional Acronyms:

- AP:= – Application Process (in case of process)
- Add Party (in case of messages and signals)
- CS:= Call State
- CLP:= Clear Party
- CLR:= Clear Call
- ER:= Endpoint Reference
- ES:= Endpoint State (=Party State)
- I:= Ignore
- n:= no
- PC:= Party Control
- pmp:= point-to-multipoint
- pt-pt:= point-to-point
- RAI:= Report Status and Ignore

RAP:= Report Status and Proceed
RC:= RELEASE COMPLETE
SE:= Status Enquiry
TOC:= Type of Call/Connection
y:= yes

F.2.2.2 List of processes

Co-ord-U = Coordination function for all DSS 2 calls and for the Reset-Start-U and Reset-Response-U processes.

Call-Control-U = Process that performs the call/connection-specific signalling functions, and the coordination function for the party-control-U processes of a call/connection.

Reset-Start-U = Process that starts the RESTART procedure on the user side.

Reset-Response-U = Process that responds to a RESTART message on the user side.

Party-Control-U = Process that performs the party-specific signalling functions of a party within a call/connection.

F.2.2.3 Lists of states

F.2.2.3.1 Co-ord-U

- CU0 – AAL Connection Released
- CU1 – AAL Awaiting Establish
- CU2 – AAL Awaiting Release
- CU3 – AAL Connection Established

F.2.2.3.2 Call-Control-U

See clause 2/Q.2931.

F.2.2.3.3 Reset-Start-U

- Rest-U0 – Null
- Rest-U1 – Restart Request

F.2.2.3.4 Reset-Response-U

- Rest-U0 – Null
- Rest-U2 – Restart

F.2.2.3.5 Party-Control-U

- PU0 – Null
- PU1 – Add Party Initiated
- PU2 – Add Party Received
- PU3 – Party Alerting Delivered
- PU4 – Party Alerting Received
- PU5 – Drop Party Initiated
- PU6 – Drop Party Received
- PU7 – Active

F.2.2.4 Lists of primitives

F.2.2.4.1 [PrimList-1] (from AP to Co-ord-U)

See Annex A/Q.2931, in addition:

- Add Party req.
- Add Party Acknowledge req.
- Add Party Reject req.
- Party Alerting req.
- Drop Party req.
- Drop Party Acknowledge req.
- Status Enquiry req.

F.2.2.4.2 [PrimList-2] (from Co-ord-U to AP)

See Annex A/Q.2931, in addition:

- Add Party ind.
- Add Party Acknowledge ind.
- Add Party Reject ind.
- Party Alerting ind.
- Drop Party ind.
- Drop Party Acknowledge ind.
- Party Status ind.

F.2.2.4.3 [PrimList-3] (from S-AAL to Co-ord-U)

See Annex A/Q.2931.

F.2.2.4.4 [PrimList-4] (from Co-ord-U to S-AAL)

See Annex A/Q.2931.

F.2.2.5 Lists of signals

F.2.2.5.1 [SigList-1] (from Co-ord-U to Call-Control-U)

See Annex A/Q.2931, in addition:

- Party-related signals corresponding to primitives listed in F.2.2.4.1 above.
- Additional party-related messages:
 - ADD PARTY
 - ADD PARTY ACKNOWLEDGE
 - ADD PARTY REJECT
 - PARTY ALERTING
 - DROP PARTY
 - DROP PARTY ACKNOWLEDGE

F.2.2.5.2 [SigList-2] (from Call-Control-U to Co-ord-U)

See Annex A/Q.2931, in addition:

- Party-related signals corresponding to primitives listed in F.2.2.4.2 above.
- Additional party-related messages as in F.2.2.5.1 above.