



INTERNATIONAL TELECOMMUNICATION UNION

**ITU-T**

TELECOMMUNICATION  
STANDARDIZATION SECTOR  
OF ITU

**Q.615**

**INTERWORKING OF SIGNALLING SYSTEMS**

---

**LOGIC PROCEDURES FOR INCOMING  
SIGNALLING SYSTEM R1**

**ITU-T Recommendation Q.615**

(Extract from the *Blue Book*)

---

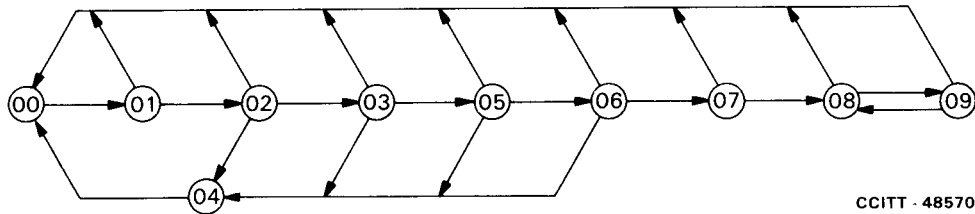
## NOTES

1 ITU-T Recommendation Q.615 was published in Fascicle VI.6 of the *Blue Book*. This file is an extract from the *Blue Book*. While the presentation and layout of the text might be slightly different from the *Blue Book* version, the contents of the file are identical to the *Blue Book* version and copyright conditions remain unchanged (see below).

2 In this Recommendation, the expression “Administration” is used for conciseness to indicate both a telecommunication administration and a recognized operating agency.

**Recommendation Q.615**

**LOGIC PROCEDURES FOR INCOMING SIGNALLING SYSTEM R1**



<i>State number</i>	<i>State description</i>	<i>Sheet reference</i>	<i>Timers running</i>
00	Idle	1, 2	
01	Wait for register activation	1	
02	Wait for first register signal (KP)	1	$t_1$
03	Wait for next register signal	1	$t_1$
04	Wait for clear-forward	1	
05	Wait for digit analysis	2	
06	Wait for register deactivation	2	
07	Wait for answer	2	
08	Answered	2	
09	Clear-back	2	

FIGURE 1/Q.615

**State overview diagram for incoming Signalling System R1**

*Supervisory timers for incoming Signalling System R1*

$t_1 = 10-20$  s      Recommendation Q.325

*Remarks to facilitate reading and understanding the SDL flow chart*

- a) The procedure described in Recommendation Q.313, § 2.3.3.2, e) is not shown because this has no impact on the interworking.
- b) This incoming Signalling System R1 procedure assumes the inclusion of country code digits in the case where Signalling System R1 is used to access the outgoing international exchange.

FIGURE 2/Q.615

**Notes to incoming Signalling System R1**

Connector reference

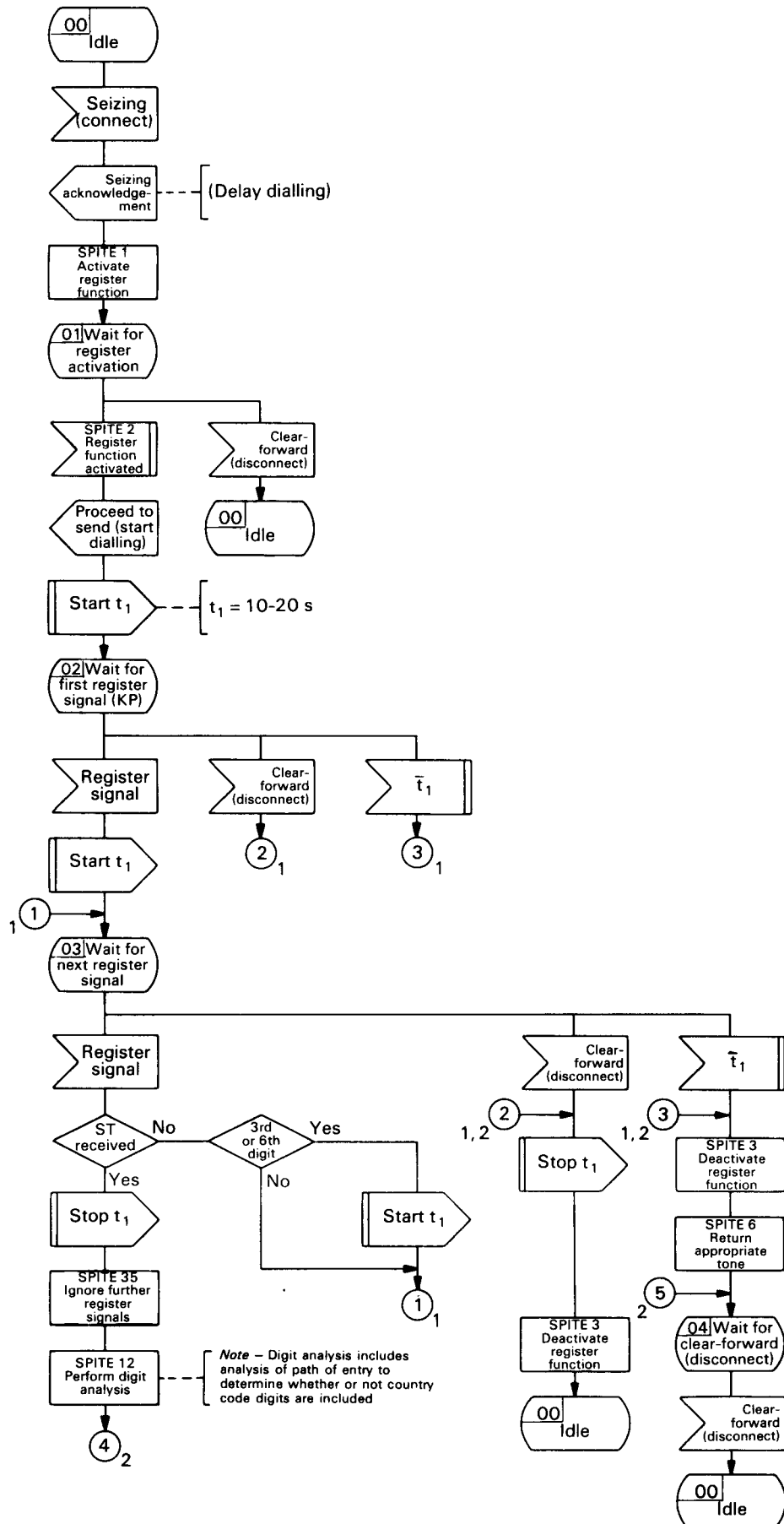
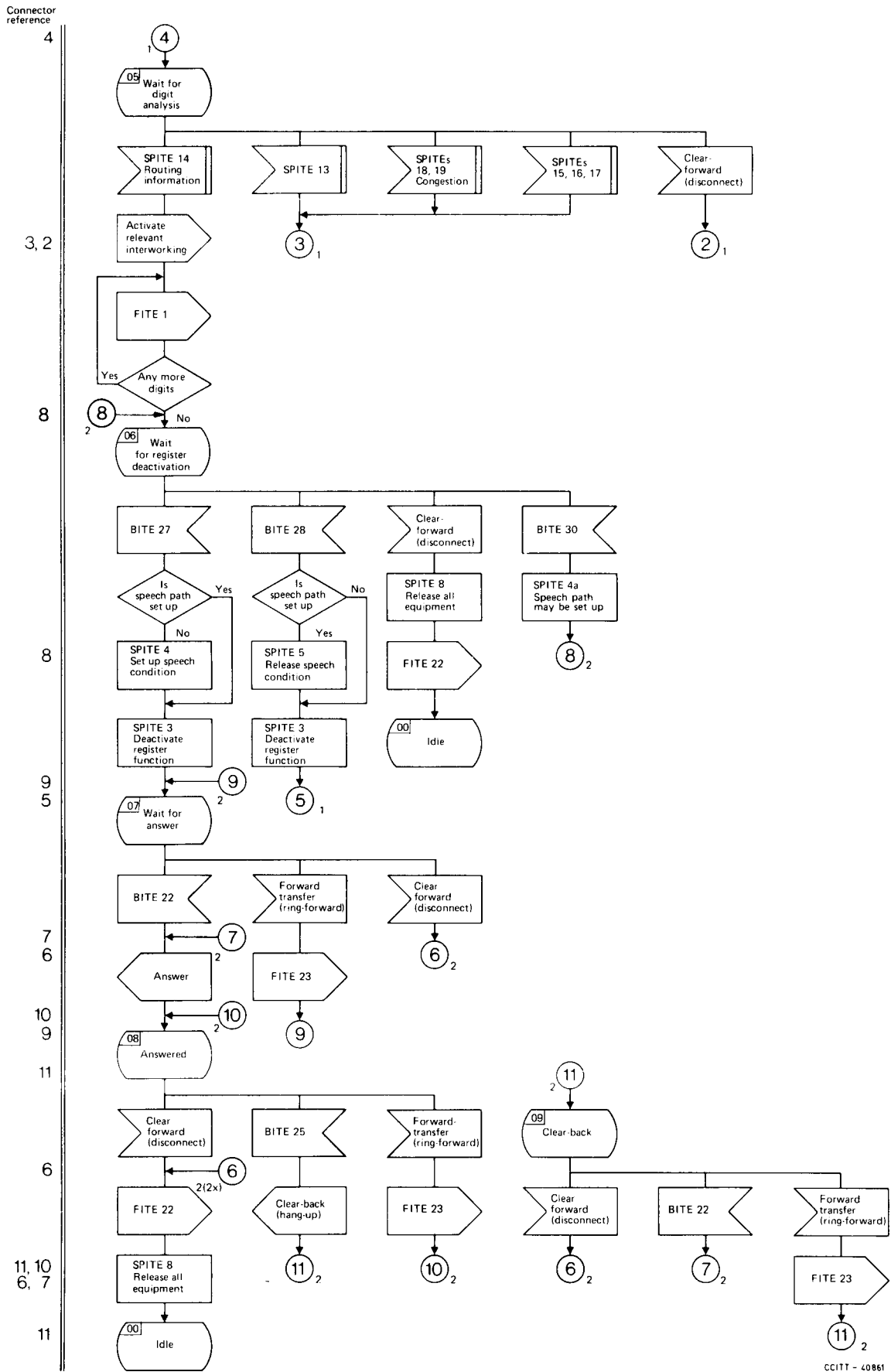


FIGURE 3/Q.615 (Sheet 1 of 2)  
Incoming Signalling System R1

CCITT - 40850



CCITT - 40861

FIGURE 3/Q.615 (Sheet 2 of 2)

Incoming Signalling System R1