



Getting started

Windows 9x/NT users:

When you insert the ITU CD-ROM into your CD reader, the ITU Menu opens automatically provided you have not de-activated the autostart option.

If nothing happens after the insertion of the ITU CD-ROM:

- open Microsoft Windows Explorer(tm) or an equivalent program;
 - select the CD-ROM drive;
 - double click "StartCD.bat";
- or
- open the "\\Acrobat4\\Reader\\" folders and double click "Acrord32.exe";
 - then, using File, Open, select the file entitled "Menu.pdf" located at the root level of the CD-ROM.

Windows 3.1, Macintosh and Unix users:

Install Adobe Acrobat Reader 4.xx with Search into your machine. For your convenient, most of the Acrobat Readers can be found on CD # 2 under \\Utils\\Acrobat directory. After Acrobat Reader with Search has been installed, run this and open the file called "Menu.pdf" found on the root directory of the CD # 1.

While performing the installation, read carefully the Adobe Licence Agreement regarding restrictions on the use of Acrobat Reader.

For more information about Adobe Acrobat, please visit their web site at <http://www.adobe.com>

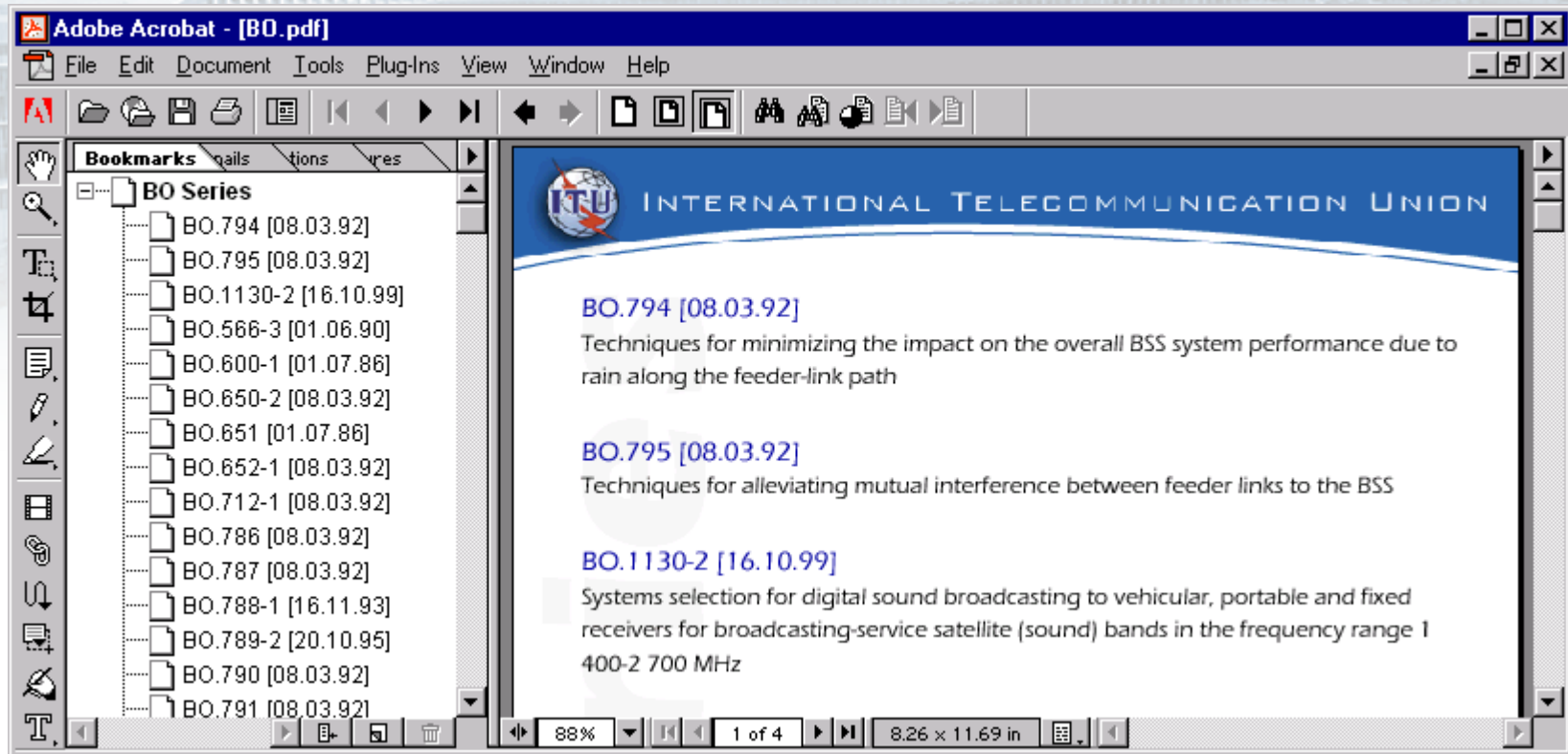


General Information

- All documents on this CD-ROM are presented in the Microsoft™ Word Format and Adobe™ Acrobat Portable Document Format™ (PDF).
- The Adobe Acrobat PDF collection is fully indexed and searchable with the Acrobat Search for CD-ROM retrieval software provided with the product.
- PDF documents can be printed on PostScript™ and non-PostScript printers. The Shrink to fit option reduces (and, if necessary, rotates) oversized pages to fit on the paper size currently installed in your printer.
- Blue text and buttons mean hypertext links which are identified by a “pointing finger” cursor on the screen.
- Select the Acrobat Reader Help option to obtain information on how to use Acrobat Reader™. More information about Adobe Acrobat can be accessed on web: <http://www.adobe.com>
- Acrobat Reader, MS Word Viewer and Winzip are copyright protected; therefore, please read carefully the relevant Licenses Agreement.



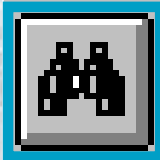
Bookmarks and Hypertext Links



- To navigate quickly, use the bookmarks on the left side of the screen to access the next menu contained in this CD-ROM. Click on plus to open sub-levels or click on minus to close sub-levels.
- Text in blue and buttons mean Hypertext Links which are identified by a "pointing finger" cursor on the screen. Most bookmarks have a corresponding hypertext links screen that you can use for navigation.



Use the Find Tool



- to find text and/or expression within the PDF document. All the occurrences found will be highlighted.

Adobe Acrobat - [0566-3-e.pdf]

File Edit Document Tools Plug-Ins View Window Help

area delineated by the contour corresponding to a power flux-density level exceeded for 99% of the worst month of $-103 \text{ dB(W/m}^2\text{)}$ for a Region 1 and 3 country, and $-107 \text{ dB(W/m}^2\text{)}$ for a Region 2 country. There will usually be an area outside the service area but within the coverage area in which the power flux-density will be at least equivalent to the minimum specified value; however, protection against interference will not be provided in this area.

Note 3 - These are boundaries delineated minimum in the case of generally more peak parts of the objectives for shaped beam antennas.

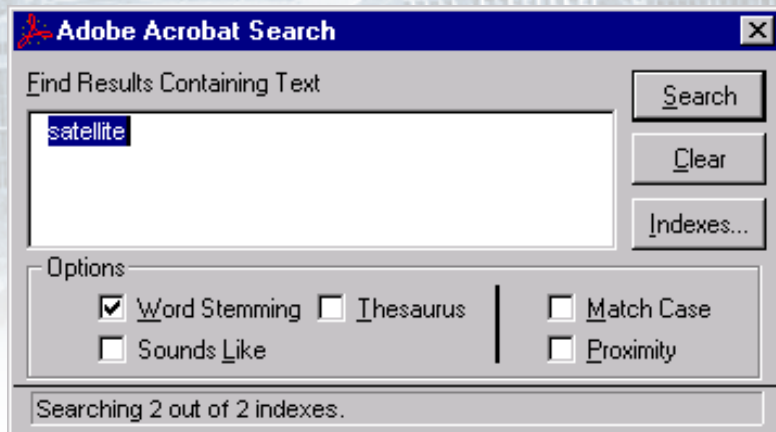
3.3 **Beam area**

The area delineated by the intersection of the half-power beam of the satellite transmitting antenna with the surface of the Earth.

Note - The beam area is simply that area on the Earth's surface corresponding to the -3 dB points on the satellite antenna radiation pattern. In many cases the beam area would almost coincide with the coverage area, the discrepancy being accounted for by the permanent difference in path lengths from the satellite throughout the beam area, and also by the permanent variations, if any, in propagation factors across the area. However, in the case of 12 GHz, for a service area where the maximum dimension as seen from the satellite position is less than the minimum satellite antenna half-power beamwidth value adopted for planning purposes (0.6° for the Regions 1 and 3 Plan and 0.8° for the Region 2 Plan), there could be a significant difference between the beam area and the coverage area.

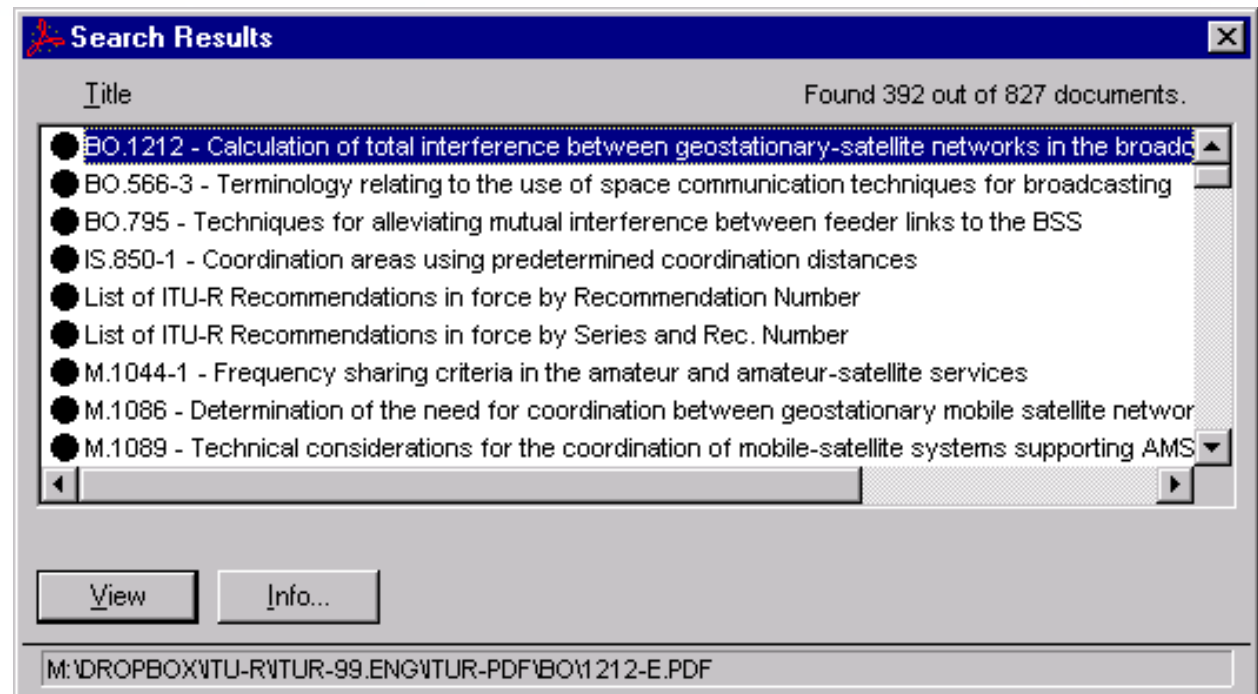


Adobe Acrobat Search



- to search Recommendation quickly or find specific information in this CD-ROM.

- The Search Results are displayed and can be accessed by double clicking on the title.

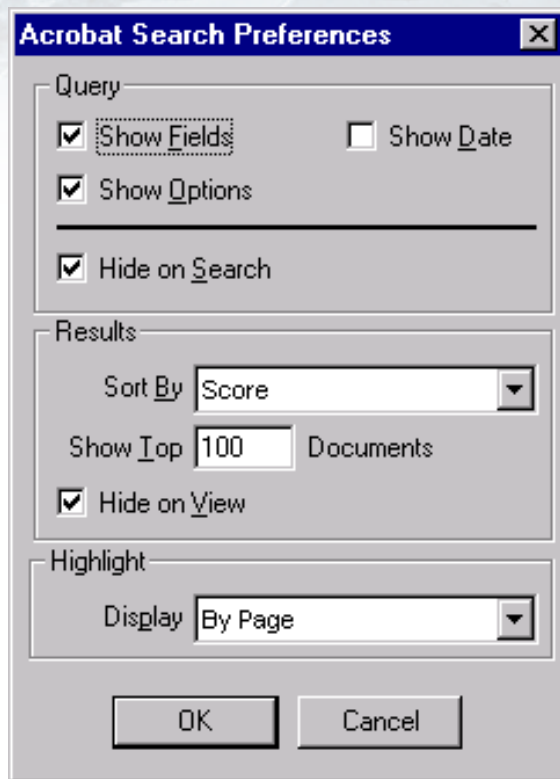




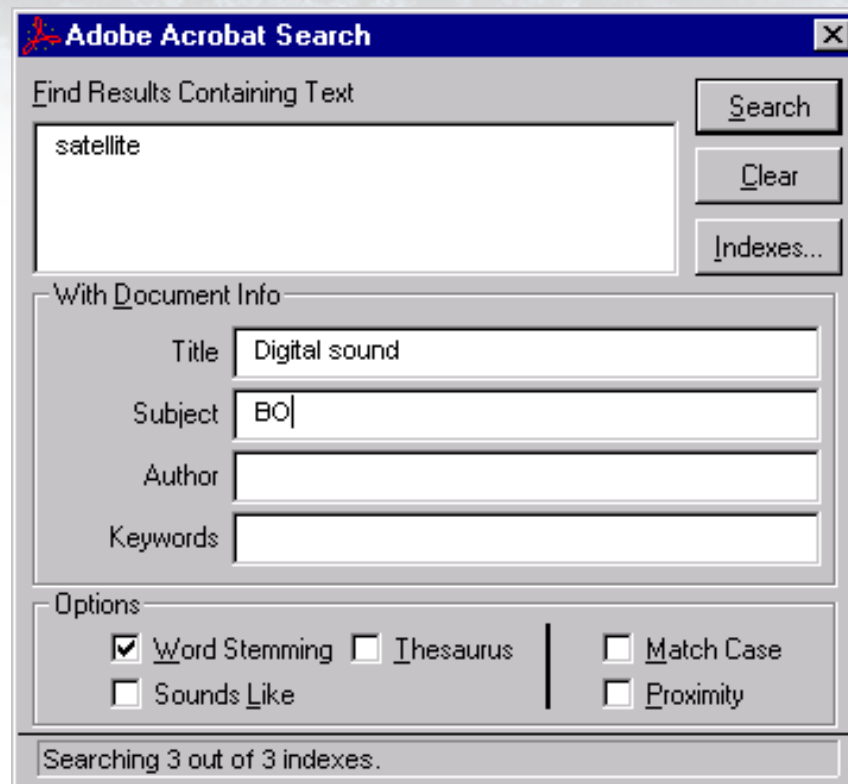
Advanced searches using the “General Info”

- Execute advanced searches by typing in Title, Subject, Author or Keywords inside the Document Info window. This can be set by checking the ‘Show Fields’ under File/Preferences/Search.

Enable Show fields:



Then execute advanced search with Document Info.:





Searching with Boolean expressions, wild cards and parentheses:

You can use **AND**, **OR**, and **NOT** operators to build a Boolean expression that will search for specific words as well as **wild cards** and **parentheses** to fine tune the expression.

Operators :

- AND** or **&** to find documents containing two or more search terms
(e.g. *sound AND television*)
- OR** or **|** or **,** to find documents containing any of two or more search terms
(e.g. *television OR tv*)
- NOT** or **!** to exclude documents that contain a search term
(e.g. *NOT telecommunication*)

Wild cards:

- ?** to replace one character
(e.g. *BO.10?*)
- *** to replace all following characters
(e.g. *broad**)

Parentheses:

- ()** to change the order of evaluation
(e.g. *(television* OR tv) AND sound*)



Toolbar



A B C D E F G H I J K L M N O P Q R S T U V

A	Adobe Online	H	First Page	P	Fit Width
B	Open	I	Previous Page	Q	Find
C	Print	J	Next Page	R	Search
D	Show/Hide Navigation Pane	K	Last Page	S	Search Results
E	Hand tool (default)	L	Previous View	T	Previous Highlight
F	Zoom In	M	Next View	U	Next Highlight
G	Select Text	N	Actual Size	V	Web Browser
		O	Fit in Window		



1	2	3	4	5
1	Show/Hide Navigation Pane	4	Page Size	
2	Magnification	5	Scroll bar	
3	Number of Pages			

Note : Some toolbars might have different presentation depending on the version and setup installed .



software development

For questions related to this and other ITU electronic titles, please contact:

International Telecommunication Union (ITU)
Electronic Publishing Service
1211 Geneva 20, Switzerland

Email: Epub@itu.int
Fax: +41 22 730 6612
Telex: +421000 uit ch

Web: <http://www.itu.int/publications>

(To enable the web link above, setup the path of your Web browser under File, Preferences, Weblink).