

ETSI GS MEC 014 V1.1.1 (2018-02)



GROUP SPECIFICATION

Mobile Edge Computing (MEC); UE Identity API

Disclaimer

The present document has been produced and approved by the Mobile Edge Computing (MEC) ETSI Industry Specification Group (ISG) and represents the views of those members who participated in this ISG.
It does not necessarily represent the views of the entire ETSI membership.

Reference

DGS/MEC-0014UEidentityAPI

Keywords

API, MEC, UE Identity

ETSI

650 Route des Lucioles
F-06921 Sophia Antipolis Cedex - FRANCE

Tel.: +33 4 92 94 42 00 Fax: +33 4 93 65 47 16

Siret N° 348 623 562 00017 - NAF 742 C
Association à but non lucratif enregistrée à la
Sous-Préfecture de Grasse (06) N° 7803/88

Important notice

The present document can be downloaded from:

<http://www.etsi.org/standards-search>

The present document may be made available in electronic versions and/or in print. The content of any electronic and/or print versions of the present document shall not be modified without the prior written authorization of ETSI. In case of any existing or perceived difference in contents between such versions and/or in print, the only prevailing document is the print of the Portable Document Format (PDF) version kept on a specific network drive within ETSI Secretariat.

Users of the present document should be aware that the document may be subject to revision or change of status.

Information on the current status of this and other ETSI documents is available at

<https://portal.etsi.org/TB/ETSIDeliverableStatus.aspx>

If you find errors in the present document, please send your comment to one of the following services:

<https://portal.etsi.org/People/CommiteeSupportStaff.aspx>

Copyright Notification

No part may be reproduced or utilized in any form or by any means, electronic or mechanical, including photocopying and microfilm except as authorized by written permission of ETSI.

The content of the PDF version shall not be modified without the written authorization of ETSI.

The copyright and the foregoing restriction extend to reproduction in all media.

© ETSI 2018.

All rights reserved.

DECT™, **PLUGTESTS™**, **UMTS™** and the ETSI logo are trademarks of ETSI registered for the benefit of its Members.

3GPP™ and **LTE™** are trademarks of ETSI registered for the benefit of its Members and of the 3GPP Organizational Partners.

oneM2M logo is protected for the benefit of its Members.

GSM® and the GSM logo are trademarks registered and owned by the GSM Association.

Contents

Intellectual Property Rights	4
Foreword.....	4
Modal verbs terminology.....	4
1 Scope	5
2 References	5
2.1 Normative references	5
2.2 Informative references.....	5
3 Definitions and abbreviations.....	6
3.1 Definitions.....	6
3.2 Abbreviations	6
4 Overview	6
5 Description of the feature (informative).....	6
5.1 Introduction	6
5.2 Sequence diagrams	6
5.2.1 General.....	6
5.2.2 UE Identity tag registration.....	6
5.2.3 UE Identity tag de-registration.....	7
6 Data model & Data format (normative)	8
6.1 Introduction	8
6.2 Resource data types	8
6.2.1 Introduction.....	8
6.2.2 Type: UeIdentityTagInfo	8
6.3 Subscription types	8
6.4 Notifications types.....	8
6.5 Referenced structured data types.....	8
6.6 Referenced simple data types	8
7 API definition (normative)	8
7.1 Introduction	8
7.2 Global definitions and resource structure	9
7.3 Resource: individual UeIdentityTagInfo	9
7.3.1 Description.....	9
7.3.2 Resource definition	9
7.3.3 Resource Methods	10
7.3.3.1 GET.....	10
7.3.3.2 PUT.....	10
7.3.3.3 PATCH	11
7.3.3.4 POST.....	11
7.3.3.5 DELETE	11
Annex A (informative): Complementary material for API utilization	12
History	13

Intellectual Property Rights

Essential patents

IPRs essential or potentially essential to normative deliverables may have been declared to ETSI. The information pertaining to these essential IPRs, if any, is publicly available for **ETSI members and non-members**, and can be found in ETSI SR 000 314: *"Intellectual Property Rights (IPRs); Essential, or potentially Essential, IPRs notified to ETSI in respect of ETSI standards"*, which is available from the ETSI Secretariat. Latest updates are available on the ETSI Web server (<https://ipr.etsi.org/>).

Pursuant to the ETSI IPR Policy, no investigation, including IPR searches, has been carried out by ETSI. No guarantee can be given as to the existence of other IPRs not referenced in ETSI SR 000 314 (or the updates on the ETSI Web server) which are, or may be, or may become, essential to the present document.

Trademarks

The present document may include trademarks and/or tradenames which are asserted and/or registered by their owners. ETSI claims no ownership of these except for any which are indicated as being the property of ETSI, and conveys no right to use or reproduce any trademark and/or tradename. Mention of those trademarks in the present document does not constitute an endorsement by ETSI of products, services or organizations associated with those trademarks.

Foreword

This Group Specification (GS) has been produced by ETSI Industry Specification Group (ISG) Mobile Edge Computing (MEC).

Modal verbs terminology

In the present document "**shall**", "**shall not**", "**should**", "**should not**", "**may**", "**need not**", "**will**", "**will not**", "**can**" and "**cannot**" are to be interpreted as described in clause 3.2 of the [ETSI Drafting Rules](#) (Verbal forms for the expression of provisions).

"**must**" and "**must not**" are **NOT** allowed in ETSI deliverables except when used in direct citation.

1 Scope

The present document focuses on the UE Identity functionality. It describes the related application policy information (including authorization, access control and traffic rule pattern format), information flows, required information and service aggregation patterns. The present document specifies the necessary API, data model and data format, considering existing API(s) if applicable.

2 References

2.1 Normative references

References are either specific (identified by date of publication and/or edition number or version number) or non-specific. For specific references, only the cited version applies. For non-specific references, the latest version of the referenced document (including any amendments) applies.

Referenced documents which are not found to be publicly available in the expected location might be found at <https://docbox.etsi.org/Reference>.

NOTE: While any hyperlinks included in this clause were valid at the time of publication, ETSI cannot guarantee their long term validity.

The following referenced documents are necessary for the application of the present document.

- [1] ETSI GS MEC 001: "Mobile Edge Computing (MEC); Terminology".
- [2] ETSI GS MEC 002: "Mobile Edge Computing (MEC); Technical Requirements".
- [3] ETSI GS MEC 009: "Mobile Edge Computing (MEC); General principles for Mobile Edge Service APIs".
- [4] IETF RFC 2818: "HTTP Over TLS".

NOTE: Available at <https://tools.ietf.org/html/rfc2818>.

- [5] IETF RFC 5246: "The Transport Layer Security (TLS) Protocol Version 1.2".

NOTE: Available at <https://tools.ietf.org/html/rfc5246>.

2.2 Informative references

References are either specific (identified by date of publication and/or edition number or version number) or non-specific. For specific references, only the cited version applies. For non-specific references, the latest version of the referenced document (including any amendments) applies.

NOTE: While any hyperlinks included in this clause were valid at the time of publication, ETSI cannot guarantee their long term validity.

The following referenced documents are not necessary for the application of the present document but they assist the user with regard to a particular subject area.

- [i.1] OpenAPI Specification.

NOTE: Available at <https://github.com/OAI/OpenAPI-Specification>.

3 Definitions and abbreviations

3.1 Definitions

For the purposes of the present document, the terms and definitions given in ETSI GS MEC 001 [1] apply.

3.2 Abbreviations

For the purposes of the present document, the abbreviations given in ETSI GS MEC 001 [1] and the following apply:

API	Application Programming Interface
HTTP	Hypertext Transfer Protocol
IETF	Internet Engineering Task Force

4 Overview

The present document specifies the API for the UE Identity feature to support the corresponding requirements defined for the Mobile Edge Computing in ETSI GS MEC 002 [2].

Clause 5 contains the description of the feature and the information flows of the procedures. Clause 6 describes the data model and data format applied in the UE Identity API. Clause 7 is the actual API definition of the UE Identity feature.

5 Description of the feature (informative)

5.1 Introduction

The purpose of the UE Identity feature is to allow UE specific traffic rules in the mobile edge system.

When the mobile edge system supports the UE Identity feature, the mobile edge platform provides the functionality for a mobile edge application to register a tag (representing a UE) or a list of tags. Each tag has been mapped into a specific UE in the mobile network operator's system. The mobile edge platform is provided with the mapping information. How the mapping is realized is outside the scope of the present document. The UE Identity tag registration triggers the mobile edge platform to activate the corresponding traffic rule(s) linked to the tag. Later, if the application does not wish to use the traffic rule for that user, it may de-register the UE Identity tag by invoking the de-registration procedure.

5.2 Sequence diagrams

5.2.1 General

The following clauses describe how mobile edge applications can register and de-register tags as part of UE Identity feature. The related sequence diagrams are presented.

5.2.2 UE Identity tag registration

Figure 5.2.2-1 illustrates the message flow for the UE Identity tag registration procedure. The tag is used in UE Identity feature.

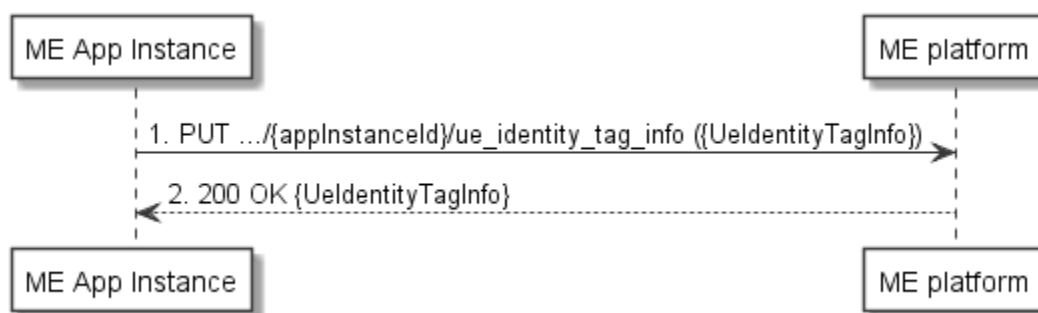


Figure 5.2.2-1: UE Identity tag registration

The UE Identity tag registration procedure consists of the following steps:

- 1) The mobile edge application instance sends a PUT request with the message body containing the UeIdentityTagInfo data structure with the state set to REGISTERED to the mobile edge platform. The variable {appInstanceId} is set to the application instance identifier assigned to the mobile edge application instance.
- 2) The mobile edge platform sends "200 OK" response with the message body containing the UeIdentityTagInfo data structure with the state set to REGISTERED.

Once the tag or the list of tags, is successfully registered in the mobile edge platform the related traffic rules can then be activated.

NOTE: It is out of the scope of the present document how the mobile edge application obtains the UE Identity tag(s).

5.2.3 UE Identity tag de-registration

Figure 5.2.3-1 illustrates the message flow for the UE Identity tag deregistration procedure.

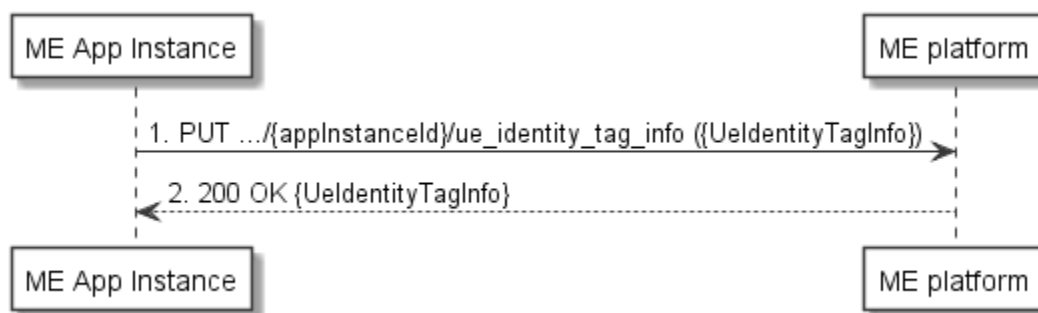


Figure 5.2.3-1: UE Identity tag de-registration

The UE Identity tag deregistration procedure consists of the following steps:

- 1) The mobile edge application instance sends a PUT request with the message body containing the UeIdentityTagInfo data structure with the state set to UNREGISTERED to the mobile edge platform. The variable {appInstanceId} is set to the application instance identifier assigned to the mobile edge application instance.
- 2) The mobile edge platform sends "200 OK" response with the message body containing the UeIdentityTagInfo data structure with the state set to UNREGISTERED.

Once the tag or the list of tags is successfully deregistered in the mobile edge platform the related traffic rules are then deactivated.

6 Data model & Data format (normative)

6.1 Introduction

The following clauses specify the data types that are used to implement the UE Identity feature, for which the relevant sequence diagrams are described in clauses 5.2.2 and 5.2.3.

6.2 Resource data types

6.2.1 Introduction

This clause defines data structures to be used in resource representations.

6.2.2 Type: UeIdentityTagInfo

This type represents the information of UE Identity tag used in the UE Identity feature.

Table 6.2.2-1: Definition of type UeIdentityTagInfo

Attribute name	Data type	Cardinality	Description
ueIdentityTags	Structure (inlined)	1..N	1 to N tags presented by a ME Application instance to a ME Platform
>ueIdentityTag	String	1	Specific tag presented by a ME Application instance to a ME Platform
>state	Enum (inlined)	1	The following numeric values are defined: 0 = UNREGISTERED 1 = REGISTERED

6.3 Subscription types

In the present document, no subscription data types are defined.

6.4 Notifications types

In the present document, no notifications data types are defined.

6.5 Referenced structured data types

In the present document, no referenced structured data types are defined.

6.6 Referenced simple data types

In the present document, no referenced simple data types are defined.

7 API definition (normative)

7.1 Introduction

This clause defines the resources and operations of the UEIdentity API.

7.2 Global definitions and resource structure

All resource URIs of this API shall have the following root:

{apiRoot}/ui/v1/

The "apiRoot" is discovered using the service registry. The API shall support HTTP over TLS (also known as HTTPS - see IETF RFC 2818 [4]). TLS version 1.2 as defined by IETF RFC 5246 [5] shall be supported. HTTP without TLS is not recommended. All resource URIs in the sub-clauses below are defined relative to the above root URI.

The content format JSON shall be supported.

The JSON format is signalled by the content type "application/json".

This API supports additional application-related error information to be provided in the HTTP response when an error occurs. See clause 7.15 of ETSI GS MEC 009 [3] for more information.

Figure 7.2-1 illustrates the resource URI structure of this API.

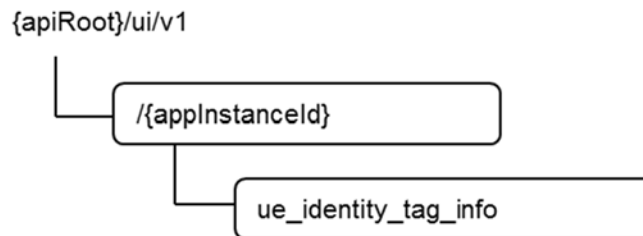


Figure 7.2-1: Resource URI structure of the UE Identity API.

Table 7.2-1 provides an overview of the resources defined by the present document, and the applicable HTTP methods.

Table 7.2-1: Resources and methods overview

Resource name	Resource URI	HTTP method	Meaning
Individual UeIdentityTagInfo	.../{appInstanceId}/ue_identity_tag_info	GET	Retrieve information about specific UeIdentityTagInfo
		PUT	Register/De-register the information about specific UeIdentityTagInfo

7.3 Resource: individual UeIdentityTagInfo

7.3.1 Description

This resource is used to represent the information of a single UE Identity tag resource, which follows the resource data type of "UeIdentityTagInfo" as specified in clause 6.2.2.

7.3.2 Resource definition

Resource URI: {apiRoot}/ui/v1/{appInstanceId}/ue_identity_tag_info

Resource URI Variables for this resource are defined in table 7.3.2-1.

Table 7.3.2-1: Resource URI Variables for resource "individual UeIdentityTagInfo"

Name	Definition
apiRoot	See clause 7.2
appInstanceId	Represents a mobile edge application instance

7.3.3 Resource Methods

7.3.3.1 GET

This method retrieves information about a UeIdentityTagInfo resource.

This method shall comply with the URI query parameters, request and response data structures, and response codes, as specified in the tables 7.3.3.1-1 and 7.3.3.1-2.

Table 7.3.3.1-1: URI query parameters supported by the GET method on this resource

Name	Data type	Cardinality	Remarks
ueIdentityTag	String	1..N	Represents one or more UEs

Table 7.3.3.1-2: Data structures supported by the GET request/response on this resource

Request body	Data type	Cardinality	Remarks	
	n/a			
Response body	Data type	Cardinality	Response codes	Remarks
	UeIdentityTagInfo	1	200 OK	It is used to indicate nonspecific success. The response body contains a representation of the UeIdentityTagInfo resource.
	ProblemDetails	0..1	400 Bad Request	It is used to indicate that incorrect parameters were passed to the request. In the returned ProblemDetails structure, the "detail" attribute should convey more information about the error.
	ProblemDetails	0..1	404 Not Found	It is used when a client provided a URI that cannot be mapped to a valid resource URI. In the returned ProblemDetails structure, the "detail" attribute should convey more information about the error.
ProblemDetails	1	403 Forbidden	403 Forbidden	The operation is not allowed given the current status of the resource. More information shall be provided in the "detail" attribute of the "ProblemDetails" structure.

7.3.3.2 PUT

This method registers/deregisters one or more UE Identity tags. It has "replace" semantics.

This method is typically used in "UE Identity tag registration" procedure as described in clause 5.2.2 and "UE Identity tag de-registration" procedure as described in clause 5.2.3.

This method shall comply with the URI query parameters, request and response data structures, and response codes, as specified in the tables 7.3.3.2-1 and 7.3.3.2-2.

Table 7.3.3.2-1: URI query parameters supported by the PUT method on this resource

Name	Data type	Cardinality	Remarks
n/a			

Table 7.3.3.2-2: Data structures supported by the PUT request/response on this resource

Request body	Data type	Cardinality	Remarks	
	UeIdentityTagInfo	1	The updated "state" for each included UE Identity tag is included in the entity body of the request.	
Response body	Data type	Cardinality	Response codes	Remarks
	UeIdentityTagInfo	1	200 OK	It is used to indicate success. The response body contains a representation of the UeIdentityTagInfo resource.
	ProblemDetails	0..1	400 Bad Request	It is used to indicate that incorrect parameters were passed to the request. In the returned ProblemDetails structure, the "detail" attribute should convey more information about the error.
	ProblemDetails	0..1	404 Not Found	It is used when a client provided a URI that cannot be mapped to a valid resource URI. In the returned ProblemDetails structure, the "detail" attribute should convey more information about the error.
	ProblemDetails	1	403 Forbidden	The operation is not allowed given the current status of the resource. More information shall be provided in the "detail" attribute of the "ProblemDetails" structure.
	ProblemDetails	0..1	412 Precondition Failed	It is used when a condition has failed during conditional requests, e.g. when using ETags to avoid write conflicts. In the returned ProblemDetails structure, the "detail" attribute should convey more information about the error.

7.3.3.3 PATCH

Not supported.

7.3.3.4 POST

Not supported.

7.3.3.5 DELETE

Not supported.

Annex A (informative): Complementary material for API utilization

To complement the definitions for each method and resource defined in the interface clauses of the present document, ETSI MEC ISG is providing for the *UEidentity* API a supplementary description file compliant to the OpenAPI Specification [i.1].

In case of discrepancies between the supplementary description file and the related data structure definitions in the present document, the data structure definitions take precedence.

The supplementary description file, relating to the present document, is located at https://forge.etsi.org/rep/gitweb.cgi/MEC.GS_014.git.

History

Document history		
V1.1.1	February 2018	Publication