

<i>BLUETOOTH</i> ® DOC	Date / Year-Month-Day 2008-12-18	Approved	Revision V12r00	Document No HSP_SPEC
Prepared By Car WG	E-mail Address car-feedback@bluetooth.org			N.B.

HEADSET PROFILE

Abstract:

This profile defines the requirements for Bluetooth® devices necessary to support the Headset use case. The requirements are expressed in terms of end-user services, and by defining the features and procedures that are required for interoperability between Bluetooth devices in the Headset use case.

*Headset Profile (HSP)***Revision History**

Revision	Date	Comments
D12r00	15 August 2005	Review draft
D12r01	13 September 2005	Editorial updates to include 1.2 or Later updates
D12r02	30 November 2005	Editorial updates
D12r03	17 August 2007	Editorial updates to include core spec 2.1+EDR – also address HSP errata 350, 368, and 446 (new ID numbers)
D12r04	19 August 2007	Edits based on discussion during BARB call – removed PARK references
D12r05	30 August 2007	Edits based on BARB review feedback
D12r06	07 September 2007	More BARB review edits and correct version number
D12r07	06 November 2007	More edits from review
D12r08	12 November 2007	Add ESR 01 stuff
D12r09	30 November 2007	TB and LLO comments addressed
D12r10	3 December 2007	New dependency table provided by the SIG
D12r11	04 December 2007	Comments from TWG addressed Reviewed for open errata coverage – new ids 114, 140, 215, 221, 351. Errata 350, 368, and 446 were previously addressed Checked ESR 1 coverage.
D12r12	28 January 2008	BARB final voting draft
D12	18 December 2008	Prepare for publication.
V12	18 December 2008	Adopted by Bluetooth SIG Board of Directors

Contributors

Name	Company
Richard Shaw	3Com
Ken Morley	3Com
Erik Slotboom	Ericsson Mobile Communications AB
Olof Dellien	Ericsson Mobile Communications AB
Bailey Cross	Intel Corporation
Shridar Rajagopal	Intel Corporation
Brian Redding	Motorola
Alex Feinman	Motorola
Thomas Muller	Nokia Mobile Phones
Christian Zechlin	Nokia Mobile Phones
Martin Roter	Nokia Mobile Phones
Jun'ichi Yoshizawa	Toshiba
Terry Bourk	QUALCOMM
Kanji Kerai	Nokia Mobile Phones
Burch Seymour	Continental Automotive Systems
Len Ott	Socket Mobile

Headset Profile (HSP)

Disclaimer and Copyright Notice

The copyright in this specification is owned by the Promoter Members of *Bluetooth*® Special Interest Group (SIG), Inc. ("*Bluetooth* SIG"). Use of these specifications and any related intellectual property (collectively, the "Specification"), is governed by the Promoters Membership Agreement among the Promoter Members and *Bluetooth* SIG (the "Promoters Agreement"), certain membership agreements between *Bluetooth* SIG and its Adopter and Associate Members (the "Membership Agreements") and the *Bluetooth* Specification Early Adopters Agreements (1.2 Early Adopters Agreements) among Early Adopter members of the unincorporated *Bluetooth* SIG and the Promoter Members (the "Early Adopters Agreement"). Certain rights and obligations of the Promoter Members under the Early Adopters Agreements have been assigned to *Bluetooth* SIG by the Promoter Members.

Use of the Specification by anyone who is not a member of *Bluetooth* SIG or a party to an Early Adopters Agreement (each such person or party, a "Member"), is prohibited. The legal rights and obligations of each Member are governed by their applicable Membership Agreement, Early Adopters Agreement or Promoters Agreement. No license, express or implied, by estoppel or otherwise, to any intellectual property rights are granted herein.

Any use of the Specification not in compliance with the terms of the applicable Membership Agreement, Early Adopters Agreement or Promoters Agreement is prohibited and any such prohibited use may result in termination of the applicable Membership Agreement or Early Adopters Agreement and other liability permitted by the applicable agreement or by applicable law to *Bluetooth* SIG or any of its members for patent, copyright and/or trademark infringement.

THE SPECIFICATION IS PROVIDED "AS IS" WITH NO WARRANTIES WHATSOEVER, INCLUDING ANY WARRANTY OF MERCHANTABILITY, NONINFRINGEMENT, FITNESS FOR ANY PARTICULAR PURPOSE, SATISFACTORY QUALITY, OR REASONABLE SKILL OR CARE, OR ANY WARRANTY ARISING OUT OF ANY COURSE OF DEALING, USAGE, TRADE PRACTICE, PROPOSAL, SPECIFICATION OR SAMPLE.

Each Member hereby acknowledges that products equipped with the *Bluetooth* technology ("*Bluetooth* products") may be subject to various regulatory controls under the laws and regulations of various governments worldwide. Such laws and regulatory controls may govern, among other things, the combination, operation, use, implementation and distribution of *Bluetooth* products. Examples of such laws and regulatory controls include, but are not limited to, airline regulatory controls, telecommunications regulations, technology transfer controls and health and safety regulations. Each Member is solely responsible for the compliance by their *Bluetooth* Products with any such laws and regulations and for obtaining any and all required authorizations, permits, or licenses for their *Bluetooth* products related to such regulations within the applicable jurisdictions. Each Member acknowledges that nothing in the Specification provides any information or assistance in connection with securing such compliance, authorizations or licenses. **NOTHING IN THE SPECIFICATION CREATES ANY WARRANTIES, EITHER EXPRESS OR IMPLIED, REGARDING SUCH LAWS OR REGULATIONS.**

ALL LIABILITY, INCLUDING LIABILITY FOR INFRINGEMENT OF ANY INTELLECTUAL PROPERTY RIGHTS OR FOR NONCOMPLIANCE WITH LAWS, RELATING TO USE OF THE SPECIFICATION IS EXPRESSLY DISCLAIMED. BY USE OF THE SPECIFICATION, EACH MEMBER EXPRESSLY WAIVES ANY CLAIM AGAINST *BLUETOOTH* SIG AND ITS PROMOTER MEMBERS RELATED TO USE OF THE SPECIFICATION.

Bluetooth SIG reserve the right to adopt any changes or alterations to the Specification as it deems necessary or appropriate.

Copyright © 2001–2008. *Bluetooth*® SIG, Inc. All copyrights in the *Bluetooth* Specifications themselves are owned by Ericsson AB, Lenovo, Intel Corporation, Microsoft Corporation, Motorola, Inc., Nokia Corporation and Toshiba Corporation. *Other third-party brands and names are the property of their respective owners.

Contents

1	Introduction	5
1.1	Scope.....	5
1.2	Profile Dependencies	5
1.3	Symbols and Conventions.....	5
1.3.1	Requirement Status Symbols	5
1.4	Signaling Diagram Conventions	5
2	Profile Overview	7
2.1	Profile stack	7
2.2	Configuration and roles	7
2.3	User requirements and Scenarios.....	8
2.4	Profile Fundamentals.....	9
2.5	Conformance	9
3	Application Layer	10
4	Headset Control Interoperability Requirements	11
4.1	Introduction	11
4.2	Audio Gateway Initiated ACL Connection Establishment	11
4.2.1	Using In-Band Ringing	11
4.2.2	Using the RING message	12
4.3	Headset Initiated ACL Connection Establishment.....	13
4.4	Headset Control Following Connection Establishment	14
4.5	Audio Connection Release	14
4.6	Audio Connection Transfer	15
4.6.1	Audio Connection Transfer from AG to HS.....	16
4.6.2	Audio Connection Transfer from HS to AG.....	16
4.7	Remote Audio Volume Control	16
4.8	AT Commands and Result Codes	18
4.8.1	General	18
4.8.2	AT Capabilities Re-used from V.250.....	19
4.8.3	Bluetooth-defined AT capabilities	19
4.9	Lower Layer Handling.....	19
4.9.1	Connection Handling.....	20
4.9.1.1	Connection establishment	20
4.9.1.2	Connection release.....	20
4.9.1.3	Sniff mode	20
5	Serial Port Profile	21
5.1	RFCOMM Interoperability Requirements	21
5.2	L2CAP Interoperability Requirements	21
5.3	SDP Interoperability Requirements	21
5.4	Link Manager (LM) Interoperability Requirements	22
5.5	Link Control (LC) Interoperability Requirements	22
5.5.1	Class of Device	22
6	Generic Access Profile	24
6.1	Modes	24
6.2	Security Aspects.....	24
6.3	Idle Mode Procedures	24
7	References.....	25
8	List of Figures	26
9	List of Tables	27

1 Introduction

1.1 Scope

This Headset profile defines the protocols and procedures that shall be used by devices requiring a full-duplex audio connection combined with minimal device control commands. The most common examples of such devices are headsets, personal computers, PDAs, and cellular phones, though most cellular phones will prefer to use a more advanced profile such as Hands-Free Profile.

The headset can be wirelessly connected for the purposes of acting as the device's audio input and output mechanism, providing full duplex audio. The headset increases the user's mobility while maintaining call privacy.

1.2 Profile Dependencies

The Headset profile is dependent upon both the Serial Port Profile and the Generic access profile – details are provided in [Serial Port Profile](#) and [Generic Access Profile](#).

1.3 Symbols and Conventions

1.3.1 Requirement Status Symbols

In this document, the following symbols are used:

- 'M' for mandatory to support
- 'O' for optional to support
- 'X' for excluded (used for capabilities that may be supported by the unit but shall never be used in this use case)
- 'C' for conditional to support
- 'N/A' for not applicable (in the given context it is impossible to use this capability)

Some excluded capabilities are capabilities that, according to the relevant Bluetooth specification, are mandatory. These are features that may degrade operation of devices in this use case. Therefore, these features shall never be activated while a unit is operating as a unit within this use case.

1.4 Signaling Diagram Conventions

The following arrows are used in diagrams describing procedures:

Headset Profile (HSP)

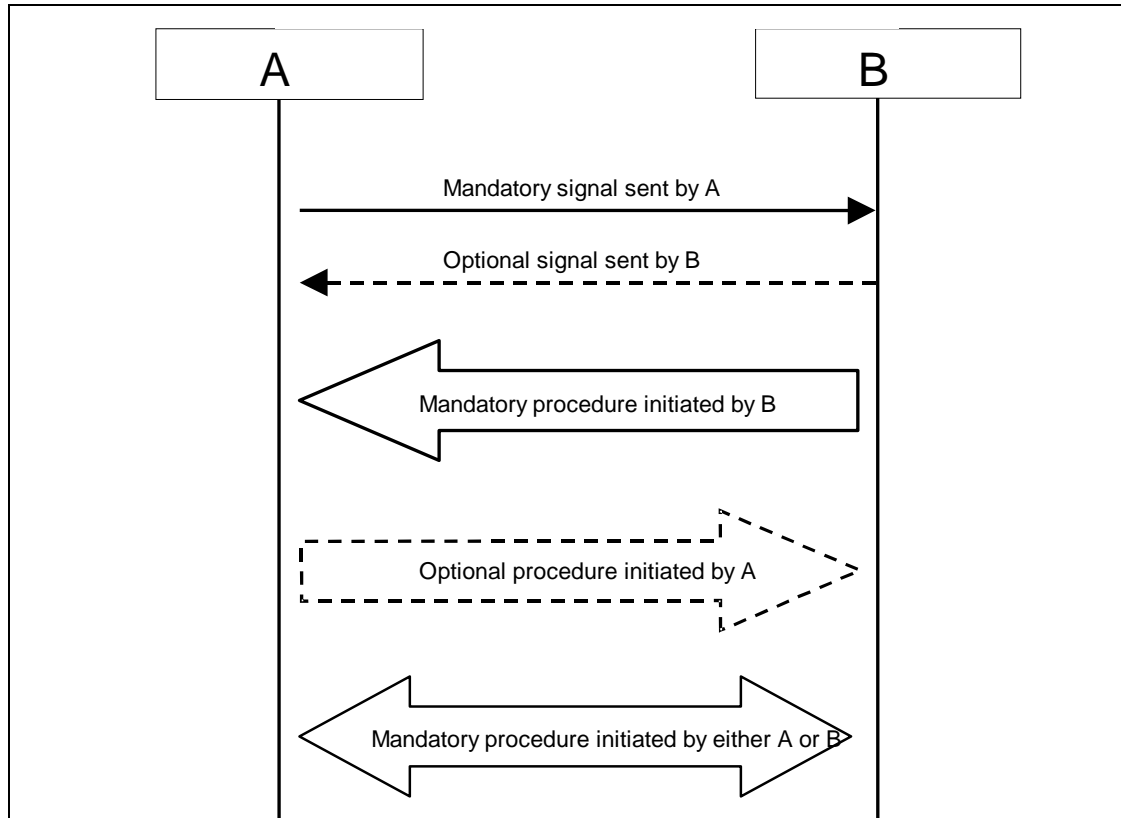


Figure 1.1: Arrows used in signaling diagrams

2 Profile Overview

2.1 Profile stack

Figure 2.1 shows the protocols and entities used in this profile.

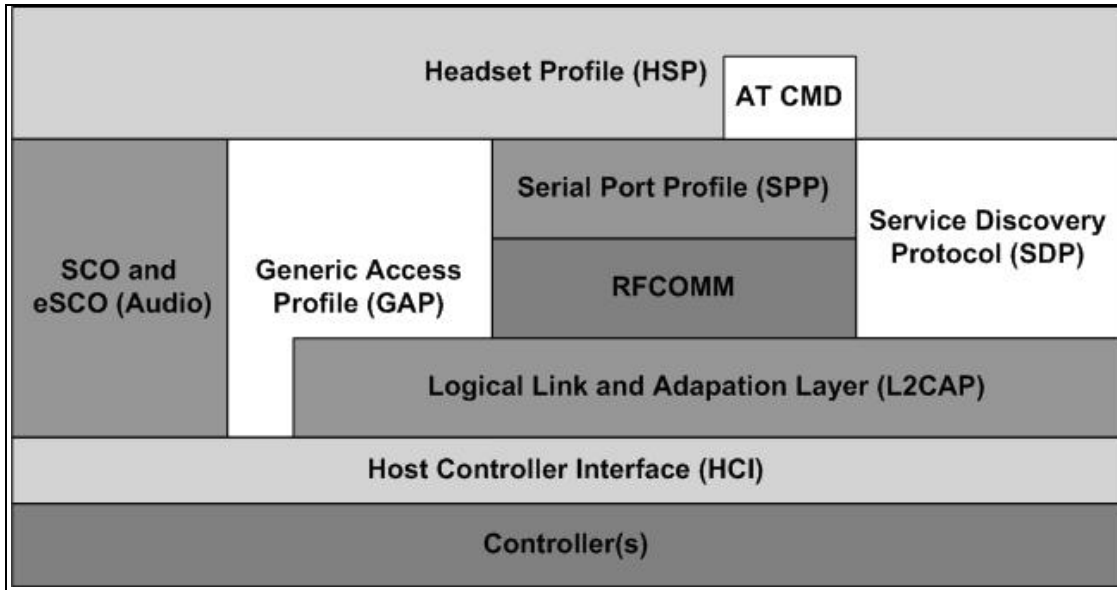


Figure 2.1: Protocol model

The Controller, HCI, and L2CAP are the OSI layer 1 and 2 Bluetooth protocols. RFCOMM is the Bluetooth adaptation of GSM TS 07.10 [5]. SDP is the Bluetooth Service Discovery Protocol. Headset Profile and AT CMD are the entities responsible for headset specific control signaling, which is AT command based.

.For the HSP layer in Figure 2.2 the Serial Port Profile is used as a base standard. For this protocol, all requirements stated in the Serial Port Profile apply except in those cases where this profile explicitly states deviations.

2.2 Configuration and roles

The figures below show two typical configurations of devices for which the Headset profile is applicable:

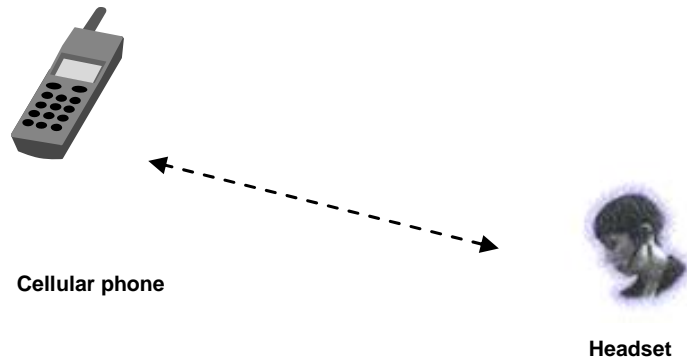
Headset Profile (HSP)

Figure 2.2: Headset profile, example with cellular phone

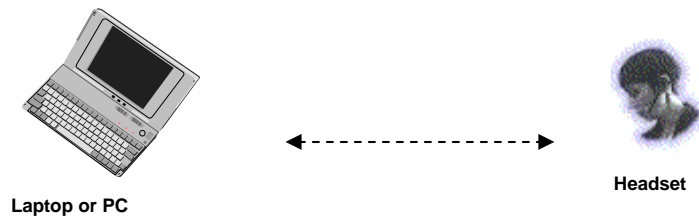


Figure 2.3: Headset profile, example with personal computer

The following roles are defined for this profile:

Audio Gateway (AG) – This device acts as either the end point, or a relay, for telephony quality audio, which is typically two-way. Exemplary devices acting as Audio Gateways are cellular phones and personal computers.

Headset (HS) – This device provides the Audio Gateway's remote audio input and output mechanism.

The abbreviations AG and HS are used in the rest of this document to designate these roles.

2.3 User requirements and Scenarios

The Headset profile defines the protocols and procedures that shall be used by devices implementing this use case.

The following restrictions apply to this profile:

- The profile mandates CVSD encoding for audio transmitted over the Bluetooth SCO link. The resulting audio is monophonic, with a quality that – under normal circumstances – will be comparable to standard cellular phone audio quality.
- Only one audio connection at a time is supported by a single instance of this profile.

Headset Profile (HSP)

- The AG controls the SCO link establishment and release. The headset directly connects (disconnects) the internal audio streams upon SCO link establishment (release). All SCO links are, by definition, full duplex.
- The use of eSCO [3] by co-operating devices is not prohibited, but will not be further specified in this profile.¹
- The profile offers only basic interoperability – multi-party call handling at the AG, for example, is not specified.
- The only required HS user interface is a button-press event. The HS can signal the AG that the button has been pressed, but the ability to send button-press and button-release as two distinct signals is not defined.

2.4 Profile Fundamentals

Depending on the underlying core specification version², an HS may be able to use the services of the AG without the creation of a secure connection. It is the implementer's responsibility to enforce security on devices that support authentication and/or encryption in the execution of this profile. If baseband authentication and/or encryption is desired, the two devices shall create a secure connection, using the authentication procedure as described in the Generic Access profile.

A link must be established before establishing an audio connection. Normally, this requires paging of the other device.

There are no fixed master/slave roles.

The AG and HS provide serial port emulation by using the serial port profile, which in turn uses the RFCOMM protocol. The serial port emulation is used to exchange the user data including modem control signals and AT commands and responses. AT commands are parsed by the AG and responses are sent to the HS.

2.5 Conformance

If conformance to this profile is claimed, all capabilities indicated as mandatory for this profile shall be supported in the specified manner (process-mandatory). This also applies for all optional and conditional capabilities for which support is indicated. All mandatory capabilities, and optional and conditional capabilities for which support is indicated, are subject to verification as part of the Bluetooth qualification program.

¹ Interested parties should refer to the Hands-Free Profile, version 1.5 for a relevant discussion of eSCO.

² Core specifications 2.1 and later require secure connections.

Headset Profile (HSP)

3 Application Layer

This section describes the feature requirements for units complying with the Headset Profile.

Table 3.1 shows the feature requirements made by this profile.

	Feature	Support in HS	Support in AG
1.	Incoming audio connection	M	M
2.	Outgoing audio connection	M	O
3.	Audio connection transfer	M	M
4.	Remote audio volume control	O	O

Table 3.1: Application layer procedures

In the table above, incoming and outgoing shall be interpreted from the headset (HS) point of view.

Table 3.2 maps each feature to the procedures used for that feature. All procedures are mandatory if the feature is supported.

	Feature	Procedure	Ref.
1.	Incoming audio connection	Incoming audio connection establishment	4.2
		Audio connection release	4.4
2.	Outgoing audio connection	Outgoing audio connection establishment	4.3
		Audio connection release	4.4
3.	Audio connection transfer	Audio connection transfer	4.6
4.	Remote audio volume control	Remote audio volume control	4.7

Table 3.2: Application layer feature to procedure mapping

4 Headset Control Interoperability Requirements

4.1 Introduction

The interoperability requirements for the Headset Control entity are completely contained in this chapter. Sections 4.2 through Section 4.7 specify the requirements for the procedures directly relating to the application layer features.

Section 4.8 specifies the AT commands and results codes used for signaling purposes.

Section 4.9 specifies how the layers beneath the Headset Control entity are used to establish and release a connection.

4.2 Audio Gateway Initiated ACL Connection Establishment

Upon an internal or user generated event, the AG will initiate connection establishment (see Section 4.8.1), once the connection is established, there are then two options as described in the Sections 4.2.1 and Sections 4.2.2. The SCO link establishment can take place anytime after the ACL connection establishment.

4.2.1 Using In-Band Ringing

An in-band ring tone is an audible alert, such as a tone, melody, short music clip, that is transmitted by the AG, to the HS, to alert the user of an event; typically an incoming call. As shown in Figure 4.1, the AG may generate an in-band ring tone using the SCO connection to the HS. The AG decides how to use this SCO connection. When using an in-band ring tone, the AG shall **not** send the RING unsolicited result code to the HS³.

³ Please note this behavior differs from the Hands-Free Profile versions 1.0 and 1.5, which do send RING when using in-band ring tone notification.

Headset Profile (HSP)

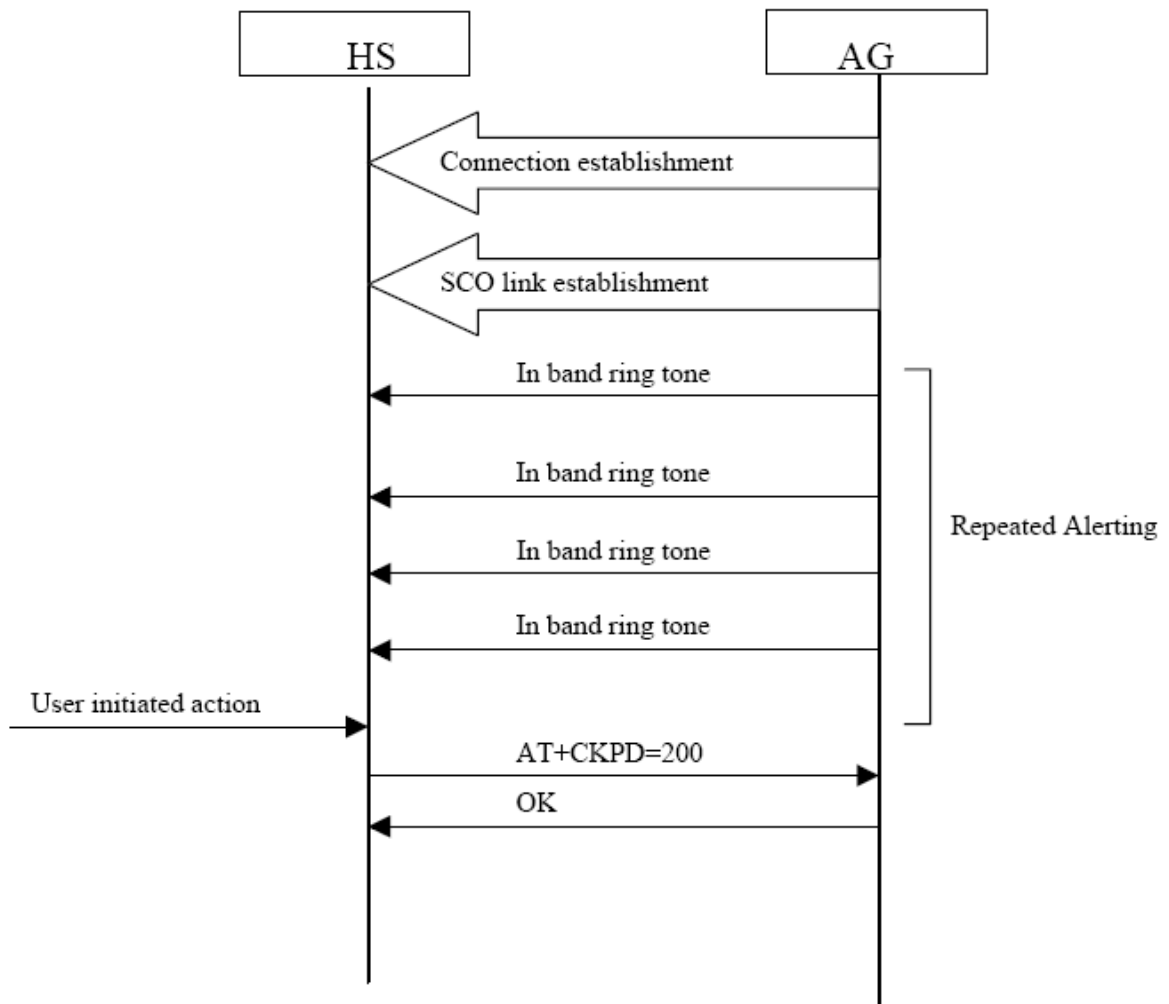


Figure 4.1: Incoming audio connection establishment using in-band ring tone

4.2.2 Using the RING message

As shown in Figure 4.2, the AG will repeatedly send the RING unsolicited result code to the HS for a time period decided by the AG. The RING may be repeated for as long as the connection establishment is pending.

Headset Profile (HSP)

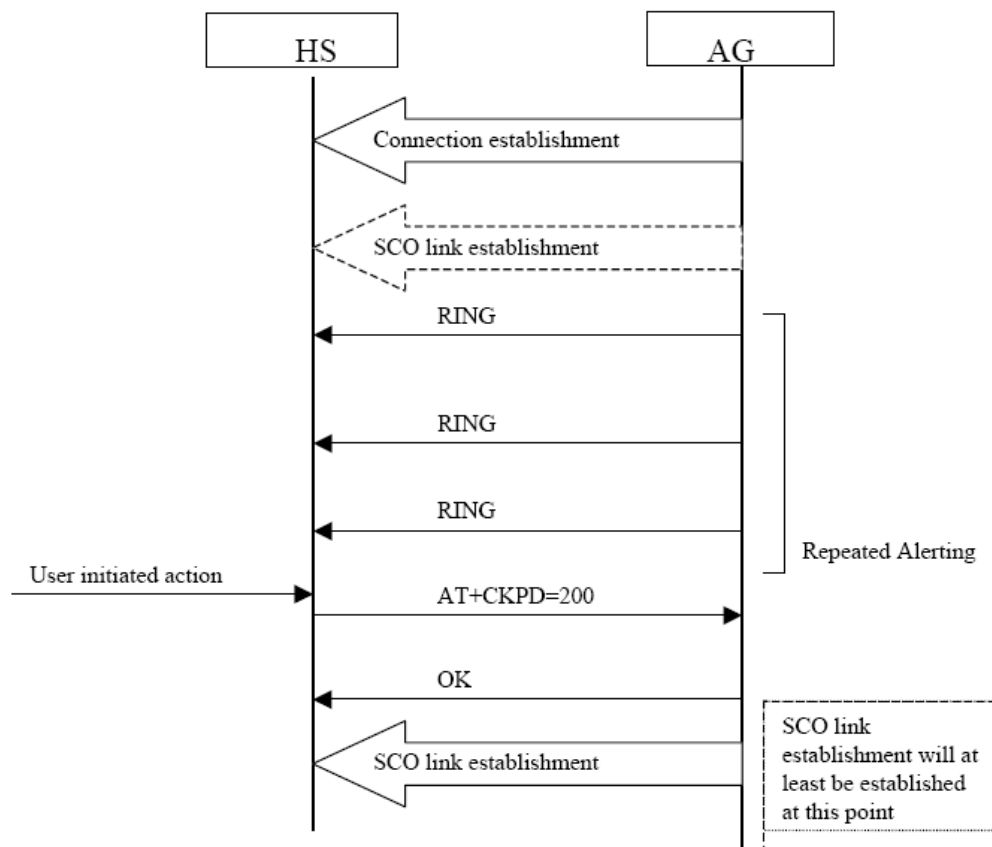


Figure 4.2 Incoming connection establishment (using RING message)

4.3 Headset Initiated ACL Connection Establishment

A headset (HS) originated ACL connection is initiated (see Section 4.9) by a user action (e.g. pressing a button on the headset). Upon completion of a connection establishment that was initiated by pressing the “headset button”, the HS shall send the AT+CKPD=200 command to the AG. If the HS connection is initiated by an event other than a headset button press, the HS shall not send AT+CKPD=200.

The AG may initiate a SCO connection after the completion of the ACL connection establishment, but before receiving the AT+CKPD=200 command from the HS. This may be desirable when the AG is a mobile phone. In all cases, the AG is responsible for establishing the SCO link if needed. Further internal actions may be needed on the AG to internally establish and/or route the audio stream to the HS⁴.

As shown in Figure 4.3, the SCO link connection may be set up prior to receiving the AT+CKPD=200 command. If this is not the case, then the SCO link connection shall be set up after receiving the AT+CKPD=200 command.

4 For a cellular phone a cellular call may need to be established, e.g. using last dialled number or a pre-programmed number. For a personal computer this may relate to VoIP calls or voice command/prompt interaction with the computer.

Headset Profile (HSP)

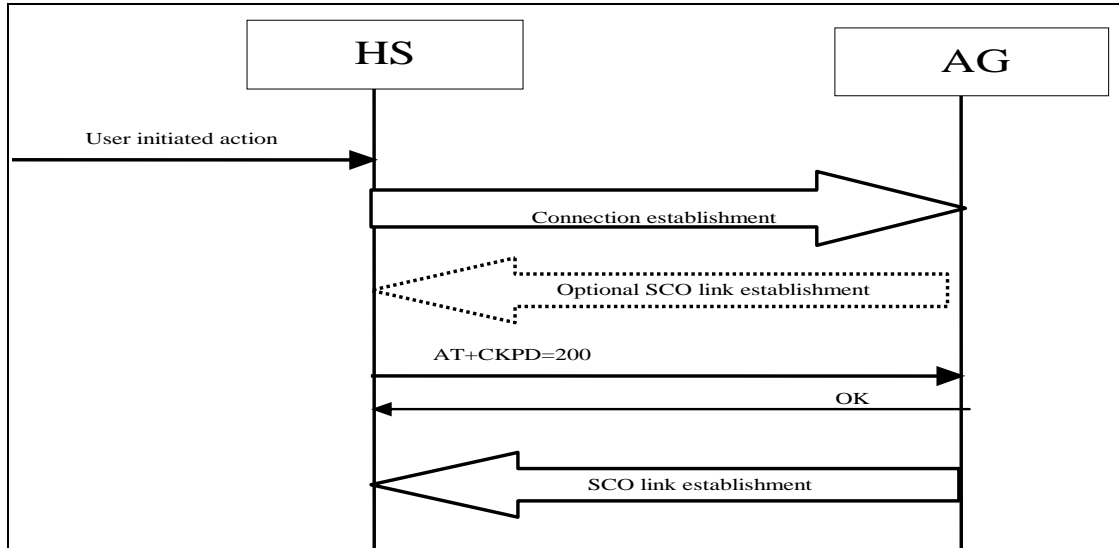


Figure 4.3: Audio connection establishment

4.4 Headset Control Following Connection Establishment

While a headset profile connection exists between AG and HS, and upon the receipt of a user initiated action (for example, button press) on the HS, the HS shall send the AT+CKPD=200 command to the AG. The action performed by the AG on receipt of the AT+CKPD=200 command is implementation dependent. The actions performed by the AG may be dictated by the state the AG is in at the time it received the command.

4.5 Audio Connection Release

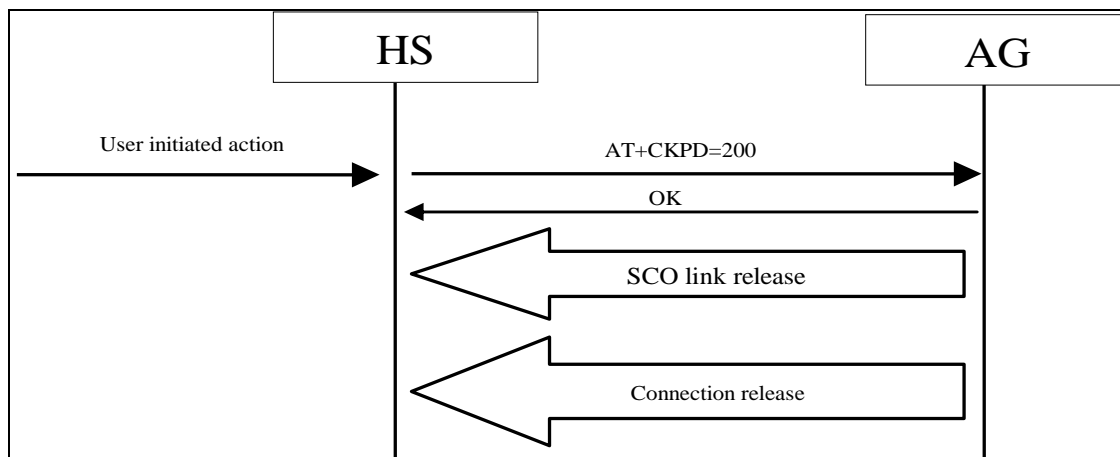


Figure 4.4: Audio connection release – HS initiated

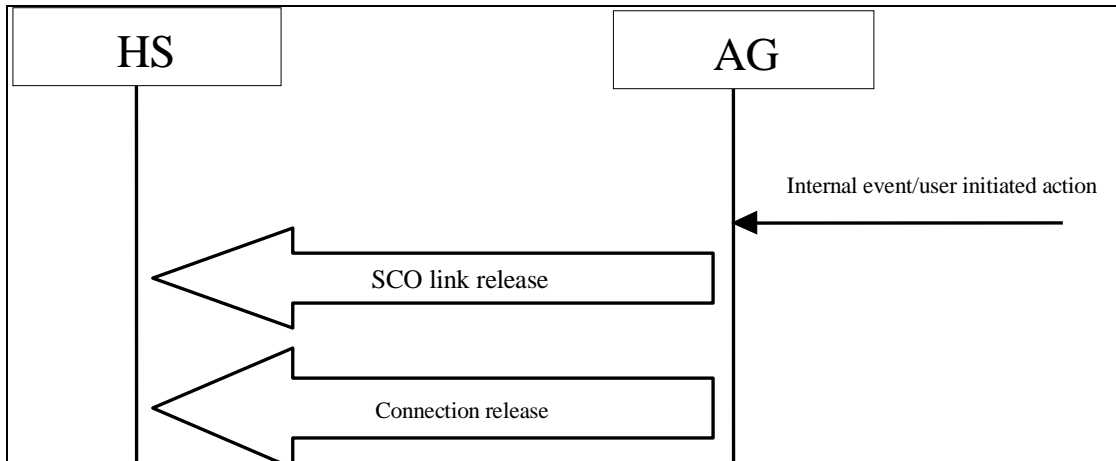
Headset Profile (HSP)

Figure 4.5: Audio connection release – AG initiated

The AG may release the Audio connection (SCO) upon an internal event in the AG or after the AG receives an indication of a user initiated action (e.g. button press) from the AG or HS.

The HS may initiate an Audio connection (SCO) release in circumstances such as power-down event while an Audio connection (SCO) is established.

Irrespective of the initiating side, the AG is responsible for releasing the profile's serial port (RFCOMM) connection (see Section [4.9.1.2](#)).

4.6 Audio Connection Transfer

An audio connection can be transferred from AG to HS or from HS to AG. The connection is transferred to the device initiating the transfer.

Headset Profile (HSP)

4.6.1 Audio Connection Transfer from AG to HS

The audio connection transfer from AG to HS is initiated by a user action on the HS side. To effect this transfer, the HS shall send the AT+CKPD=200 command to the AG.

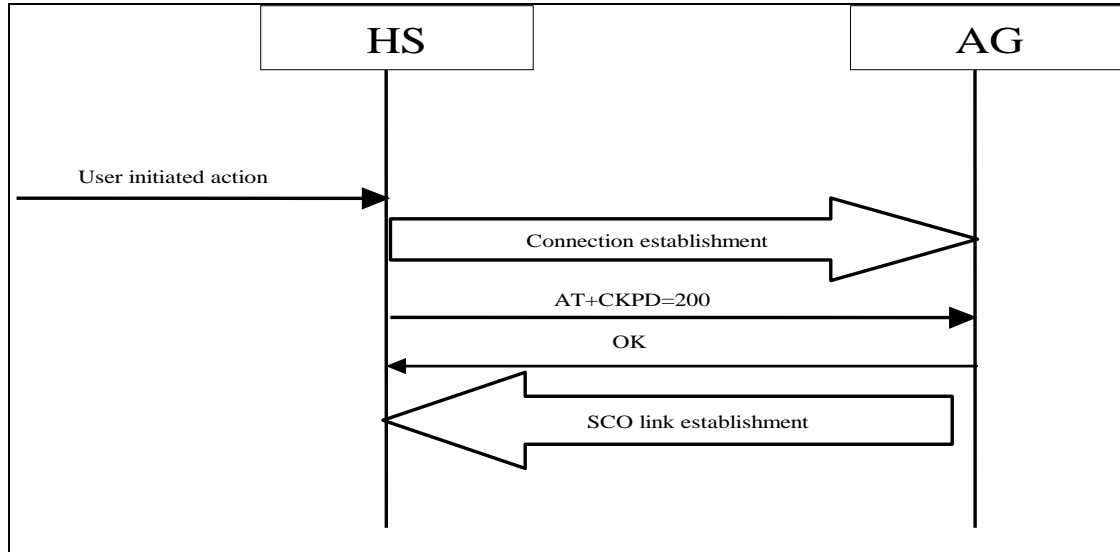


Figure 4.2: Audio connection transfer from AG to HS

4.6.2 Audio Connection Transfer from HS to AG

The audio connection transfer from HS to AG is initiated by a user action on the AG. This user action shall result in the AG releasing the SCO connection.

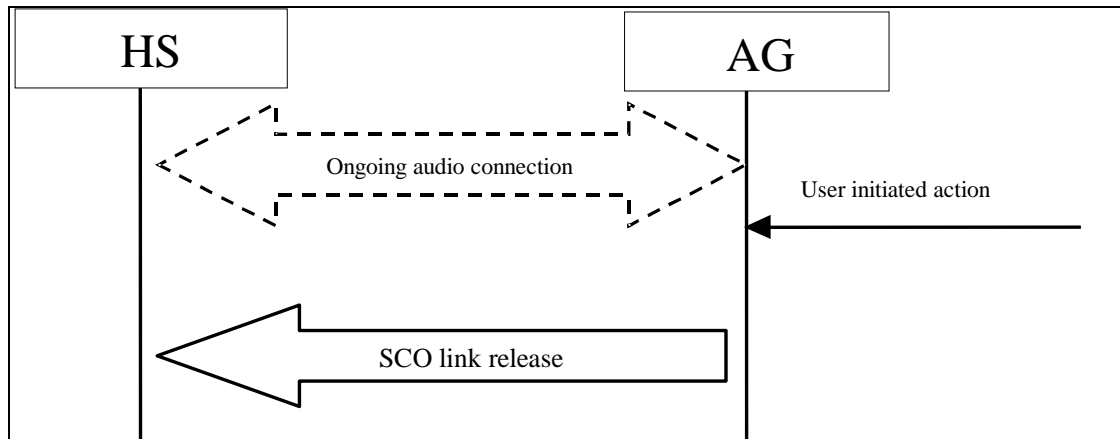


Figure 4.3: Audio connection transfer from HS to AG

4.7 Remote Audio Volume Control

The AG can control the gain of the microphone or speaker of the HS by sending unsolicited result codes +VGM or +VGS respectively. There is no restriction on the number or order of these result codes. Support for remote audio volume control is

Headset Profile (HSP)

optional, so an implementation may support none, either, or both of the controls for microphone volume and speaker volume.

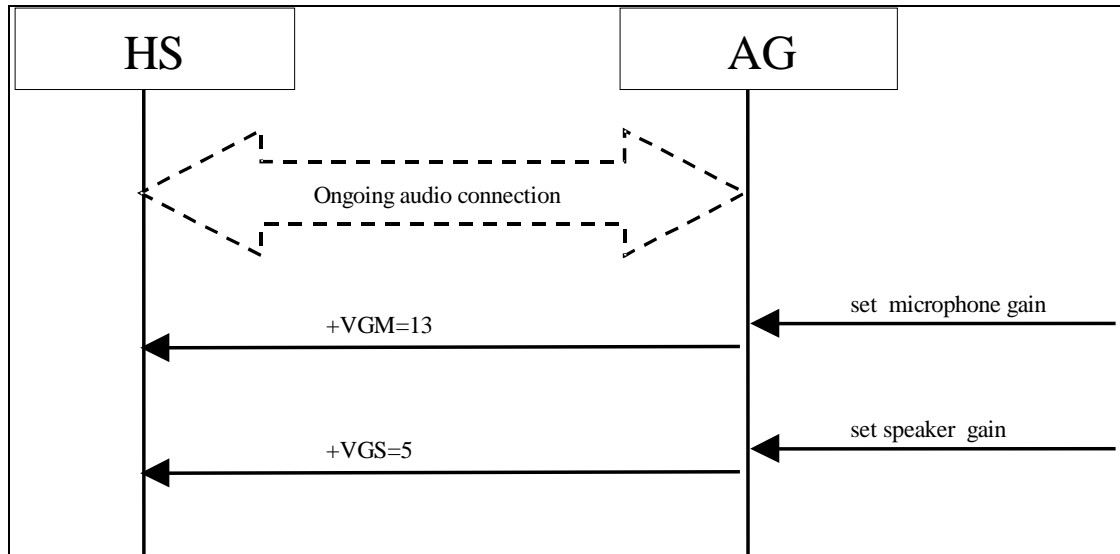


Figure 4.4: Audio volume control – example flow

Both the speaker and microphone gain are represented as parameter to the +VGS and +VGM, on a scale from 0 to 15. The values are absolute values, relating to a particular (implementation-dependent) volume level controlled by the HS.

The HS may store the VGS and VGM settings at connection release. At connection establishment, the HS may restore the previous settings using the AT commands AT+VGS and AT+VGM. In case physical mechanisms (buttons, dials etc.) means are implemented on the HS to control the volume levels, the HS shall also use the AT commands AT+VGS and AT+VGM to inform the AG of any changes in the volume levels.

Headset Profile (HSP)

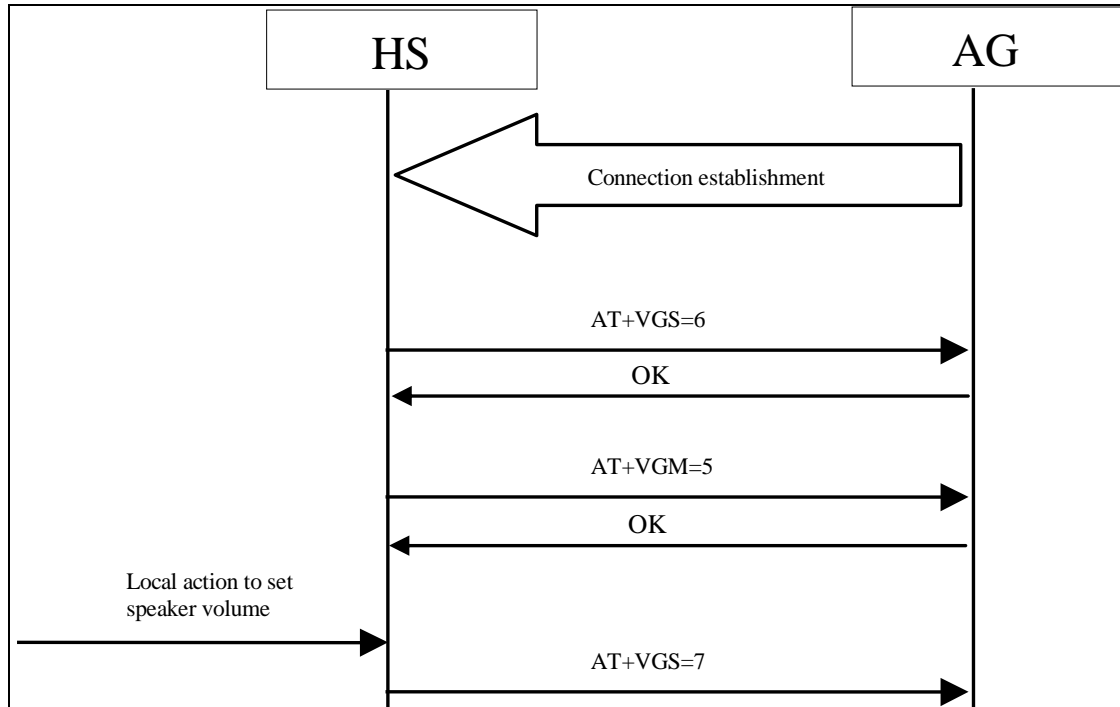


Figure 4.5: Volume level synchronization – example flow

4.8 AT Commands and Result Codes

4.8.1 General

The command line termination character shall be carriage return (IA5 0/13). The response formatting character shall be line feed (IA5 0/10). The AG shall not echo command characters⁵. The AG shall transmit result codes, using the verbose (rather than numeric) format.

The format for a command from the HS to the AG is thus:

AT<cmd>=<value><cr>

If the command is processed successfully, the resulting response from the AG to the HS is:

<cr><lf>OK<cr><lf>

If the command is not processed successfully, or is not recognized, the resulting response from the AG to the HS is:

<cr><lf>ERROR<cr><lf>

The format for an unsolicited result code (such as RING) from the AG to the HS is:

<cr><lf><result code><cr><lf>

⁵ 1This is the opposite of the default recommended by V.250

Headset Profile (HSP)

4.8.2 AT Capabilities Re-used from V.250

The mandatory set of AT commands and unsolicited result codes are indicated in [Table 4.1](#).

AT capability	Syntax	Description
RING – See note 1	RING	The Incoming call indication of V.250 [1], Section 6.3.4.
Headset button press	+CKPD=200	Command issued by HS to indicate that the button has been pressed

Table 4.1: Mandatory AT capabilities

Note 1: Mandatory for HS to support RING, optional for AG

4.8.3 Bluetooth-defined AT capabilities

Optionally, the AT capabilities as indicated in [Table 4.2](#) may be supported.

AT capability	Syntax	Description	Values
Microphone gain	+VGM=<gain >	Unsolicited result code issued by the AG to set the microphone gain of the HS. <gain> is a decimal numeric constant, relating to a particular (implementation- dependent) volume level controlled by the HS.	<gain>: 0-15
Speaker gain	+VGS=<gain>	Unsolicited result code issued by the AG to set the speaker gain of the HS. <gain> is a decimal numeric constant, relating to a particular (implementation-dependent) volume level controlled by the HS.	<gain>: 0-15
Microphone gain level report	+VGM=<gain >	Command issued by the HS to report the current microphone gain level setting to the AG. <gain> is a decimal numeric constant, relating to a particular (implementation-dependent) volume level controlled by the HS.	<gain>: 0-15
Speaker gain level indication report	+VGS=<gain>	Command issued by the HS to report the current speaker gain level setting to the AG. <gain> is a decimal numeric constant, relating to a particular (implementation-dependent) volume level controlled by the HS.	<gain>: 0-15

Table 4.2: Optional AT capabilities

4.9 Lower Layer Handling

This section describes how the layers below the Headset Control entity are used to establish and release a connection.

*Headset Profile (HSP)***4.9.1 Connection Handling****4.9.1.1 Connection establishment**

Either the HS or the AG may initiate connection establishment. If there is no RFCOMM session between the AG and the HS, the initiating device shall first initialize RFCOMM. Connection establishment shall be performed as described in Section 7.3 of GAP and Section 3 of SPP.

4.9.1.2 Connection release

When the audio connection is released, the profile's serial port (RFCOMM) connection may be released as well.

Since it is possible that multiple profiles are active between the two devices, the Headset Profile should not initiate an ACL level disconnection, that action should be left to a lower layer that can determine when it is appropriate to disconnect the physical link.

4.9.1.3 Sniff mode

The use of sniff mode is recommended⁶ for devices that need to reduce power consumption while maintaining an active connection. This can be used for ACL connection when a call is in progress or when a call is not in progress. Note; it is not necessary to exit sniff mode when exchanging AT commands and responses.

⁶ Support for sniff mode may be mandatory depending on the underlying core stack version.

5 Serial Port Profile

This profile requires compliance with the Serial Port Profile. The following text together with the associated sub-clauses defines the requirements with regard to this profile, in addition to the requirements as defined in the Serial Port Profile.

As with the Headset Profile, both the AG and the HS can initiate connection establishment. For the purposes of reading the Serial Port Profile, both the AG and the HS can assume the role of Device A and B.

5.1 RFCOMM Interoperability Requirements

For the RFCOMM layer, no additions to the requirements as stated in the Serial Port Profile Section 4 shall apply.

5.2 L2CAP Interoperability Requirements

For the L2CAP layer, no additions to the requirements as stated in the Serial Port Profile Section 5 shall apply [3].

5.3 SDP Interoperability Requirements

This profile [3] defines following service records for the headset and the audio gateway respectively.

The codes assigned to the mnemonics used in the Value column as well as the codes assigned to the attribute identifiers (if not specifically mentioned in the AttrID column) can be found on the Bluetooth Assigned Numbers web page.

Item	Definition	Type	Value	AttrID	Status	Default
ServiceClassIDList					M	
ServiceClass0		UUID	Headset		M	
ServiceClass1		UUID	Generic Audio		M	
ProtocolDescriptorList					M	
Protocol0		UUID	L2CAP		M	
Protocol1		UUID	RFCOMM		M	
Protocol Specific Parameter0	Server Channel	UInt8	N=server channel #		M	
BluetoothProfile DescriptorList					M	
Profile0	Supported Profiles	UUID	Headset Profile		M	Headset
Param0	Profile Version	UInt16	0x0102 ⁷		M	0x0102
ServiceName	Display able Text name	String	Service- provider defined		O	'Headset'

Headset Profile (HSP)

Item	Definition	Type	Value	AttrID	Status	Default
Remote audio volume control		Boolean	True/False		O	False

Table 5.1: Service Record for Headset

Item	Definition	Type	Value	AttrID	Status	Default
ServiceClassIDList					M	
ServiceClass0		UUID	Headset Audio Gateway		M	
ServiceClass1		UUID	Generic Audio		M	
ProtocolDescriptorList					M	
Protocol0		UUID	L2CAP		M	
Protocol1		UUID	RFCOMM		M	
Protocol Specific Parameter0	Server Channel	Uint8	N=server channel #		M	
BluetoothProfile DescriptorList						
Profile0	Supported Profile	UUID	Headset Profile		M	Headset
Param0	Profile Version	Uint16	0x0102 ⁷		M	0x0102
ServiceName	Display able Text name	String	Service-provider defined		O	'Voice gateway'

Table 5.2: Service Record for the Audio Gateway

5.4 Link Manager (LM) Interoperability Requirements

In addition to the requirements for the Link Manager as stated in the Serial Port Profile, this profile mandates support for SCO links, in both the HS and AG.

5.5 Link Control (LC) Interoperability Requirements

CVSD audio shall be supported in both the AG and HS.

5.5.1 Class of Device

A device that is active in the HS role shall, in the Class of Device field:

7 Indicating version 1.2

Headset Profile (HSP)

1. Set the bit 'Audio' in the Service Class field

Further, a device may optionally:

1. Indicate 'Audio' as Major Device class
2. Indicate "Headset" as the Minor Device class

An inquiring AG may use the Service Class field to filter the inquiry responses. The Device Class fields should not be used as filters since many devices support multiple profiles.

Headset Profile (HSP)

6 Generic Access Profile

This section defines the support requirements for the capabilities as defined in Generic Access Profile [3].

6.1 Modes

The table shows the support status for Modes within this profile.

	Procedure	Support in HS	Support in AG
1	Discoverability modes		
	Non-discoverable mode	M	O
	Limited discoverable mode	O	O
	General discoverable mode	M	O
2	Connectability modes		
	Non-connectable mode	O	O
	Connectable mode	M	M
3	Pairing modes		
	Non-pairable mode	O	O
	Pairable mode	O	O

Table 6.1: Modes

6.2 Security Aspects

No changes to the requirements as stated in the Generic Access Profile [3].

6.3 Idle Mode Procedures

Support for general inquiry mode is mandatory in the AG.

7 References

- [1] International Telecommunication Union, "ITU-T Recommendation V.250"
- [2] ETS 300 916 (GSM 07.07) version 5.6.0
- [3] Specification of the Bluetooth System; Core, v1.2 or later

8 List of Figures

Figure 1.1: Arrows used in signaling diagrams	6
Figure 2.1: Protocol model	7
Figure 2.2: Headset profile, example with cellular phone	8
Figure 2.3: Headset profile, example with personal computer	8
Figure 4.1: Incoming audio connection establishment using in-band ring tone	12
Figure 4.2: Audio connection transfer from AG to HS	16
Figure 4.3: Audio connection transfer from HS to AG	16
Figure 4.4: Audio volume control – example flow	17
Figure 4.5: Volume level synchronization – example flow	18

9 List of Tables

Table 3.1: Application layer procedures.....	10
Table 3.2: Application layer feature to procedure mapping	10
Table 4.1: Mandatory AT capabilities.....	19
Table 4.2: Optional AT capabilities	19
Table 5.1: Service Record for Headset.....	22
Table 5.2: Service Record for the Audio Gateway.....	22
Table 6.1: Modes	24